



Visit www.clevelandrange.com to locate a service or sales representative in your area.



Water Meter

Installation, Operation, Maintenance, Parts & Service

This manual is updated as new information and models are released. Visit our website for the latest manual.

MODELS:

WM



Read the manual thoroughly.
Improper installation, operation or maintenance can cause property damage, injury or death.

TABLE OF CONTENTS

Statement of Responsibilities	1
For your safety	2
Installation	4
Operating Instructions	5
Maintenance	6
Service Parts	8



STATEMENT OF RESPONSIBILITIES / DÉCLARATION DES RESPONSABILITÉS / DECLARACIÓN DE RESPONSABILIDADES

This document is for use by experienced and trained Qualified Cleveland Range, LLC Authorized Service Representatives who are familiar with both the safety procedures, and equipment they service. Cleveland Range, LLC assumes no liability for any death, injury, equipment damage, or property damage resulting from use of, improper use of, or failure to use the information contained in this document. Cleveland Range, LLC has made every effort to provide accurate information in this document, but cannot guarantee that this document does not contain unintentional errors and omissions.

The information in this document may be subject to technical and technological changes, revisions, or updates. Cleveland Range, LLC assumes no liability or responsibility regarding errata, changes, revisions, or updates.

Qualified Cleveland Range, LLC Authorized Service Representatives are obligated to follow industry standard safety procedures, including, but not limited to, OSHA regulations, and disconnect / lock out / tag out procedures for all utilities including steam, and disconnect / lock out / tag out procedures for gas, electric, and steam powered equipment and / or appliances.

All utilities (gas, electric, water and steam) should be turned OFF to the equipment and locked out of operation according to OSHA approved practices during any servicing of Cleveland Range equipment

Qualified Cleveland Range, LLC Authorized Service Representatives are obligated to maintain up-to-date knowledge, skills, materials and equipment.

Ce document est destiné à l'usage des Représentants de Service qualifiés et autorisés de Cleveland Range, LLC qui possèdent l'expérience et la formation ainsi que la bonne connaissance des mesures de sécurité et du matériel qu'ils entretiennent.

Cleveland Range, LLC décline toute responsabilité pour tout cas de décès, blessure, dommage matériel ou dommage aux biens résultant de l'utilisation, de la mauvaise utilisation ou du manquement d'utilisation des renseignements contenus dans ce document.

Cleveland Range, LLC s'est efforcé à fournir des renseignements précis dans ce document mais ne peut garantir que ce document soit exempt d'erreurs et d'omissions non intentionnelles.

Les renseignements contenus dans ce document peuvent être assujettis à des changements techniques et technologiques, des révisions ou des mises à jour.

Cleveland Range, LLC décline toute obligation ou responsabilité concernant les errata, modifications, révisions ou mises à jour.

Les Représentants de Service qualifiés et autorisés de Cleveland Range, LLC sont tenus de se conformer aux mesures de sécurité normalisées de l'industrie, y compris, mais sans s'y limiter, les réglementations de l'OSHA, les procédures de débranchement / verrouillage / étiquetage relatives à tous les services publics, dont l'approvisionnement en vapeur, et les procédures de débranchement / verrouillage / étiquetage relatives aux équipements et/ou appareils fonctionnant au gaz, à l'électricité et à la vapeur.

Au cours de tout entretien d'un appareil Cleveland Range, tous les services publics (gaz, électricité, eau et vapeur) doivent être FERMÉS au niveau de l'appareil et le dispositif de fonctionnement doit être verrouillé suivant les pratiques approuvées de l'OSHA.

Les Représentants de Service qualifiés et autorisés de Cleveland Range, LLC sont tenus d'actualiser en permanence leurs connaissances, compétences, matériel et équipement.

Este documento está destinado para el uso de los Representantes de Servicio calificados y autorizados de Cleveland Range, LLC quienes cuentan con la experiencia y la capacitación así como el buen conocimiento de las medidas de seguridad y de los equipos que mantienen.

Cleveland Range, LLC, declina toda responsabilidad en caso de cualquier fallecimiento, lesiones, daños al equipo o daños a la propiedad resultantes de la utilización, del uso indebido o de la falta de utilización de la información provista en este documento.

Cleveland Range, LLC se ha esforzado en suministrar información precisa en este documento, pero no puede garantizar que este documento esté exento de errores y de omisiones no intencionales.

La información contenida en este documento podría estar sujeta a cambios técnicos o tecnológicos, revisiones o actualizaciones. Cleveland Range, LLC declina toda obligación o responsabilidad con respecto a erratas, modificaciones, revisiones o actualizaciones.

Los Representantes de Servicio calificados y autorizados de Cleveland Range, LLC tienen la obligación de seguir los procedimientos estándar de seguridad de la industria; los cuales incluyen pero no se limitan a los reglamentos de la OSHA (La Administración de la Seguridad y Salud Ocupacionales), los procedimientos de desconexión, cierre y etiquetado relativos a todos los servicios públicos incluyendo el suministro de vapor y los procedimientos de desconexión, cierre y etiquetado para los equipos y/o aparatos que funcionan a base de gas, electricidad o vapor.

Cuando se esté dando servicio o mantenimiento a un aparato de Cleveland Range, todos los servicios públicos (gas, electricidad, agua y vapor) deben estar APAGADOS para el equipo en cuestión y se debe seguir el procedimiento de cierre de operaciones de acuerdo con las prácticas aprobadas por la OSHA.

Los Representantes de Servicio calificados y autorizados de Cleveland Range, LLC tienen la obligación de actualizar constantemente sus conocimientos, destrezas, materiales y equipamiento.

FOR YOUR SAFETY / POUR VOTRE SÉCURITÉ / PARA SU SEGURIDAD

FOR YOUR SAFETY

Do not store or use gasoline or any other flammable liquids and vapours in the vicinity of this or any other appliance.

POUR VOTRE SÉCURITÉ

Ne pas entreposer ou utiliser d'essence ou d'autres liquides ou vapeurs inflammables à proximité de cet appareil ou de tout autre appareil.

PARA SU SEGURIDAD

No guarde ni use gasolina o cualesquiera otros líquidos o vapores inflamables en las cercanías de éste o cualquier otro aparato.

WARNING: Improper installation, operation, adjustment, alteration, service or maintenance can cause property damage, injury or death. Read the installation and operating instructions thoroughly before installing, operating or servicing this equipment.

AVERTISSEMENT : Toute mauvaise pratique en matière d'installation, de fonctionnement, de réglage, de modification, d'entretien ou de maintenance peut causer des dommages matériels, des blessures ou la mort. Lisez la totalité des instructions d'installation et d'utilisation avant d'installer, d'utiliser ou d'entretenir cet équipement.

ADVERTENCIA: La indebida instalación, operación, ajuste, modificación, servicio o mantenimiento puede ocasionar daños a la propiedad, lesiones o muerte. Lea detenidamente las instrucciones de instalación y de operación antes de instalar, poner a funcionar o dar servicio a este equipo.

Do not spray aerosols in the vicinity of this appliance while it is in operation.

This appliance is not to be used by persons with reduced physical, sensory or mental capabilities, or lack of experience and knowledge, unless they have been given supervision or instruction concerning use of the appliance by a person responsible for their safety.

This appliance is not for use by children and they must be supervised not to play with it.

Retain this manual for your reference.

Ne pas pulvériser des aérosols dans le voisinage de cet appareil alors qu'il est en fonctionnement.

Cet appareil ne doit pas être utilisé par des personnes dont les capacités physiques, sensorielles ou mentales sont réduites, ou des personnes dénuées d'expérience ou de connaissance, sauf si elles ont pu bénéficier, par l'intermédiaire d'une personne responsable de leur sécurité, d'une surveillance ou d'instructions préalables concernant l'utilisation de l'appareil.

Cet appareil n'est pas destiné à être utilisé par des enfants et ils doivent être surveillés pour s'assurer qu'ils ne jouent pas avec l'appareil.

Conservez ce manuel pour votre référence.

No pulverice aerosoles en las proximidades de este aparato mientras está en funcionamiento.

Este aparato no debe ser utilizado por personas con capacidades físicas, sensoriales o mentales reducidas, o que no tengan la experiencia y los conocimientos adecuados, a menos que estas personas hayan recibido supervisión e instrucciones en cuanto al uso del aparato por la persona responsable de la seguridad de ellas.

Este aparato no debe ser usado por los niños y ellos deben ser supervisados para que no jueguen con el aparato.

Guarde este manual para su referencia.



WARNING / AVERTISSEMENT / ADVERTENCIA



Improper installation, operation, adjustment, alteration, service or maintenance can cause property damage, injury or death. Read the installation and operating instructions thoroughly before installing, operating or servicing this equipment. / Toute mauvaise pratique en matière d'installation, de fonctionnement, de réglage, de modification, d'entretien ou de maintenance peut causer des dommages matériels, des blessures ou la mort. Lisez la totalité des instructions d'installation et d'utilisation avant d'installer, d'utiliser ou d'entretenir cet équipement. / La indebida instalación, operación, ajuste, modificación, servicio o mantenimiento puede ocasionar daños a la propiedad, lesiones o muerte. Lea detenidamente las instrucciones de instalación y de operación antes de instalar, poner a funcionar o dar servicio a este equipo.



Hot product and surfaces. / Produit et surfaces chaudes. / Producto y superficies calientes.

Do not touch. / Ne pas toucher. / No la toque



Keep hands away from moving parts and pinch points. / Gardez les mains loin des pièces mobiles et des points de pincement. / Mantenga las manos lejos de piezas móviles y puntos de presión muy localizada.



Inspect unit daily for proper operation. / Inspectez l'unité tous les jours pour son bon fonctionnement. / Inspeccione diariamente el funcionamiento correcto de la unidad.



Surfaces and product may be hot! Wear protective equipment. / Les surfaces et le produit peuvent être chauds! Portez un équipement de protection. / ¡Las superficies y el producto pueden estar calientes! Utilice equipo protector.



Floor may become slippery from product spillage. / Déversement de produit peut causer de plancher à être glissant. / Derrame de producto puede causar piso a ser resbaladizo.



Unit must be anchored as per manual. / Unité doit être ancrée selon les directives du manuel. / Unidad debe estar fijado según el manual.



Heavy / Lourd / Pesado

Team or mechanical lift. / Équipe ou remontée mécanique. / Equipo o elevador mecánico.

SERVICING / ENTRETIEN / SERVICIO

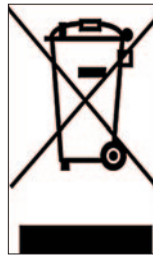


Remove electrical power prior to servicing. / Coupez l'alimentation électrique avant l'entretien. / Desconecte la energía eléctrica antes de darle servicio.

Risk of electric shock. / Risque de choc électrique. / Riesgo de choque eléctrico.



Have a qualified service technician maintain your equipment. / Demandez à un technicien en entretien et en réparation qualifié d'effectuer l'entretien de votre équipement. / Haga que un técnico de servicio calificado mantenga su equipo



DISPOSAL INSTRUCTIONS

This unit is recyclable. Do not dispose in landfill.

The majority of the unit is composed of stainless steel. Other alloys and electrical components make up a small percentage of the total. Follow Federal, state and local regulations for disposal.

INSTALLATION

GENERAL

Installation of the kettle must be accomplished by qualified electrical installation personnel working to all applicable local and national codes. Improper installation of product could cause injury or damage.

This equipment is built to comply with applicable standards for manufacturers. Included among those approval agencies are: UL, NSF, ASME/Ntl. Bd., CSA, CGA, ETL, and others. Many local codes exist, and it is the responsibility of the owner/installer to comply with these codes.

USES

This unit has been designed to dispense water in a commercial cooking environment when installed as per the manual. This unit has not been tested or approved for other uses than stated above.

RECEIVING INSPECTION

Before unpacking visually inspect the unit for evidence of damage during shipping.

If damage is noticed, do not unpack the unit, follow Shipping Damage Instructions shown below.

SHIPPING DAMAGE INSTRUCTIONS

If shipping damage to the unit is discovered or suspected, observe the following guidelines in preparing a shipping damage claim.

1. Write down a description of the damage or the reason for suspecting damage as soon as it is discovered. This will help in filling out the claim forms later.
2. As soon as damage is discovered or suspected, notify the carrier that delivered the shipment.
3. Arrange for the carrier's representative to examine the damage.
4. Fill out all carrier claims forms and have the examining carrier sign and date each form.

ASSEMBLY

The water meter only requires the mounting of the water faucet or a flexible hose. Install these only after the balance of the installation is complete.

To mount the hose assembly simply unpack it from its box and thread the swivel elbow onto the water meter. Connect the hose to the swivel elbow. Thread the filler nozzle onto the end of the hose.

To mount the faucet assembly simply unpack it from its box and thread the swivel elbow onto the water meter.

APPROXIMATE WEIGHTS

Model #	Unit	Unit with shipping box
WM	25 lbs.	35 lbs.



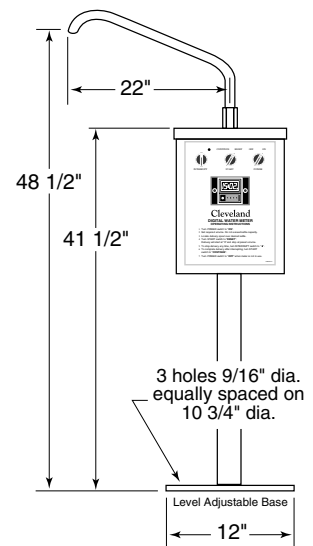
UTILITIES

1. 115V or 220V grounded receptacle within five feet of installation location.
2. Three quarter inch potable cold water line. Unit will not withstand hot water, use only cold water (80° F maximum).

NOTE: Units with optional Badger meters can be connected to hot water.

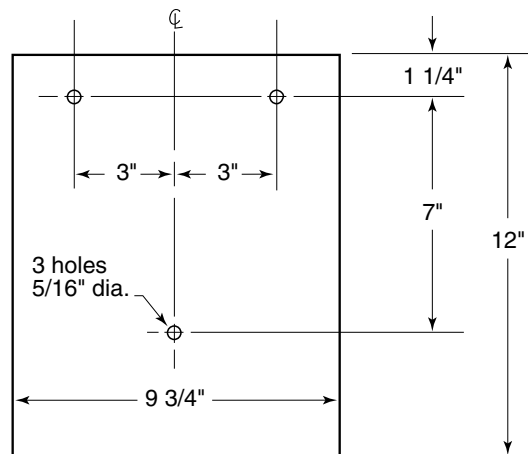
STAND OR TABLE MOUNT

1. Remove Top Cover
2. Position the unit in its' permanent location. If mounting to a Cleveland Stand, bolt to the stand and position stand in its' permanent location.
3. Bolt unit in place.
4. Connect cold water supply.
5. Replace cover.
6. Install faucet or hose assembly.
7. Plug power cord into receptacle



WALL MOUNTING

1. Determine the permanent



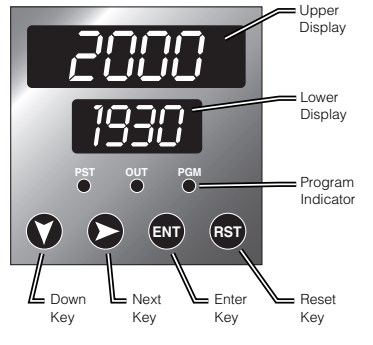
location of the unit.

2. Locate and mark holes to drill for anchor bolts.
3. Anchor unit to the wall.
4. Connect cold water supply.
5. Replace cover.
6. Install faucet or hose assembly.
7. Plug power cord into receptacle.

OPERATING INSTRUCTIONS

GENERAL OPERATION

Note: The digital counter has been preset at the factory and should operate satisfactory. If installing a new counter (or the configuration settings to your existing digital counter become corrupted) you must configure the digital counter as shown on page 6 (**Configuring a Digital Counter**) prior to operation.



1 Turn POWER switch "ON".

2 Set required volume by first pushing the **ENT** key until the digit you want to change is flashing in the lower display. Then use the **▼** key to change the value of the selected digit.

When all digits are set, press the **ENT** key.



3 Locate delivery spout over desired kettle.



4 Turn START switch to "RESET". Delivery will start at "0" and stop at preset volume.



5 To stop delivery at any time, turn INTERRUPT switch to "•".



6 To complete delivery after interrupting, turn START switch to "CONTINUE".



7 Turn POWER switch to "OFF" when meter is not in use.

CARE & CLEANING

1. Disconnect unit power source by unplugging power cord from wall receptacle.
2. Prepare a warm water and mild detergent solution.
3. Using a clean cloth wipe the units exterior. For food deposits a nylon brush can be used.

WARNING: Steel wool should never be used for cleaning the water meter. Particles of the steel wool become embedded in the surface and rust. This will weaken and corrode the stainless steel surface.

PREVENTATIVE MAINTENANCE

FOR MAINTENANCE AND REPAIRS CONTACT YOUR AUTHORIZED MANITOWOC SERVICE AGENCY AND HAVE A QUALIFIED SERVICE TECHNICIAN MAINTAIN YOUR EQUIPMENT.



Refer to maintenance procedures and parts list manual for detailed maintenance and testing instructions.



WARNING / AVERTISSEMENT / ADVERTENCIA

If for any reason this unit is not functioning correctly
DO NOT OPERATE.

Contact your authorized service agent.



DAILY PRE-STARTUP INSPECTION

1. Switches are in good condition and working order.
2. Faucet spout rotates smoothly and does not leak.

SIX MONTH SERVICE INSPECTION

1. Inspect electrical cord for frays or damage.
2. Fasteners securing panels and cover are in place and tight.
3. Ensure unit is securely fastened to wall or base.

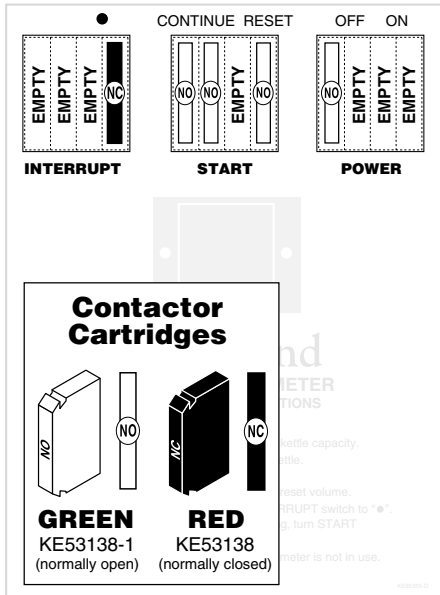
MAINTENANCE

GENERAL MAINTENANCE

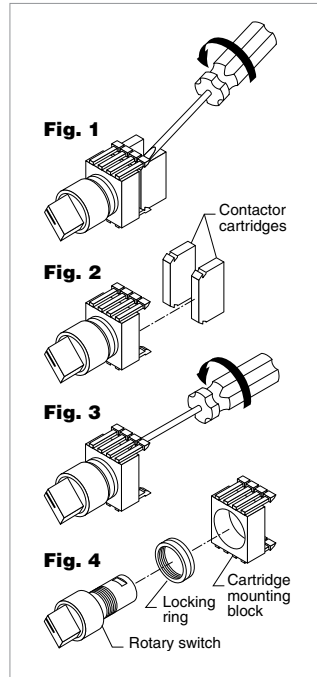
A Water Meter requires very little preventive maintenance, other than daily cleaning. The only item subject to wear is the "O" rings on the discharge assembly. These must be replaced when the problem is discovered.

WARNING: It is imperative to the life of the equipment that any failed seal be replaced immediately.

SWITCH CONFIGURATION & DISASSEMBLY



Contactor Locations Drawing



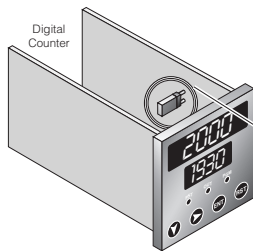
Switch Assembly Drawing

DISASSEMBLY OF SWITCH ASSEMBLY

1. Place slotted screwdriver between contactor cartridge and cartridge mounting block as shown in **Fig.1**.
 2. Twist screwdriver to free cartridge.
 3. Place screwdriver under tab in the back of the cartridge mounting block as shown in **Fig. 3**.
 4. Twist screwdriver to remove block from the rotary switch.
3. Unscrew locking ring to remove rotary switch.

CONFIGURING A DIGITAL COUNTER

This procedure is only necessary when installing a replacement counter or settings to existing counter become corrupted.



Changing to Configuration Mode

- 1 To enter Configuration Mode, turn POWER switch "OFF" and remove counter from its' housing.
- 2 Change the position of the jumper. **Note:** The actual position is irrelevant, as long as the position is changed.
- 3 Replace the counter in its' housing and turn POWER switch "ON".

Editing the Parameter Settings

After changing the jumper position (see above instructions - **Changing to Configuration Mode**), edit the parameters as follows:

- Note:** The PGM (program) indicator will flash while the counter is in the configuration mode.
- 1 Use the **▼** key to step through the parameters.
 - 2 When the desired parameter description is shown in the upper display (see **Parameters Chart**), press the **▶** key to enter the edit mode and to scroll through the available settings.
 - 3 When the desired setting is shown, press the **ENT** key.
 - 4 To exit the Configuration Mode, momentarily remove power from counter or press and hold down the **RST** key for at least two seconds.

Parameters Chart	Parameter Description (Upper Display - in order of appearance)	Required Settings (Lower Display)
Counter Speed	SPEE	20 20 Hz.
Input Operation	InPu	A-B A-B (Add/Subtract)
Panel Reset Key	PrES	EnRb Enable
Auto Reset	ArES	EnRb Enable
Input Pull-Ups	PULL	no No (Current-Sourcing)
Count Direction	Cdir	uP Up-Counting
Lock Strategy	Loc	nonE None

Use **▼** key to step through parameters.

Use **▶** key to step to setting shown below.

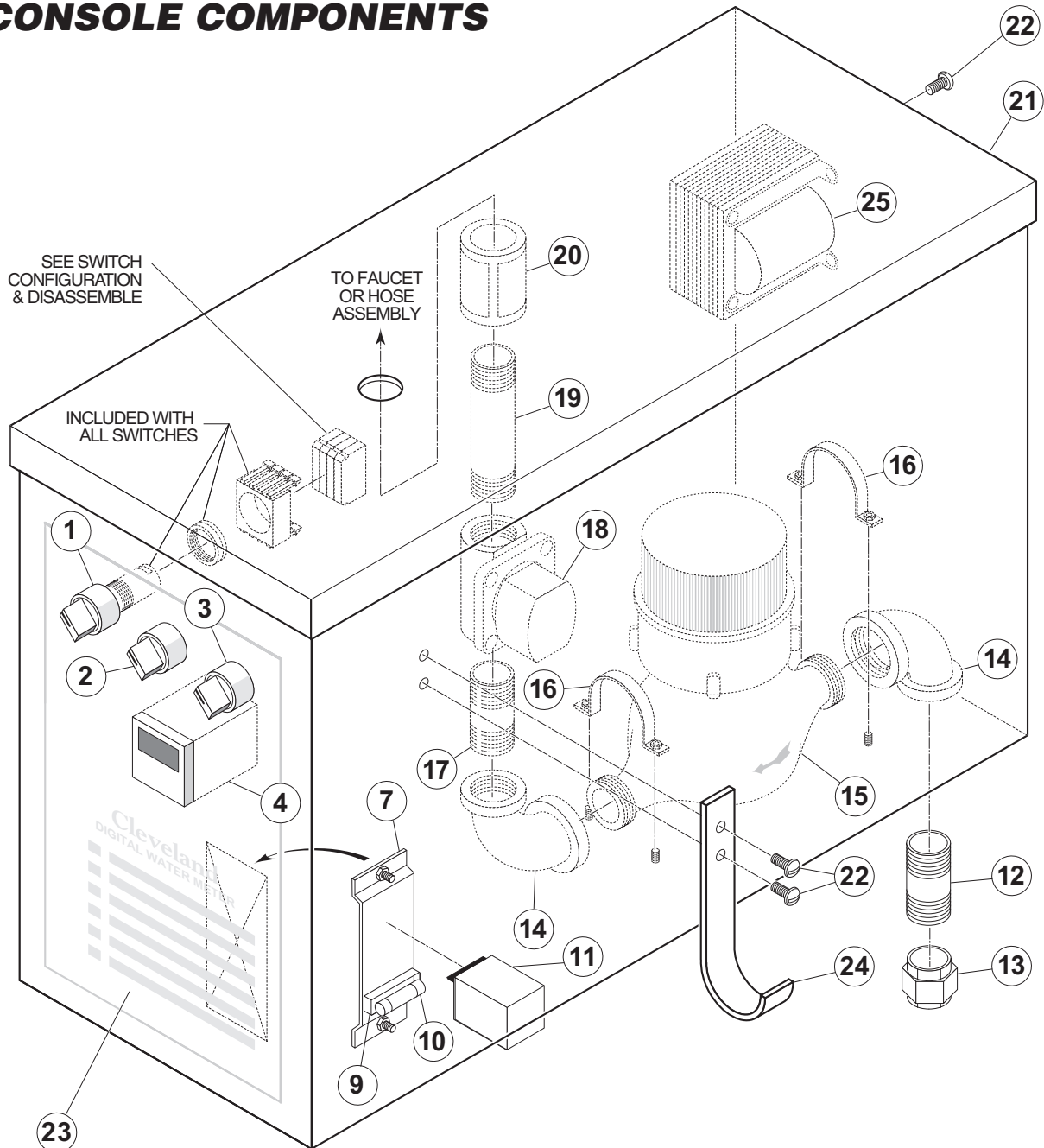
SERVICE PARTS

WARRANTY

Our Company supports a worldwide network of Maintenance and Repair Centers. Contact your nearest Maintenance and Repair Centre for replacement parts, service, or information regarding the proper maintenance and repair of your cooking equipment

In order to preserve the various agency safety certification (UL, NSF, ASME/Ntl. Bd., etc.), only factory-supplied replacement parts should be used. The use of other than factory supplied replacement parts will void warranty.

CONSOLE COMPONENTS

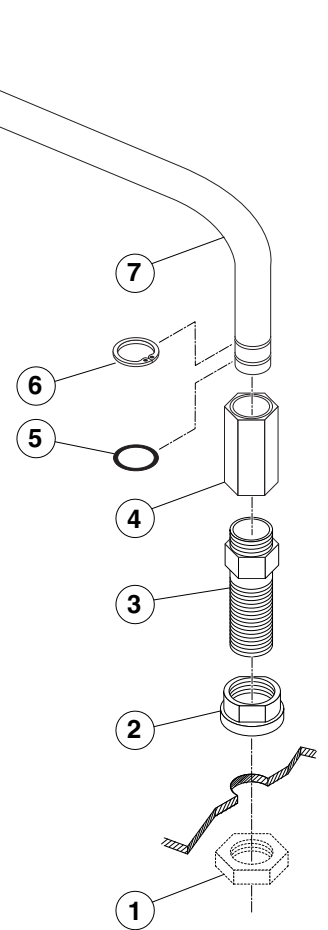


CONSOLE COMPONENTS

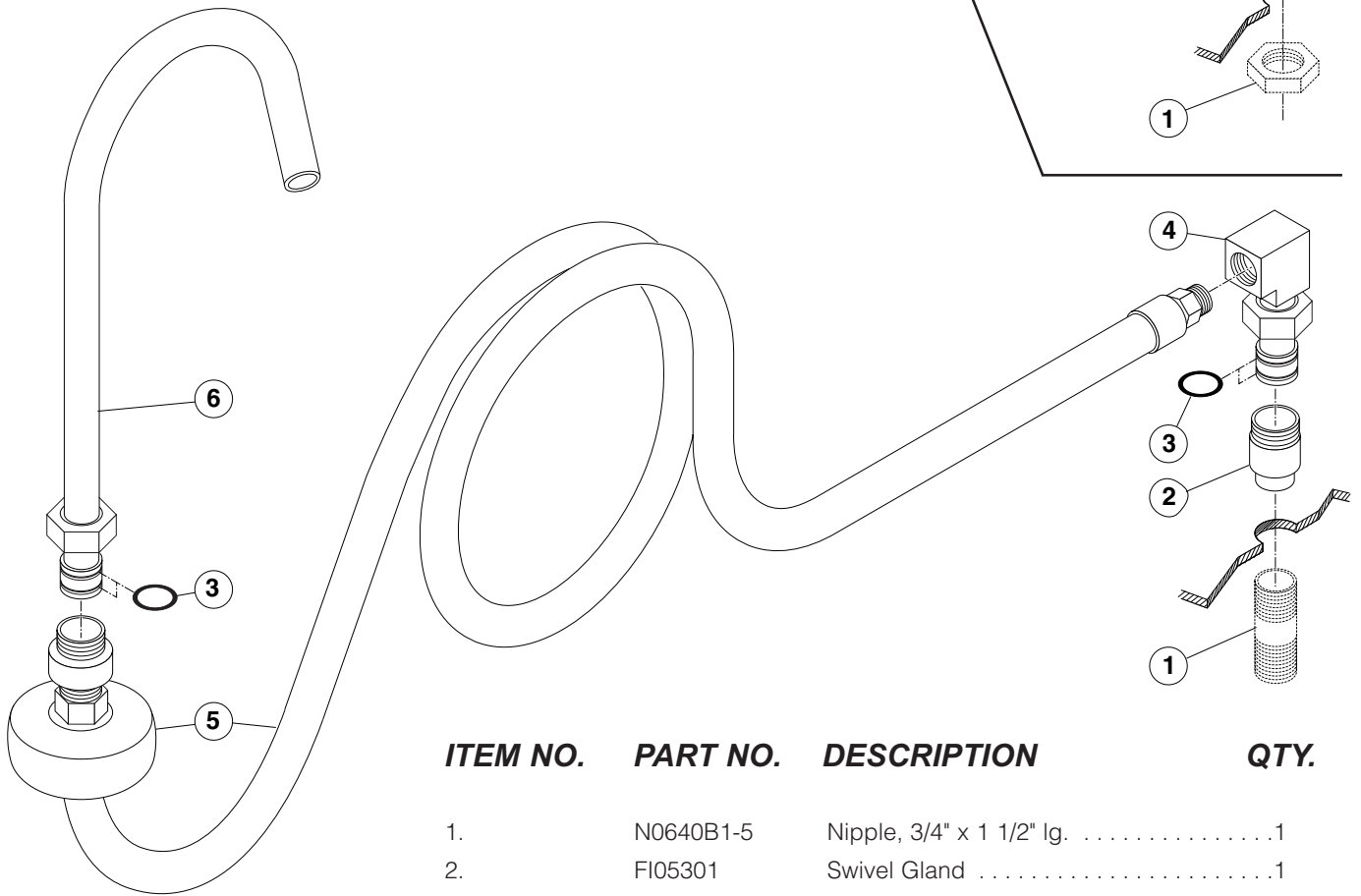
ITEM NO.	PART NO.	DESCRIPTION	QTY.
1.	KE003209-6	Switch, ON/OFF Spring Return, Momentary	1
2.	KE003209-7	Switch, ON/OFF/ON Spring Return, Left/Right	1
3.	KE003209-1	Switch Assembly, On/Off - Maintained	1
4.	KE53257	Digital Counter	1
7.	KE50343-6	Mounting Plate	1
9.	KE51139	Holder, Fuse	1
10.	KE52936-3	Fuse, 1 Amp.	1
11.	KE50753-10	Relay	1
12.	N0640B2	Nipple, 3/4" x 2" lg.	1
13.	FI00096	Union, 3/4" NTP	1
14.	FI00063	90° Elbow 3/4" x 3/4" (Gallon Meters & Quart Meter)	2
	FI00365	90° Reducing Elbow 1" x 3/4" (Litre Meter)	2
15.	KE51861	Gallon Meter, cold water (Rockwell)	1
	KE51860	Litre Meter, cold water (Hays)	1
	KE54336	Gallon Meter, hot water (Badger)	1
	KE54336-1	Quart Meter, hot water (Badger)	1
16.	KE52004	Strap	2
17.	N0640B1-5	Close Nipple 3/4" NPT x 1 1/2" lg.	1
18.	KE54834-5	Solenoid Valve, 3/4", 120V/60 Hz., HW	1
19.	N0640B4-25	Long Nipple, 3/4" NTP x 4 1/4" lg.	1
	N0640B4-75	Long Nipple, 3/4" NTP x 4 3/4" lg.	1
20.	FI00267	Coupling, 3/4" x 3/4"	1
21.	KE50719-2	Top Cover (Stand or Table Mounted)	1
	KE50719-1	Top Cover (Wall Mounted)	1
22.	FA11091	Screw, 8 x 32 x 3/8" lg. (Stand or Table Mounted)	2
		Screw, 8 x 32 x 3/8" lg. (Wall Mounted)	3
23.	KE95355	Front Label (English)	1
24.	KE54505	Hose Bracket	1
25.	KE53838-15	Transformer (high voltage only), 220/120V, 50/60 Hz., (220V option)	1

FAUCET ASSEMBLY

ITEM NO.	PART NO.	DESCRIPTION	QTY.
1.	SD50098	Locknut, 3/4" NPT	1
2.	KE51585	Faucet Spout Fitting	1
3.	SD50097	Flanged Nut, 3/4" NTP, Chrome Plated	1
4.	KE51736	Long Faucet Nut	1
5.	FA05002-19	"O" Ring	1
6.	FA95022	Retaining Ring	1
7.	KE50825-4	Faucet Spout	1



HOSE ASSEMBLY



ITEM NO.	PART NO.	DESCRIPTION	QTY.
1.	N0640B1-5	Nipple, 3/4" x 1 1/2" lg.	1
2.	FI05301	Swivel Gland	1
3.		"O" Ring	4
4.	FI05302	Swivel Elbow	1
5.	KE54511	Filler Hose	1
6.	KE54512	Swivel Gooseneck Spout	1

Every new piece of Welbilt Foodservice equipment comes with KitchenCare® and you choose the level of service that meets your operational needs from one restaurant to multiple locations

StarCare – Warranty & lifetime service, certified OEM parts, global parts inventory, performance audited

ExtraCare — CareCode, 24/7 Support, online/mobile product information

LifeCare – Install & equipment orientation, planned maintenance, KitchenConnect™, MenuConnect®

Talk with KitchenCare® • 1-844-724-CARE • www.mtwkitchencare.com



To learn how Welbilt Foodservice and its leading brands can equip you, visit our global web site at www.welbilt.com, then discover the regional or local resources available to you.