

TTVac-V Assembly Drawings

Machine Assembly

| | |
|---------|---------------------------------|
| TTVac-V | TTVac-V Assembly |
| 00-5810 | TTVac Waste Tank Assembly |
| 00-6059 | TTVac Frame Assembly |
| 00-0805 | Shut-Off Valve Assembly |
| 00-0813 | Goose Neck Pipe Assembly |
| 00-4136 | Pump - Vacuum 3/4 HP Parts List |
| 00-4153 | Waste Tank Sub-Assembly |
| 00-4527 | Lubrication Assembly |
| 00-8065 | Shurvac Nozzle |

For SZ4135 and SZ2105 Clippers

| | |
|---------|-----------------------|
| 00-5321 | Pipe Adapter Assembly |
|---------|-----------------------|

For Clippers Other Than SZ4135 and SZ2105

| | |
|---------|-----------------------|
| 00-5399 | Pipe Adapter Assembly |
|---------|-----------------------|

Options

Caster Option

| | |
|---------|------------------|
| 00-7596 | TTVac Caster Kit |
|---------|------------------|

Vacuum Nozzle Options

| | |
|---------|------------------------|
| 00-0424 | Spit Nozzle Assembly |
| 00-8066 | Vacuum Nozzle Assembly |

100V Class Vacuum Pump Option

| | |
|---------|--|
| 00-7782 | 3/4 HP 100V Class Vacuum Pump Assembly |
| 00-3506 | On/Off Switch Assembly, Eaton 8-12 A |

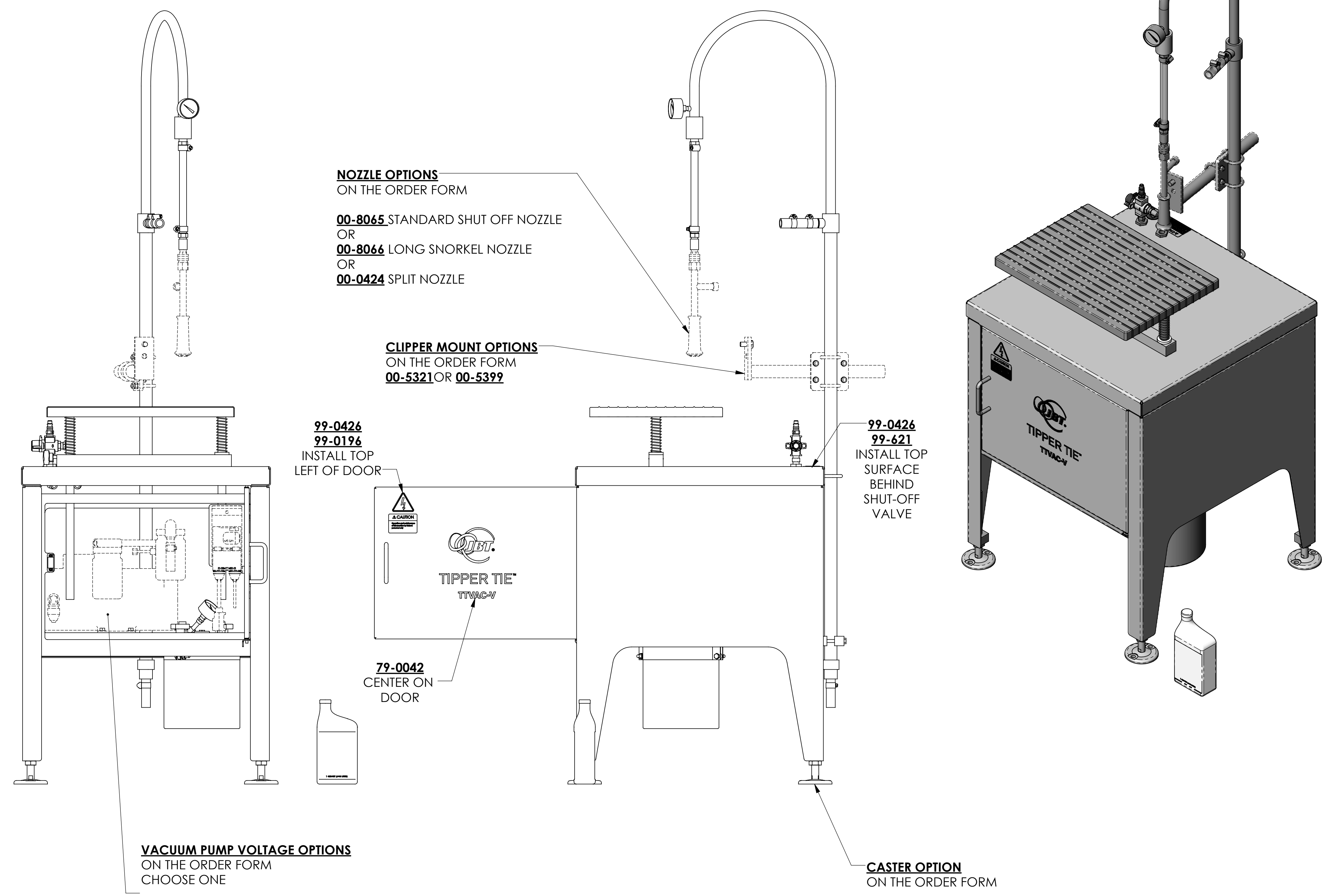
200V Class Vacuum Pump Option

| | |
|---------|--|
| 00-7783 | 3/4 HP 200V Class Vacuum Pump Assembly |
| 00-3505 | On/Off Switch Assembly, Eaton 4-6.3 A |

Gas Flush Options

| | |
|---------|-------------------------------|
| 00-5325 | Vacuum Nozzle Assembly |
| 00-5359 | Gas Flush Valve Assembly |
| 00-5363 | Waste Tank Cover Assembly |
| 00-5364 | CV-E Gas Flush Conversion Kit |

| ITEM NO. | QTY | PART NUMBER | DESCRIPTION |
|----------|-----|-------------|--------------------------------|
| 1 | 1 | 00-0813 | GOOSENECK PIPE ASSY |
| 2 | 1 | 00-5810 | TTVAC WASTE TANK ASSEMBLY |
| 3 | 1 | 00-6059 | TTVAC FRAME ASSEMBLY |
| 4 | 1 | 01-0157 | SUB-PRODUCT TABLE |
| 5 | 1 | 01-0159 | PRODUCT TABLE |
| 6 | 1 | 07-0627 | TTVAC-V TABLE TOP |
| 7 | 1 | 07-0706 | TTVAC DOOR ASSEMBLY |
| 8 | 1 | 10-6974 | TTVAC CORD BRACKET |
| 9 | 1 | 10-8112 | MAGNET SPACER |
| 10 | 2 | 16-1348 | TTVAC U-BOLT SPACER |
| 11 | 2 | 17-0151 | SPRING-COMP .94 X 9.00 SST.090 |
| 12 | 1 | 20-0179 | SOLID 5 LOBE KNOB W/M8X30 STUD |
| 13 | 1 | 21-0373 | VALVE-SHUT OFF 3/8 NPT |
| 14 | 1 | 24-9933 | 1 QT GAST AD220 SAE 10 OIL |
| 15 | 3 | 28-0186 | PLFTG-MALE ELBOW 12MM-3/8BSPT |
| 16 | 3 | 28-0521 | 3/4 IN VACUUM HOSE |
| 17 | 3 | 28-0552 | HOSE CLAMP 6812 SS |
| 18 | 1 | 28-3640 | 3/8 MUFFLER |
| 19 | 1 | 28-9056 | 3/8 QDISC FITTING BRASS |
| 20 | 1 | 28-9093 | 3/8 HEX NIPPLE BRASS |
| 21 | 2 | 28-9779 | 3/8 NPT BULKHEAD FITTING |
| 22 | 4 | 29-0178 | M8 ELASTIC LOCKNUT SST |
| 23 | 2 | 29-0216 | M8 X 90 MM LG HH SST DIN 931 |
| 24 | 2 | 29-0687 | M8 X 16 MM LG HH SST DIN 933 |
| 25 | 8 | 29-0688 | M8 X 20 MM LG HH SST DIN 933 |
| 26 | 1 | 29-0716 | M12 X 25 MM LG HH SST DIN 933 |
| 27 | 4 | 29-0869 | M4 X 12 MM LG SH SST |
| 28 | 2 | 29-1128 | M6 HEX NUT SST |
| 29 | 8 | 29-1129 | M8 HEX NUT SST |
| 30 | 4 | 29-1169 | M4 ACORN CAP NUT SST DIN 1587 |
| 31 | 4 | 29-1388 | DRIVE SCREW - SST |
| 32 | 1 | 29-1542 | M8 X 54LG X 44W U-BOLT |
| 33 | 1 | 29-9315 | 3/8-16 X 1 LG HH SST |
| 34 | 1 | 31-0852 | GAUGE- 0/30 HG VAC, 2.00 DIAL |
| 35 | 1 | 38-0866 | LOCK BAR BEARING |
| 36 | 1 | 49-0173 | CVE/CVW COMBO PALLET |
| 37 | 1 | 49-4565 | CARTON CVE |
| 38 | 2 | 99-0196 | LBL-CAUTION OPR MAINT BY TRAIN |
| 39 | 1 | 99-0426 | LABEL-INT'L ELECTRICAL SYMBOL |
| 40 | 1 | 99-0621 | LABEL-INT'L LOCK-OUT (LARGE) |
| 41 | 1 | 99-1030 | NAME PLATE PNEUM-ELECTRICAL CE |
| 42 | 2 | 99-1181 | 4MM ID FLAT WASHER SST |
| 43 | 4 | 99-1184 | 8MM ID FLAT WASHER SST |
| 44 | 1 | 99-1397 | MAGNET CATCH |
| 45 | 1 | 99-7470 | TTVAC LOCK BAR |

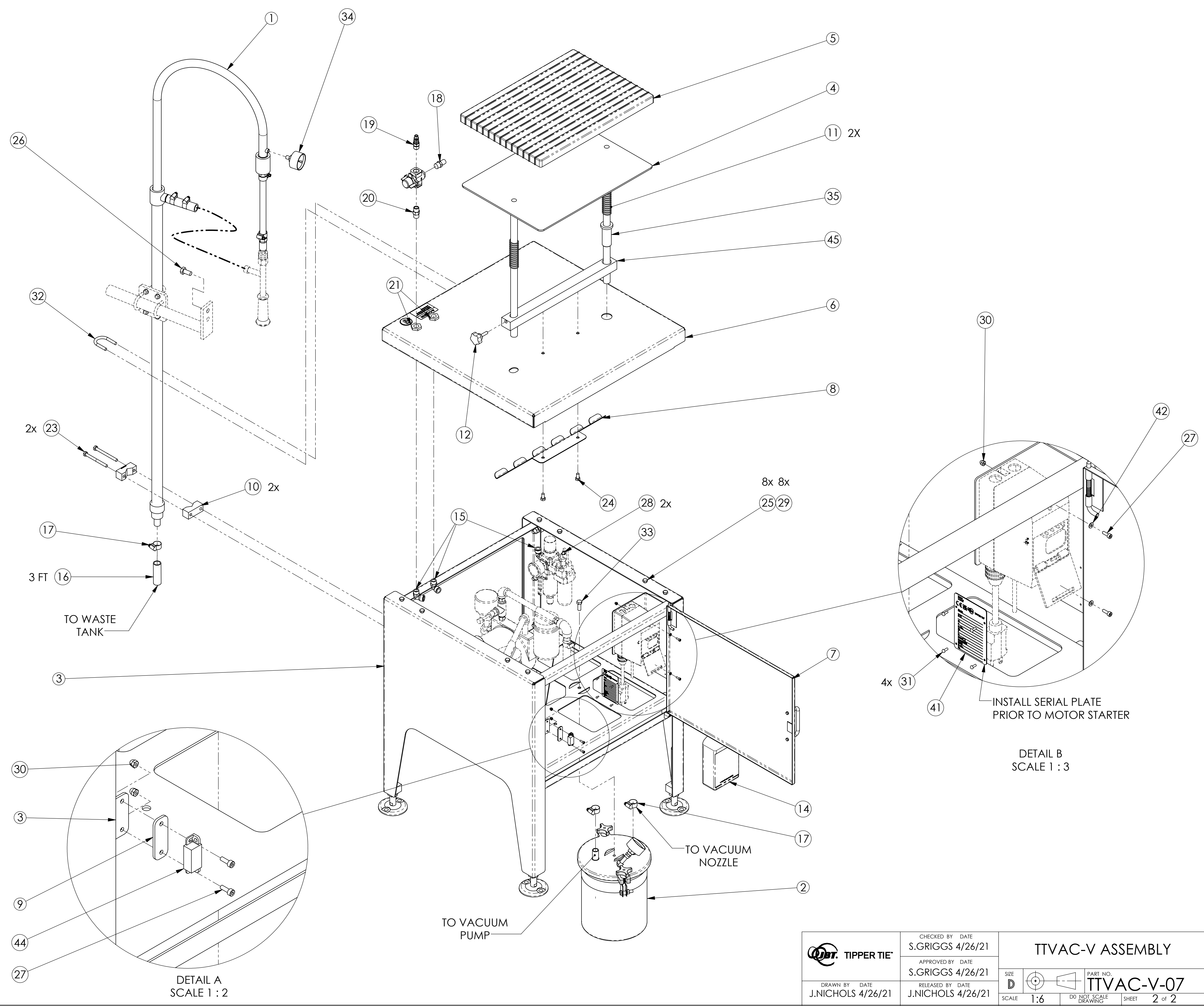


| NO. | ZONE | DESCRIPTION | DATE | APPROVED | NO. | ZONE | DESCRIPTION | DATE | APPROVED |
|-----|------|--------------------|----------|----------|-----|------|--------------------|----------|----------|
| 07 | | SEE ECN TTVAC-V-07 | 11/29/23 | CJS | 04 | | SEE ECN TTVAC-V-04 | 05/05/23 | SDG |
| 06 | | SEE ECN TTVAC-V-06 | 08/28/23 | CJS | 03 | | SEE ECN TTVAC-V-03 | 01/19/23 | JAN |
| 05 | | SEE ECN TTVAC-V-05 | 06/21/23 | CJS | 02 | | SEE ECN TTVAC-V-02 | 04/25/22 | JAN |
| | | | | | 01 | | SEE ECN TTVAC-V-01 | 04/19/22 | JAN |

| | | |
|------------------|-------------------|------------------|
| | CHECKED BY DATE | S.GRIGGS 4/26/21 |
| | APPROVED BY DATE | S.GRIGGS 4/26/21 |
| DRAWN BY DATE | J.NICHOLS 4/26/21 | |
| RELEASED BY DATE | J.NICHOLS 4/26/21 | |

TTVAC-V ASSEMBLY
 PART NO. **TTVAC-V-07**
 SCALE 1:6
 SHEET 1 of 2

| ITEM NO. | QTY. | PART NUMBER | DESCRIPTION |
|----------|------|-------------|--------------------------------|
| 1 | 1 | 00-0813 | GOOSENECK PIPE ASSY |
| 2 | 1 | 00-5810 | TTVAC WASTE TANK ASSEMBLY |
| 3 | 1 | 00-6059 | TTVAC FRAME ASSEMBLY |
| 4 | 1 | 01-0157 | SUB-PRODUCT TABLE |
| 5 | 1 | 01-0159 | PRODUCT TABLE |
| 6 | 1 | 07-0627 | TTVAC-V TABLE TOP |
| 7 | 1 | 07-0706 | TTVAC DOOR ASSEMBLY |
| 8 | 1 | 10-6974 | TTVAC CORD BRACKET |
| 9 | 1 | 10-8112 | MAGNET SPACER |
| 10 | 2 | 16-1348 | TTVAC U-BOLT SPACER |
| 11 | 2 | 17-0151 | SPRING-COMP .94 X 9.00 SST.090 |
| 12 | 1 | 20-0179 | SOLID 5 LOBE KNOB W/M8X30 STUD |
| 13 | 1 | 21-0373 | VALVE-SHUT OFF 3/8 NPT |
| 14 | 1 | 24-9933 | 1 QT GAST AD220 SAE 10 OIL |
| 15 | 3 | 28-0186 | PLFTG-MALE ELBOW 12MM-3/8BSPT |
| 16 | 3 | 28-0521 | 3/4 IN VACUUM HOSE |
| 17 | 3 | 28-0552 | HOSE CLAMP 6812 SS |
| 18 | 1 | 28-3640 | 3/8 MUFFLER |
| 19 | 1 | 28-9056 | 3/8 QDISC FITTING BRASS |
| 20 | 1 | 28-9093 | 3/8 HEX NIPPLE BRASS |
| 21 | 2 | 28-9779 | 3/8 NPT BULKHEAD FITTING |
| 22 | 4 | 29-0178 | M8 ELASTIC LOCKNUT SST |
| 23 | 2 | 29-0216 | M8 X 90 MM LG HH SST DIN 931 |
| 24 | 2 | 29-0687 | M8 X 16 MM LG HH SST DIN 933 |
| 25 | 8 | 29-0688 | M8 X 20 MM LG HH SST DIN 933 |
| 26 | 1 | 29-0716 | M12 X 25 MM LG HH SST DIN 933 |
| 27 | 4 | 29-0869 | M4 X 12 MM LG SH SST |
| 28 | 2 | 29-1128 | M6 HEX NUT SST |
| 29 | 8 | 29-1129 | M8 HEX NUT SST |
| 30 | 4 | 29-1169 | M4 ACORN CAP NUT SST DIN 1587 |
| 31 | 4 | 29-1388 | DRIVE SCREW - SST |
| 32 | 1 | 29-1542 | M8 X 54LG X 44W U-BOLT |
| 33 | 1 | 29-9315 | 3/8-16 X 1 LG HH SST |
| 34 | 1 | 31-0852 | GAUGE- 0/30 HG VAC, 2.00 DIAL |
| 35 | 1 | 38-0866 | LOCK BAR BEARING |
| 36 | 1 | 49-0173 | CVE/CVW COMBO PALLET |
| 37 | 1 | 49-4565 | CARTON CVE |
| 38 | 2 | 99-0196 | LBL-CAUTION OPR MAINT BY TRAIN |
| 39 | 1 | 99-0426 | LABEL-INT'L ELECTRICAL SYMBOL |
| 40 | 1 | 99-0621 | LABEL-INT'L LOCK-OUT (LARGE) |
| 41 | 1 | 99-1030 | NAME PLATE PNEUM-ELECTRICAL CE |
| 42 | 2 | 99-1181 | 4MM ID FLAT WASHER SST |
| 43 | 4 | 99-1184 | 8MM ID FLAT WASHER SST |
| 44 | 1 | 99-1397 | MAGNET CATCH |
| 45 | 1 | 99-7470 | TTVAC LOCK BAR |



| | | |
|------------------------------------|---------------------------------------|---|
| | CHECKED BY DATE S.GRIGGS 4/26/21 | TTVAC-V ASSEMBLY |
| | APPROVED BY DATE S.GRIGGS 4/26/21 | |
| DRAWN BY DATE J.NICHOLS 4/26/21 | RELEASED BY DATE J.NICHOLS 4/26/21 | PART NO. TTVAC-V-07 SCALE 1:6 SHEET 2 of 2 |

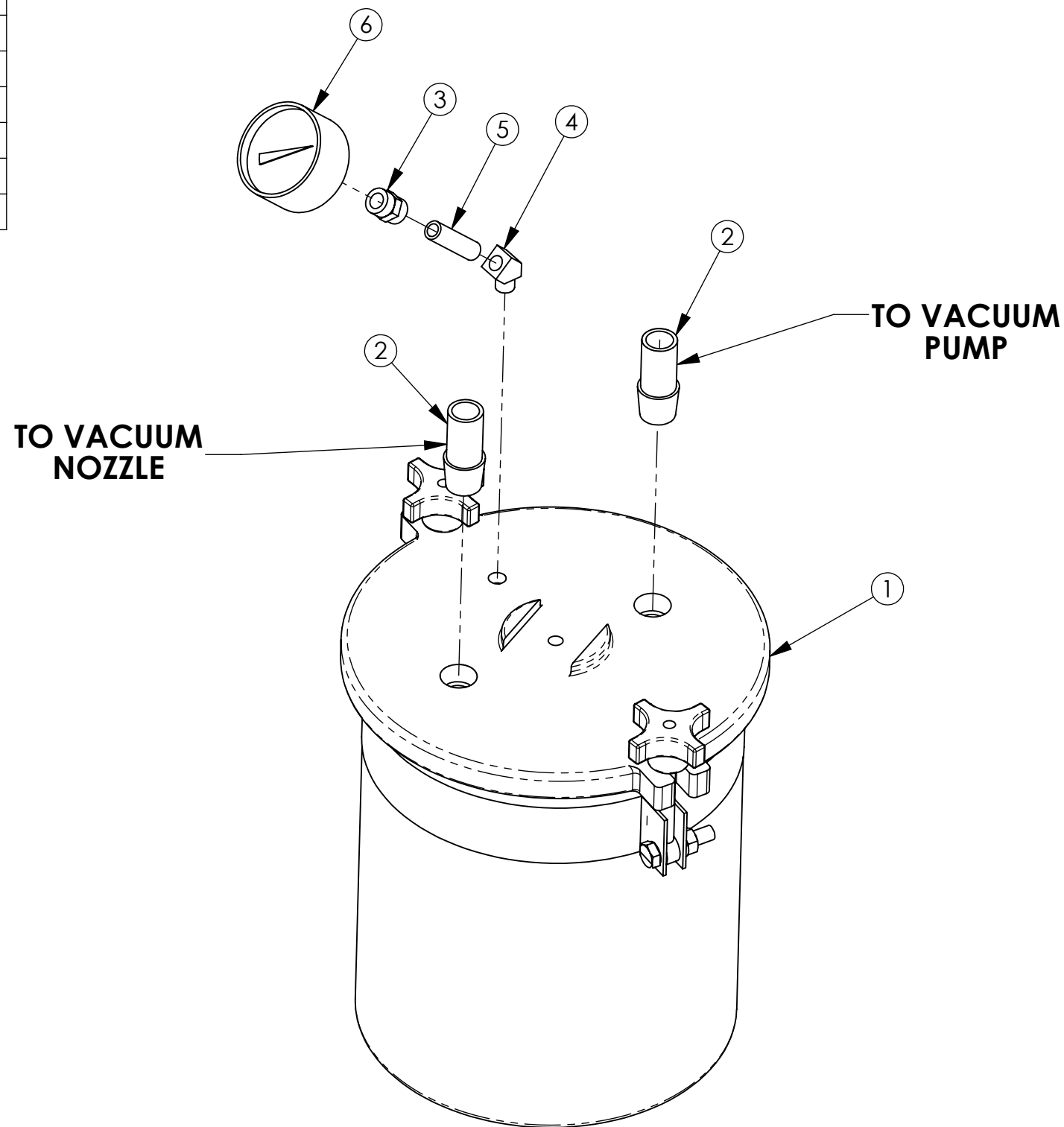
4

3

2

1

| ITEM NO. | PART NUMBER | DESCRIPTION | QTY. |
|----------|-------------|-------------------------------------|------|
| 1 | 00-4153 | WASTE TANK SUB-ASSY | 1 |
| 2 | 28-0399 | 1/2 NPT HALF NIPPLE SST MOD 28-1234 | 2 |
| 3 | 28-9057 | 1/8 NPT COUPLING BRASS | 1 |
| 4 | 28-9070 | 1/8 X 45 DEG STREET ELBOW BRASS | 1 |
| 5 | 28-9104 | 1/8 X 1-1/2 NIPPLE | 1 |
| 6 | 31-0852 | GAUGE-0-30 PSI 2.00 IN DIAL | 1 |



| NO. | ZONE | DESCRIPTION | DATE | APPROVED |
|-----------|------|-------------|------|----------|
| REVISIONS | | | | |



CHECKED BY DATE
S.GRIGGS 04/21/21

APPROVED BY DATE
S.GRIGGS 04/21/21

RELEASED BY DATE
J.NICHOLS 04/21/21

TTVAC WASTE TANK ASSEMBLY A

SIZE B

SCALE 1:12

PART NO. 00-5810-00

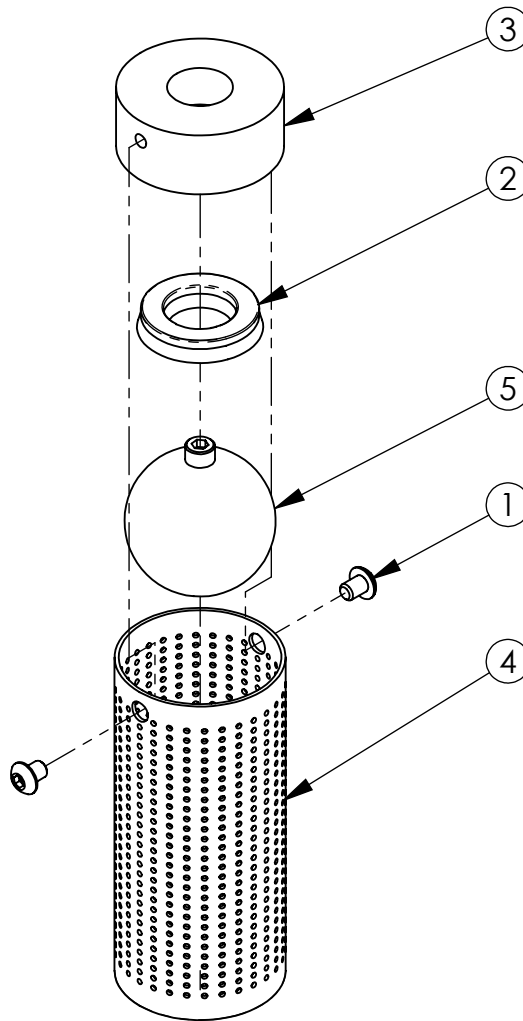
DO NOT SCALE DRAWING

SHEET 1 of 1

REVISIONS

| NO. | DESCRIPTION | DATE | APPROVED | NO. | DESCRIPTION | DATE | APPROVED |
|-----|-------------|------|----------|-----|-------------|------|----------|
| 01 | NO ECN DATA | | | | | | |
| | | | | | | | |
| | | | | | | | |

| ITEM NO. | PART NUMBER | DESCRIPTION | QTY. |
|----------|-------------|-----------------------|------|
| 1 | 29-9179 | 10-32 X 1/4 LG BH SST | 2 |
| 2 | 41-0849 | U CUP #AN-6226-16 | 1 |
| 3 | 99-0768 | CONNECTOR | 1 |
| 4 | 99-0769 | FILTER | 1 |
| 5 | 99-0848 | BALL | 1 |



CHECKED BY DATE
ST 09/02/11

APPROVED BY DATE
ST 09/02/11

RELEASED BY DATE
CDS 09/02/11

SHUT-OFF VALVE ASSY

SIZE
A

PART NO.
00-0805-01

SCALE 1:2

DO NOT SCALE
DRAWING

SHEET 1 of 1

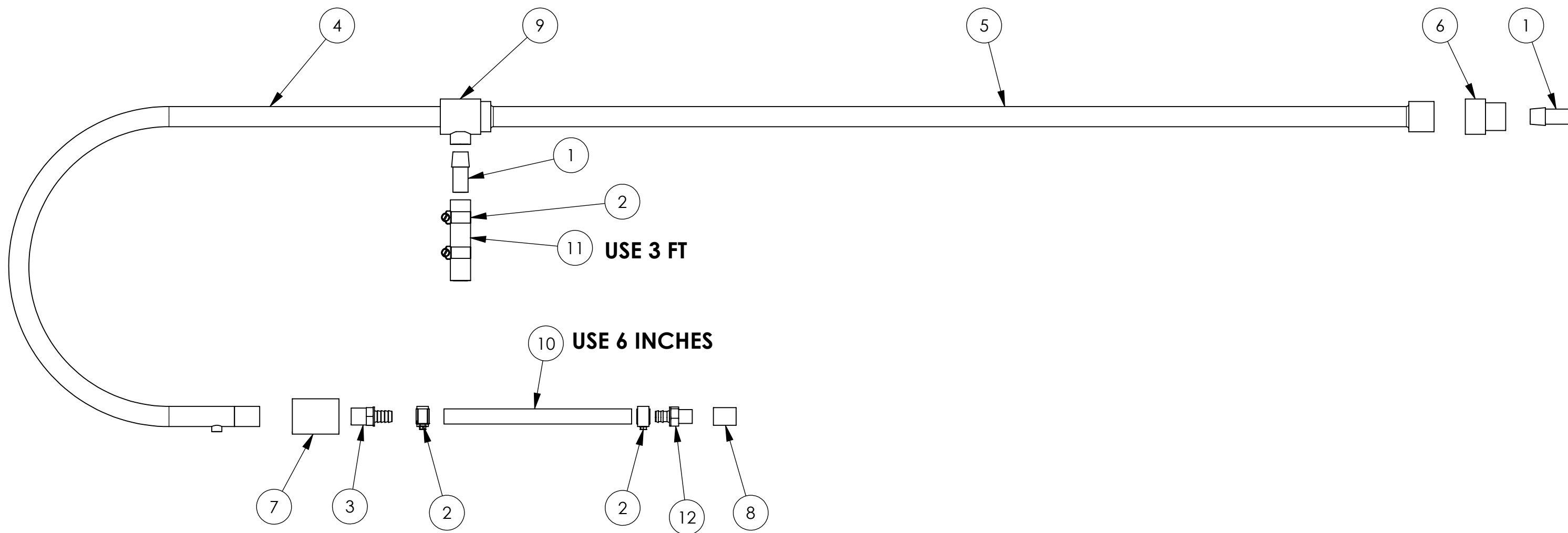
4

3

2

1

| ITEM NO. | PART NUMBER | DESCRIPTION | QTY. |
|----------|-------------|---|-------|
| 1 | 28-0399 | 1/2 NPT HALF NIPPLE SST MOD 28-1234 | 2 |
| 2 | 28-0552 | HOSE CLAMP 6812 SS | 4 |
| 3 | 28-0642 | 1/2 BARB X 1/2 NPT NIPPLE SST | 1 |
| 4 | 28-0840 | CURVED PIPE | 1 |
| 5 | 28-0841 | 1 X 48 PIPE SST | 1 |
| 6 | 28-0843 | 1/2 X 1 THD REDUCER COUPLING SST | 1 |
| 7 | 28-1001 | 1 X 1/2 FEM X FEM REDUCING COUPLING SST | 1 |
| 8 | 28-1253 | 3/8 COUPLING SST | 1 |
| 9 | 28-1258 | 1 X 1 X 1/2 TEE CPLT | 1 |
| 10 | 28-9962 | 1/2 ID HOSE NYLOBRADE | .5 FT |
| 11 | 28-9965 | 3/4 ID HOSE NYLOBRADE | 3 FT |
| 12 | 99-0728 | 1/2 HOSE X 3/8 MALE NPT | 1 |

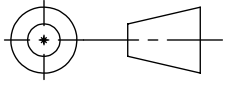


| NO. | ZONE | DESCRIPTION | DATE | APPROVED |
|-----------|------|--------------------|----------|----------|
| 10 | | SEE ECN 00-0813-10 | 12/10/19 | CDS |
| REVISIONS | | | | |

| | |
|-------------------------------|----------------------------------|
| JBT. TIPPER TIE™ | CHECKED BY DATE ST 10/19/11 |
| | APPROVED BY DATE ST 10/19/11 |
| | RELEASED BY DATE CDS 10/19/11 |
| DRAWN BY DATE CDS 10/19/11 | |

GOOSENECK PIPE ASSY

PART NO. **00-0813-10**

SIZE **B** 

SCALE **1:16** DO NOT SCALE DRAWING SHEET 1 of 1

CONFIDENTIAL AND PROPRIETARY - PROPERTY OF JBT CORPORATION AND/OR ITS AFFILIATES ("JBT"). Information in this document is confidential and proprietary and may not be reproduced in any form, distributed or divulged without the written permission of JBT

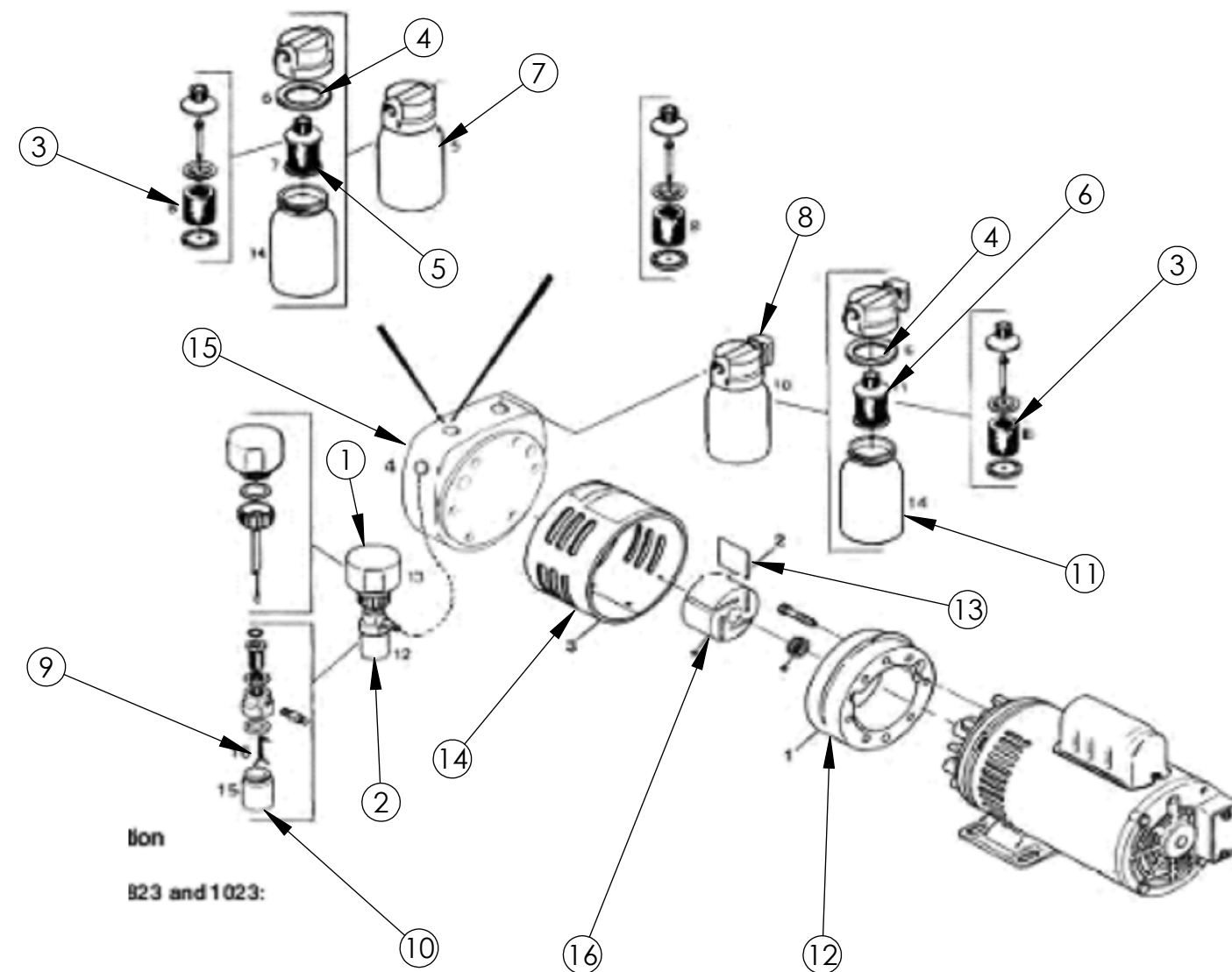
4

3

2

1

| ITEM NO | PART NUMBER | DESCRIPTION | QTY |
|---------|-------------|---------------------------|-----|
| 1 | 43-1314 | JAR-PLASTIC-OIL RESERVOIR | 1 |
| 2 | 43-1316 | OILER, GAST | 1 |
| 3 | 43-1344 | CARTRIDGE | 2 |
| 4 | 43-1350 | COVER GASKET | 2 |
| 5 | 43-1358 | FILTERING ELMT. | 1 |
| 6 | 43-1359 | MUFFLER ELEMENT | 1 |
| 7 | 43-1368 | INTAKE FILTER ASSY | 1 |
| 8 | 43-1369 | EXHAUST MUFFLER ASSY | 1 |
| 9 | 43-1392 | WICK | 1 |
| 10 | 43-1701 | JAR-PLASTIC | 1 |
| 11 | 43-1702 | JAR-PLASTIC | 2 |
| 12 | 43-2000 | BODY | 1 |
| 13 | 43-2001 | VANE (3/4 HP PUMP) | 4 |
| 14 | 43-2002 | SHROUD | 1 |
| 15 | 43-2003 | END PLATE | 1 |
| 16 | 43-2006 | ROTOR | 1 |



tion
823 and 1023:

REF. 27-1016

| NO. | ZONE | DESCRIPTION | DATE | APPROVED | DRAWN BY | DATE | CHECKED BY | DATE | APPROVED BY | DATE | RELEASED BY | DATE | SIZE | PART NO. |
|-----------|------|-------------|------|----------|----------|------|------------|----------|-------------|------|----------------------|------|--------------|------------|
| | | | | | SW | | ST | 11/18/11 | | | | | B | 00-4136-00 |
| REVISIONS | | | | | DRAWN BY | | CHECKED BY | | APPROVED BY | | RELEASED BY | | SCALE | |
| | | | | | CDS | | 11/18/11 | | ST | | 11/18/11 | | CDS | |
| | | | | | | | | | | | DO NOT SCALE DRAWING | | SHEET 1 of 1 | |

This drawing (or print) is the property of Tipper Tie, Apex NC and shall not be traced, photographed, photocopied or reproduced in any manner nor used for any purpose whatsoever except by written permission of Tipper Tie.

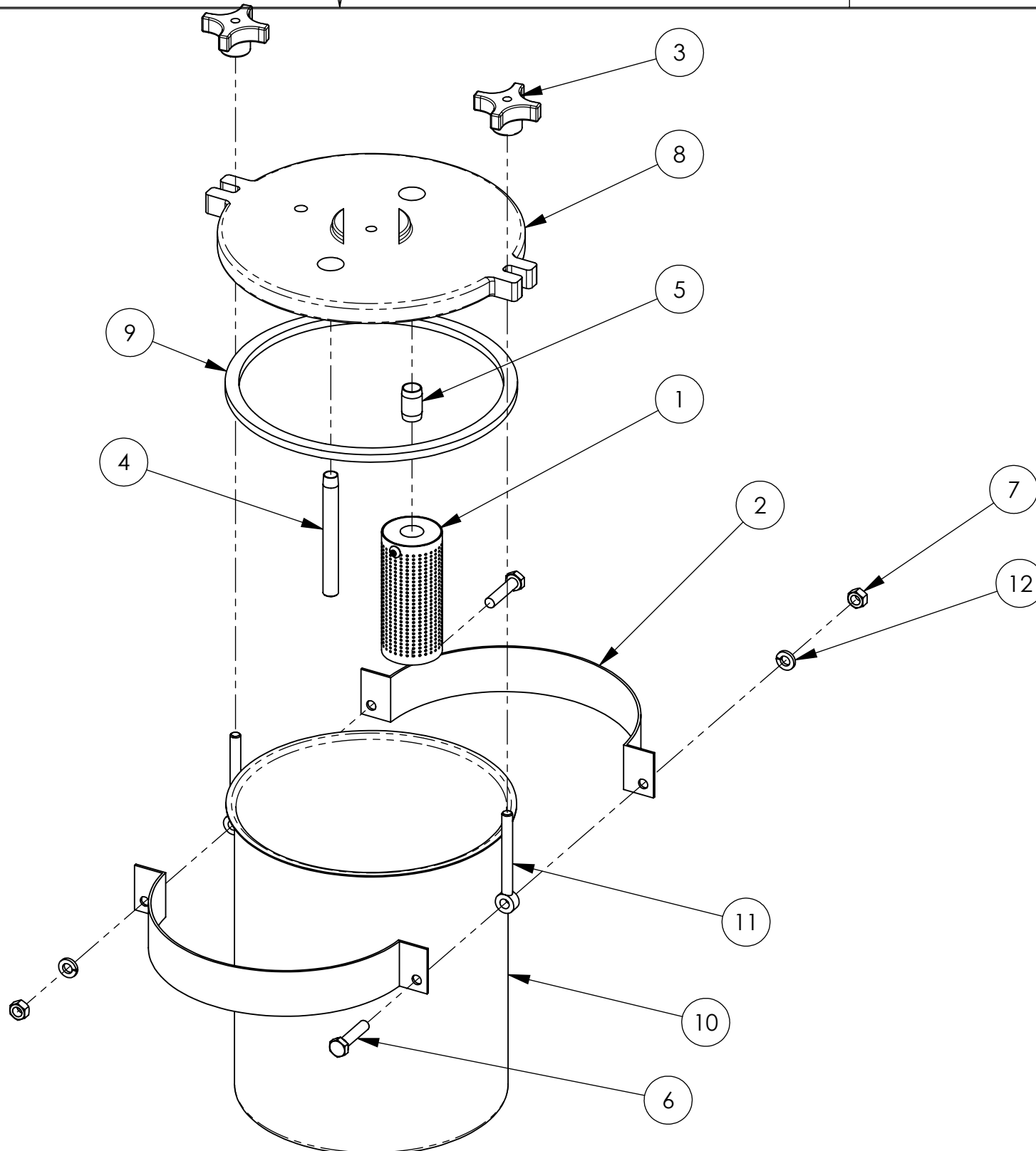
4

3

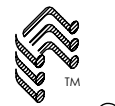
2

1

| ITEM NO. | PART NUMBER | DESCRIPTION | QTY. |
|----------|-------------|---------------------------------------|------|
| 1 | 00-0805 | SHUT-OFF VALVE ASSY | 1 |
| 2 | 10-2792 | BRACKET | 2 |
| 3 | 20-0178 | KNOB | 2 |
| 4 | 28-0502 | 3/8 X 4 LG PIPE NIPPLE FOR WASTE TANK | 1 |
| 5 | 28-9098 | 3/8 CLOSE NIPPLE BRASS | 1 |
| 6 | 29-9314 | 5/16-18 X 1-1/4 LG HH SST | 2 |
| 7 | 29-9425 | 5/16-18 HEX NUT SST | 2 |
| 8 | 32-0104 | WASTE TANK COVER | 1 |
| 9 | 40-0977 | GASKET QUAD-X,Q4444366Y | 1 |
| 10 | 99-0401 | TANK | 1 |
| 11 | 99-0905 | EYE BOLT | 2 |
| 12 | 99-9608 | 5/16 SPLIT LOCK WASHER SST | 2 |



| NO. | ZONE | DESCRIPTION | DATE | APPROVED |
|-----------|------|-------------|------|----------|
| 05 | | NO ECN DATA | | |
| REVISIONS | | | | |

SW

TIPPER TIE[®]
A DOVER INDUSTRIES COMPANY

CHECKED BY: ST DATE: 09/01/11
APPROVED BY: ST DATE: 09/01/11
RELEASED BY: CDS DATE: 09/01/11

DRAWN BY: CDS DATE: 09/01/11

WASTE TANK SUB-ASSY

SIZE: **B** PART NO.: **00-4153-05**

SCALE: 1:8 DO NOT SCALE DRAWING SHEET 1 of 1

This drawing (or print) is the property of Tipper Tie, Apex NC and shall not be traced, photographed, photocopied or reproduced in any manner nor used for any purpose whatsoever except by written permission of Tipper Tie.

USED ON
00-7983

43-1314 1 REQ'D.
OIL RESERVOIR

43-1302 1 REQ'D.
ADJUSTABLE SLEEVE

43-1303 1 REQ'D.
LOCK NUT

43-1316 1 REQ'D.
CONSTANT LEVEL OILER

43-1301 REF
COVER

43-1394 REF
CONNECTOR

43-1391 REF
COVER GASKET

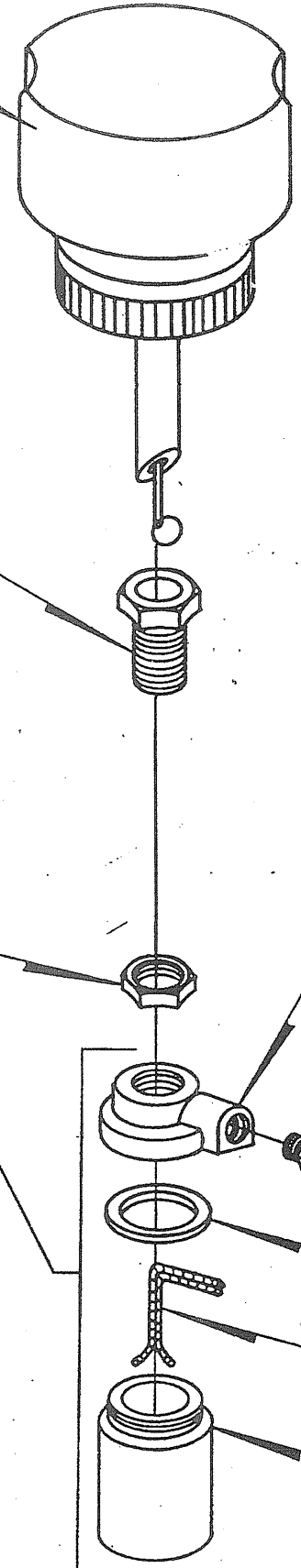
43-1392 REF
WICK

43-1393 REF
JAR

LUBRICATION UNIT
00-4527

3-13-87

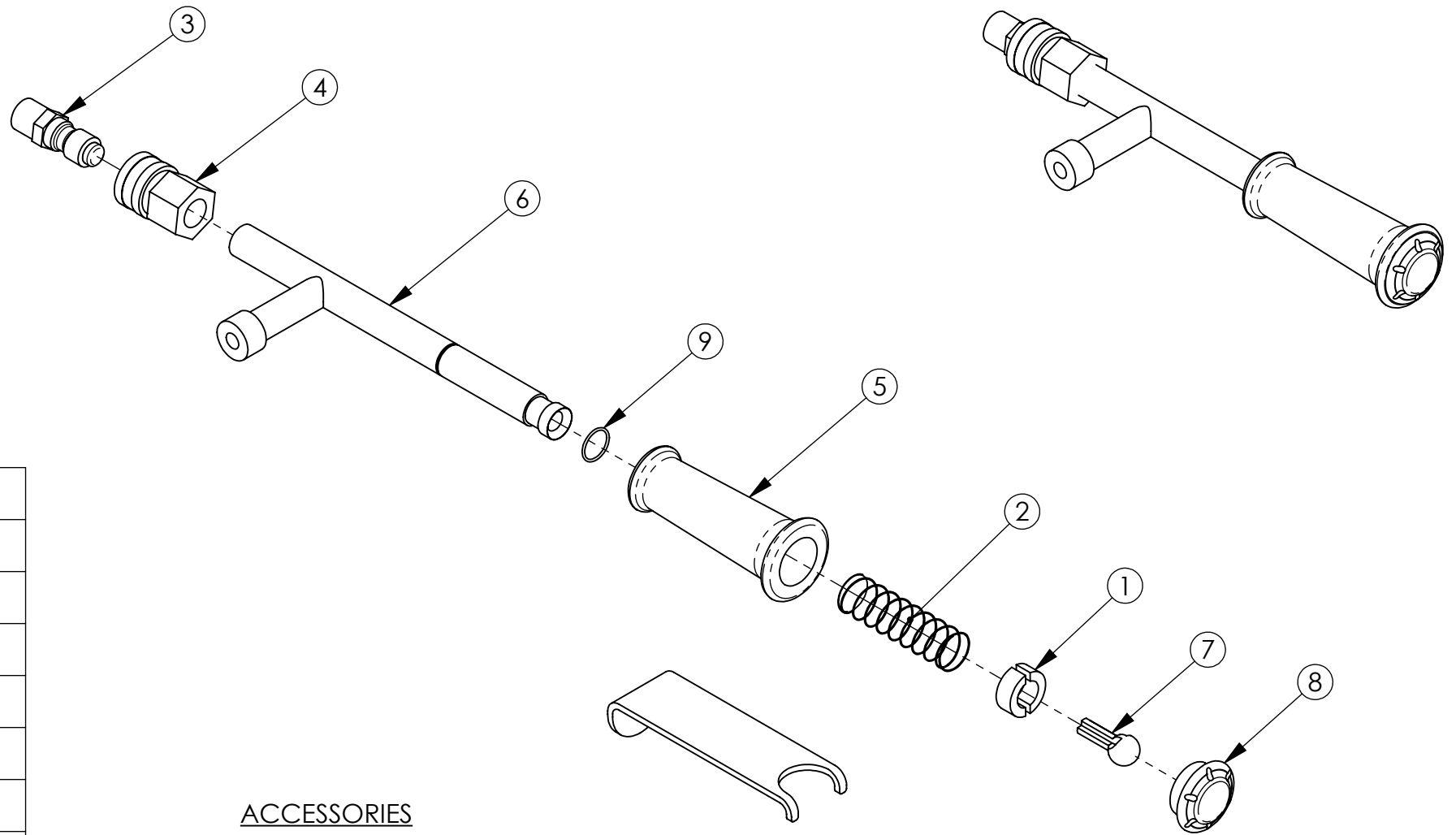
REV.



Manufacturer: CRYOVAC SEALED AIR
Part Number: 8065

Allow Substitutions? NO

*** ADDITIONAL COMMENTS OR REQUIREMENTS ***



| ITEM NO. | QTY | PART NUMBER | DESCRIPTION |
|----------|-----|-------------|-----------------------------|
| 1 | 1 | 16-1808 | COLLAR-SPCL SPLIT 51005 |
| 2 | 1 | 17-1807 | SPRING-CRYOVAC 51004 |
| 3 | 1 | 28-0811 | PLUG-MODIFIED HANSEN |
| 4 | 1 | 28-0812 | SOCKET-3/8 FEM THD SST |
| 5 | 1 | 28-1802 | NOZZLE GRIP |
| 6 | 1 | 28-1804 | GUIDE STEM |
| 7 | 1 | 28-1806 | PLUG |
| 8 | 1 | 28-1894 | NOZZLE TIP |
| 9 | 1 | 62-1800 | O-RING SPCL CRYOVAC 1543-26 |

ACCESSORIES

99-1821 BRUSH 1 REQ'D
99-1822 GREASE 1 REQ'D

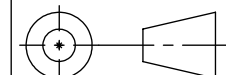
*KEY INCLUDED, ALSO AVAILABLE SEPARATELY: 28-1809

A SUBSTITUTE ITEM SHALL NOT BE USED WITHOUT PRIOR TESTING AND APPROVAL BY ENGINEERING

SOURCE CONTROL DRAWING

SHURVAC NOZZLE

| NAME OF VENDOR | | VENDORS ADDRESS | | VENDORS PART NO. | | |
|----------------|------|----------------------|----------|------------------|---|------------------|
| 03 | | SEE ECN 00-8065-03 | 04/20/23 | CJS | CHECKED BY DATE 04/05/77 APPROVED BY DATE 04/05/77 RELEASED BY DATE 04/05/77 | |
| 02 | | SEE ECN 00-8065-02 | 02/17/21 | JAN | | |
| 01 | | SEE ECN 00-8065-01 | | | | |
| NO. | ZONE | DESCRIPTION | DATE | APPROVED | DRAWN BY DATE | RELEASED BY DATE |
| REVISIONS | | | | | 04/05/77 | 04/05/77 |
| SCALE 1:3 | | DO NOT SCALE DRAWING | | SHEET 1 of 1 | | |

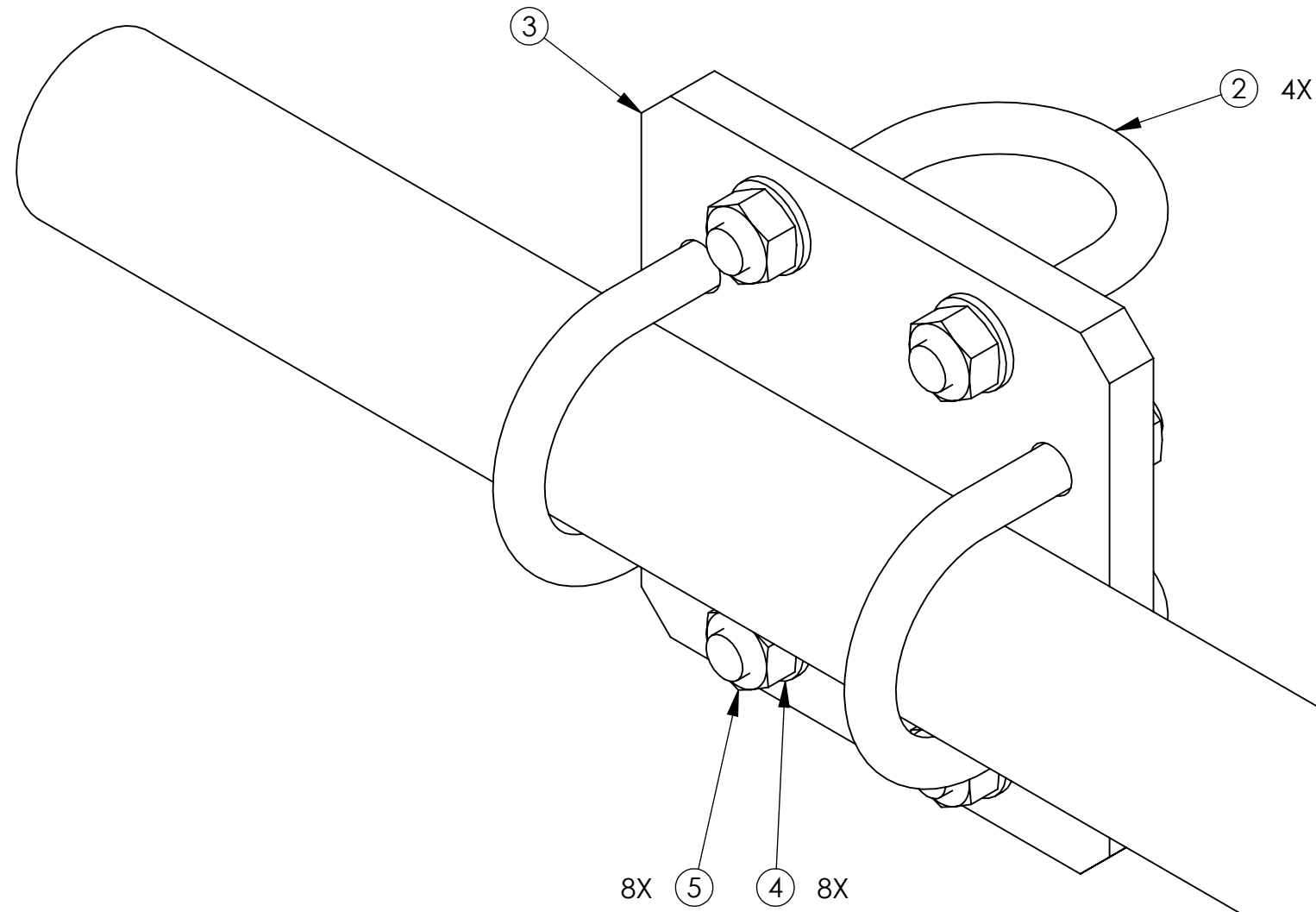


PART NO. 00-8065-03

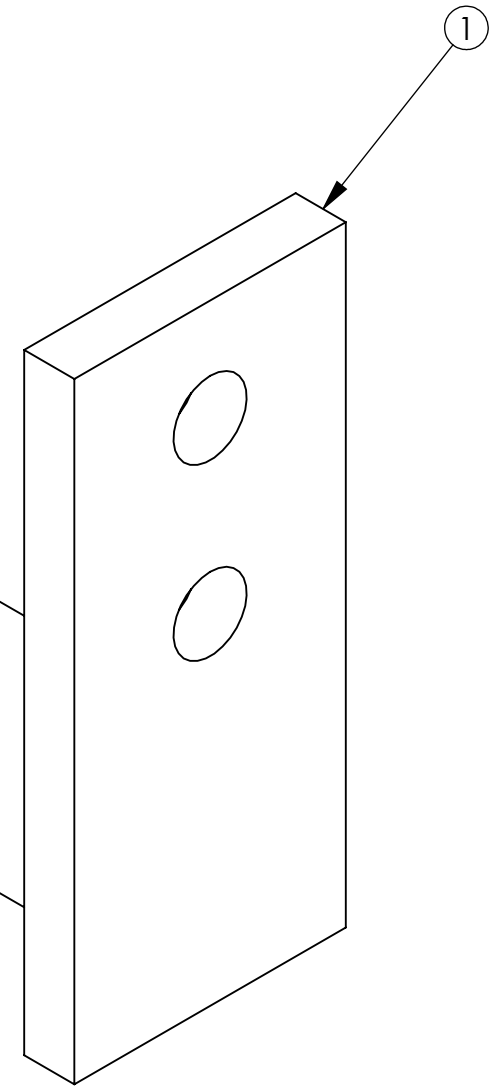
4 3 2 1

D
C
B
A

D
C
B
A



| ITEM NO. | QTY | PART NUMBER | DESCRIPTION |
|----------|-----|-------------|------------------------|
| 1 | 1 | 10-8972 | MOUNTING STUB |
| 2 | 4 | 29-1542 | M8 X 54LG X 44W U-BOLT |
| 3 | 1 | 32-3840 | CLIPPER MOUNTING PLATE |
| 4 | 8 | 99-1184 | 8MM ID FLAT WASHER SST |
| 5 | 8 | 29-1129 | M8 HEX NUT SST |



| | | | | | | | | | |
|-----------|------|--------------------|----------|------------------------------------|--|-------------------------------------|----------------------|--|-----------------|
| | | | | | | CHECKED BY DATE LOWDER 06/06/18 | | <h2 style="text-align: center;">PIPE ADAPTER ASSEMBLY</h2> | |
| | | | | | | APPROVED BY DATE GRIGGS 06/06/18 | | | |
| | | | | DRAWN BY DATE S.GRIGGS 06/06/18 | | RELEASED BY DATE GRIGGS 06/06/18 | | SIZE B | |
| REVISIONS | | | | | | SCALE 1:1 | | PART NO. 00-5321-02 | |
| NO. | ZONE | DESCRIPTION | DATE | APPROVED | | | DO NOT SCALE DRAWING | | SHEET 1 of 1 |
| 02 | | SEE ECN 00-5321-02 | 05/08/23 | CJS | | | | | |
| 01 | | SEE ECN 00-5321-01 | 02/18/21 | JAN | | | | | |

CONFIDENTIAL AND PROPRIETARY - PROPERTY OF JBT CORPORATION AND/OR ITS AFFILIATES ("JBT"). Information in this document is confidential and proprietary and may not be reproduced in any form, distributed or divulged without the written permission of JBT

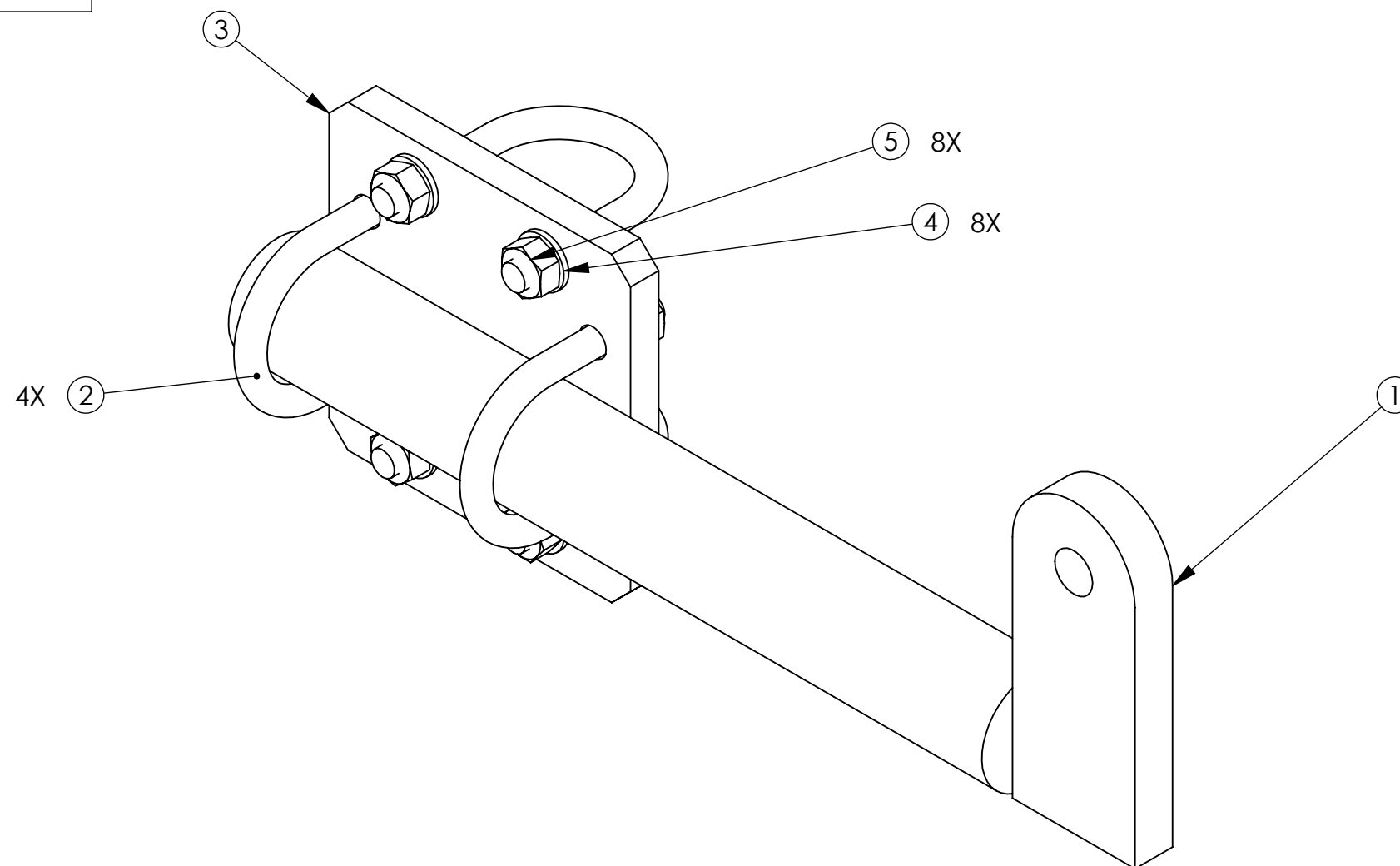
4

3

2

1

| ITEM NO. | QTY | PART NUMBER | DESCRIPTION |
|----------|-----|-------------|------------------------|
| 1 | 1 | 10-6662 | MOUNTING STUB |
| 2 | 4 | 29-1542 | M8 X 54LG X 44W U-BOLT |
| 3 | 1 | 32-3840 | CLIPPER MOUNTING PLATE |
| 4 | 8 | 99-1184 | 8MM ID FLAT WASHER SST |
| 5 | 8 | 29-1129 | M8 HEX NUT SST |



| NO. | ZONE | DESCRIPTION | DATE | APPROVED |
|-----------|------|--------------------|----------|----------|
| 01 | | SEE ECN 00-5399-01 | 05/08/23 | CJS |
| REVISIONS | | | | |



CHECKED BY DATE
LOWDER 09/18/18

APPROVED BY DATE
GRIGGS 09/18/18

DRAWN BY DATE
S.GRIGGS 09/18/18

RELEASED BY DATE
GRIGGS 09/18/18

PIPE ADAPTER ASSEMBLY

SIZE **B** PART NO. **00-5399-01**

SCALE 1:1.5 DO NOT SCALE DRAWING SHEET 1 of 1

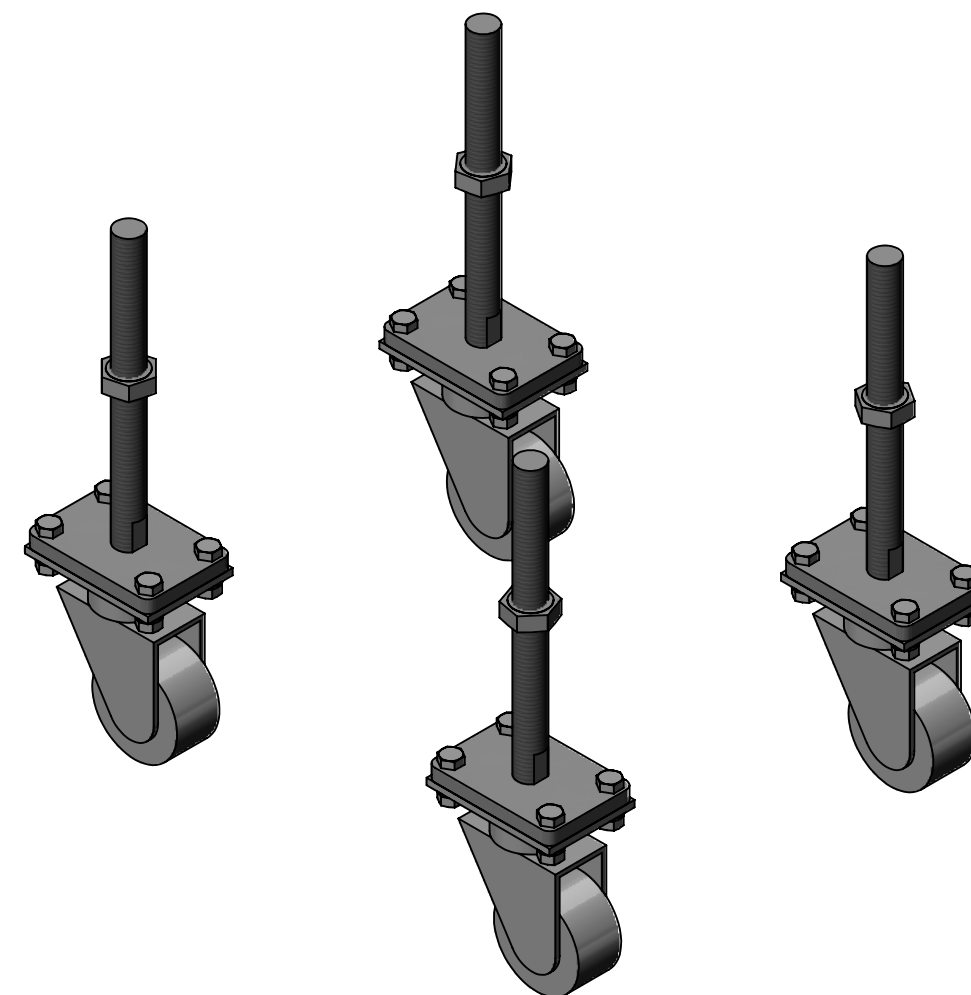
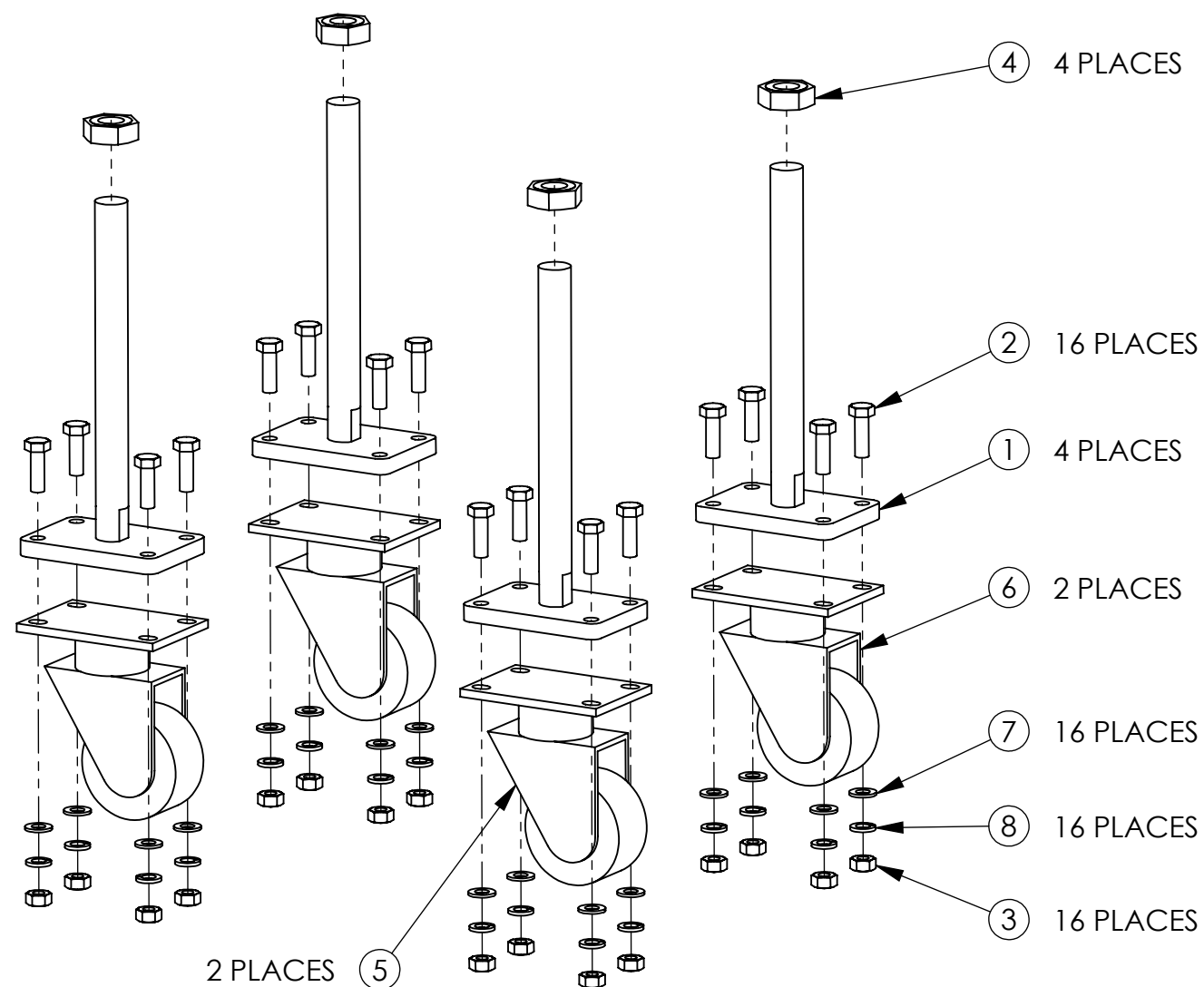
4

3

2

1

| ITEM NO. | QTY | PART NUMBER | DESCRIPTION |
|----------|-----|-------------|----------------------------------|
| 1 | 4 | 10-7804 | CASTER MOUNT - 3/4 X 8 STUD |
| 2 | 16 | 29-0689 | M8 X 25 HEX HEAD SST DIN 933 |
| 3 | 16 | 29-1129 | M8 HEX NUT SST |
| 4 | 4 | 29-9628 | 3/4-10 HEX JAM NUT SST |
| 5 | 2 | 99-0283 | CASTER 2 1/2 DIA, SWIVEL W/BRAKE |
| 6 | 2 | 99-0284 | CASTER 2 1/2 DIA, RIGID |
| 7 | 16 | 99-1184 | 8MM ID FLAT WASHER SST |
| 8 | 16 | 99-1246 | 8MM ID LOCKWASHER SST |



| NO. | ZONE | DESCRIPTION | DATE | APPROVED |
|-----------|------|-------------|------|----------|
| REVISIONS | | | | |



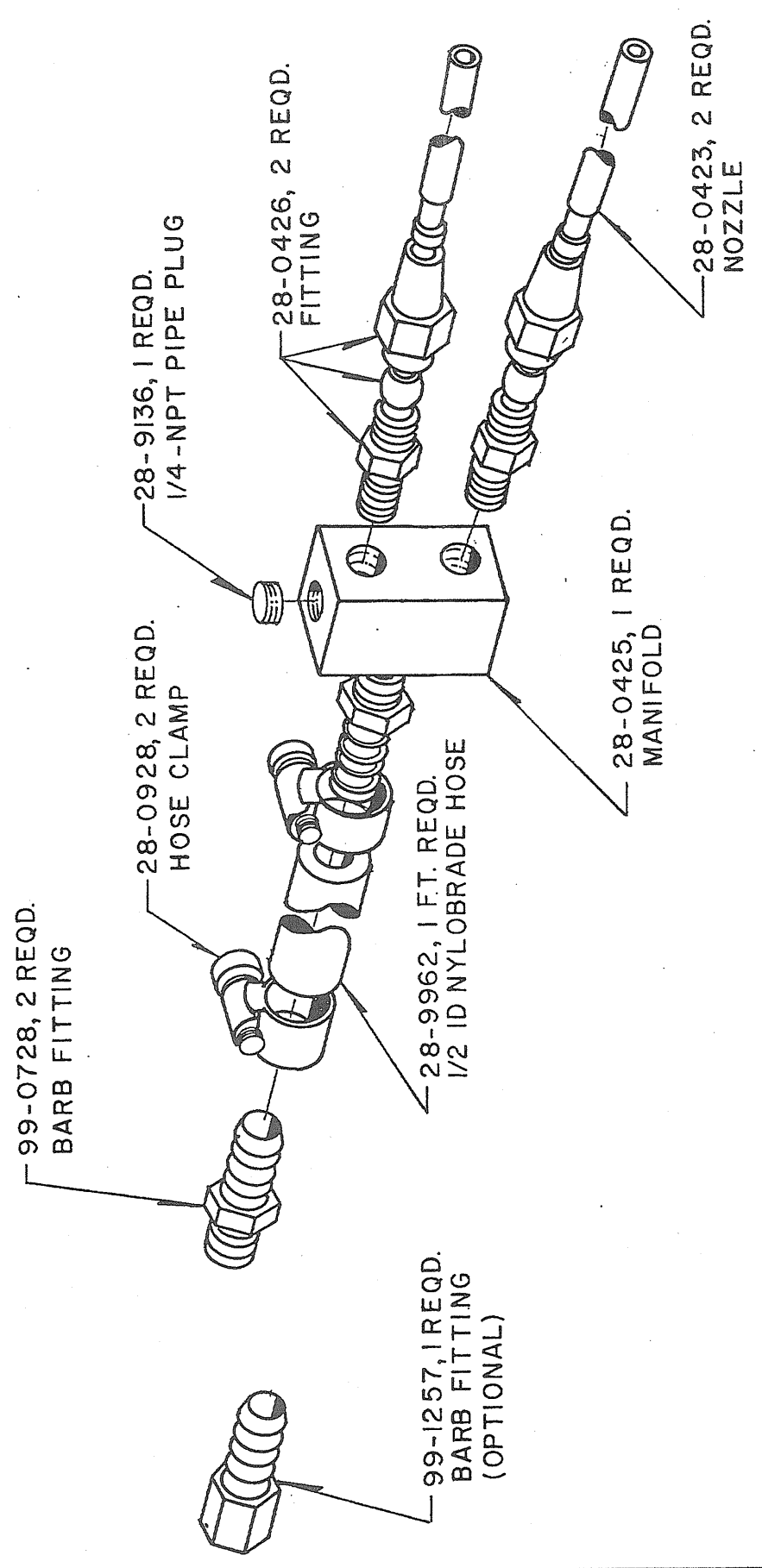
CHECKED BY DATE
S.GRIGGS 2/3/21
APPROVED BY DATE
S.GRIGGS 2/3/21
RELEASED BY DATE
J.NICHOLS 2/3/21

CASTER KIT - TTVAC

SIZE **B** PART NO. **00-7596-00**
 SCALE 1:4 DO NOT SCALE DRAWING SHEET 1 of 1

6-88-11-1003

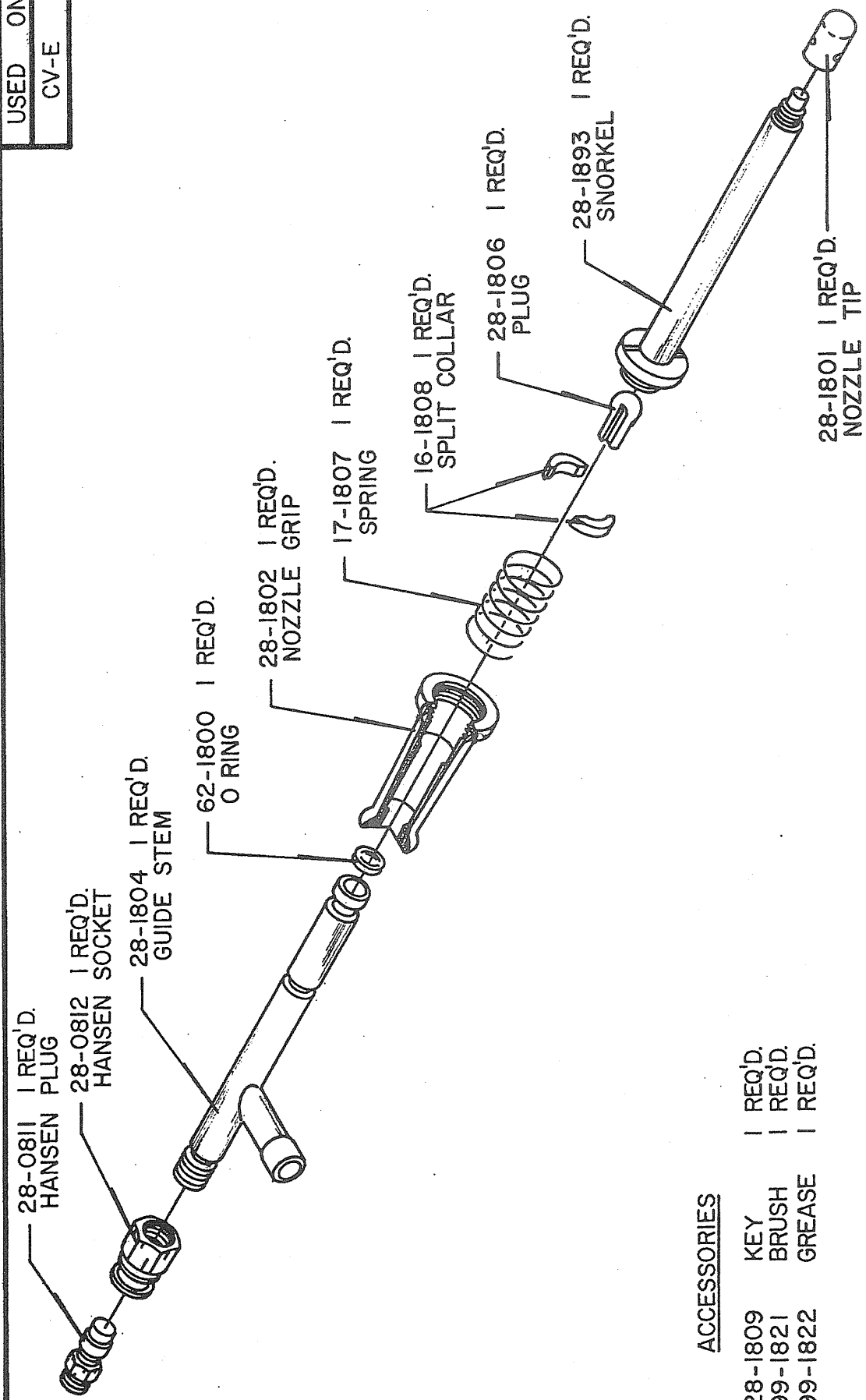
USED ON
CV-E



REV. 1

SPLIT NOZZLE ASSEMBLY
00-0424 11-8-77

USED ON
CV-E



ACCESSORIES

- 28-1809 KEY 1 REQ'D.
- 99-1821 BRUSH 1 REQ'D.
- 99-1822 GREASE 1 REQ'D.

REV. 1

VACUUM NOZZLE ASSEMBLY
00-8066 4-5-77

4

3

2

1

D

D

C

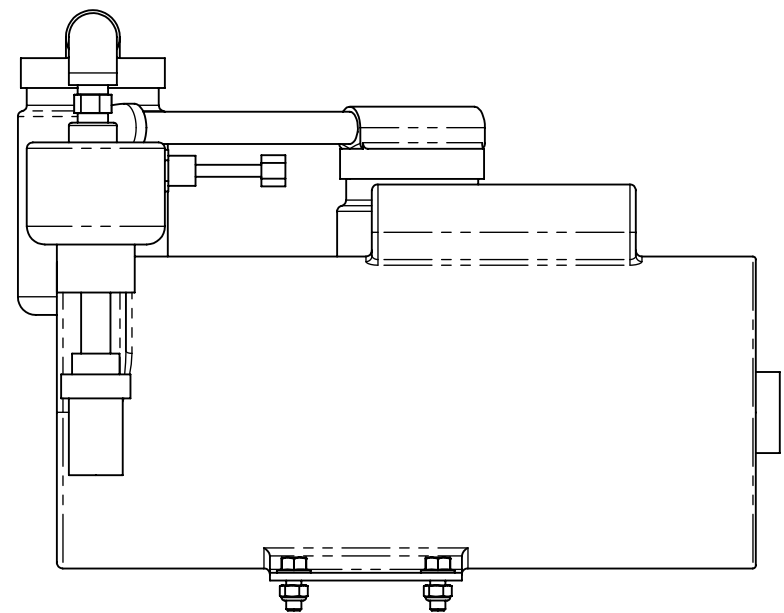
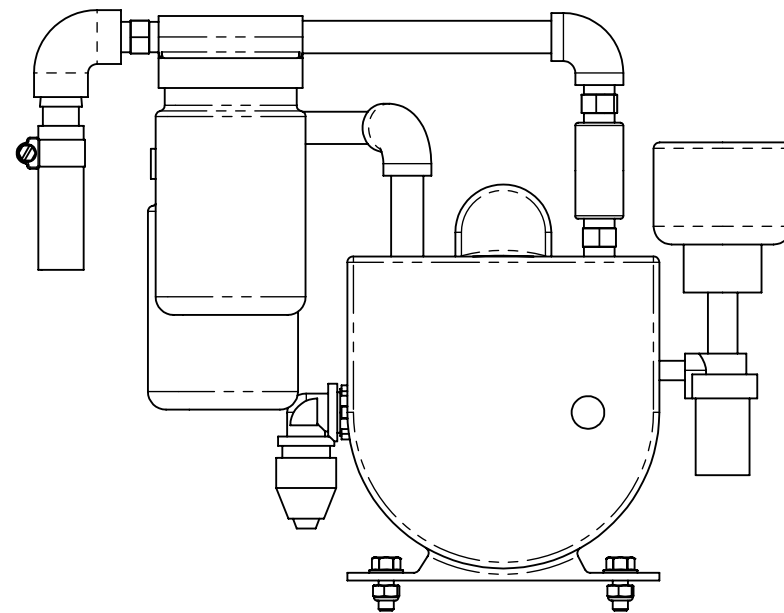
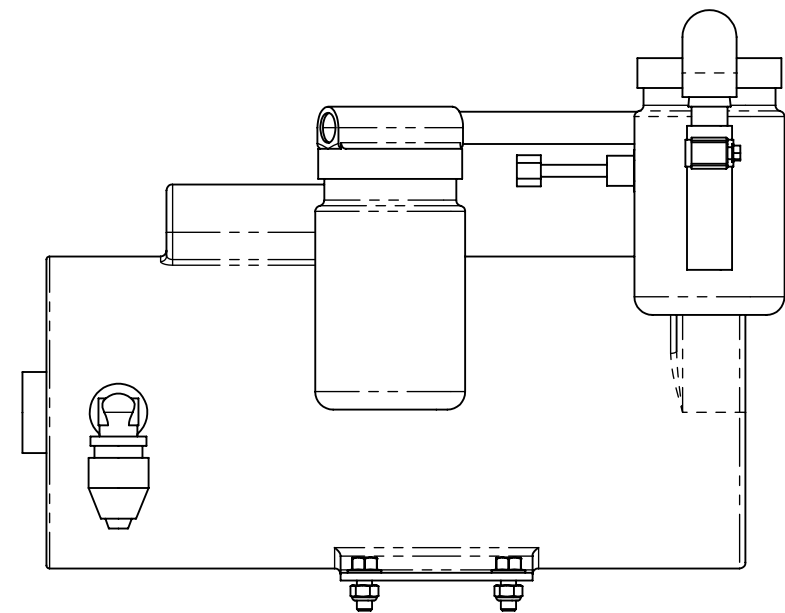
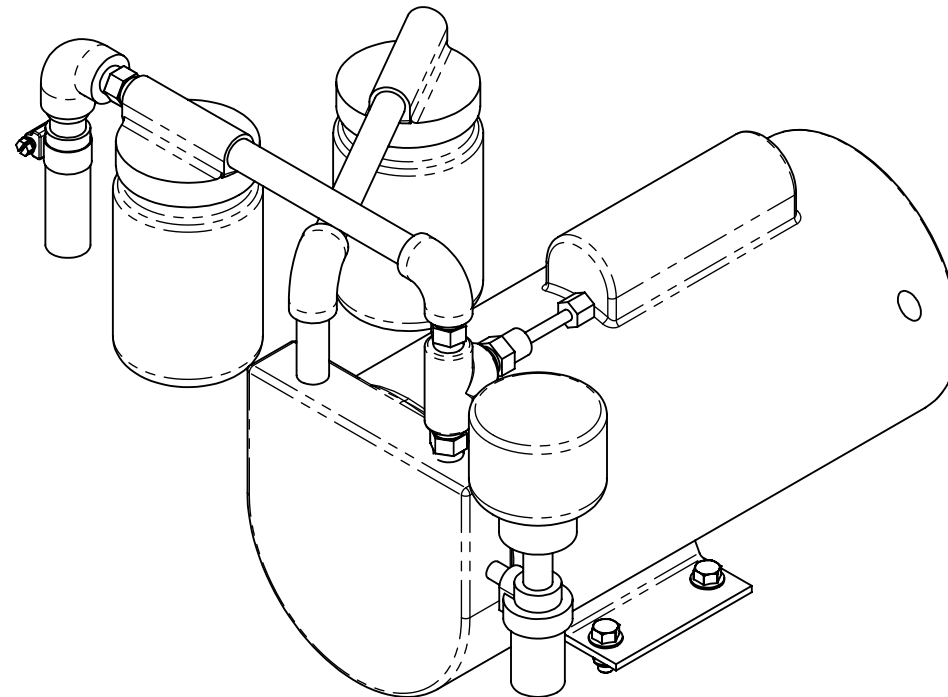
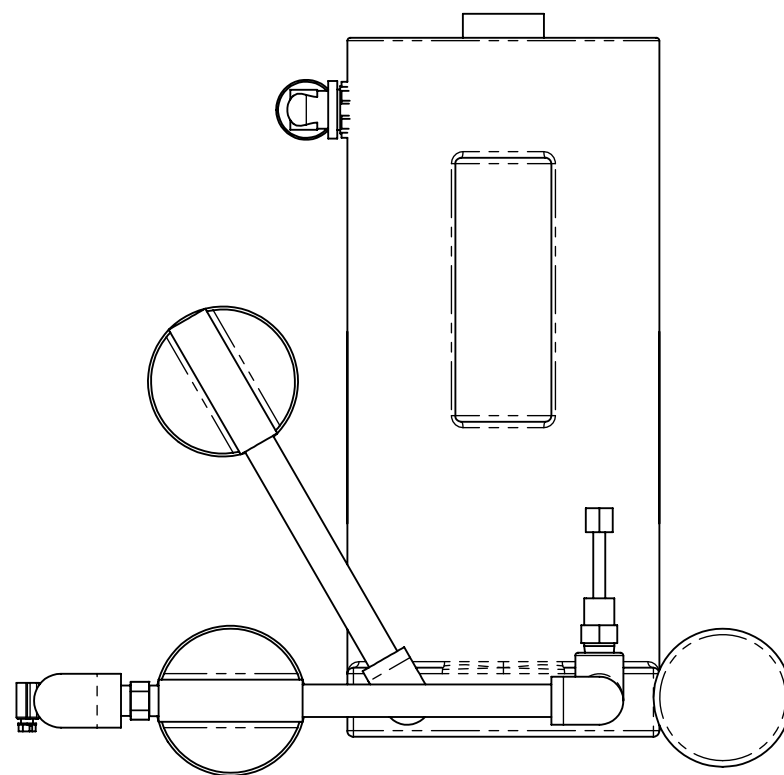
C

B

B

A

A



| | | | | |
|----|--|--------------------|----------|-----|
| 04 | | SEE ECN 00-7782-04 | 10/13/23 | CJS |
| 03 | | SEE ECN 00-7782-03 | 08-10-23 | SDG |
| 02 | | SEE ECN 00-7782-02 | 04/27/21 | JAN |
| 01 | | SEE ECN 00-7782-01 | 04/22/21 | JAN |

REVISIONS

| NO. | ZONE | DESCRIPTION | DATE | APPROVED |
|-----|------|-------------|------|----------|
|-----|------|-------------|------|----------|



DRAWN BY DATE
J.NICHOLS 2/3/21

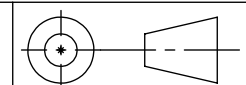
CHECKED BY DATE
S.GRIGGS 2/3/21

APPROVED BY DATE
S.GRIGGS 2/3/21

RELEASED BY DATE
J.NICHOLS 2/3/21

3/4 HP 100V CLASS VAC PUMP ASSY

SIZE
B



PART NO.
00-7782-04

SCALE 1:4

DO NOT SCALE DRAWING

SHEET 1 of 2

4

3

2

1

D

C

B

A

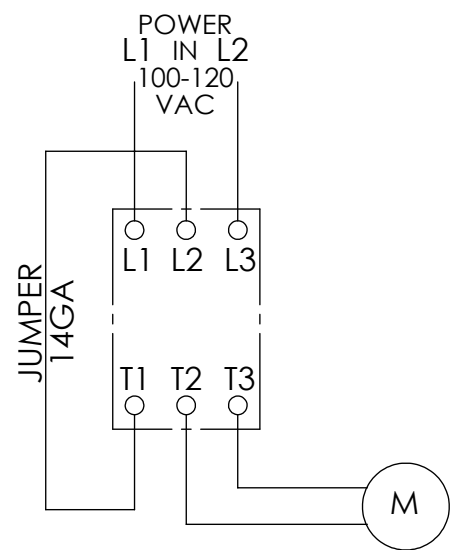
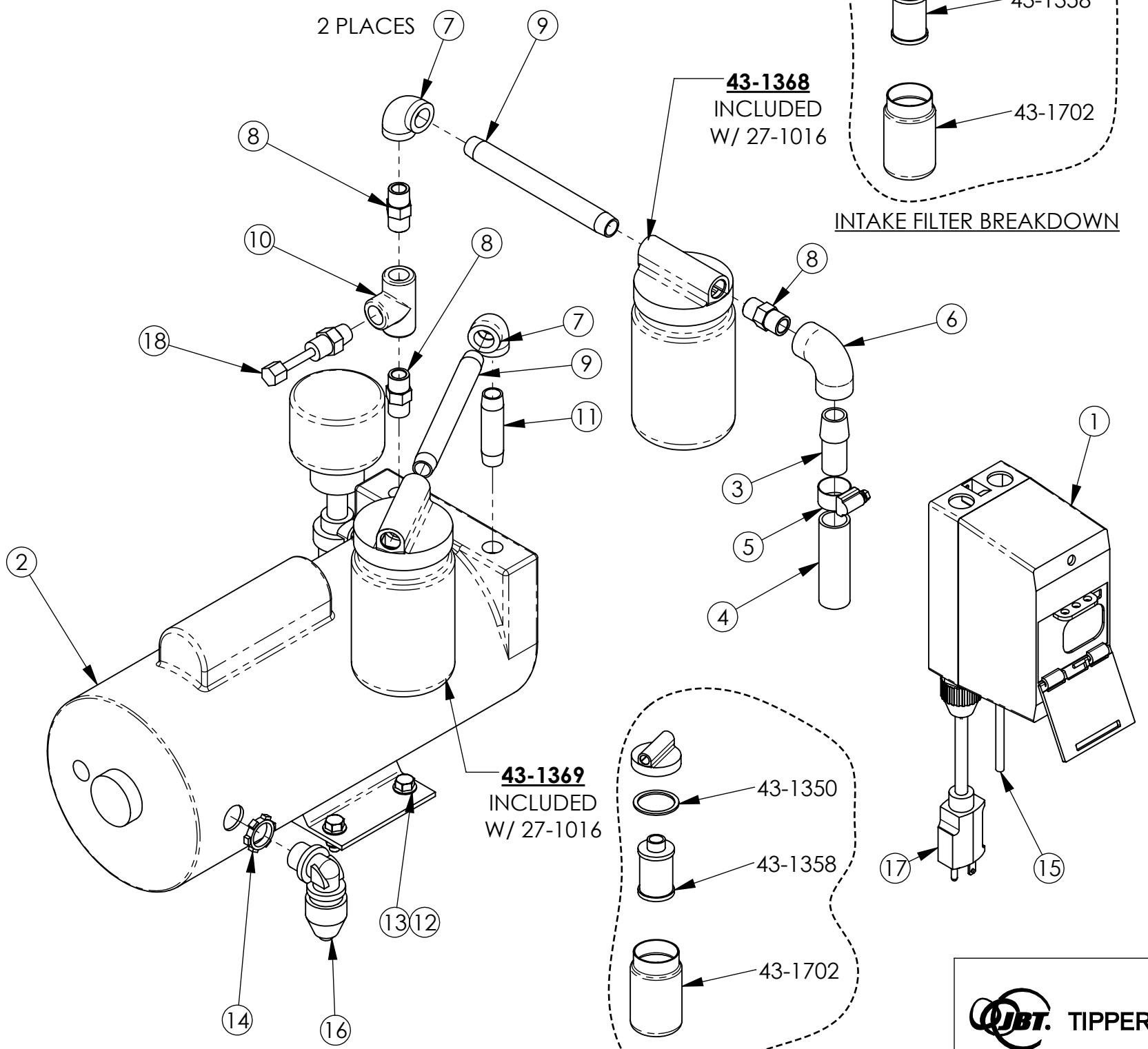
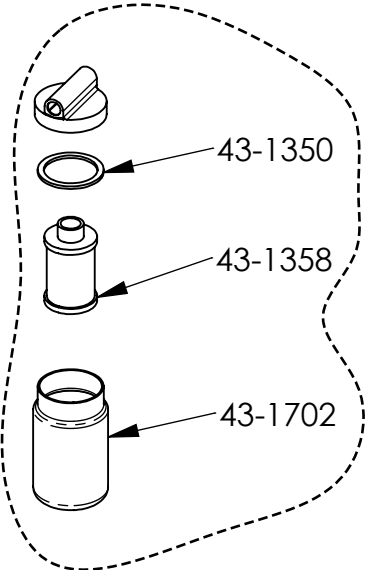
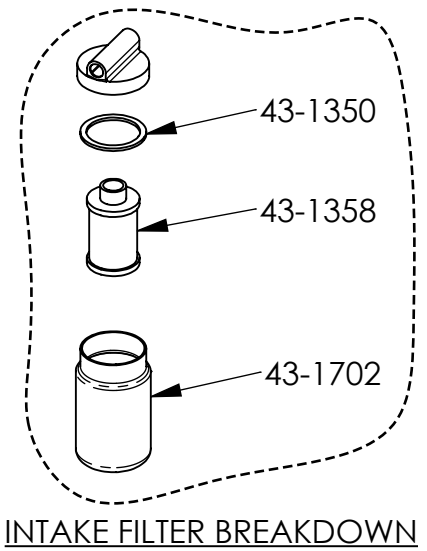
D

C

B

A

| ITEM NO. | QTY. | PART NUMBER | DESCRIPTION |
|----------|------|-------------|---------------------------------|
| 1 | 1 | 00-3506 | ON/OFF SW ASSY EATON 8-12 A |
| 2 | 1 | 27-1016 | PUMP-VACUUM 3/4 HP 8.0 CFM |
| 3 | 1 | 28-0399 | 1/2NPTHALFNIPPLESST MOD28-1234 |
| 4 | 1 | 28-0521 | 3/4 IN VACUUM HOSE |
| 5 | 1 | 28-0552 | HOSE CLAMP 6812 SS |
| 6 | 1 | 28-9085 | 3/8 X 1/2 ELBOW GALV |
| 7 | 2 | 28-9089 | 3/8 ELBOW GALV |
| 8 | 3 | 28-9093 | 3/8 HEX NIPPLE BRASS |
| 9 | 2 | 28-9128 | 3/8 X 6 NIPPLE SST |
| 10 | 1 | 28-9149 | 3/8 TEE GALV |
| 11 | 1 | 28-9467 | 3/8 X 2-1/2 NIPPLE SST |
| 12 | 4 | 29-0178 | M8 ELASTIC LOCKNUT SST |
| 13 | 4 | 29-1711 | M8 X 20 MM LG HFLG SST DIN 6921 |
| 14 | 1 | 30-0031 | LOCKNUT-SEALING .50 CONDUIT |
| 15 | 1 | 30-0063 | CA-SUTO-16/3 AWG YELLOW |
| 16 | 1 | 30-0242 | CONN-CORDGRIP 90DEG1/2 .25/.40 |
| 17 | 1 | 30-0246 | CORD-PWR A 14/3 125V 15A 9FT |
| 18 | 1 | 43-1389 | VAC. RELIEF VLV #AA840 |



| | | | |
|-----------------------------------|--------------------------------------|--|--|
| | CHECKED BY DATE S.GRIGGS 2/3/21 | 3/4 HP 100V CLASS VAC PUMP ASSY | |
| | APPROVED BY DATE S.GRIGGS 2/3/21 | | |
| DRAWN BY DATE J.NICHOLS 2/3/21 | RELEASED BY DATE J.NICHOLS 2/3/21 | SIZE B SCALE 1:8 | PART NO. 00-7782-04 DO NOT SCALE DRAWING |
| | | SHEET 2 of 2 | |

CONFIDENTIAL AND PROPRIETARY - PROPERTY OF JBT CORPORATION AND/OR ITS AFFILIATES ("JBT"). Information in this document is confidential and proprietary and may not be reproduced in any form, distributed or divulged without the written permission of JBT

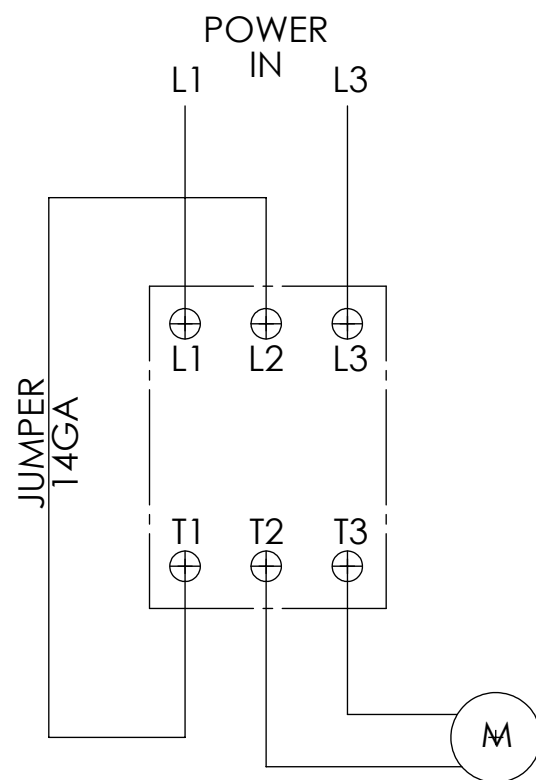
4

3

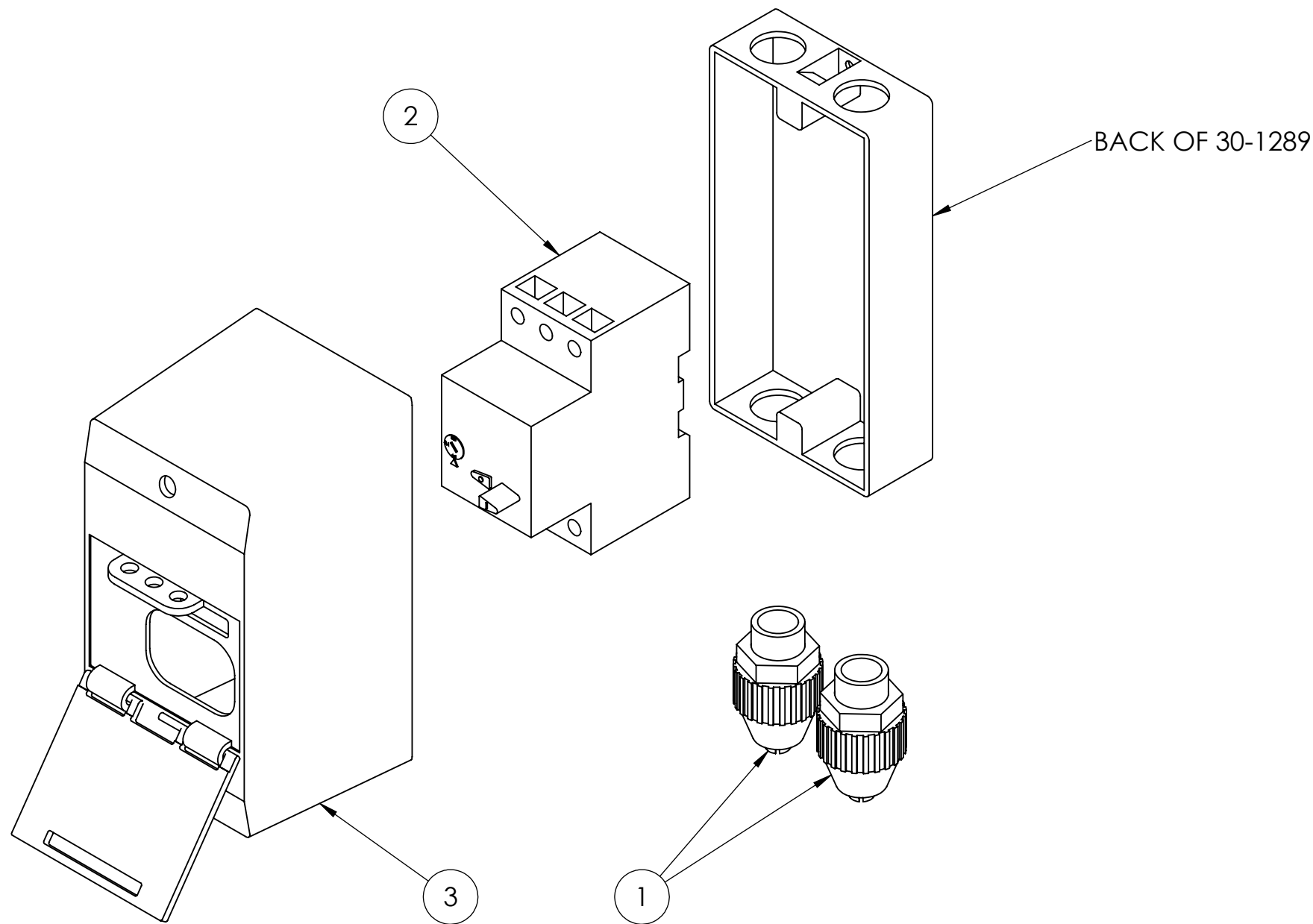
2

1

| ITEM NO. | PART NUMBER | DESCRIPTION | QTY. |
|----------|-------------|---------------------------------|------|
| 1 | 30-0009 | CONN-FLEX CORD STRAIGHT .50 HUB | 2 |
| 2 | 30-1288 | EATON MOTOR STARTER 8-12 AMP | 1 |
| 3 | 30-1289 | EATON PB ENCLOSURE | 1 |



SWITCH WIRING



| NO. | ZONE | DESCRIPTION | DATE | APPROVED |
|-----------|------|--------------------|----------|----------|
| 01 | | SEE ECN 00-3506-01 | 09/07/11 | ST |
| REVISIONS | | | | |

SW

TIPPER TIE[®]

A DOVER INDUSTRIES COMPANY

DRAWN BY DATE
CDS 03/24/10

CHECKED BY DATE
MP 03/24/10

APPROVED BY DATE
MP 03/24/10

RELEASED BY DATE
CDS 03/24/10

ON/OFF SWITCH ASSY. EATON 8-12 A

SIZE **B**

PART NO. **00-3506-01**

SCALE 1:5

DO NOT SCALE DRAWING

SHEET 1 of 1

4

3

2

1

D

D

C

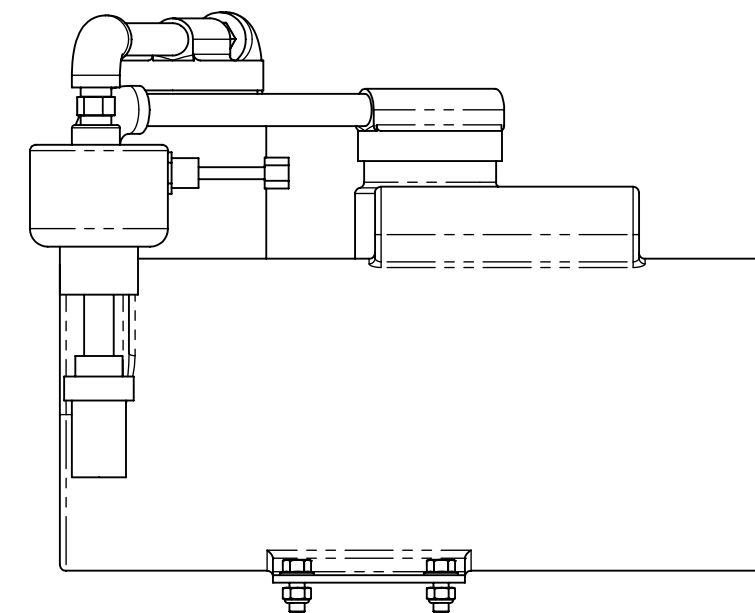
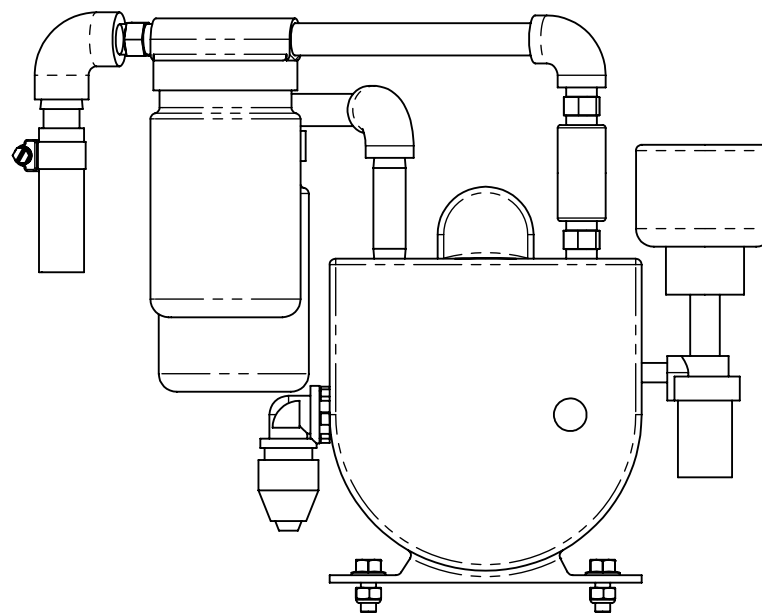
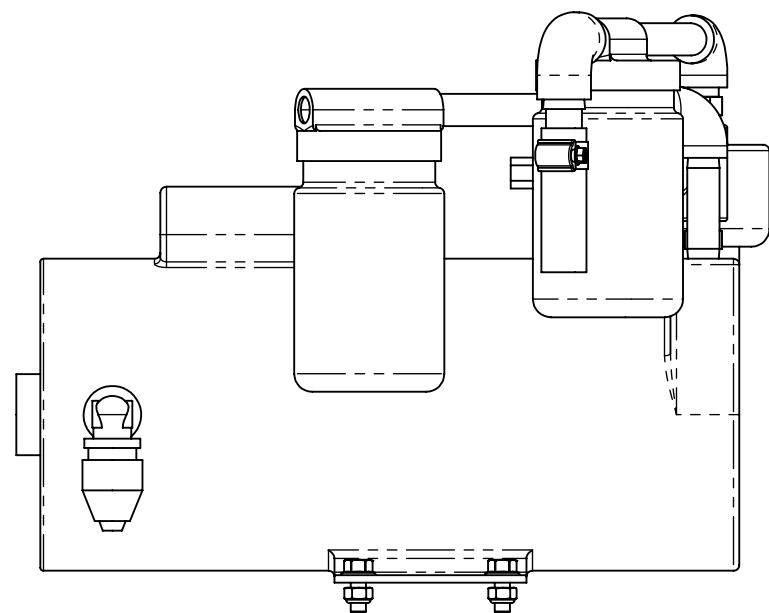
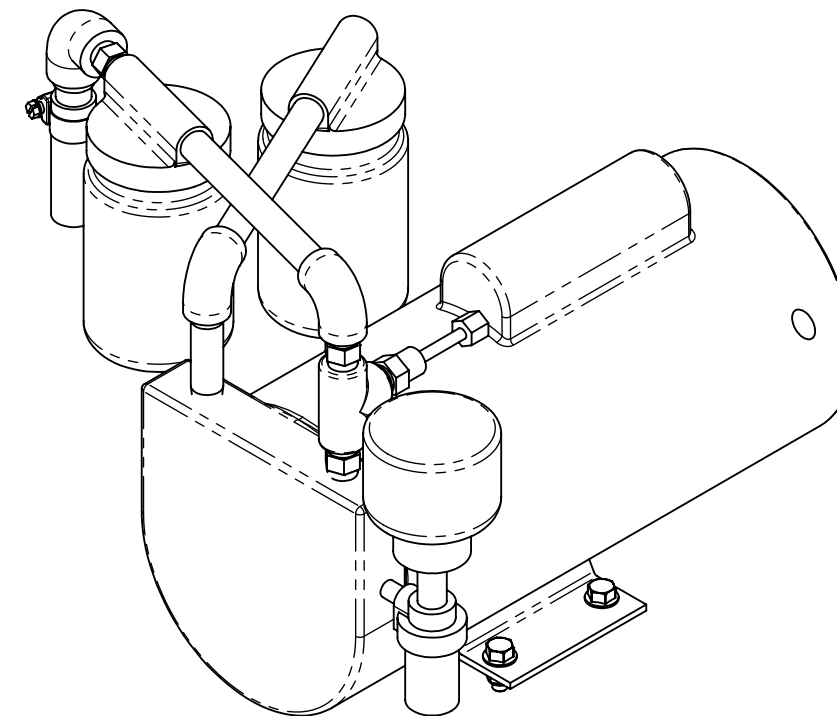
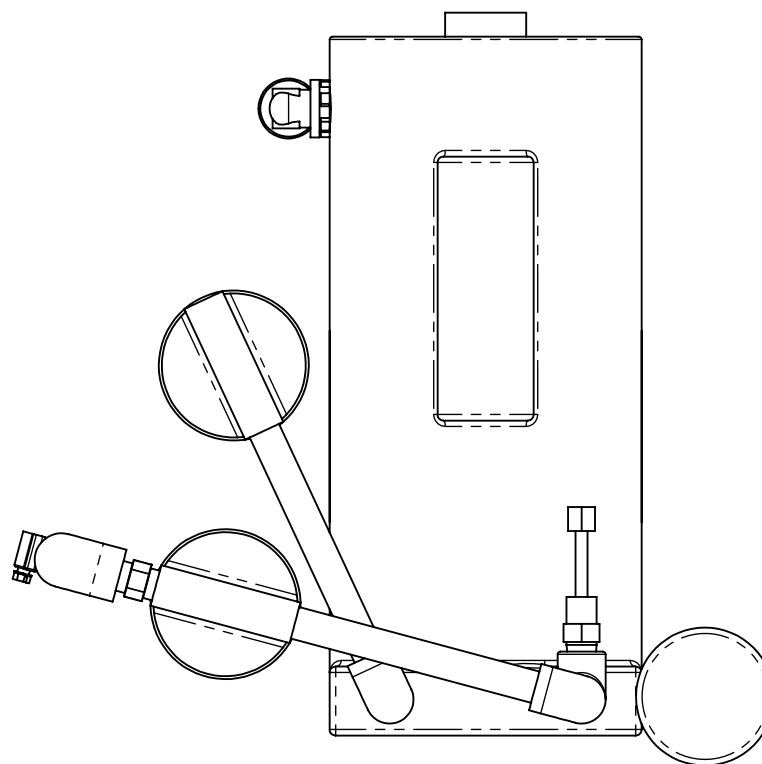
C

B

B

A

A



| NO. | ZONE | DESCRIPTION | DATE | APPROVED |
|-----------|------|--------------------|----------|----------|
| 02 | | SEE ECN 00-7783-02 | 10/13/23 | CJS |
| 01 | | SEE ECN 00-7783-01 | 08-10-23 | SDG |
| REVISIONS | | | | |



DRAWN BY DATE
J.NICHOLS 2/3/21

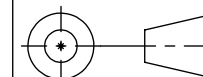
CHECKED BY DATE
S.GRIGGS 2/3/21

APPROVED BY DATE
S.GRIGGS 2/3/21

RELEASED BY DATE
J.NICHOLS 2/3/21

3/4 HP 200V CLASS VAC PUMP ASY

SIZE
B



PART NO.
00-7783-02

SCALE 1:4

DO NOT SCALE DRAWING

SHEET 1 of 2

4

3

2

1

D

C

B

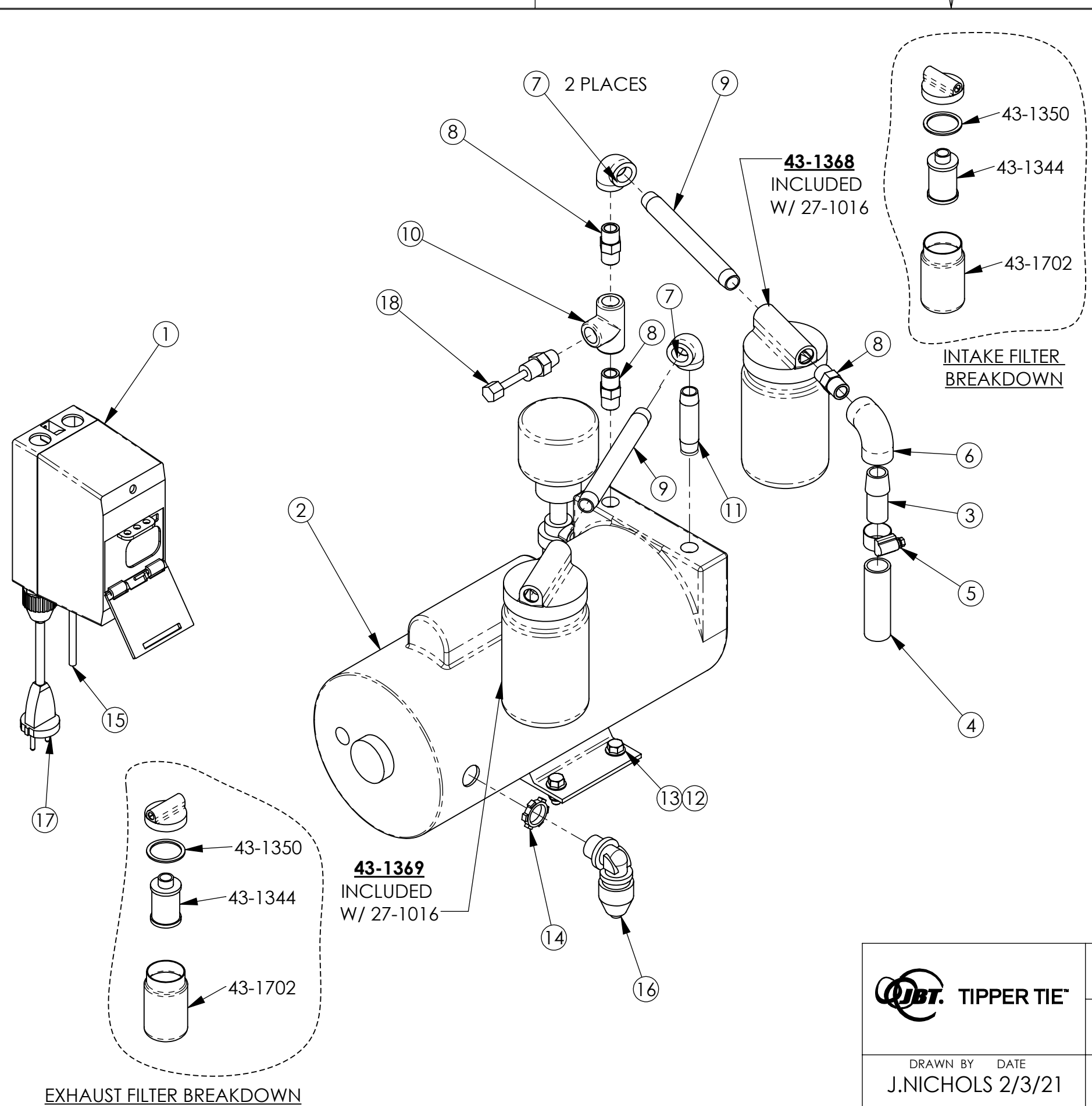
A

D

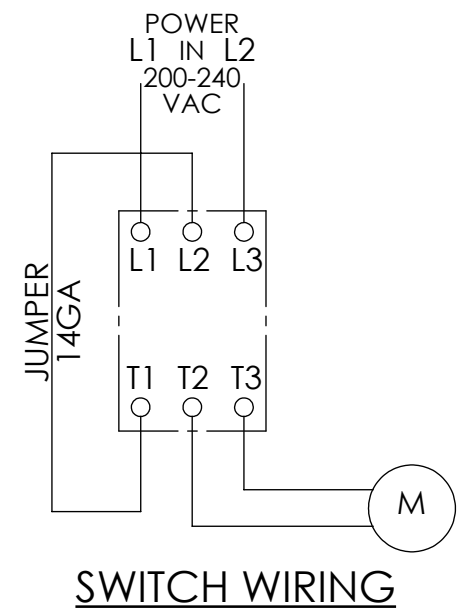
C

B

A



| ITEM NO. | QTY. | PART NUMBER | DESCRIPTION |
|----------|------|-------------|---------------------------------|
| 1 | 1 | 00-3505 | ON/OFF SW ASSY EATON 4-6.3 A |
| 2 | 1 | 27-1016 | PUMP-VACUUM 3/4 HP 8.0 CFM |
| 3 | 1 | 28-0399 | 1/2NPTHALFNIPPLESST MOD28-1234 |
| 4 | 1 | 28-0521 | 3/4 IN VACUUM HOSE |
| 5 | 1 | 28-0552 | HOSE CLAMP 6812 SS |
| 6 | 1 | 28-9085 | 3/8 X 1/2 ELBOW GALV |
| 7 | 2 | 28-9089 | 3/8 ELBOW GALV |
| 8 | 3 | 28-9093 | 3/8 HEX NIPPLE BRASS |
| 9 | 2 | 28-9128 | 3/8 X 6 NIPPLE SST |
| 10 | 1 | 28-9149 | 3/8 TEE GALV |
| 11 | 1 | 28-9467 | 3/8 X 2-1/2 NIPPLE SST |
| 12 | 4 | 29-0178 | M8 ELASTIC LOCKNUT SST |
| 13 | 4 | 29-1711 | M8 X 20 MM LG HFLG SST DIN 6921 |
| 14 | 1 | 30-0031 | LOCKNUT-SEALING .50 CONDUIT |
| 15 | 1 | 30-0063 | CA-SUTO-16/3 AWG YELLOW |
| 16 | 1 | 30-0242 | CONN-CORDGRIP 90DEG 1/2 .25/.40 |
| 17 | 1 | 30-0356 | CORD INTL PWRPLY 3COND UNSHLD |
| 18 | 1 | 43-1389 | VAC. RELIEF VLV #AA840 |



| | | | | |
|-----------------------------------|--------------------------------------|---------------------------------------|----------------------|-------------------------------|
| | CHECKED BY DATE S.GRIGGS 2/3/21 | 3/4 HP 200V CLASS VAC PUMP ASY | | |
| | APPROVED BY DATE S.GRIGGS 2/3/21 | | | |
| DRAWN BY DATE J.NICHOLS 2/3/21 | RELEASED BY DATE J.NICHOLS 2/3/21 | SIZE B | | PART NO. 00-7783-02 |
| | | SCALE 1:8 | DO NOT SCALE DRAWING | SHEET 2 of 2 |

CONFIDENTIAL AND PROPRIETARY - PROPERTY OF JBT CORPORATION AND/OR ITS AFFILIATES ("JBT"). Information in this document is confidential and proprietary and may not be reproduced in any form, distributed or divulged without the written permission of JBT

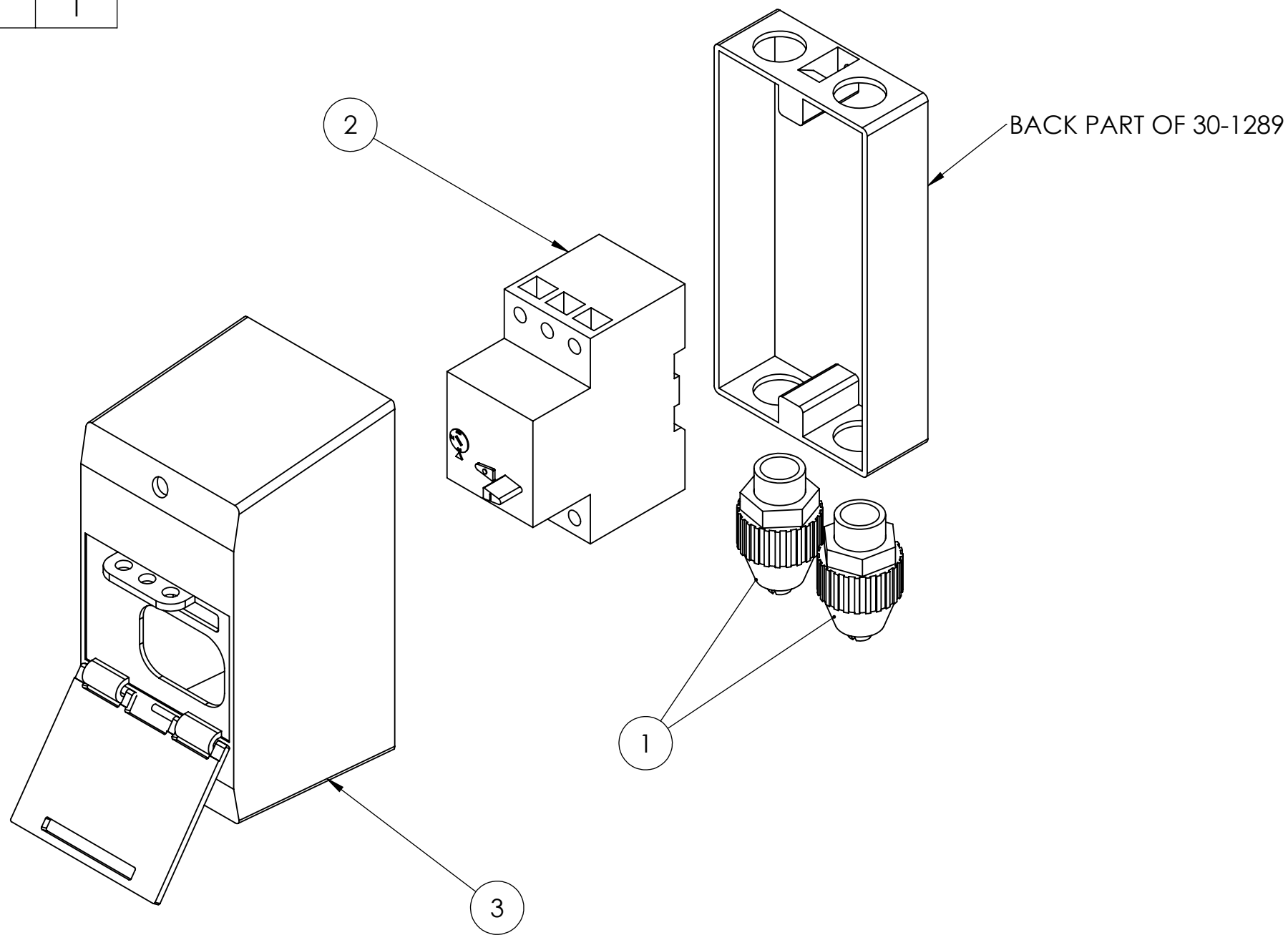
4

3

2

1

| ITEM NO. | PART NUMBER | DESCRIPTION | QTY. |
|----------|-------------|---------------------------------|------|
| 1 | 30-0009 | CONN-FLEX CORD STRAIGHT .50 HUB | 2 |
| 2 | 30-1287 | EATON MOTOR STARTER 4-6.3 AMP | 1 |
| 3 | 30-1289 | EATON PB ENCLOSURE | 1 |



| NO. | ZONE | DESCRIPTION | DATE | APPROVED |
|-----------|------|-------------|------|----------|
| REVISIONS | | | | |

SW

TIPPER TIE[®]
A DOVER INDUSTRIES COMPANY

DRAWN BY: CDS DATE: 03/24/10

CHECKED BY: MP DATE: 03/24/10

APPROVED BY: MP DATE: 03/24/10

RELEASED BY: CDS DATE: 03/24/10

ON/OFF SWITCH ASSY. EATON 4-6.3 A

SIZE: **B**

PART NO.: **00-3505-00**

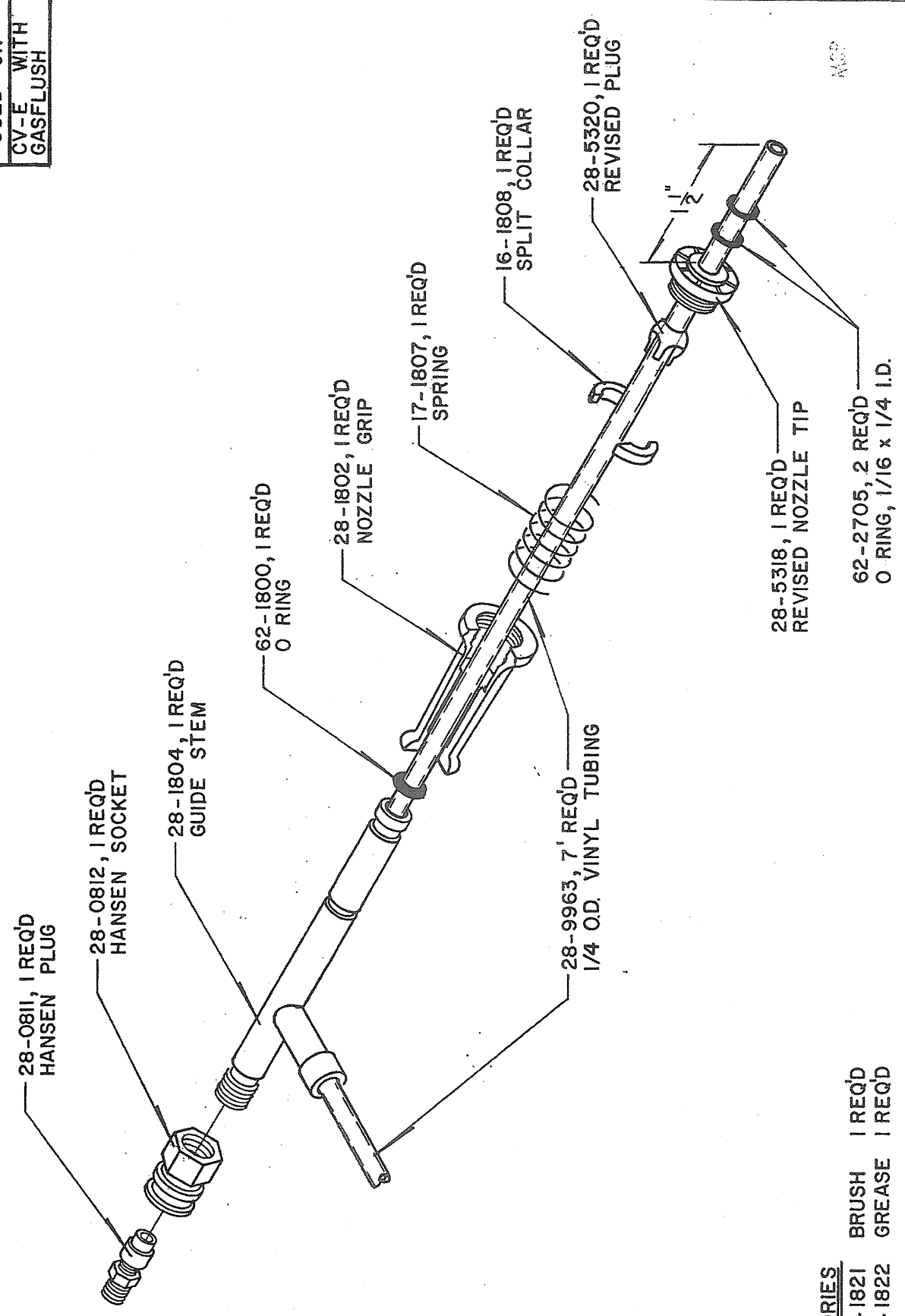
SCALE: 1:5

DO NOT SCALE DRAWING

SHEET: 1 of 1

REVISED

USED ON
CV-E WITH
GASFLUSH



ACCESSORIES

- 1. 99-1821 BRUSH 1 REQ'D
- 2. 99-1822 GREASE 1 REQ'D

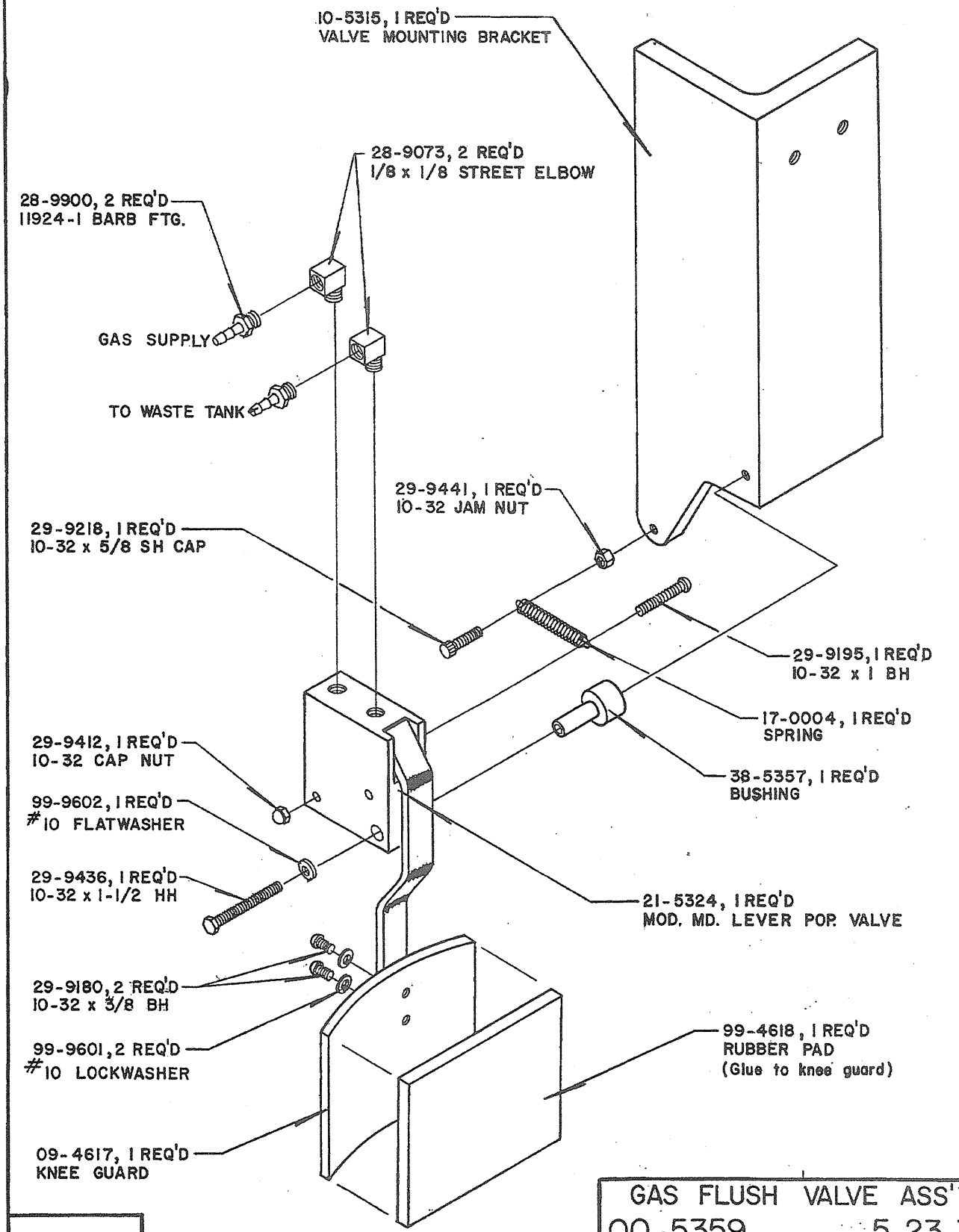
MSC

VACUUM NOZZLE ASSEMBLY
00-5325 5-24-77

ACCESSORIES:

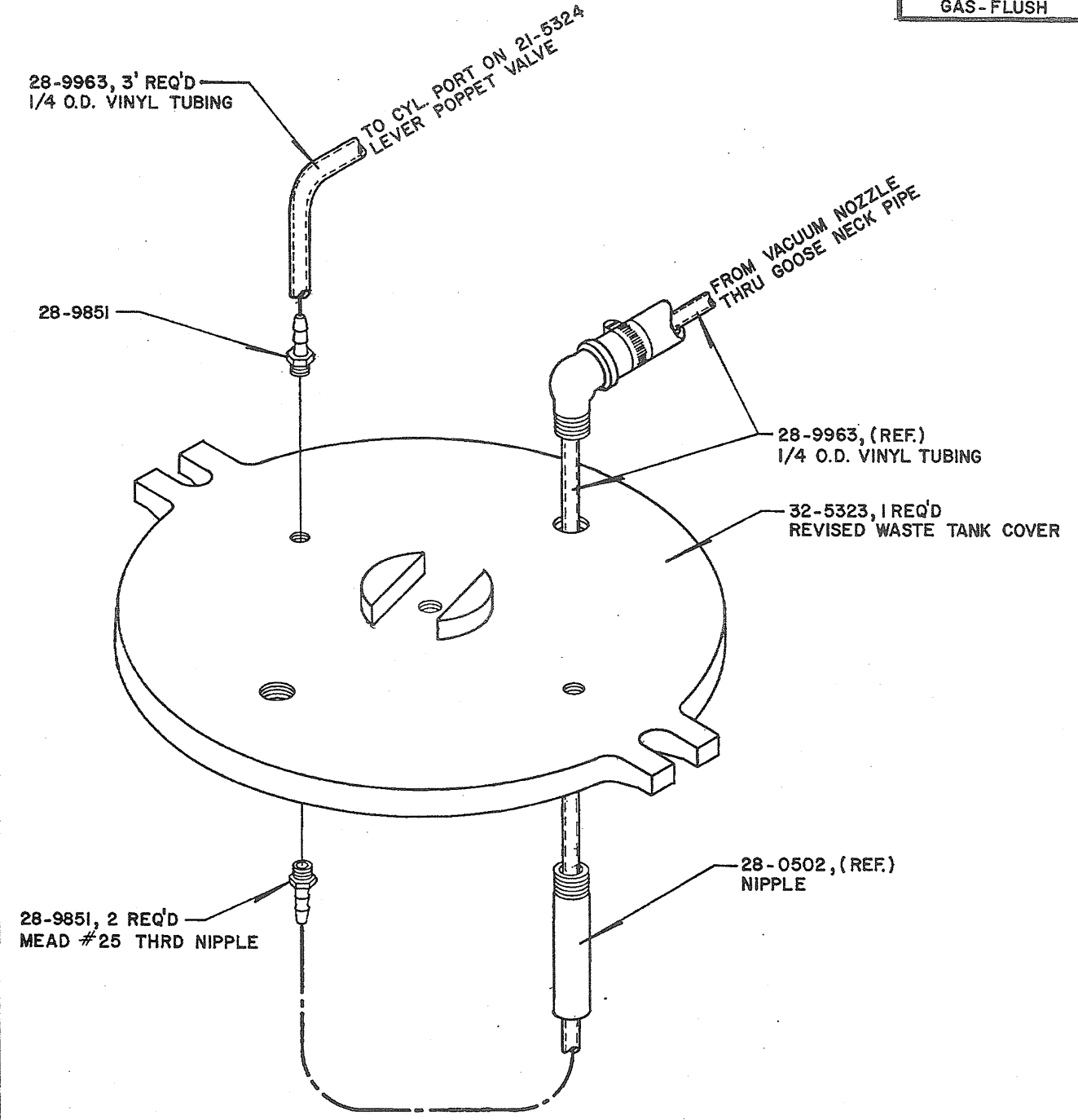
28-9963, 1/4 O.D. VINYL TUBING 8 FT REQ'D

| | |
|------|---------------|
| USED | ON |
| CV-E | WITH GASFLUSH |



GAS FLUSH VALVE ASS'Y
00-5359 5-23-77

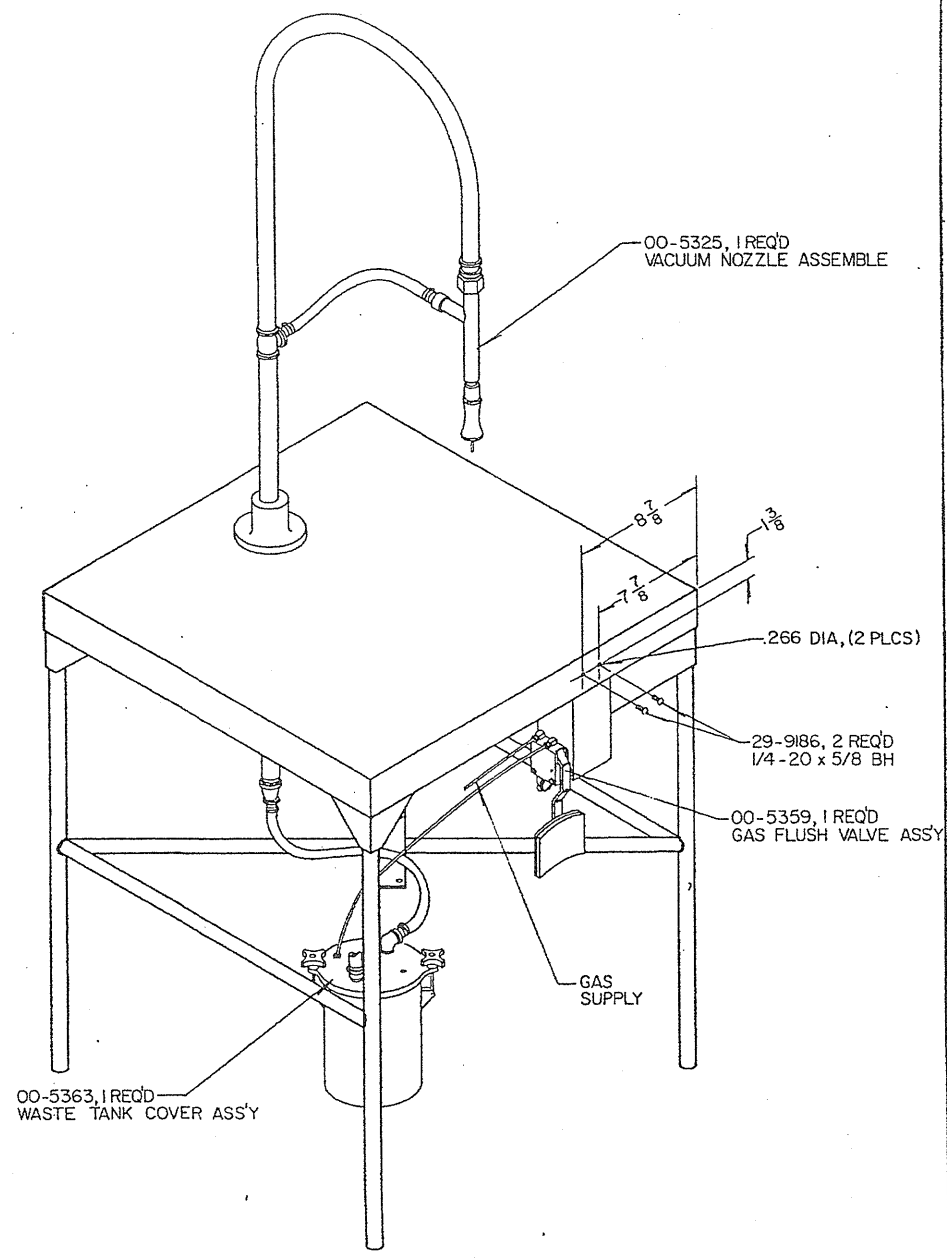
USED ON
CV-E WITH
GAS-FLUSH



NOTE:

1. WHEN CONVERTING A CLIPPER VAC-E TO A CLIPPER VAC-E WITH GAS-FLUSH, REMOVE STANDARD WASTE TANK COVER, (32-0104) FROM THE WASTE TANK, (99-0401) AND REPLACE IT WITH THE REVISED WASTE TANK COVER, (32-5323), SHOWN ABOVE, USING THE SAME HARDWARE IN ADDITION TO TWO MEAD NIPPLES, (28-9851) AND NECESSARY TUBING, (28-9963).
2. REFER TO DWG. NO. 00-0803 FOR HARDWARE ITEMS.

WASTE TANK COVER ASS'Y
00-5363 5-27-77



CV-E GAS-FLUSH CONV. KIT
 00-5364 6-2-77