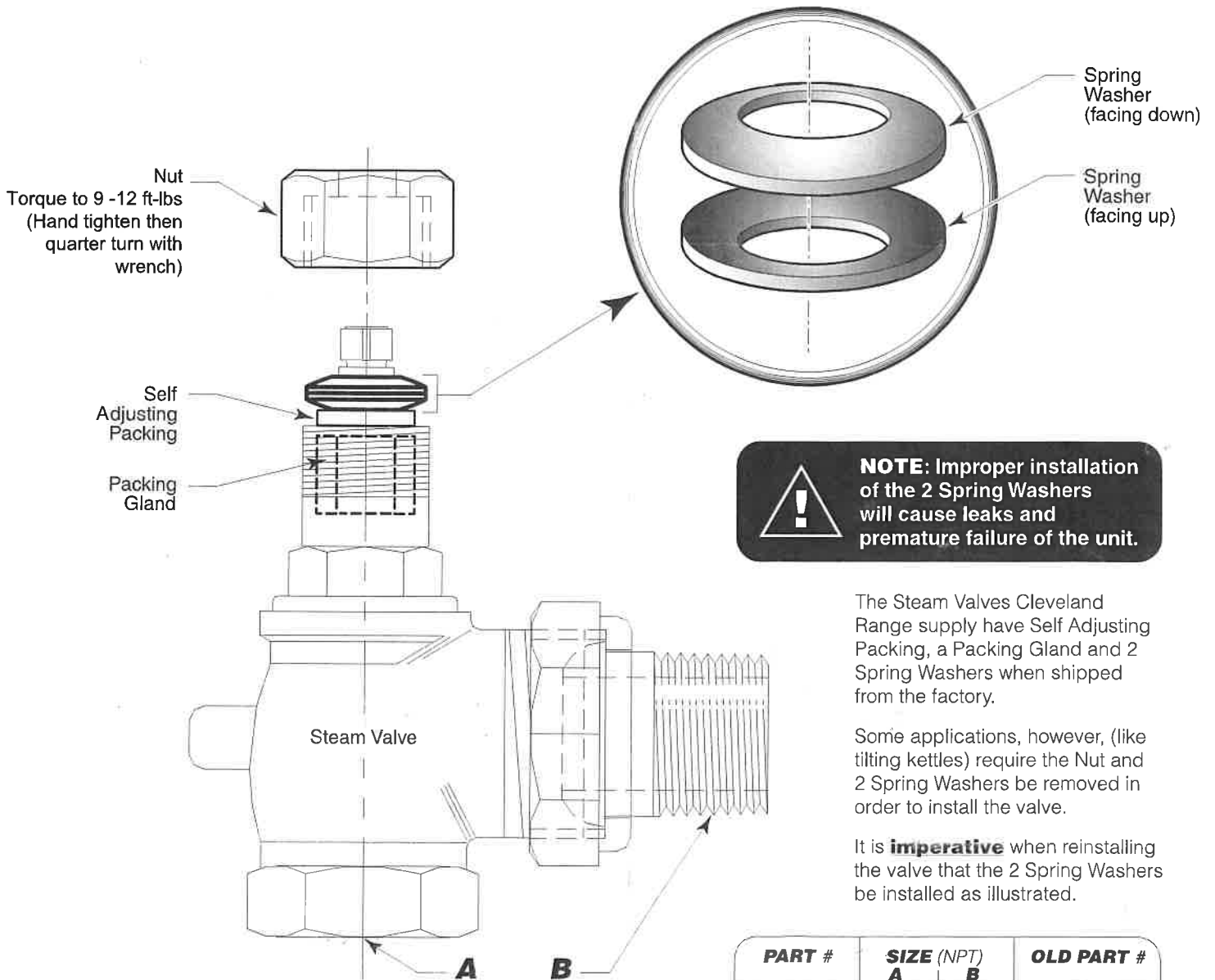


Service Bulletin

INSTALLING A STEAM CONTROL VALVE



NOTE: Improper installation of the 2 Spring Washers will cause leaks and premature failure of the unit.

The Steam Valves Cleveland Range supply have Self Adjusting Packing, a Packing Gland and 2 Spring Washers when shipped from the factory.

Some applications, however, (like tilting kettles) require the Nut and 2 Spring Washers be removed in order to install the valve.

It is **imperative** when reinstalling the valve that the 2 Spring Washers be installed as illustrated.

PART #	SIZE (NPT)		OLD PART #
	A	B	
KE02055-1	1/2"	1/2"	KE51370
KE02055-2	3/4"	3/4"	KE00350
KE02055-3	3/4"	3/4"	KE51259
KE02055-4	1 1/4"	1 1/4"	KE01212
KE02055-5	1 1/4"	1 1/4"	KE01212-1

1333 East 179th St.
Cleveland, Ohio
U.S.A. 44110

Phone: (216) 481-4900 Fax: (216) 481-3782
Visit our web site at www.clevelandrange.com

