

#	DESCRIPTION	DATE	APPROVED
C	ADDED NOTE TO USE EPOXY GLUE	04/04/2019	SZOHORI

									DIM. A
-	ST-28C	STAND ASSEMBLY							25
-	ST-28B	STAND ASSEMBLY							21 5/8
-	EST-28	STAND ASSEMBLY							17 5/8
-	ST-55	STAND ASSEMBLY							17 5/8
-	ST-42	STAND ASSEMBLY							17 5/8
-	ST-28	STAND ASSEMBLY							17 5/8

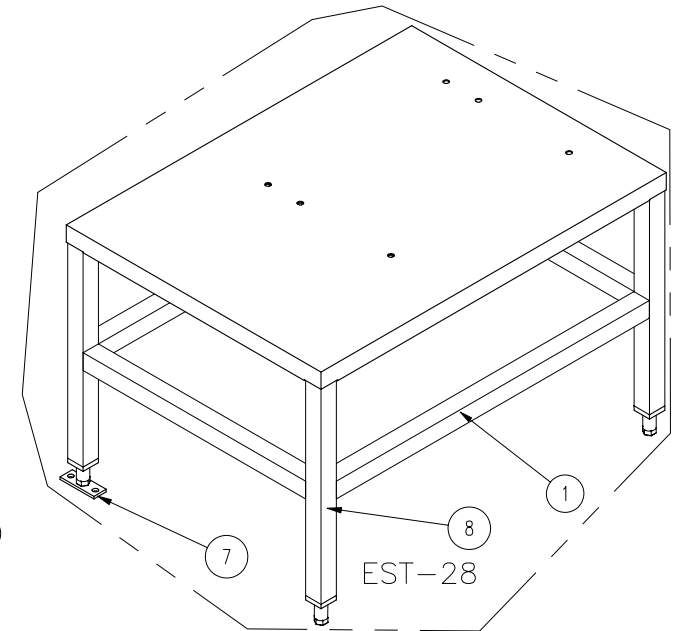
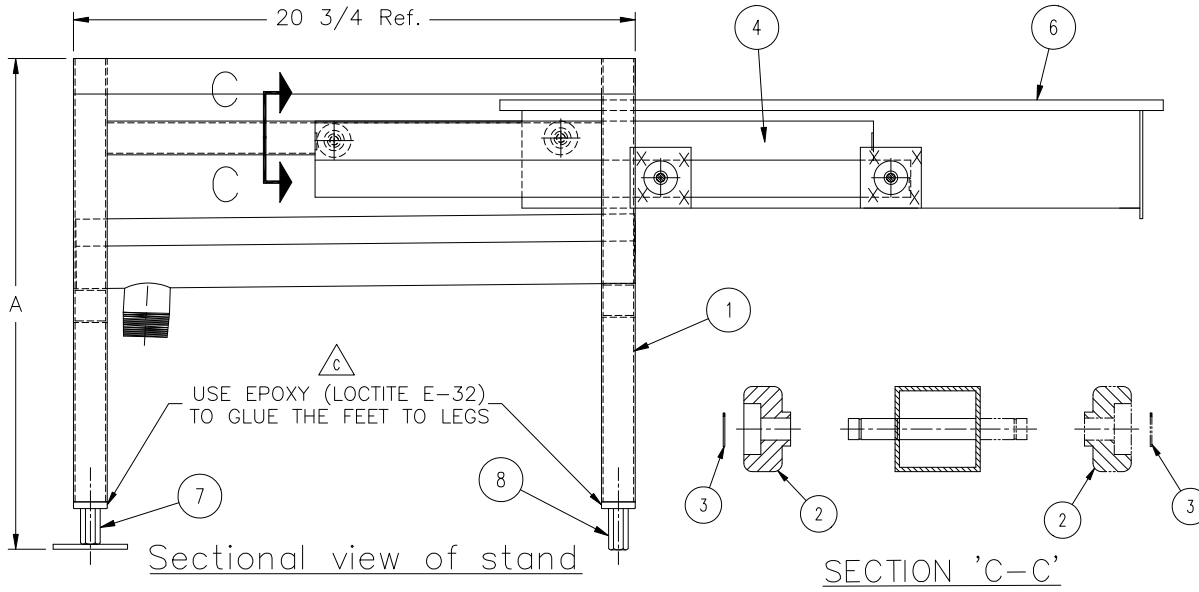


ST-28
ST-28B
ST-28C



ST-42 & ST-55

ITEM	PART_#	DESCRIPTION	QTY	QTY	QTY	QTY	QTY	QTY
1	ST00001-1	STAND WELDMENT	1	-	-	-	-	-
	ST00001-2	STAND WELDMENT	-	1	-	-	-	-
	ST00001-3	STAND WELDMENT	-	-	1	-	-	-
	ST00001-8	STAND WELDMENT	-	-	-	1	-	-
	ST00001-9	STAND WELDMENT	-	-	-	-	1	-
	ST00001-15	STAND WELDMENT	-	-	-	-	-	1
2	ST50010	WHEEL; SLIDE	4	8	8	-	4	4
3	FA95007-2	RETAINING RING	4	8	8	-	4	4
4	ST50008-1	SLIDE; LHS	1	2	2	-	1	1
5	ST50008-2	SLIDE; RHS	1	2	2	-	1	1
6	ST00003-1	PAN; WELDMENT/ASSEMBLY	1	-	2	-	1	1
	ST00003-2	PAN; WELDMENT/ASSEMBLY	-	2	-	-	-	-
7	STD00002	REAR FOOT ASSEMBLY	2	3	3	2	2	2
8	STD50026	ADJUSTABLE FOOT	2	3	3	2	2	2
9	SE95026	EQUIP. CARE/CLEANING INST.	1	1	1	1	1	1
10	KE02080-1	SPLASH SCREEN	1	-	2	-	1	1
	KE02080-2	SPLASH SCREEN	-	2	-	-	-	-



<small>THIS DESIGN COVERS A PROPRIETARY ITEM AND IS THE PROPERTY OF CLEVELAND RANGE LTD. THIS DRAWING IS NOT TO BE COPIED OR USED WITHOUT THE APPROVAL OF CLEVELAND RANGE LTD.</small>		<small>FOR GENERAL TOLERANCES REFER TO PWD-943</small>		CLEVELAND RANGE LTD. <small>8251 KEELE STREET, CONCORD, ONTARIO, CANADA</small>		TITLE STAND ASSEMBLY EST/ST-28, 42, 55	
MATERIAL TYPE & GRADE FORM SIZE FINISH		<small>DO NOT SCALE PRINTED DRAWING</small>		DRAWN BY H.JAMSHIDI		DATE JUNE 9, 2009	
				SIZE C		DRAWING NO. ST-28 TO 55	
				SHEET 1 OF 1		REV C	