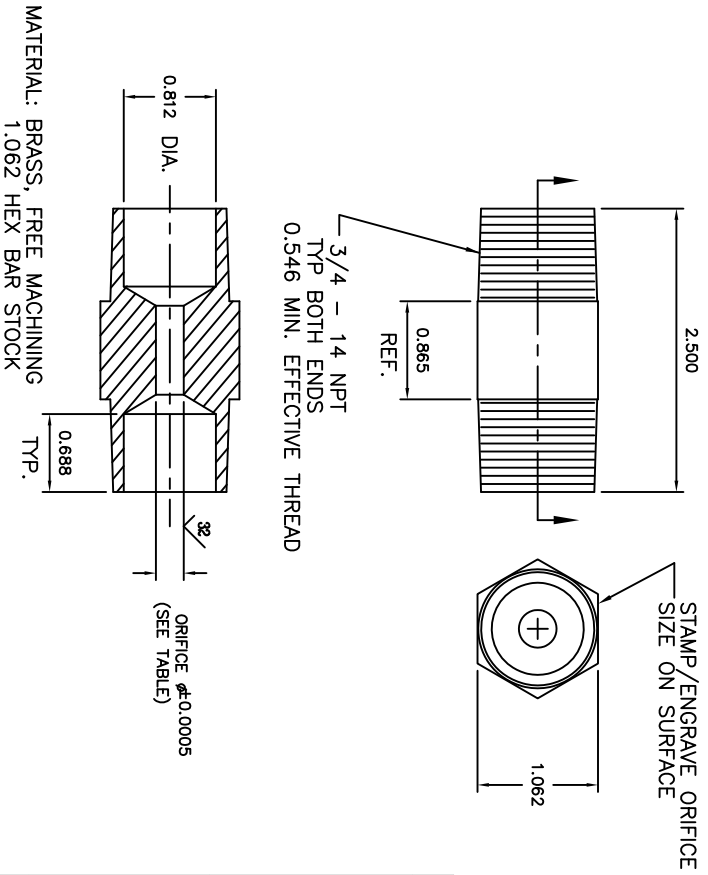


CONSULT ENGINEERING FOR OTHER
ALTITUDES AND FUEL GASES



30 GAL T1 SKILLET				USED PRIOR TO JANUARY 2004		
GAS TYPE (W.C.)	ALTITUDE IN FT.	ORIFICE Ø	PART #	Where Used	ORIFICE Ø	PART #
NATURAL GAS (3.5")	0 - 1999 (SEA LEVEL)	0.236	KE55278-39	AGA, CGA	#0	KE55278-1
	2000 - 3999	0.228	KE55278-3	AGA, CGA	#A	KE55278-2
	4000 - 5999	0.224	KE55278-40	AGA, CGA	#1	KE55278-3
	6000 - 7999	0.218	KE55278-5	AGA, CGA	#2	KE55278-4
BUTANE (10")	8000 - 10000	0.212	KE55278-41	AGA, CGA	7/32	KE55278-5
	0 - 1999 (SEA LEVEL)	0.246	KE55278-1	CE		
PROPANE (10")	0 - 1999 (SEA LEVEL)	0.128	KE55278-12	AGA, CGA, CE	9/64	KE55278-10
	2000 - 3999	0.125	KE55278-13	AGA, CGA	#29	KE55278-11
	4000 - 7999	0.122	KE55278-42	AGA, CGA	#30	KE55278-12
	8000 - 10000	0.118	KE55278-43	AGA, CGA	1/8	KE55278-13
BUTANE (10")	0 - 1999 (SEA LEVEL)	0.125	KE55278-13		#29	KE55278-11
	2000 - 3999	0.122	KE55278-42		#30	KE55278-12
	4000 - 5999	0.118	KE55278-43		1/8	KE55278-13
BUTANE (10")	6000 - 10000	0.116	KE55278-44		#31	KE55278-14

40 GAL T1 SKILLET						
GAS TYPE (W.C.)	ALTITUDE IN FT.	ORIFICE Ø	PART #	Where Used	ORIFICE Ø	PART #
NATURAL GAS (3.5")	0 - 1999 (SEA LEVEL)	0.302	KE55278-22	AGA, CGA		
	2000 - 3999	0.296	KE55278-23	AGA, CGA		
	4000 - 5999	0.290	KE55278-24	AGA, CGA		
	6000 - 7999	0.281	KE55278-25	AGA, CGA		
BUTANE (10")	8000 - 10000	0.272	KE55278-26	AGA, CGA		
	0 - 1999 (SEA LEVEL)	0.287	KE55278-27	CE		
PROPANE (10")	0 - 1999 (SEA LEVEL)	0.173	KE55278-30	AGA, CGA		
	2000 - 3999	0.169	KE55278-31	AGA, CGA		
	4000 - 5999	0.166	KE55278-32	AGA, CGA		
	6000 - 7999	0.161	KE55278-33	AGA, CGA		
BUTANE (10")	8000 - 10000	0.156	KE55278-34	AGA, CGA		
	0 - 1999 (SEA LEVEL)	0.159	KE55278-35	CE		
BUTANE (10")	0 - 1999 (SEA LEVEL)	0.161	KE55278-33			
	2000 - 3999	0.159	KE55278-38			
	4000 - 5999	0.154	KE55278-35			
	6000 - 7999	0.149	KE55278-36			
BUTANE (10")	8000 - 10000	0.144	KE55278-37			