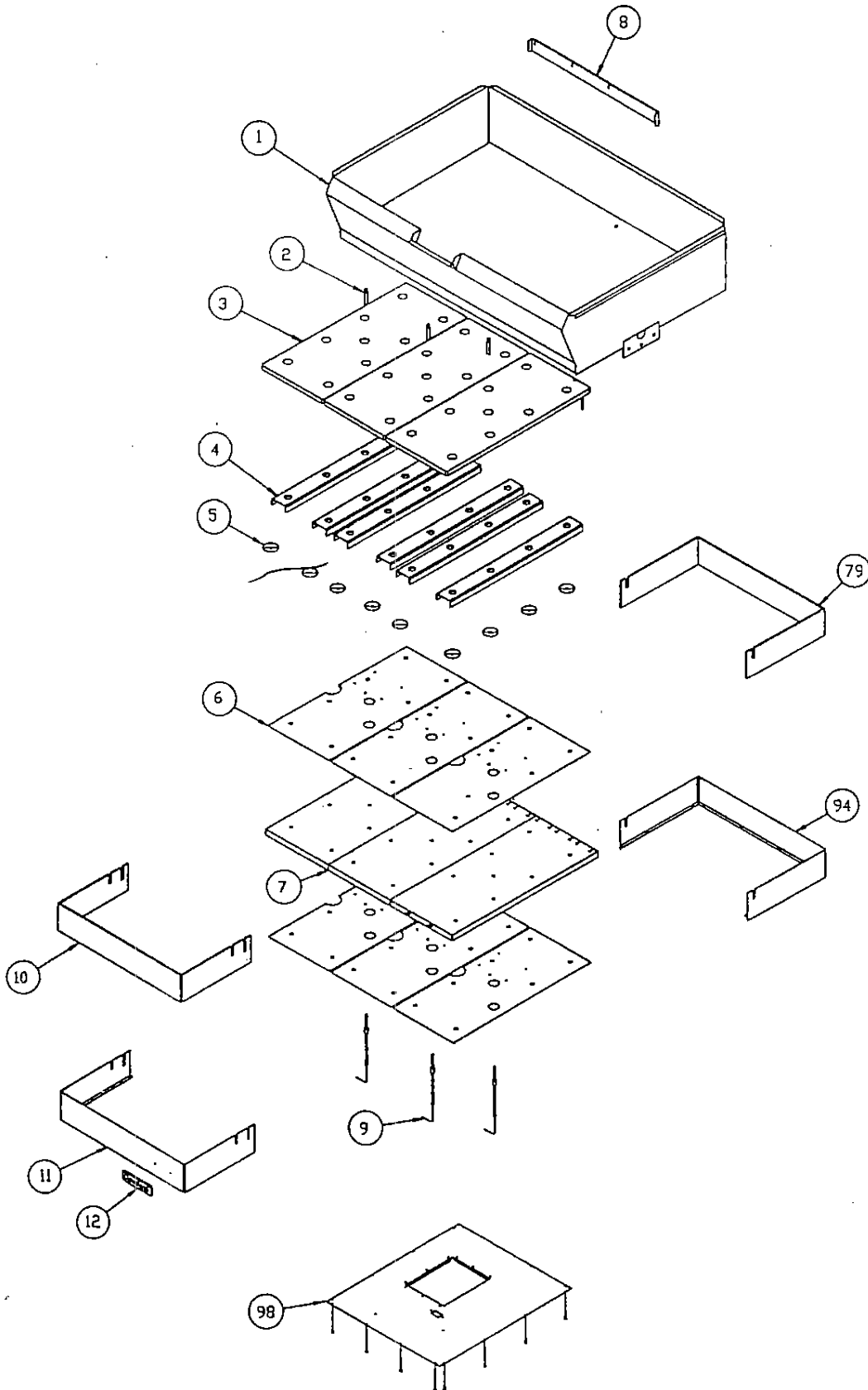


ELEC. T4 models

SKILLET

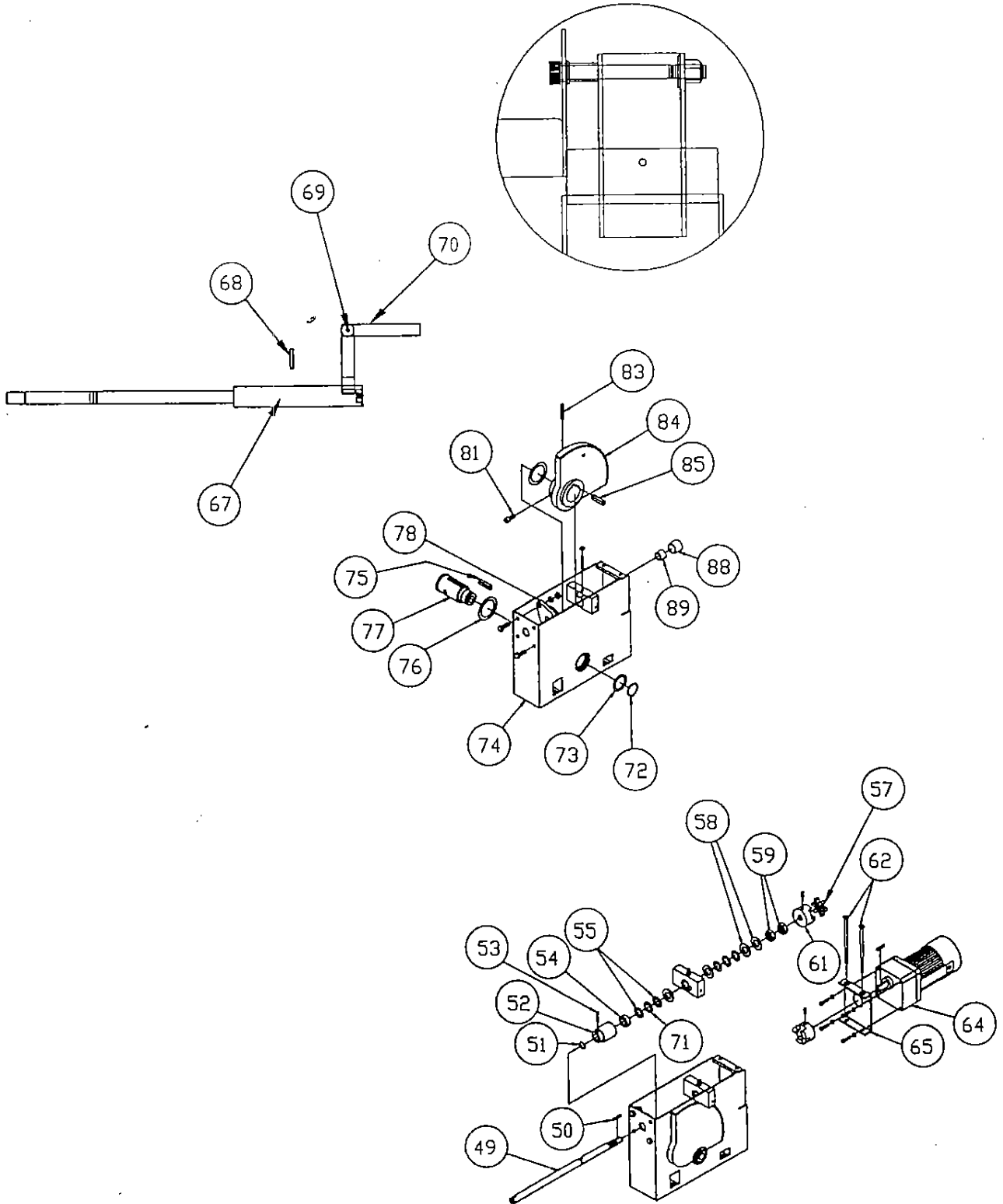
SEL-40-T4, SEL-40-HT4, SEL-30-T4 & SEL-30-HT4.



SKILLET

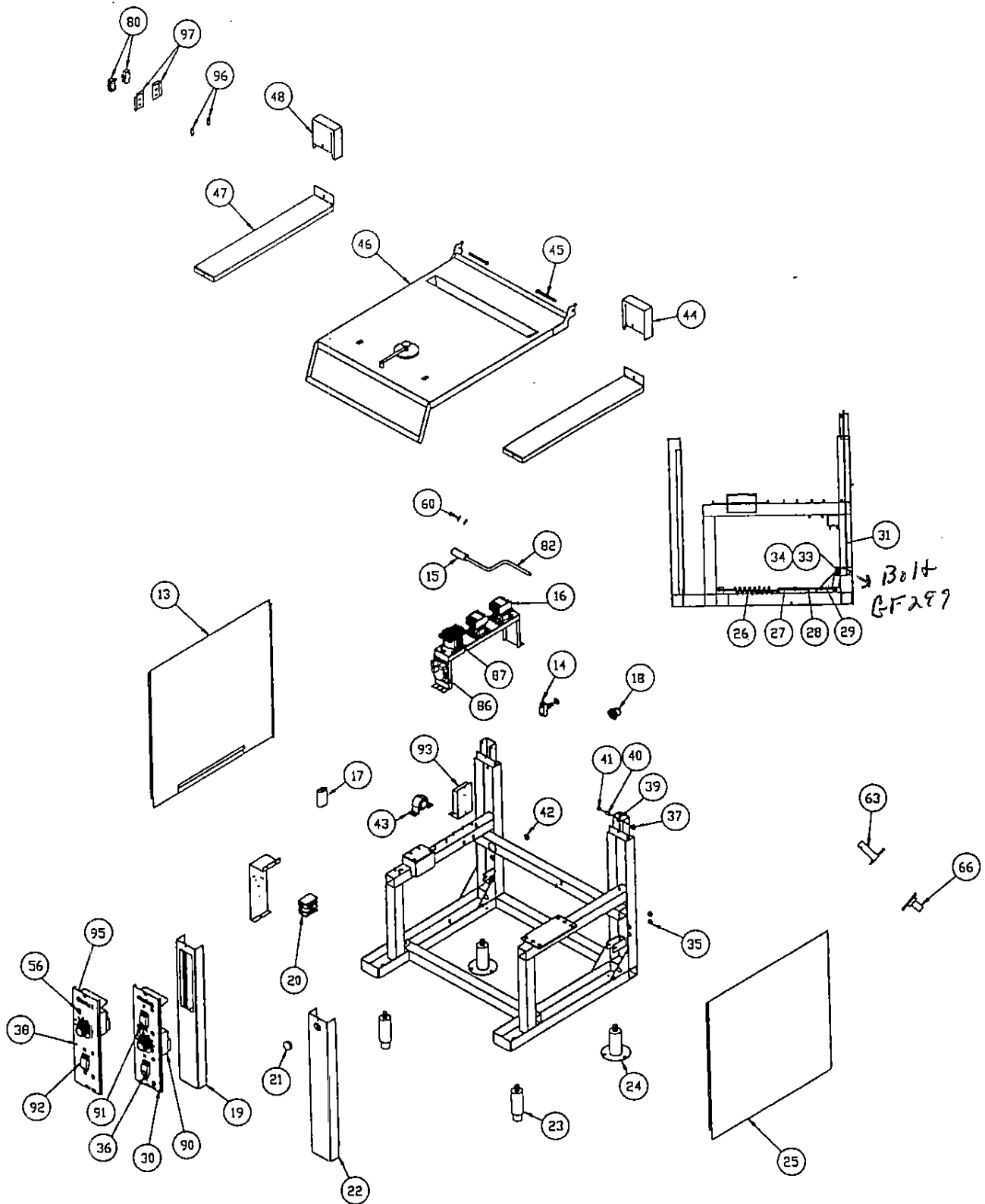
SEL-40-T4, SEL-40-HT4, SEL-30-T4 & SEL-30-HT4.

LID HINGE MOUNTING



SKILLET

SEL-40-T4, SEL-40-HT4, SEL-30-T4 & SEL-30-HT4.



SKILLET FRYPAN
MODEL-SEL-40-T4, SEL-40-HT4, SEL-30-T4, SEL-30-HT4

ITEM	PART	DESCRIPTION	SEL-30-T4	SEL-30-HT4	SEL-40-T4	SEL-40-HT4
1	2499299	Pan Assy	1	1		
	2456199	Pan Assy			1	1
Option	2516499	Pan Assy 2" Draw-Off Valve	1	1		
Option	2516299	Pan Assy 2" Draw-Off Valve			1	1
2	2423600	Bayonet Adapter	2	2	3	3
3	2491404	Element 208V 12 KW	2	2		
	2491402	Element 240V 12 KW	2	2		
	2491400	Element 480V 12 KW	2	2		
	2491405	Element 208V 16 KW	2	2		
	2491403	Element 240V 16 KW	2	2		
	2491401	Element 480V 16 KW	2	2		
	2491404	Element 208V 18 KW			3	3
	2491402	Element 240V 18 KW			3	3
	2491400	Element 480V 18 KW			3	3
	2491405	Element 208V 24V KW			3	3
	2491403	Element 240V 24V KW			3	3
	2491401	Element 480V 24V KW			3	3
4	2478900	Channel Elec. Heater MTG	4	4	6	6
5	2231500	Spherical Washer	15	15	22	22
5	2462500	Cover, Retainer Insulation	4	4	6	6
7	2523100	Insulation Bottom	2	2	3	3
8	2495600	Strip Fil	1	1		
	2497440	Strip Fill			1	1
9	2475100	Thermocouple Elec.	2	2	3	3
10	2459901	Insulation, Skirt, Front Half	1	1		
	2459900	Insulation, Skirt, Front Half			1	1
11	2495900	Skirt Front Half	1	1		
	2461700	Skirt Front Half			1	1
12	2407600	Name Plate	1	1	1	1
13	2466100	Side Panel, Left Outside	1	1	1	1
14	2474300	Switch Reset	1	1	1	1
15	2468000	Housing Drive Handle Man	1		1	
16	2475900	Contactor 40A 3 Pole	2	2	2	2
17	2476600	Capacitor	1		1	
18	078115-1	Water Proof Shield	1	1	1	1
19	2461599	Front panel Assy L/t	1	1	1	1
20	1193900	Terminal Block	3	3	3	3
21	2493700	Heyco Dry Out Plug	1		1	
22	2461399	Front Panel Assy R/h	1	1	1	1
23	2500300	Leg 6" Adjustable	2	2	2	2
24	2500301	Flanged Leg 6" Adjustable	2	2	2	2
25	2465900	Side Panel, Right Outside	1	1	1	1
26	2452300	FryPan Spring	2	2	2	2

SKILLET FRYPAN
MODEL-SEL-40-T4, SEL-40-HT4, SEL-30-T4, SEL-30-HT4

ITEM	PART	DESCRIPTION	SGL-30-T4	SGL-30-HT4	SGL-40-T4	SGL-40-HT4	
27	2374900	Connecting Rod R/h	2	2	2	2	
28	2381700	Turnbuckle Body	2	2	2	2	
29	2374901	Connecting Rod L/h	2	2	2	2	
30	2464099	Control Panel Assy	1		1		
31	2459000	Bell Crank Hook	2	2	2	2	
33	2529498	Bell Crank Assy L/h	1	1	1	1	
34	2529499	Bell Crank Assy R/h	1	1	1	1	
35	G02973-6	Plastic Hole Plug 3/4	2	2	2	2	
36	2478300	Label, Control Panel ←	Obsolete-No Replacement			1	
37	F85	5/16 Hex Lock Nut	2	2	2	2	
38	2478500	Label, Control Panel		1		1	
39	2492300	Washer - Shoulder Bolt	2	2	2	2	
40	2463900	Spacer, Lid Mount	2	2	2	2	
41	2357300	Flanged Bearing	2	2	2	2	
42	2493600	Heyco Double D Plug	1	1	1	1	
43	2475200	Bearing 1/4 Dodge	1	1	1	1	
44	2458500	Cover, Lid Hinge, R/h	1	1	1	1	
45	F455	3/8 Shoulder Bolt x 3/2 Lg	2	2	2	2	
46	2457199	Lid Assy 30 Gal	1	1		1	
	2457198	Lid Assy 40 Gal			1	1	
47	2461699	Top Cover Panel Assy R/h & L/h	2	2	2	2	
48	2458501	Cover, Lid Hinge, L/h	1	1	1	1	
49	2467000	Shaft, Drive (Elec.)	1		1		
	2466900	Shaft, Drive (Manual)		1		1	
50	2488000	Key Way	1		1		
51	2461101	Ring, Retaining	1	1	1	1	
52	2467900	Gear, Drive Worm	1	1	1	1	
53	2468201	Pin Spring	1	1	1	1	
54	2466800	Spacer, Drive Shaft	1	1	1	1	
55	2467200	Washer, Thrust Roller	4	4	4	4	
56	G01296-2	Pilot Assy Amber	1	1	1	1	
57	2487600	L Jaw Insert	1		1		
58	2500100	Washer Flat - Zink Plated	4	4	4	4	
59	F459	3/4 hex Jam Nut	2	2	2	2	
60	2468200	Pin Spring	2	2	2	2	
61	2487500	L Jaw Coupling	2		2		
62	2461200	Screw Flat Hd Slot 5/16	2		2		
63	2459399	Shaft Assy, tilt Left Side	1	1	1	1	
64	2468300	Type "W" Gear Motor (AC)	1		1		
65	2463700	Channel Gear Motor MTG	1				
66	2459699	Shaft Assy, Flange Tilt	1	1	1	1	
67	2504799	Housing Assy Manual Handle		1		1	
68	2500200	Dowel Pin		1		1	
69	F478	Socket Shoulder Screw		1		1	

SKILLET FRYPAN
MODEL-SEL-40-T4, SEL-40-HT4, SEL-30-T4, SEL-30-HT4

ITEM	PART	DESCRIPTION	SGL-30-T4	SGL-30-HT4	SGL-40-T4	SGL-40-HT4
70	2504900	Handle, Manual Drive		1		1
71	2467300	Bearing, Thrust Needle Roller	2	2	2	2
72	2461100	Ring, Retaining	1	1	1	1
73	2466600	Washer Flat s/s	1	1	1	1
74	2457399	Gearbox Assy	1	1	1	1
75	2467500	Key, Tilt Shaft Assy	1	1	1	1
76	2466700	Washer, Flat s/s	2	2	2	2
77	2467400	Shaft, Tilt Gear	1	1	1	1
78	2488600	Ball bearing FaFnir	1	1	1	1
79	2459801	Insulation Skirt Back Half	1	1		
	2459800	Insulation Skirt Back Half			1	1
80	2474500	Switch Tilt Limit	2	1	2	1
81	F52	3/8 - 24 x 1 1/2 Hex HD Screw Blk	1	1	1	1
82	2468100	Handle Drive Manual	1	1	1	1
83	F450	Hex Socket Set Screw	1	1	1	1
84	2467699	Gear Assy, Tilt	1	1	1	1
85	2467100	Key Tilt, Gear Assy	1	1	1	1
86	2476300	Motor Control Board	1		1	
87	2475800	Transformer Electric <i>KE 53837-10</i>	1	1	1	1
	2487400	Bronze Bearing	1	1	1	1
	2487300	Needle Bearing	1	1	1	1
90	2474800	<i>Knob</i> Temperature On/Off	1	1	1	1
91	2474200	Switch Power Tilt	1	1	1	1
92	2474100	Switch Power On/Off	1	1	1	1
93	2474700	High Limit (Zytron)	1	1	1	1
94	2495800	Skirt Back Half	1	1		
	2461800	Skirt Back Half			1	1
95	2464299	Control Panel Assy		1		1
96	G01503-50	Ohio Weld Nut Double	2	2	2	2
97	2472300	Fishpaper, Microswitch MTG	2	1	2	1
98	2495700	Retainer Plate, Skirt	1	1		
	2461900	Retainer Plate, Skirt			1	1