

Production Instruction for SET-10, Texas Roadhouse: Q12129

Please follow this step to produce all the Texas Roadhouse Unit from now onwards (May 27, 2024)

1. Install the new RTD by fishing it into the console. Wire the new RTD in the same manner as the current one.

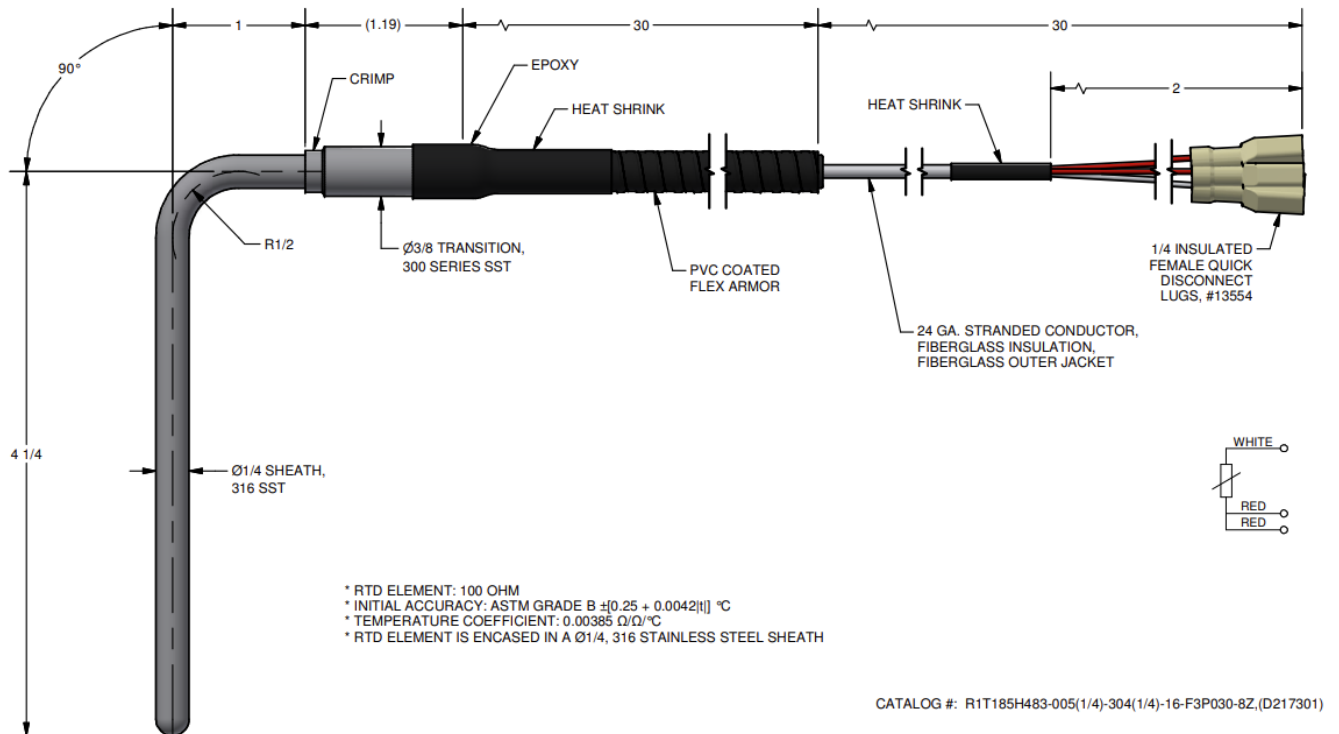


Figure 1: SK2345101-1 - RTD Sensor

2. Replace the Easy Dial with the newer one provided in the kit. Ensure all connections are made in the same manner as the previous one.

- Utilize a 5/16-18 Tap bit to tap the two marked holes on the top side of the middle heating element.

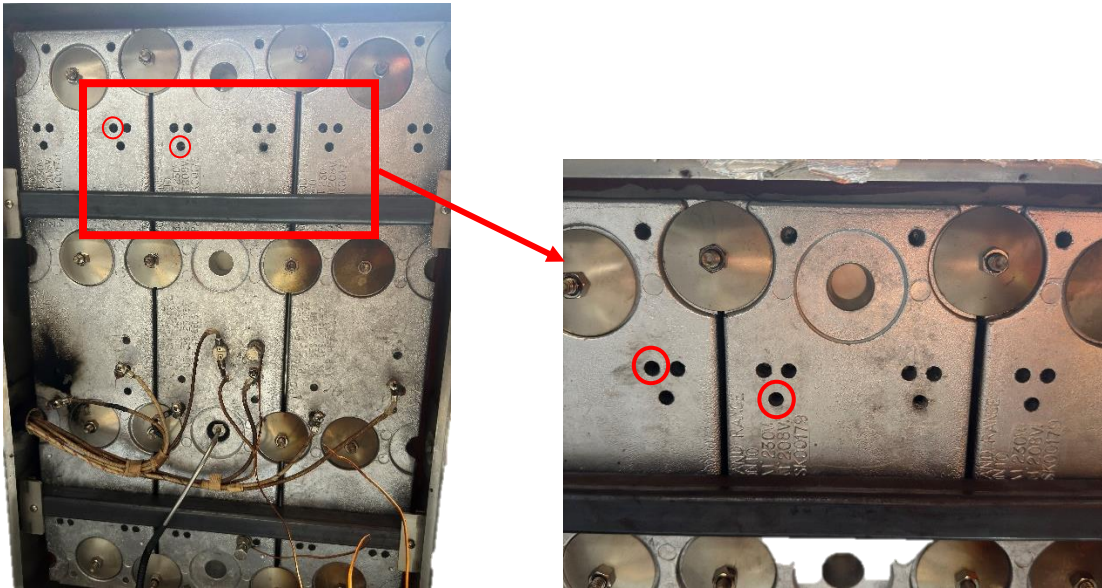


Figure 2: Marked holes to tap 5/16-18

- Please put the sleeve RB01567; approx. 12" long on the RTD wire.
- Position the RTD in the center of the hole and secure it by attaching the Mounting bracket to the heating element using 2 screws (5/16-18) and washers.



- Ensure that the RTD is securely fastened and does not pull out of the bracket.