



COOK/CHILL PASTA KETTLES

MODELS: P-KDL-60-CC P-KDL-150-CC
 P-KDL-100-CC P-KDL-200-CC



Cleveland Standard Features

- Full 60,100,150 or 200 gallon kettle working capacity
- Bottom cold water injection system for rinsing pasta products
- Two large overflows with heavy duty rim bar
- Top mounted, easily removable temperature probe
- Simmer control for cooking delicate products
- 3" diameter air operated, flush mounted piston draw-off valve (requires air compressor)
- Spiral flights for even cooling
- Kettle mounted valve box for single point utility connections
- 100 psi steam jacket rating and safety valve
- Type 316 stainless steel for all food contact surfaces
- Water fill faucet with swing spout
- NSF approved
- Accepted for use in USDA inspected facilities

Note: Each COOK/CHILL pasta kettle requires a remote mounted control center for operation which must be specified separately.

Standard Features for Kettle Control Center:

- Solid state temperature control with digital read-out
- Time/Temperature Chart Recorder to provide permanent record of Batch Processing
- Switch for cold water injection system
- Automatic and manual steam control
- Automatic and manual water cooling
- Simmer control for delicate products
- Automatic water meter with accumulative "add on" button and digital readout
- U.L. approved

Options & Accessories

- Stainless steel lift-off cover
- Perforated stainless steel pasta basket with sliding dump gate
- Dolly for pasta basket
- Single or dual remote control center
- 3" flush mounted ball valve
- Loading bucket and dolly
- Electric chain hoist for lifting pasta basket

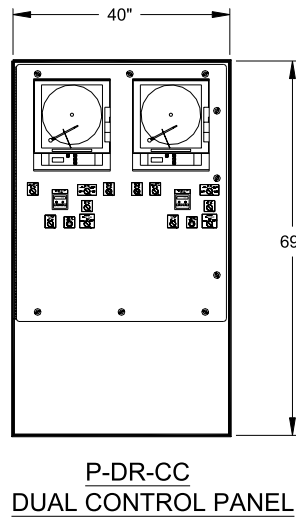
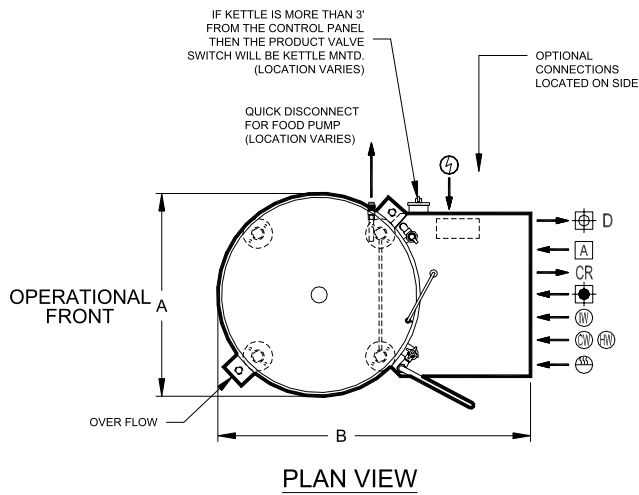
ITEM NUMBER _____

JOB NAME / NUMBER _____



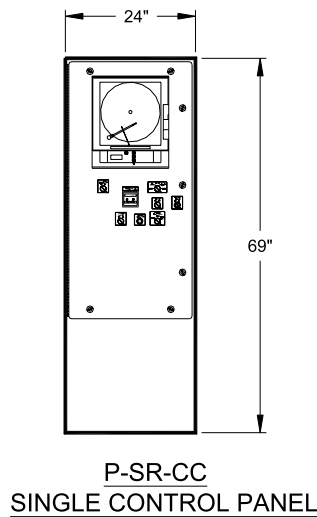
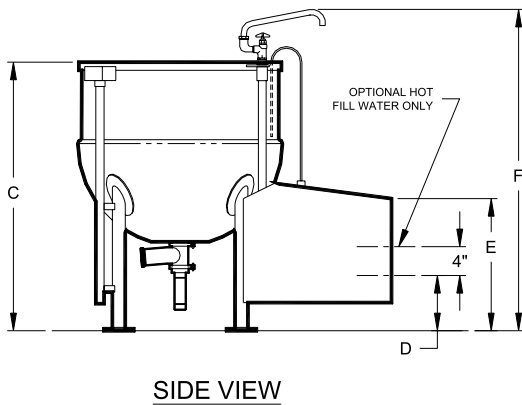
Short Form Specifications

Shall be CLEVELAND Model P-KDL - ____ - CC COOK/CHILL STATIONARY PASTA KETTLE, ____ gallons; leg mounted; 2/3 jacketed, direct steam; 100 psi Steam Jacket Pressure Rating; 316 Stainless Steel Liner; 3" diameter air operated, flush mounted Piston Draw-Off Valve; bottom Water injection System; Overflow Ring with two large vertically mounted Overflow Drains; Automatic Water Meter; Water Fill Faucet with swing spout; Time/Temperature Chart Recorder (located in Control Center).



MINIMUM CLEARANCE FOR KETTLES	
FRONT	36"
SIDE	12"
REAR	12"

NOTE:
CONTROL PANEL
DEPTH 18 3/4"



- ELECTRICAL POWER TO AND FROM CONTROL PANEL**
- CONTRACTOR MUST CUT ENTRY HOLE
 - TOP OR BOTTOM POWER ENTRY RECOMMENDED
 - MUST USE PROPER CONNECTIONS TO MAINTAIN U.L. LISTING

DIMENSIONS

MODEL	A	B	C	D	E	F	ELECTRICAL PER KETTLE- 120V/1PH/60Hz
P-KDL-60-CC	32"	52"	45 1/2"	8"	24"	56"	8 AMPS
P-KDL-100-CC	39"	59"	49 1/2"	9"	28"	60"	10 AMPS
P-KDL-150-CC	45"	63"	55 1/2"	9"	30"	66"	10 AMPS
P-KDL-200-CC	49"	67"	57 1/2"	9"	32"	68"	10 AMPS

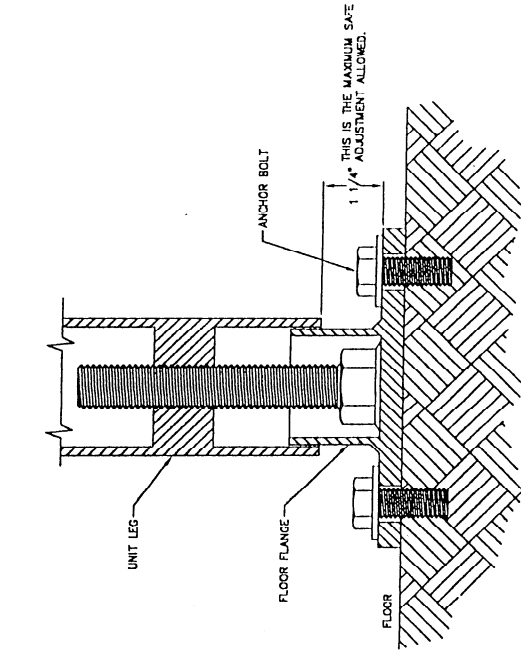
UTILITY CONNECTIONS

MODEL	CHILLED WATER INLET	CHILLED WATER RETURN	COLD POTABLE WATER	HOT** WATER	CONDENSATE RETURN	DRAIN	AIR INLET	STEAM	COLD INJECTOR WATER
					CR	D			
P-KDL-60-CC	3/4" 15 GPM	3/4"	1/2" 15 GPM	1/2" 15 GPM	1/2"	3/4"	1/2" 1 CFM	3/4" 320 lbs/hr	3/4" 15 GPM
P-KDL-100-CC	1" 20 GPM	1"	3/4" 20 GPM	3/4" 20 GPM	3/4"	1"	1/2" 1 CFM	1" 525 lbs/hr	3/4" 20 GPM
P-KDL-150-CC	1 1/4" 20 GPM	1 1/4"	3/4" 20 GPM	3/4" 20 GPM	1"	1 1/4"	1/2" 1 CFM	1 1/4" 780 lbs/hr	3/4" 20 GPM
P-KDL-200-CC	1 1/4" 25 GPM	1 1/4"	3/4" 20 GPM	3/4" 20 GPM	1"	1 1/4"	1/2" 1 CFM	1 1/4" 1050 lbs/hr	3/4" 20 GPM

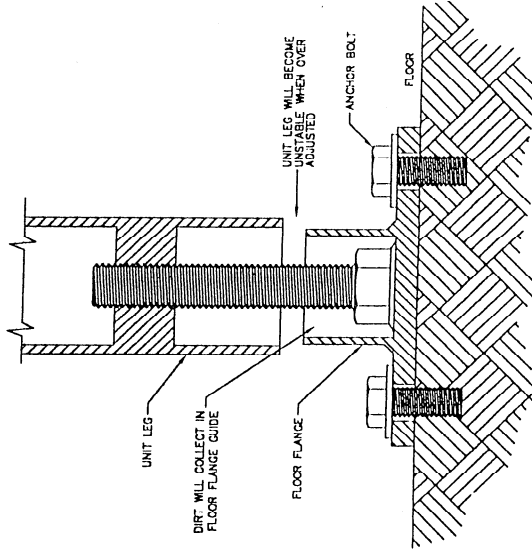
**** HOT FILL WATER IS OPTIONAL
65 PSI STEAM OPERATING PRESSURE IS RECOMMENDED**

NOTES:

AFTER UNIT IS LEVEL, ANCHOR ALL FLOOR FLANGES TO THE FLOOR BY USING AN ANCHOR BOLT IN EACH HOLE OF THE FLANGES.



CORRECT ADJUSTMENT
OF FLOOR FLANGE



INCORRECT ADJUSTMENT
OF FLOOR FLANGE

J.C.PARDO & SONS INC.
1250 REAMES RD. BALTO MD. 21220
PHONE (410) 391-3600 FAX (410) 391-8042



CHECKED BY: JAY S.

DATE: 4-27-96

SCALE: NONE

2" TO 2 1/2" FLOOR FLANGE
ADJUSTMENT INSTRUCTIONS

This drawing and all information contained therein is the property of J.C. Pardo & Sons Inc., Balto MD. This information is confidential and must not be made public or copied. It is loaned subject to return upon demand and is not to be used directly or indirectly in any way detrimental to J.C. Pardo & Sons.

SIZE: B

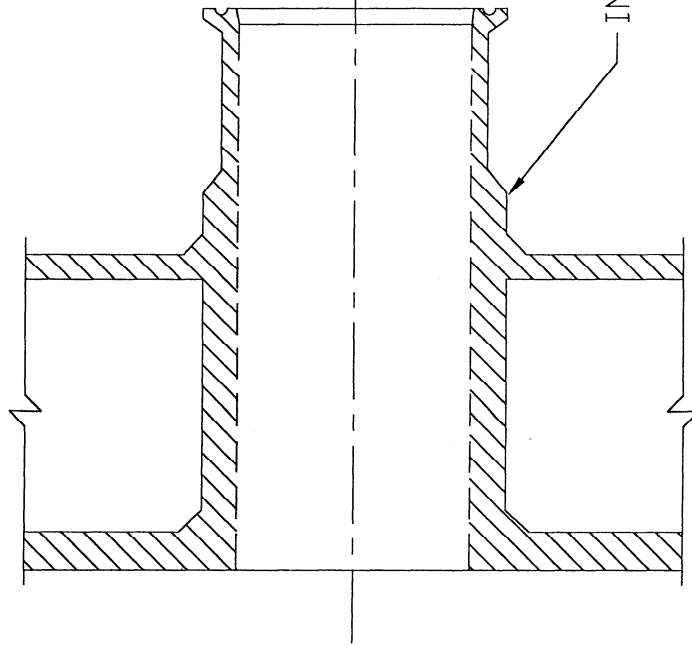
REV.

DRAWING NUMBER
8576

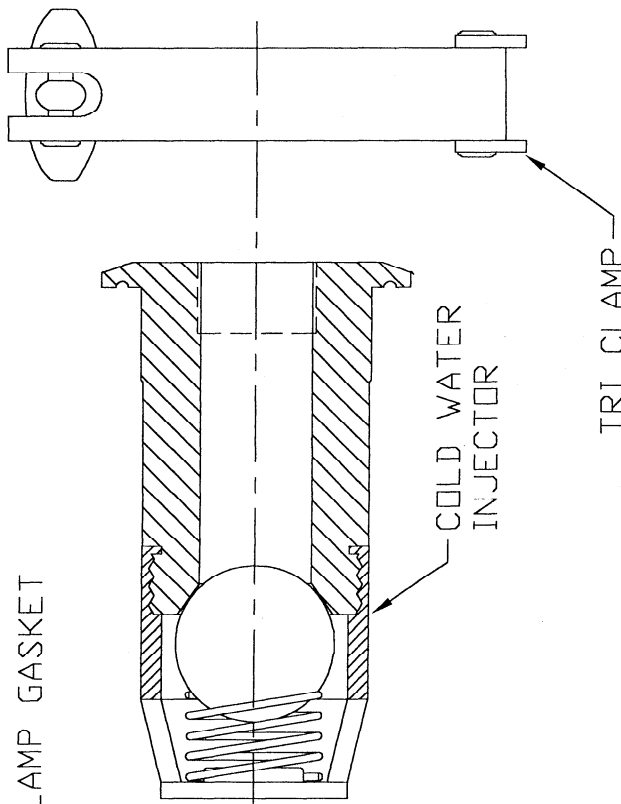
SHEET
1 of 1

DAILY CLEANING INSTRUCTIONS

- 1) REMOVE CLAMP FROM COLD WATER INJECTOR AND INJECTOR HOUSING.
- 2) REMOVE INJECTOR FROM HOUSING AND REMOVE TRI-CLAMP GASKET FROM INJECTOR.
- 3) CLEAN INJECTOR AND HOUSING WITH CLEANING SOLUTION.
- 4) CLEAN TRI-CLAMP GASKET.
- 5) PLACE GASKET ON INJECTOR AND REPLACE INJECTOR INTO HOUSING, REPLACE CLAMP. (HAND TIGHTEN ONLY)



TRI CLAMP GASKET



COLD WATER INJECTOR

TRI CLAMP

REV.	DESCRIPTION	BY	DATE
A	REDRAW	G.E.A.	3/24/00
REVISIONS			

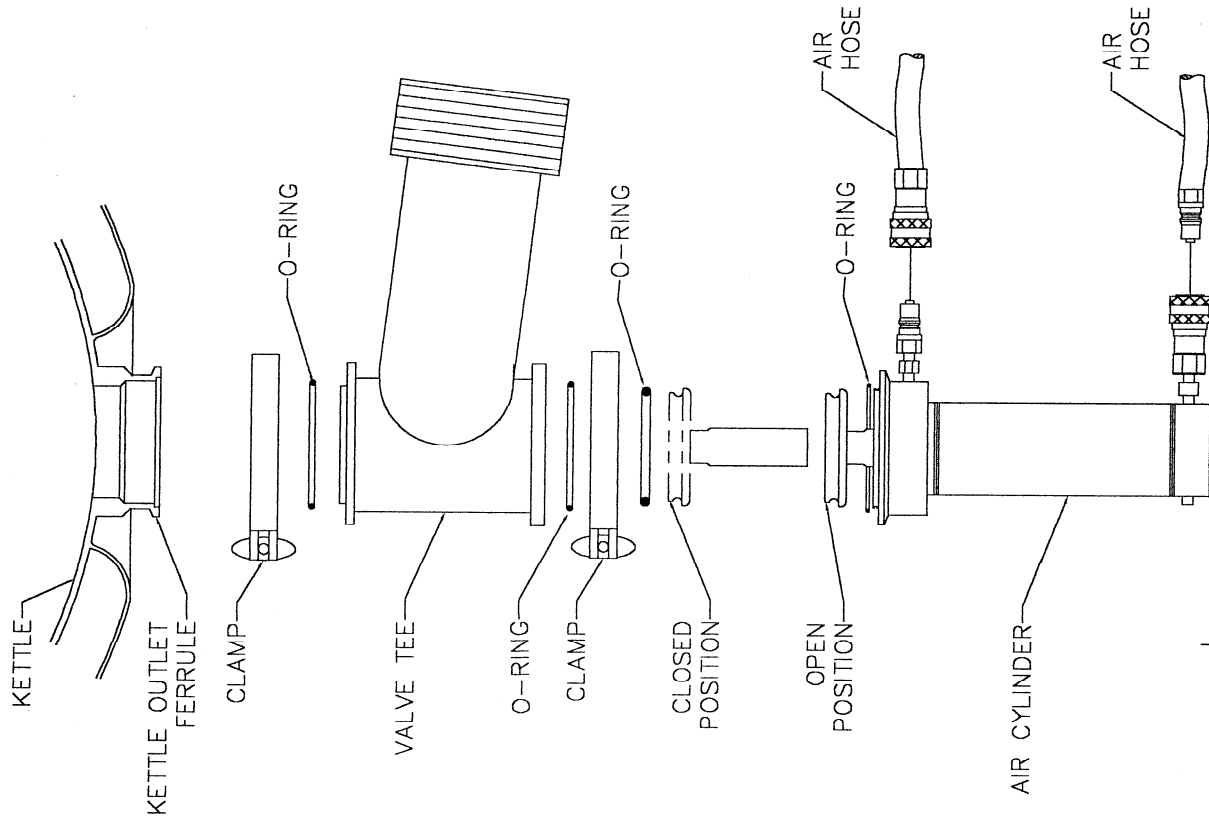
JOB#: _____ QTY: _____

J.C.PARDO & SONS INC.	
CHECKED BY: VAL 4/10/95	APPROVED BY: _____

DRAWN BY: TIM	UNLESS NOTED OTHERWISE TOLERANCES ARE: .XX = ±.01 .XXX = ±.005
DATE: 4/10/95	FRACT. = ±1/32" ANGLE = ±.5° FINISH = 64 RMS
SCALE: NONE	

CLEANING INSTRUCTIONS FOR COLD WATER INJECTOR	
SIZE: B	DRAWING NUMBER: 8574
REV. A	SHEET 1 of 1

This drawing and all information contained therein is the property of J.C. Pardo & Sons Inc., Bato, MD. The drawing and all information contained herein is the property of J.C. Pardo & Sons Inc. It is loaned subject to return and is not to be used directly or indirectly in any way detrimental to J.C. Pardo & Sons.



J.C.PARDO INSTALLATION & CLEANING INSTRUCTION FOR PRODUCT VALVE

- 1.) OPEN PRODUCT VALVE.
- 2.) DISCONNECT AIR HOSES.
- 3.) REMOVE AIR CYLINDER.
- 4.) REMOVE VALVE TEE.
- 5.) REMOVE ALL O-RINGS.
- 6.) CLEAN AIR CYLINDER; DO NOT SUBMERGE IN WATER. WIPE CLEAN AND SANITIZE.
- 7.) CLEAN AND SANITIZE TEE AND O-RINGS.
- 8.) GREASE AND REINSTALL O-RINGS.
- 9.) REINSTALL TEE TO KETTLE OUTLET.
- 10.) REINSTALL AIR CYLINDER TO BOTTOM OF TEE.
- 11.) RECONNECT AIR HOSES.
- 12.) O.K. TO CLOSE VALVE AND CHECK FOR ALIGNMENT.

REV.	DESCRIPTION	DATE
A	ADDED O-RING TO VALVE	3/02

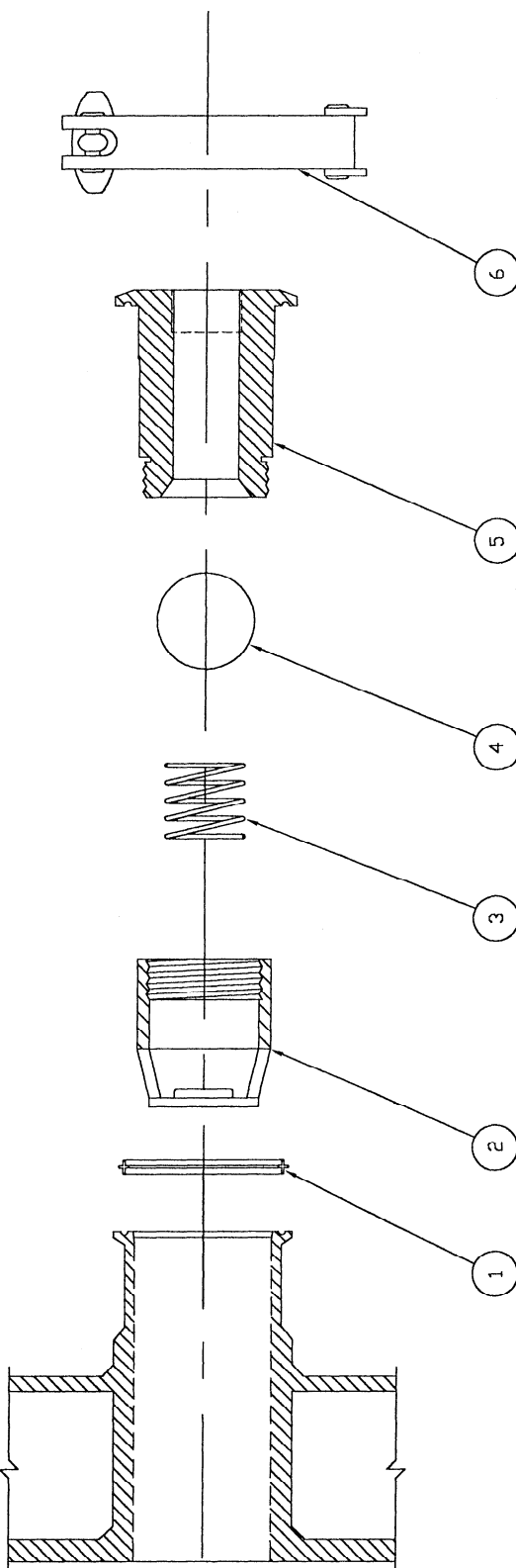
J.C.PARDO & SONS INC.
 1580 REAMES RD. #1220
 BALTO MD. 21220
 PHONE (410) 961-3800
 FAX (410) 381-3800

REVISED BY: NONE
 DATE: 01/01/01
 DRAWING NO: NONE

3" J.C.PARDO PRODUCT VALVE
 CLEANING INSTRUCTION

DRAWINGS FOR REPLACEMENT PARTS

ITEM	DRAWING NO.	DESCRIPTION
1	SEU02-0000001	TRI-CLAMP GASKET
2	IFS02-0000002	RETAINER CAP
3	MSSPRING00013	COIL SPRING
4	MSS01-0000001	BALL
5	IFS02-6300001	INJECTOR BODY
6	DFS02-0C00002	TRI-CLAMP



QTY: _____
JOB #: _____

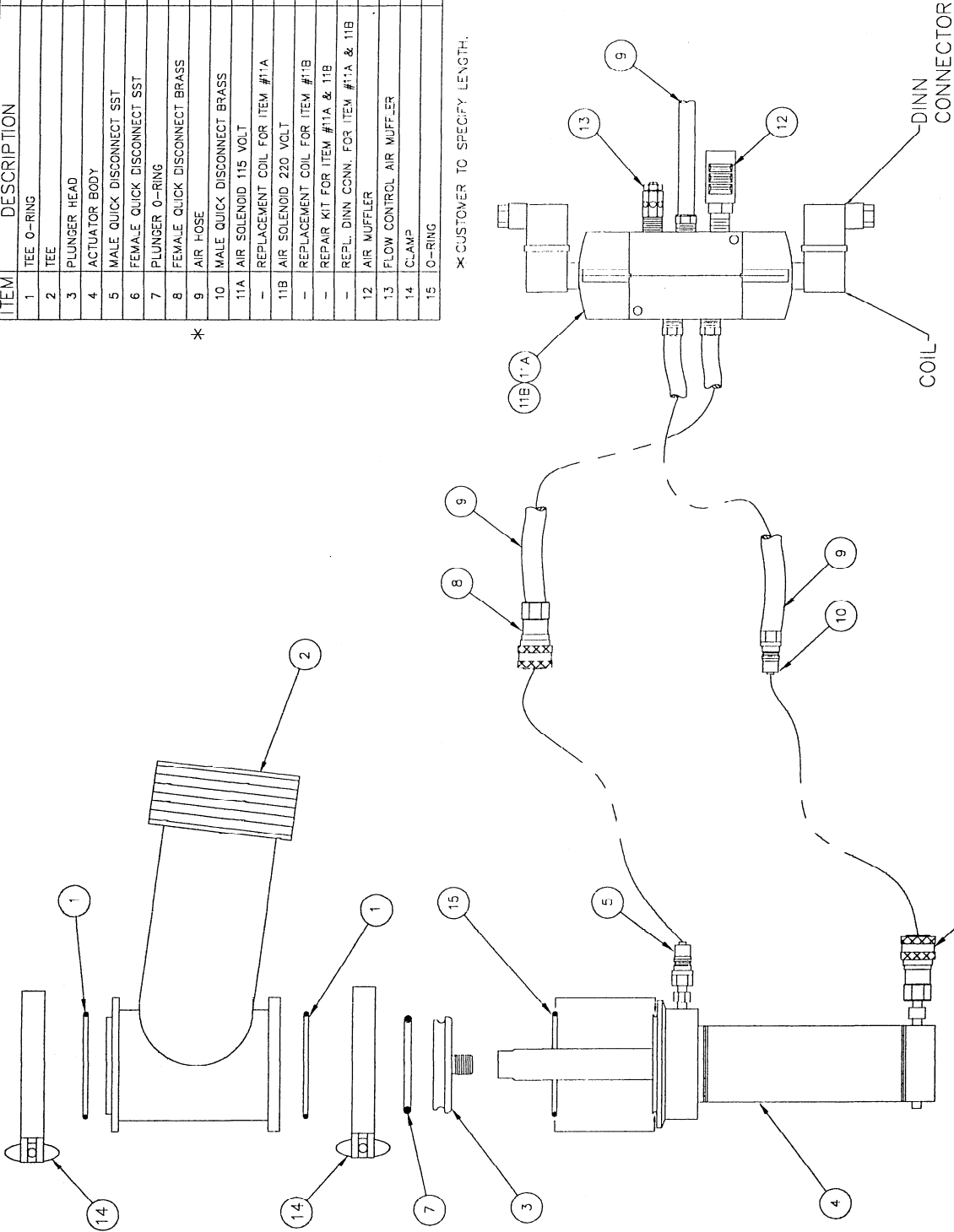
REV. A	REDRAWN IN ACAD	SME 8-27-99	BY	DATE	REVISIONS
					REVISIONS
J.C.PARDO & SONS INC. DESIGNED BY: _____ APPROVED BY: _____			THIS DRAWING IS THE PROPERTY OF J.C.PARDO & SONS INC. IT IS TO BE USED ONLY FOR THE PURPOSES SPECIFIED HEREON. IT IS NOT TO BE REPRODUCED OR TRANSMITTED IN ANY FORM OR BY ANY MEANS, ELECTRONIC OR MECHANICAL, INCLUDING PHOTOCOPYING, RECORDING, OR BY ANY INFORMATION STORAGE AND RETRIEVAL SYSTEM, WITHOUT THE WRITTEN PERMISSION OF J.C.PARDO & SONS INC.		
NAME OF S.M.E. DATE 8-27-99 NONE			UNIT OF MEASURE XX = ± XXX = ± VALUE = ± FINISH =		
REPLACEMENT PARTS COLD WATER INJECTOR			SIZE C 11082		
			SHEET A 1 of 1		

REPLACEMENT PARTS

ITEM	DESCRIPTION	PART NUMBER
1	TEE O-RING	SE3CRING00011
2	TEE	1FS03-0000006
3	PLUNGER HEAD	1FS02-7500014
4	ACTUATOR BODY	ARS03-0000001
5	MALE QUICK DISCONNECT SST	ARS00-1200002
6	FEMALE QUICK DISCONNECT SST	ARS00-1200003
7	PLUNGER O-RING	SE3CRING00012
8	FEMALE QUICK DISCONNECT BRASS	1HB00-1200002
9	AIR HOSE	AR700-2500002
10	MALE QUICK DISCONNECT BRASS	1HB00-1200001
11A	AIR SOLENOID 115 VOLT	ARB00-2500013
-	REPLACE COIL FOR ITEM #11A	SP988-8800027
11B	AIR SOLENOID 220 VOLT	ARB00-2500014
-	REPLACE COIL FOR ITEM #11B	SP988-9900028
-	REPAIR KIT FOR ITEM #11A & 11B	SP999-9900074
-	REPL. DINN CONN. FOR ITEM #11A & 11B	ELP00-0000032
12	AIR MUFFLER	ARP00-2500001
13	FLOW CONTROL AIR MUFFLER	ARB00-2500029
14	CLAMP	DFS03-0000001
15	O-RING	SE3CRING00042

*

*CUSTOMER TO SPECIFY LENGTH.



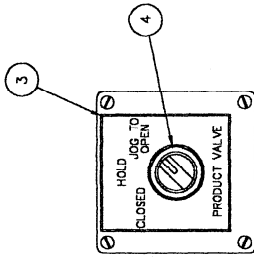
REV.	APPROV. #15	DATE

REVISIONS

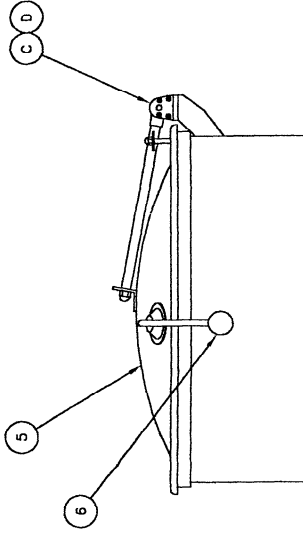
J.C. PARDO & SONS INC.
 1280 REAMES RD. BALTO MD. 21220
 PHONE (410) 381-3800 FAX (410) 381-3800

ORDER #
 DATE 12/5/00
 QUANTITY

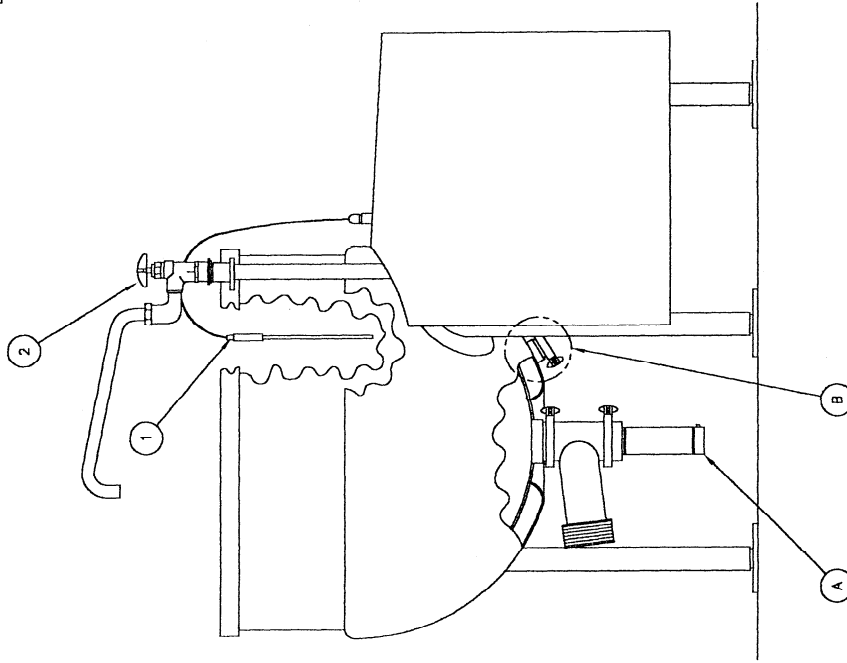
J.C. PARDO PRODUCT VALVE
 REPLACEMENT PARTS DRAWING
 11549
 1 of 1



OPTIONAL PRODUCT VALVE SWITCH DETAIL



OPTIONAL COVER



REV.	DESCRIPTION	BY	DATE
B	CHANGED PROD VALVE SWITCH	TJK	03/02
A	ADDED OPT. COVER & SH 2	LJES	10/22/01

J.C.PARDO & SONS INC.
 1250 REAMES RD.
 BALTO MD. 21620
 PHONE (410) 391-3600
 FAX (410) 391-9042

DESIGNED BY: [blank]
 APPROVED BY: [blank]
 DRAWN BY: LIES
 DATE: 5/31/01
 SCALE: NONE

60-200 PASTA KETTLE W/INJECTOR
 REPLACEMENT PARTS
 IN ORDER TO RETURN TO THE PROPERTY OF J.C.PARDO & SONS INC. THE PURCHASER MUST RETURN THE PARTS TO THE COMPANY WITHIN 30 DAYS OF RECEIPT. THE PURCHASER IS RESPONSIBLE FOR THE COST OF SHIPPING AND HANDLING.

SIZE: C
 DRAWING NUMBER: 11625
 REV: B
 1 of 2

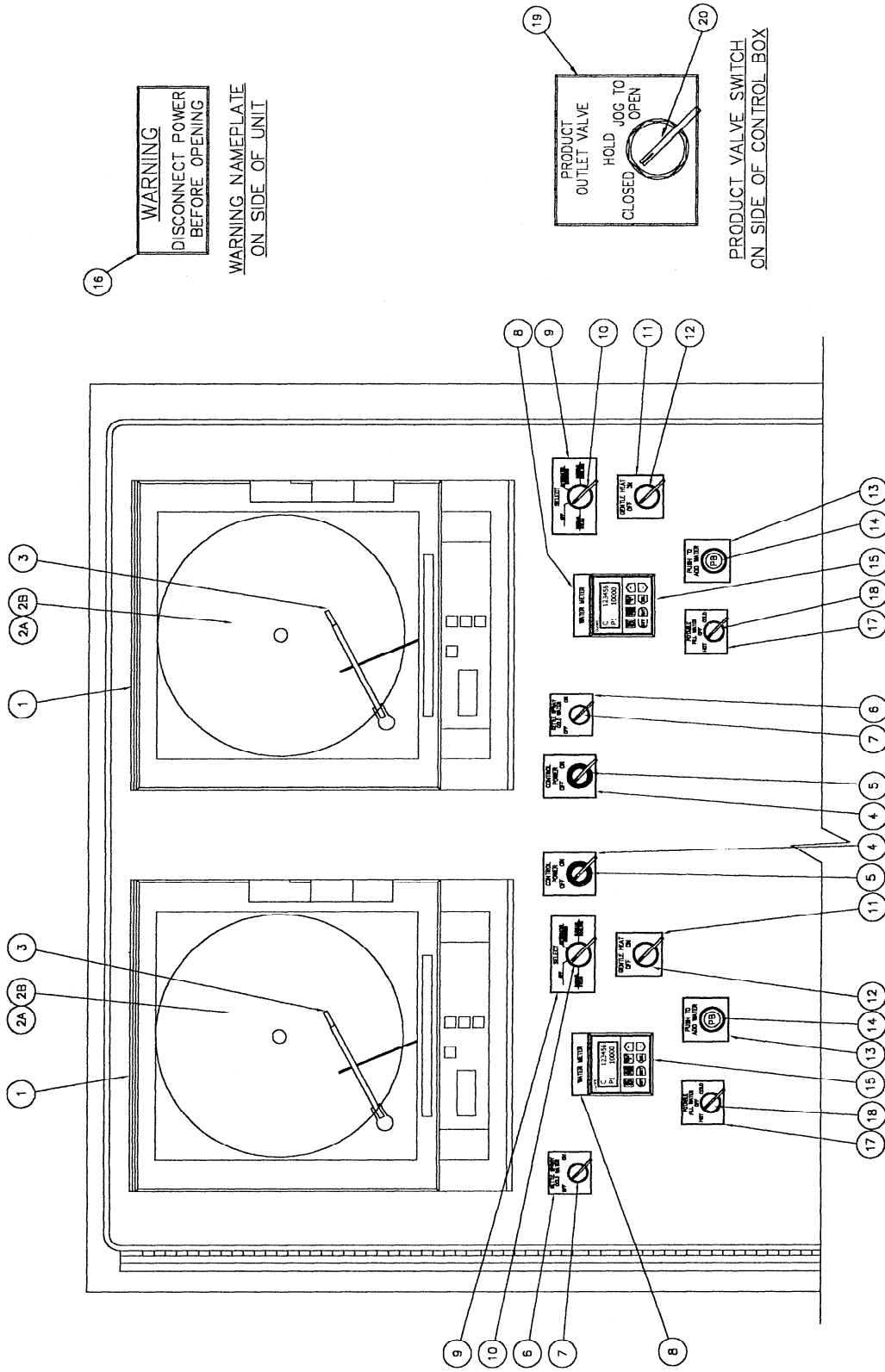
REVISIONS

REPLACEMENT PARTS LIST		
ITEM	PART NO.	DESCRIPTION
1	TSENSOR00012	RTD SENSOR
2	PBB00-7500018	FILL FAUCET
3	NPYELLOW00242	FUNCTION TAG (OPTIONAL)
4	2EP01-25A0022	THREE POSITION TURN SWITCH
5	-----	KETTLE COVER BY KETTLE SIZE (OPTIONAL)
-	1V060GAL00001	60 GALLON KETTLE COVER ASSY.
-	1V100GAL00001	100 GALLON KETTLE COVER ASSY.
-	1V150GAL00001	150 GALLON KETTLE COVER ASSY.
-	1V200GAL00001	200 GALLON KETTLE COVER ASSY.
6	MSP02-0000001	RED BALL (OPTIONAL)

DRAWINGS FOR REPLACEMENT PARTS	
ITEM	DESCRIPTION
A	C-11549 PRODUCT OUTLET VALVE
B	C-11082 WATER INJECTOR (OPTIONAL)
C	B-8539 COVER ACTUATOR 60-100 GAL. (OPTIONAL)
D	B-8415 COVER ACTUATOR 150-200 GAL. (OPTIONAL)

REV. A	CHANGED PROD VLV SWITCH TJK	03/02	DATE	BY	TJK	DATE	03/02	DESCRIPTION	REVISIONS
<p>J.C.PARDO & SONS INC. 1250 REAMES RD. BALTO MD, 21220 PHONE (410) 981-5800 FAX (410) 981-0462</p>									
DESIGNED BY			DRAWN BY			DATE			
APPROVED BY			JES			5/31/01			
SCALE			NONE			TITLE			
			60-200 PASTA KETTLE W/INJECTOR			SHEET			
			REPLACEMENT PARTS			11625			
			REV. A			2 of 2			

THIS DRAWING IS THE PROPERTY OF J.C. PARDO & SONS INC. IT IS TO BE USED ONLY FOR THE MANUFACTURE OF THE EQUIPMENT SPECIFIED HEREON. IT IS NOT TO BE REPRODUCED OR TRANSMITTED IN ANY FORM OR BY ANY MEANS, ELECTRONIC OR MECHANICAL, INCLUDING PHOTOCOPYING, RECORDING, OR BY ANY INFORMATION STORAGE AND RETRIEVAL SYSTEM.



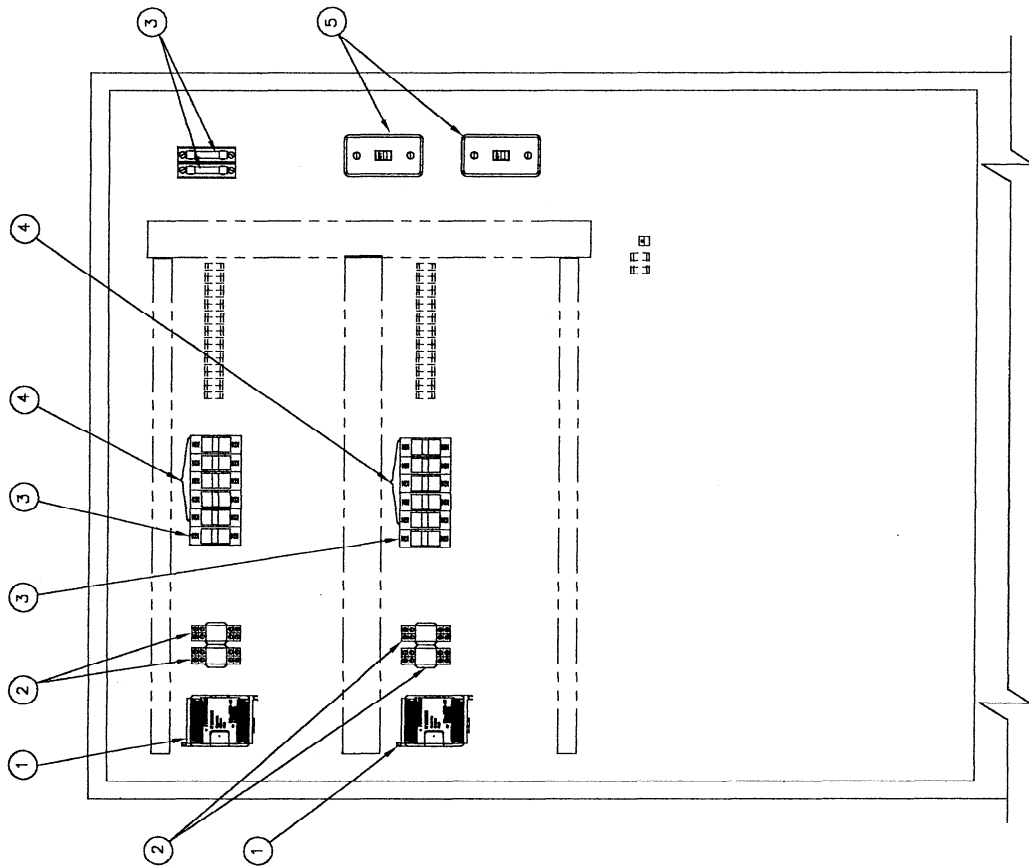
REV.	DESCRIPTION	BY	DATE	ORDERED BY	APPROVED BY	DATE	REV.	CHANGING NUMBER
	REVISIONS			J.C. PARDO & SONS INC.			C	11650
				1260 REAMES RD.				
				BALTO MD. 21220				
				PHONE (410) 391-3600				
				FAX (410) 391-9642				
				DUAL PASTA KET-FL MNTD CONTROL PANEL				
				REPLACEMENT PARTS (WHOLE FOODS ONLY)				
				DATE: 3/13/02				
				REASON: NONE				
				REV. 1				
				OF 2				

REPLACEMENT PARTS	
ITEM	DESCRIPTION
1	PARTLOW 8000
-	REPLACEMENT PEN MOTOR ITEM #1
-	REPLACEMENT CHART MOTOR ITEM #1
-	REPLACEMENT TOUCH PAD COVER
-	REPLACEMENT DOOR FOR ITEM #1
-	REPLACEMENT DOOR WINDOW ITEM #1
2A	24 HOUR CHART PAPER 'F'
2B	24 HOUR CHART PAPER 'C'
3	RED REPLACEMENT PEN
4	NAMEPLATE
5	RED LIGHTED TURN SWITCH
-	REPLACEMENT BULB FOR ITEM #5
6	NAMEPLATE
7	TWO POSITION SWITCH
8	NAMEPLATE
9	NAMEPLATE
10	FOUR POSITION SWITCH
11	NAMEPLATE
12	TWO POSITION SWITCH
13	NAMEPLATE
14	BLACK PUSH BUTTON
15	DIGITAL DURANT WATER COUNTER
-	REPLACEMENT .315A FUSE ITEM #15
16	NAMEPLATE WARNING
17	NAMEPLATE
18	THREE POSITION SWITCH
19	NAMEPLATE
20	THREE POSITION SWITCH

REV.	DESCRIPTION	BY	DATE
	REVISIONS		
J.C. PARDO & SONS INC. 1250 REAMES RD. BALTO MD. 21220 PHONE (410) 381-3600 FAX (410) 381-8048		CHECKED BY: DATE: 3/13/02 APPROVED BY: NAME: NONE	DUAL PASTA KET. FL. MNTD. CONTROL PANEL REPLACEMENT PARTS (WHOLE FOODS ONLY) C 11650 SHEET 2 of 2

UNIVERSAL REPLACEMENT PARTS

ITEM	PART NO.	DESCRIPTION
1	EL8CO-0000046	PROGRAMMABLE CONTROLLER
2	ELPSW-0000002	RELAY
3	ELPSW-0000003	REPLACEMENT BASE FOR ITEM #2
4	ELV02-5000001	5 AMP FUSE
5	ELV02-5000002	1 AMP FUSE
6	ELPSW-0000007	LOW VOLTAGE DISCONNECT



J.C. PARDO & SONS INC.
 1250 REARNS RD. BALTO MD. 21220
 PHONE (410) 381-3600 FAX (410) 381-8046

INTERNAL DUAL CONTROL PANEL 120V
 PASTA KETTLE

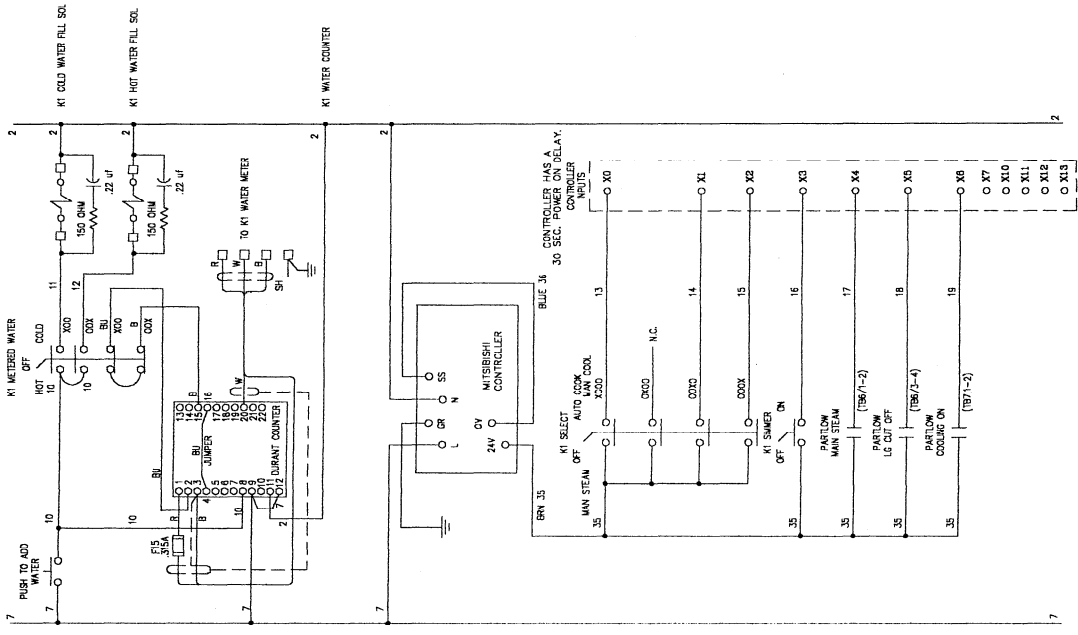
REVISIONS

REV.	DESCRIPTION	BY	DATE
1			

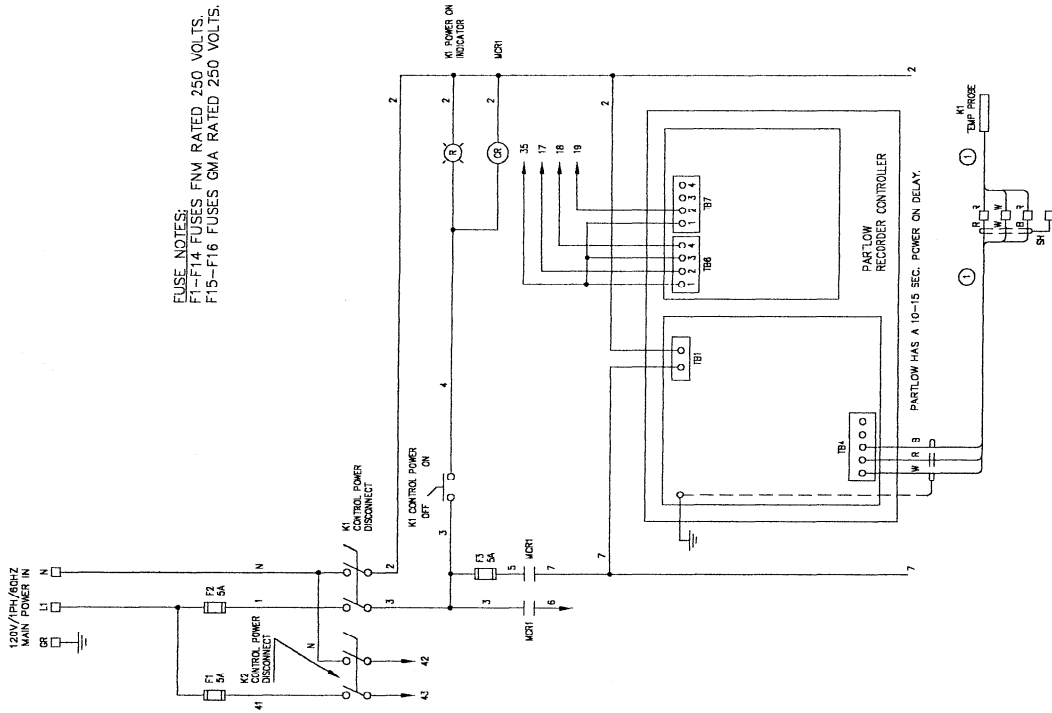
DESIGNED BY: [blank]
 APPROVED BY: [blank]
 DATE: 3/12/02
 REASON: NONE

ITEM NUMBER: 11651
 REV: C
 SHEET: 1 of 1

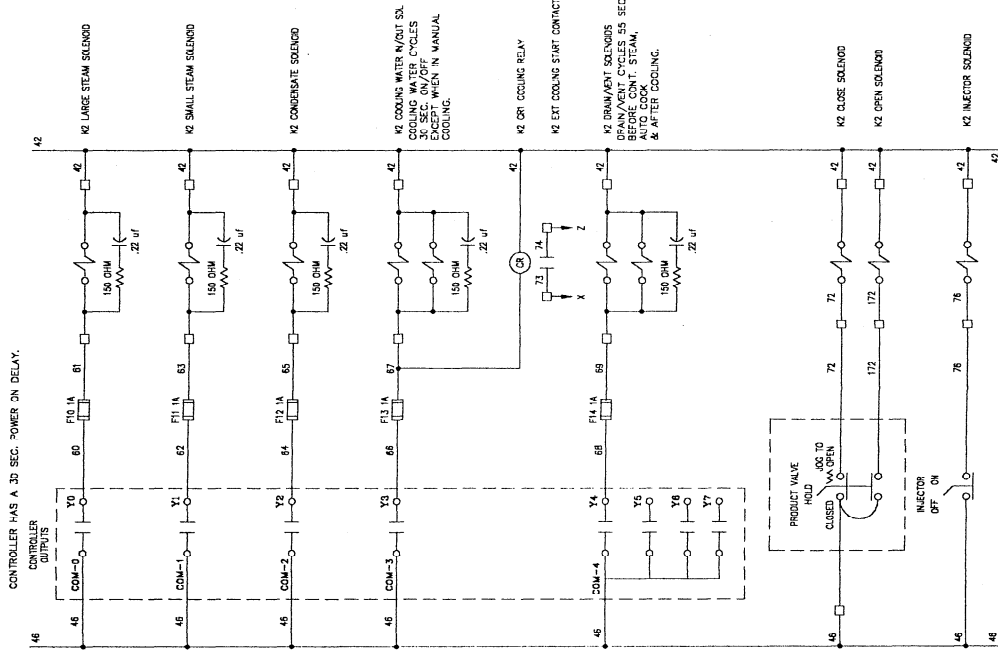
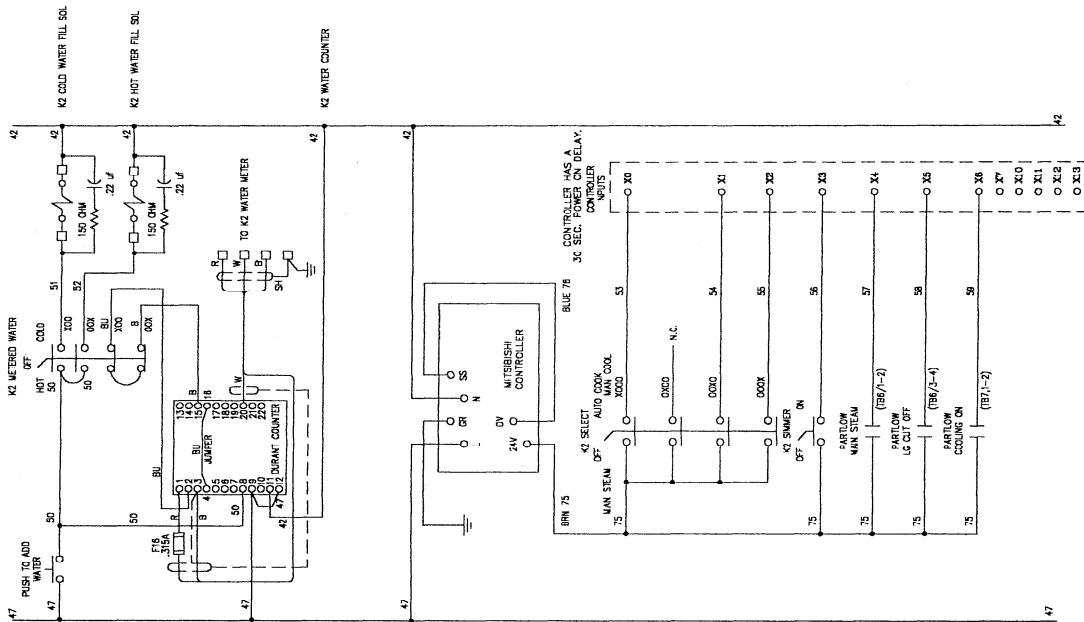
This drawing and all information contained therein is the property of J.C. Pardo & Sons Inc. It shall be confidential, and its use without the express written consent of J.C. Pardo & Sons Inc. is prohibited. It is to be used only for the purpose of manufacturing or repairing the product shown.



FUSE NOTES:
 F1-F14 FUSES FNV RATED 250 VOLTS.
 F15-F16 FUSES GMA RATED 250 VOLTS.



REV	DESCRIPTION	BY	DATE	REVISIONS
J.C. PARDO & SONS INC. 1250 REAMES RD. BALTO MD. 21220 PHONE (410) 391-3600 FAX (410) 391-9048				DRAWN BY: JES DATE: 12/27/01 SCALE: NONE
ELECTRICAL SCHEMATIC 120V HOT/COLD DUAL PASTA CONTROL PANEL				DRAWING NUMBER: ES-0243 SHEET 1 of 4



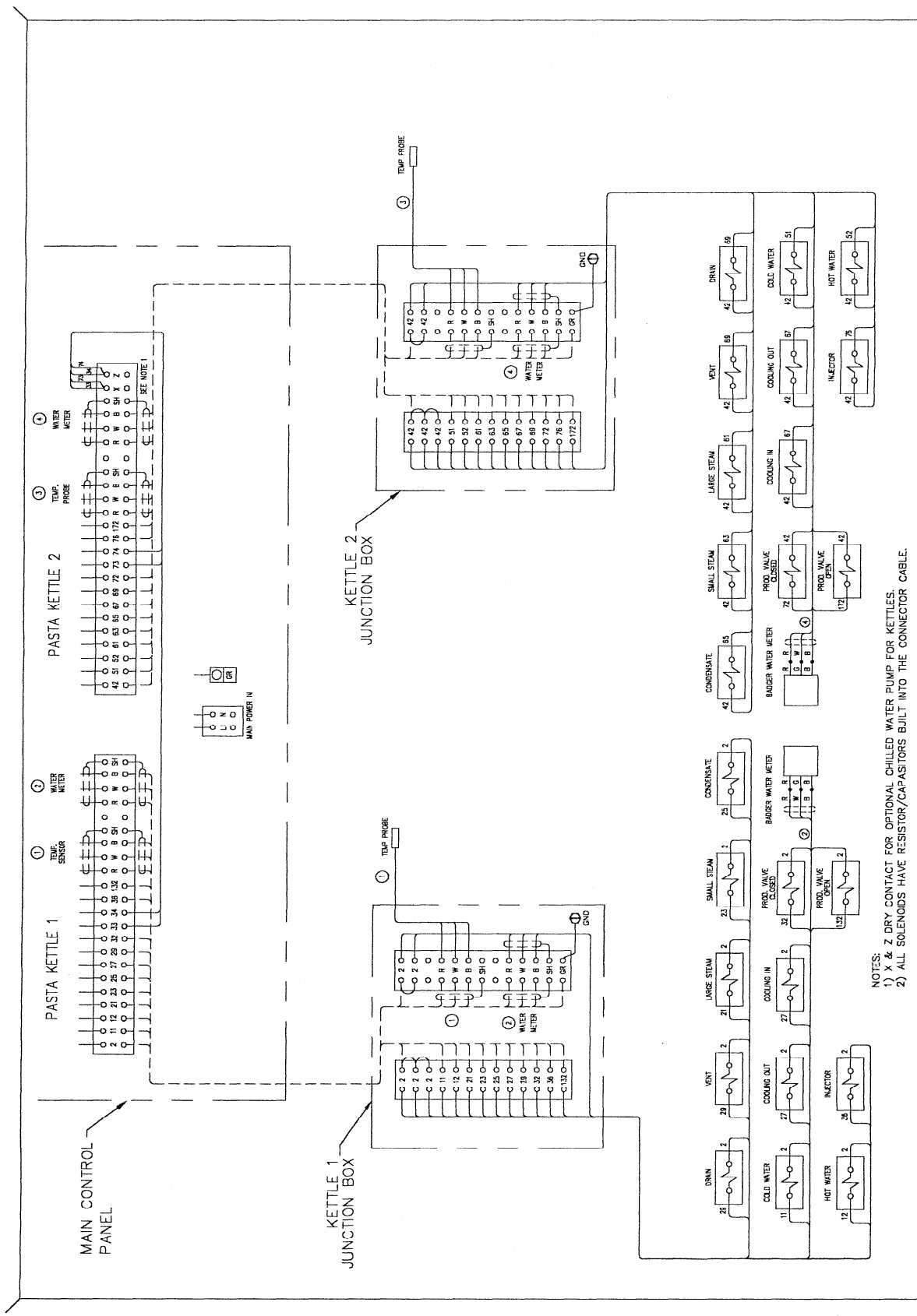
J.C. PARDO & SONS INC.
 1253 REAMERS RD. BALTO MD. 21220
 PHONE (410) 391-9800 FAX (410) 391-9042

ELECTRICAL SCHEMATIC 120V HOT/COLD DUAL PASTA CONTROL PANEL

DRAWN BY: JES
 DATE: 12/27/01
 SCALE: NONE

REV.	DESCRIPTION	BY	DATE
	REVISIONS		

SIZE: C
 DRAWING NUMBER: ES-0243
 SHEET: 3 of 4



REV.	DESCRIPTION	BY	DATE
	REVISIONS		

J.C. PARDO & SONS INC. 1250 REAMERS RD. BALTO MD. 21220 PHONE (410) 391-9800 FAX (410) 391-9042		CHECKED BY: _____ DATE: 12/27/01 APPROVED BY: _____ SCALE: NONE	DRAWN BY: JES DATE: 12/27/01 SCALE: NONE
ELECTRICAL SCHEMATIC 120V HOT/COLD DUAL PASTA CONTROL PANEL			
REV. C	SIZE C	DRAWING NUMBER ES-0243	SHEET 4 of 4

NOTES:
 1) X & Z DRY CONTACT FOR OPTIONAL CHILLED WATER PUMP FOR KETTLES.
 2) ALL SOLENOIDS HAVE RESISTOR/CAPACITORS BUILT INTO THE CONNECTOR CABLE.

This drawing and all information contained therein is the property of J.C. Pardo & Sons Inc. and is to be used only for the specific purpose for which it was prepared. It is not to be reproduced, copied, or transmitted in any way without the written consent of J.C. Pardo & Sons Inc.