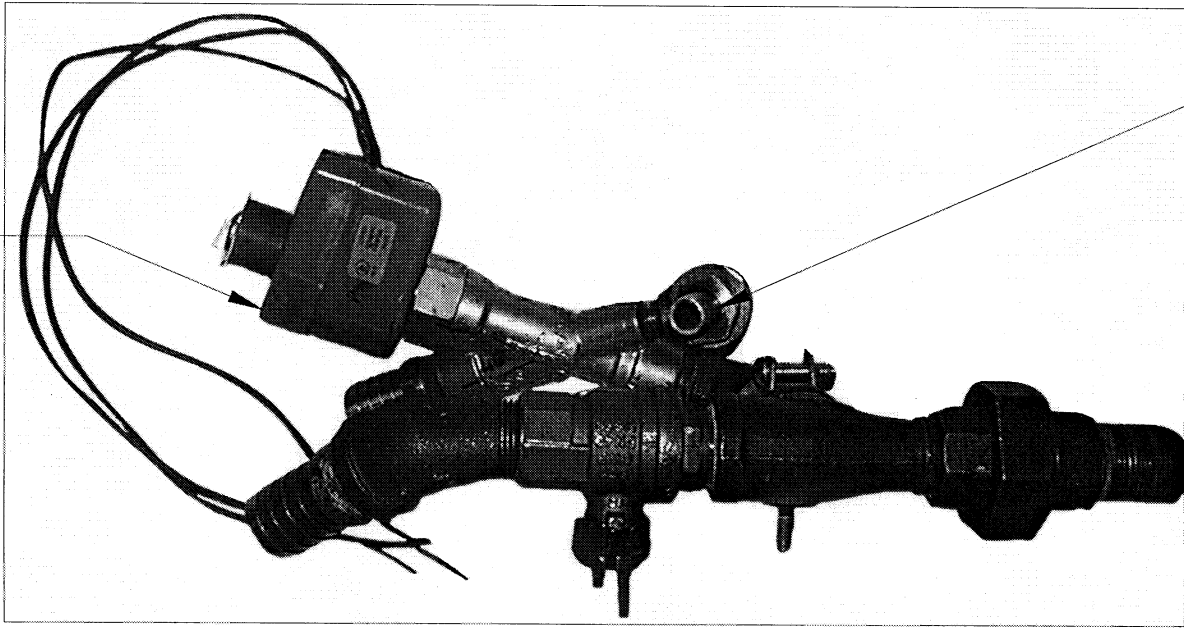


INSTALL NIPPLE AND HALF OF UNION IN OPEN PORT ON THE GENERATOR – REFER TO SHEET 6 FOR ORIENTATION OF VALVE ASSEMBLY

**Kit part number
109662**



CONNECT GENERATOR WATER FEED HOSE HERE (INSTRUCTION 10)

FIG. NO. 22221

ITEM	QTY	PART NO.	DESCRIP
TOLERANCES (EXCEPT AS NOTED)			CLEVELAND RANG 1333 East 179th St. Cleveland, Ohio
DECIMAL ± N/A	SCALE N/A	DRAWN BY YA	TITLE DRAIN VALVE CONVEI STEAMCRAFT POWER
DATE 10-01-99	DRAWING NO. D- 260 ATA		