

# Maintenance Procedures & Parts Lists

T1 Electric Braising Pan  
*For units after October 2013*

SEL-30-T1  
SEL-40-T1



*For your future reference.*

Model # \_\_\_\_\_

Serial # \_\_\_\_\_

← Model #, Serial # & Rating Label.

 **Cleveland**

1333 East 179th St., Cleveland, Ohio, U.S.A. 44110  
Ph: 216.481.4900 Fx: 216.481.3782  
[www.clevelandrange.com](http://www.clevelandrange.com)



***Read the manual thoroughly.  
Improper installation, operation or  
maintenance can cause property damage,  
injury or death.***

*This manual is to be used in conjunction with the  
“Operators Manual”. See “Operators Manual” for  
safety warnings, correct operation, installation  
and preventative maintenance.*



# **STATEMENT OF RESPONSIBILITIES / DÉCLARATION DES RESPONSABILITÉS / DECLARACIÓN DE RESPONSABILIDADES**

This document is for use by experienced and trained Qualified Cleveland Range, LLC Authorized Service Representatives who are familiar with both the safety procedures, and equipment they service. Cleveland Range, LLC assumes no liability for any death, injury, equipment damage, or property damage resulting from use of, improper use of, or failure to use the information contained in this document. Cleveland Range, LLC has made every effort to provide accurate information in this document, but cannot guarantee that this document does not contain unintentional errors and omissions.

The information in this document may be subject to technical and technological changes, revisions, or updates. Cleveland Range, LLC assumes no liability or responsibility regarding errata, changes, revisions, or updates.

Qualified Cleveland Range, LLC Authorized Service Representatives are obligated to follow industry standard safety procedures, including, but not limited to, OSHA regulations, and disconnect / lock out / tag out procedures for all utilities including steam, and disconnect / lock out / tag out procedures for gas, electric, and steam powered equipment and / or appliances.

All utilities (gas, electric, water and steam) should be turned OFF to the equipment and locked out of operation according to OSHA approved practices during any servicing of Cleveland Range equipment

Qualified Cleveland Range, LLC Authorized Service Representatives are obligated to maintain up-to-date knowledge, skills, materials and equipment.

Ce document est destiné à l'usage des Représentants de Service qualifiés et autorisés de Cleveland Range, LLC qui possèdent l'expérience et la formation ainsi que la bonne connaissance des mesures de sécurité et du matériel qu'ils entretiennent.

Cleveland Range, LLC décline toute responsabilité pour tout cas de décès, blessure, dommage matériel ou dommage aux biens résultant de l'utilisation, de la mauvaise utilisation ou du manquement d'utilisation des renseignements contenus dans ce document.

Cleveland Range, LLC s'est efforcé à fournir des renseignements précis dans ce document mais ne peut garantir que ce document soit exempt d'erreurs et d'omissions non intentionnelles.

Les renseignements contenus dans ce document peuvent être assujettis à des changements techniques et technologiques, des révisions ou des mises à jour.

Cleveland Range, LLC décline toute obligation ou responsabilité concernant les errata, modifications, révisions ou mises à jour.

Les Représentants de Service qualifiés et autorisés de Cleveland Range, LLC sont tenus de se conformer aux mesures de sécurité normalisées de l'industrie, y compris, mais sans s'y limiter, les réglementations de l'OSHA, les procédures de débranchement / verrouillage / étiquetage relatives à tous les services publics, dont l'approvisionnement en vapeur, et les procédures de débranchement / verrouillage / étiquetage relatives aux équipements et/ou appareils fonctionnant au gaz, à l'électricité et à la vapeur.

Au cours de tout entretien d'un appareil Cleveland Range, tous les services publics (gaz, électricité, eau et vapeur) doivent être FERMÉS au niveau de l'appareil et le dispositif de fonctionnement doit être verrouillé suivant les pratiques approuvées de l'OSHA.

Les Représentants de Service qualifiés et autorisés de Cleveland Range, LLC sont tenus d'actualiser en permanence leurs connaissances, compétences, matériel et équipement.

Este documento está destinado para el uso de los Representantes de Servicio calificados y autorizados de Cleveland Range, LLC quienes cuentan con la experiencia y la capacitación así como el buen conocimiento de las medidas de seguridad y de los equipos que mantienen.

Cleveland Range, LLC, declina toda responsabilidad en caso de cualquier fallamiento, lesiones, daños al equipo o daños a la propiedad resultantes de la utilización, del uso indebido o de la falta de utilización de la información provista en este documento.

Cleveland Range, LLC se ha esforzado en suministrar información precisa en este documento, pero no puede garantizar que este documento esté exento de errores y de omisiones no intencionales.

La información contenida en este documento podría estar sujeta a cambios técnicos o tecnológicos, revisiones o actualizaciones. Cleveland Range, LLC declina toda obligación o responsabilidad con respecto a erratas, modificaciones, revisiones o actualizaciones.

Los Representantes de Servicio calificados y autorizados de Cleveland Range, LLC tienen la obligación de seguir los procedimientos estándar de seguridad de la industria; los cuales incluyen pero no se limitan a los reglamentos de la OSHA (La Administración de la Seguridad y Salud Ocupacionales), los procedimientos de desconexión, cierre y etiquetado relativos a todos los servicios públicos incluyendo el suministro de vapor y los procedimientos de desconexión, cierre y etiquetado para los equipos y/o aparatos que funcionan a base de gas, electricidad o vapor.

Cuando se esté dando servicio o mantenimiento a un aparato de Cleveland Range, todos los servicios públicos (gas, electricidad, agua y vapor) deben estar APAGADOS para el equipo en cuestión y se debe seguir el procedimiento de cierre de operaciones de acuerdo con las prácticas aprobadas por la OSHA.

Los Representantes de Servicio calificados y autorizados de Cleveland Range, LLC tienen la obligación de actualizar constantemente sus conocimientos, destrezas, materiales y equipamiento.

# TROUBLESHOOTING AND MAINTENANCE PROCEDURES

*The following trouble shooting guide and maintenance procedures are meant to be used by Qualified Service Technician*



For periodic maintenance recommendations see “Operators Manual”.

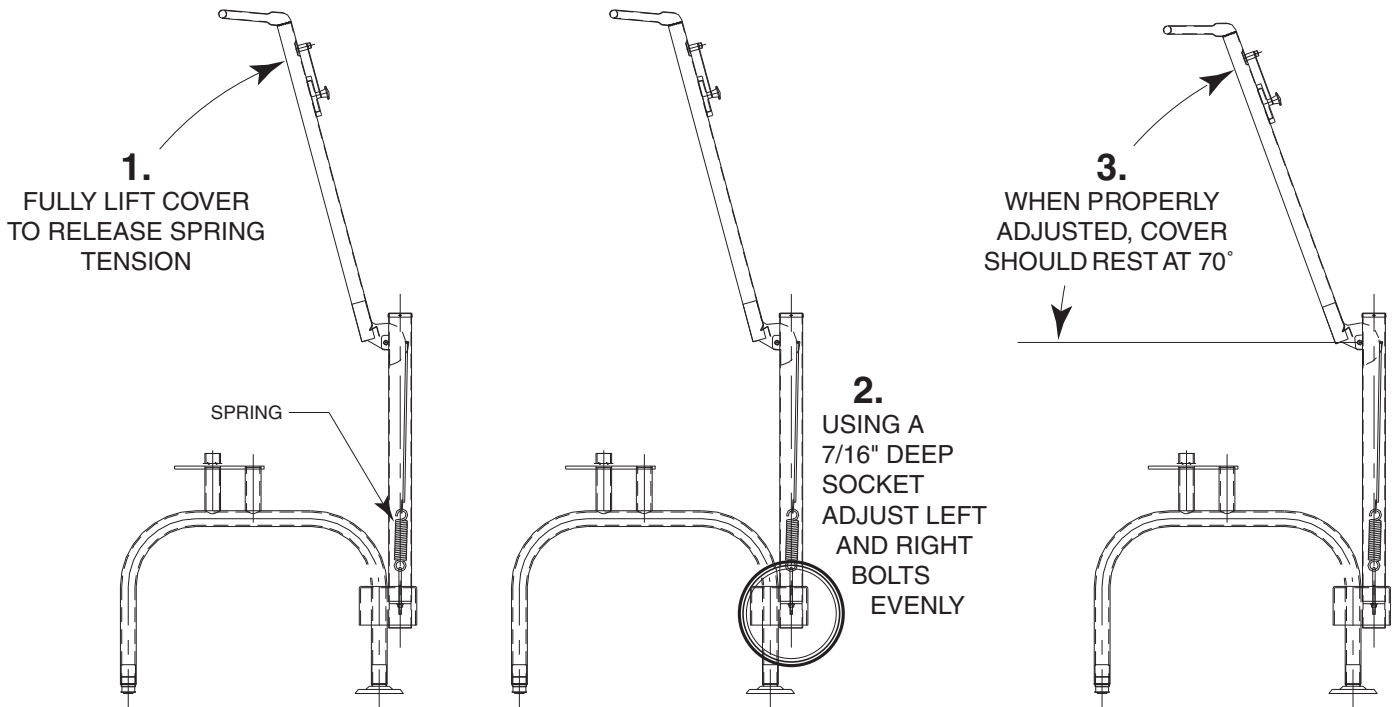
---

## SEQUENCE OF OPERATIONS

When using these instructions refer to the SEL-TI wiring schematic.

1. Supply Voltage is sent to the primary of the 120 VAC transformer.
2. 120 VAC is sent to the normally open contacts of the Heat Contactors, C1 and C2.
3. 120 VAC is sent from the secondary of the 120VAC transformer through the 3 amp fuse to
  - The primary of the 24 VAC transformer
    - 24 VAC is sent from the secondary of the 24VAC transformer through the 1.25 or 1.5 amp fuse to the on/off switch.
  - Contacts of the R1 Heat Relay
4. 120 VAC is sent from the secondary of the 120 VAC transformer to the optional Power Tilt Circuit (See step 9).
5. With the On/Off switch in the On position.
  - 24 VAC is sent through the normally closed high limit switch to the mercury switch.
  - If the skillet is in the down position then 24 VAC is sent through mercury switch to pin 9 on the thermostat.
6. If the skillet is calling for heat the 24 VAC is sent from pin number 10 to RI Heat Relay.
  - The normally open contacts of the Heat relay close sending 120 VAC to the Heat contactor coils C 1 and C2.
7. The Contactor close and supply Voltage is sent to the elements.
  - The elements heat until the thermostat is satisfied.
8. When thermostat is satisfied, 24 VAC is removed from pin 10 on the thermostat and the heat circuit is de-energized.
9. If the skillet has the Power Tilt option and is in the down position, 120 VAC is sent from the secondary of the 120 VAC transformer through the circuit breaker and the up limit switch to the tilt switch.

# HINGE ADJUSTMENT INSTRUCTIONS



## SPARE PARTS LIST

PART NO.	DESCRIPTION	QTY.			
<b>HEATING ELEMENTS</b>					
<i>30 GALLON</i>					
SK50845-1	ELEMENT, 2.00 KW, 480 VAC				
SK50845-2	ELEMENT, 2.67 KW, 416 VAC				
SK50845-3	ELEMENT, 2.00 KW, 416 VAC				
SK50845-4	ELEMENT, 2.67 KW, 240 VAC				
	ELEMENT, 2.00 KW, 208 VAC				
SK50845-5	ELEMENT, 2.00 KW, 240 VAC				
SK50845-6	ELEMENT, 2.67 KW, 208 VAC				
SK50845-8	ELEMENT, 2.67 KW, 480 VAC				
<i>40 GALLON</i>					
SK50861-1	ELEMENT, 4.00 KW, 480 VAC				
SK50861-2	ELEMENT, 3.00 KW, 480 VAC				
SK50861-3	ELEMENT, 4.00 KW, 416 VAC				
SK50861-4	ELEMENT, 3.00 KW, 416 VAC				
SK50861-5	ELEMENT, 4.00 KW, 240 VAC				
	ELEMENT, 3.00 KW, 208 VAC				
SK50861-6	ELEMENT, 3.00 KW, 240 VAC				
SK50861-7	ELEMENT, 4.00 KW, 208 VAC				
SK2474500	SWTCH, TILT LIMIT	1			
SK50933-1	SENSOR	1			
KE55069-7	SAFETY THERMOSTAT	1			
SK2475500	RELAY	1			
KE603902-7-8	CONTACTOR	2			
KE53838-10	TRANSFORMER, 208-240V, 480V	1			
KE53838-11	TRANSFORMER, 380-415V	1			
KE53838-25	TRANSFORMER, 120V	1			
KE53838-35	TRANSFORMER, 120V	1			
KE52936-8	FUSE, 1.25 AMP, 250V	1			
KE52936-14	FUSE, 3 AMP, 600V	1			
KE52936-16	FUSE, 1.5 AMP, 600V	1			
KE52936-20	FUSE, 3 AMP, 250V	1			
SK2498399	POTENTIOMETER SHAFT ASSEMBLY	1			
	<i>INCLUDES:</i>				
SK2166800	POTENTIOMETER SHAFT	1			
SK2167000	TENSION PIN	1			
SK2167100	WASHER, BOWED/SPRING	1			
SK2167200	RETAINING RING, SP-NR #R1000-25	1			
SK2167300	PANEL BEARING	1			
SK2382800	RETAINING RING CLIP	1			
SK50905-1	HEAT INDICATOR, 28V	1			
SK2142002	TEMPERATURE SENSOR BOARD	1			
SK2474103	SWITCH, POWER ON/OFF	1			
SK2474104	SWITCH, POWER ON/OFF/ON, CE	1			
<b>POWER TILT ONLY</b>					
KE003209-11	TILT SWITCH, ON/OFF/ON	1			
KE603208-7	CONTACT SECTION HOLDER (LATCH)	1			
KE603208-9	CONTACT BLOCK	4			
KE50579-2	CIRCUIT BREAKER	1			
FA05002-34	"O" RING, CIRCUIT BREAKER	1			
KE602984	WATER RESISTANT BOOT	1			



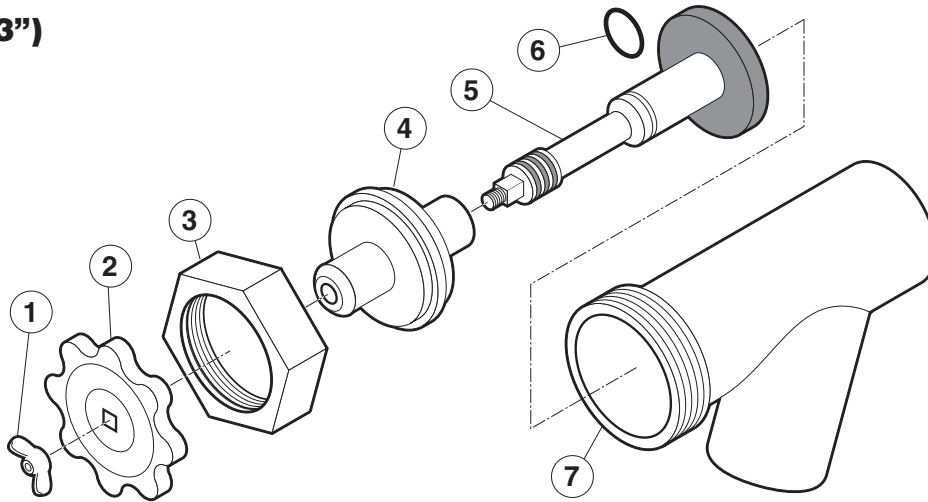
# SERVICE PARTS

## WARRANTY

Our Company supports a worldwide network of Maintenance and Repair Centers. Contact your nearest Maintenance and Repair Centre for replacement parts, service, or information regarding the proper maintenance and repair of your cooking equipment.

In order to preserve the various agency safety certification (UL, NSF, ASME/Ntl. Bd., etc.), only factory-supplied replacement parts should be used. The use of other than factory supplied replacement parts will void warranty.

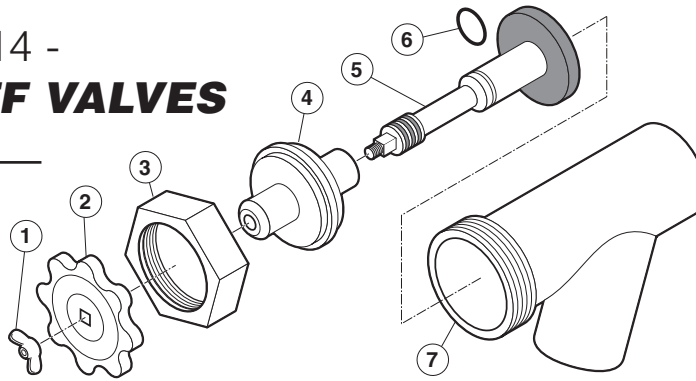
## PRIOR TO NOVEMBER, 2014 - TANGENT DRAW-OFF VALVES (1.5, 2" & 3")



ITEM NO.	PART NO.	DESCRIPTION	QTY.
1. - 7.	KE50219	1.5" DRAW-OFF ASSEMBLY	.1
	KE50972-B	2" DRAW-OFF ASSEMBLY	.1
	KE50973	3" DRAW-OFF ASSEMBLY	.1
1.	SE50019	WING NUT, TD-1.5	.1
	FA95049	WING NUT, TD-2	.1
	FA21501-2	ACCORN NUT, TD-2	.1
	FA21501-1	ACCORN NUT, TD-3	.1
2.	SE50017	KNOB, TD-1.5	.1
	KE52755	KNOB, TD-2	.1
	SE50018	KNOB, TD-3	.1
3.	FI05180-3	HEX NUT, TD-1.5	.1
	FI05180-1	HEX NUT, TD-2	.1
	FI05180-2	HEX NUT, TD-3	.1
4.	SE50011	RETAINER, TD-1.5	.1
	KE52753	RETAINER, TD-2	.1
	SE50013	RETAINER, TD-3	.1
5.	SE50008	PISTON, TD-1.5	.1
	KE52752	PISTON, TD-2	.1
	SE50010	PISTON, TD-3	.1
	KE53290-1	PISTON, TD-3 (CORRECTIONAL PACKAGE)	.1
6.	FA05002-24	"O" RING, TD-1.5	.1
	FA05002-24	"O" RING, BUNA-N (A-111), TD-2	.1
	FA05002-38	"O" RING, TD-3	.1
7.	SE50005	VALVE BODY, TD-1.5	.1
	KE50972-B	VALVE BODY, TD-2	.1
	KE50973	VALVE BODY, TD-3	.1

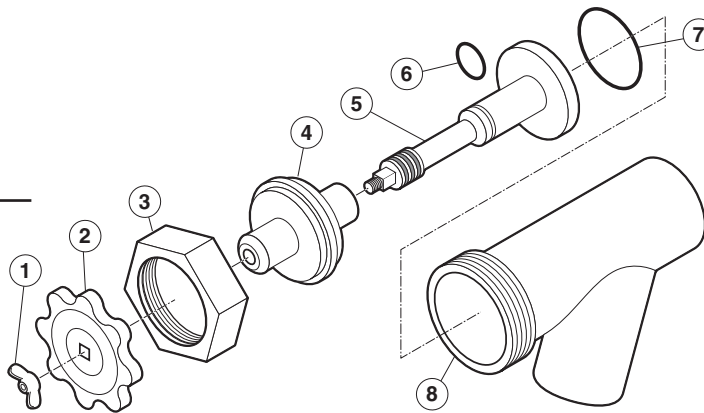
AFTER NOVEMBER, 2014 -  
**TANGENT DRAW-OFF VALVES**

**1.5" & 3" TANGENT  
 DRAW-OFF VALVE**



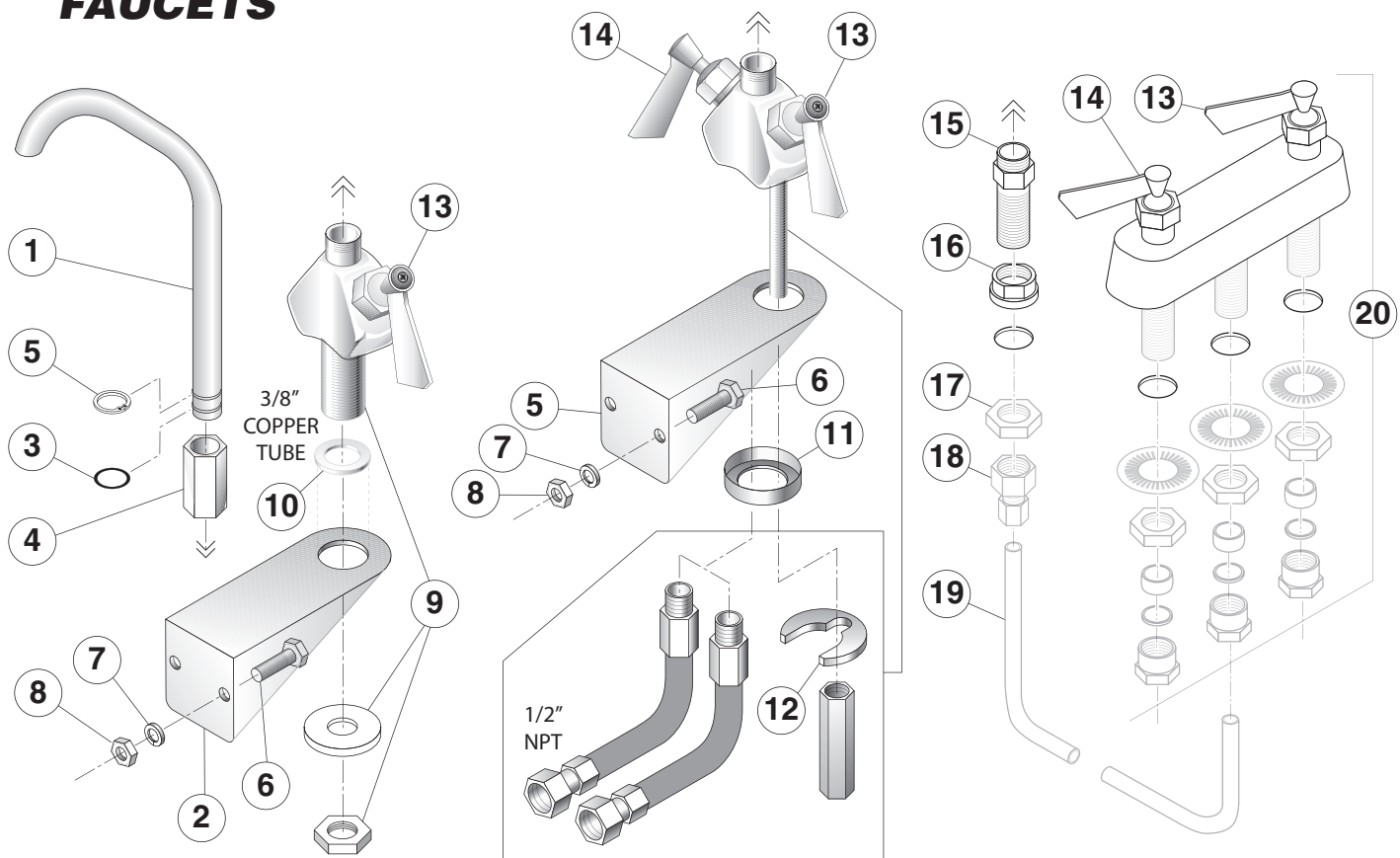
ITEM NO.	PART NO.	DESCRIPTION	QTY.
1. - 7.	KE50219	1.5" DRAW-OFF ASSEMBLY	1
	KE50973	3" DRAW-OFF ASSEMBLY	1
1.	SE50019	WING NUT, TD-1.5	1
	FA21501-1	ACCORN NUT, TD-3	1
	FA11511-1	SCREW (CORRECTIONAL PACKAGE)	1
	FA30505-1	WASHER (CORRECTIONAL PACKAGE)	1
2.	SE50017	KNOB, TD-1.5	1
	SE50018	KNOB, TD-3	1
3.	FI05180-3	HEX NUT, TD-1.5	1
	FI05180-2	HEX NUT, TD-3	1
4.	SE50011	RETAINER, TD-1.5	1
	SE50013	RETAINER, TD-3	1
5.	SE50008	PISTON, TD-1.5	1
	SE50010-1	PISTON, TD-3	1
	KE53290-4	PISTON, TD-3, MODIFIED (CORRECTIONAL PACKAGE)	1
6.	FA05002-24	"O" RING, TD-1.5	1
	FA05002-38	"O" RING, TD-3	1
7.	SE50005	VALVE BODY, TD-1.5	1
	KE50973	VALVE BODY, TD-3	1

**2" TANGENT DRAW-OFF  
 VALVE**



ITEM NO.	PART NO.	DESCRIPTION	QTY.
1. - 7.	KE50972-B	2" DRAW-OFF ASSEMBLY	1
1.	FA95049	WING NUT, TD-2	1
	FA511511-5	SCREW, TD-2 (CORRECTIONAL PACKAGE)	1
2.	KE52755	KNOB, TD-2	1
3.	FI05180-1	HEX NUT, TD-2	1
4.	KE52753	RETAINER, TD-2	1
5.	KE52752-1	PISTON, TD-2	1
	KE53290-3	PISTON, TD-2 (CORRECTIONAL PACKAGE)	1
6.	FA05002-24	"O" RING, BUNA-N (A-111), TD-2	1
7.	FA05002-55	"O" RING, VITON (AS568A-322), TD-2	1
8.	KE52751	VALVE BODY, TD-2	1

# FAUCETS



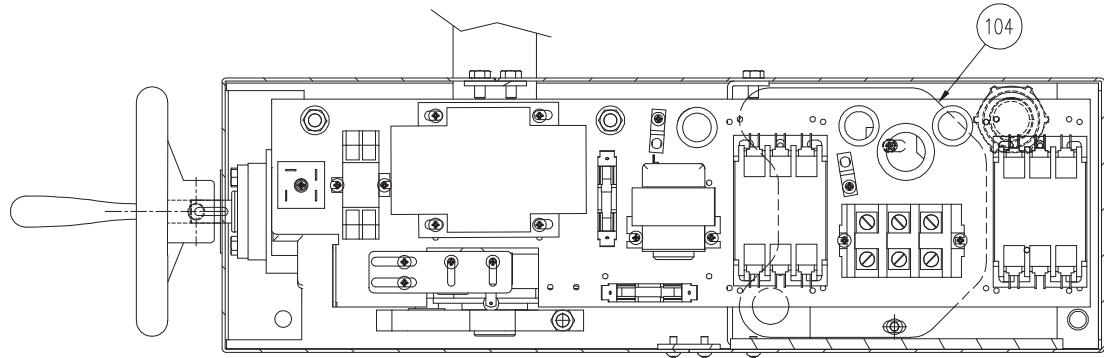
## Common Parts

ITEM #	PART #	DESCRIPTION	QTY.
	<b>SPK</b> _____	<b>SINGLE PANTRY FAUCET KIT</b> , (includes items 1-10) see page 2 for ordering information	
	<b>DPK</b> _____	<b>DOUBLE PANTRY FAUCET</b> , (includes items 1-8 & 11) see page 2 for ordering information	
1.	KE50825- _____	<b>SPOUT</b> , see page 2 for ordering information	
2.	_____	<b>FAUCET MOUNTING BRACKET</b> , see page 2 for ordering information	1
3.	FA05002-19	"O" RING	1
4.	KE51736	LONG FAUCET NUT	1
5.	FA95007-10	RETAINING RING	1
6.	FA11258	HEX CAP SCREW	2
7.	FA31029	LOCK WASHER	2
8.	FA21008	HEX NUT	2
9.	KE51401	SINGLE PANTRY BODY (c/w item 13)	1
10.	KE50335	ADAPTER WASHER	1
11.	KE51403	DOUBLE PANTRY BODY (c/w item 13 & 14)	1
12.	SE50447	REPLACEMENT HORSESHOE WASHER	1
13.	SE50021	REPLACEMENT STEM ASSEMBLY, COLD WATER	1
14.	SE50020	REPLACEMENT STEM ASSEMBLY, HOT WATER	1
15.	SD50097	FLANGED NUT, 3/4" NPT, CHROME PLATED	1
16.	KE51585	FAUCET SPOUT FITTING	1
17.	SD50098	LOCKNUT, 3/4" NPT	1
18.	FI00266	COUPLING, 1/2" NPT	1
19.	SD50100	COPPER TUBE	1
20.	KE51899	REMOTE VALVE (c/w item 13 & 14)	1

# FAUCETS

## Models

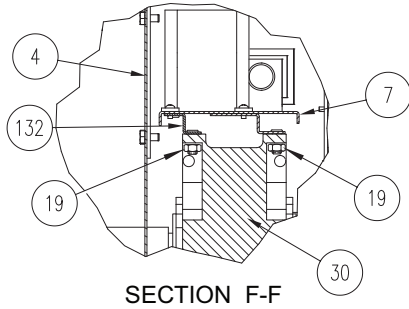
	<b>FAUCET KIT</b>	<b>BRACKET</b>	<b>SPOUT</b>
KDT12/20 ON SD TABLE	SPK1 DPK1		KE50825-1
KDL60/80/100T KEL40/60/80/100T KET20 KGT,MKET, KDP60-100/T	SPK2 DPK2	KE54159 KE02071-1 (CP)	KE50825-2
KDL25/40T KEL25T,KDP25/40T	SPK3 DPK3	KE54159	KE50825-3
KDM60/T	SPK-KDM60 DPK-KDM60		KE50825-2
KDM25/40/T	SPK6 DPK6		KE50825-6
KDL40/60/80TSH KEL40/60TSH	SPK7 DPK7	KE54159	KE50825-7
KDT6 ON SD OR ST	SPK8 DPK8		KE50825-8
TKET, KET3/6/12	SPK9 DPK9	KE54159	KE50825-9
KDL125/150T KGL40/60/80T KGL40TSH	SPK10 DPK10	KE54159	KE50825-10
HAMKGL60/80/100T	SPK11 DPK11	KE54159	KE50825-11
KGL25T, T1	SPK13 DPK13	SK00395-1 KE02071-2 (CP)	KE50825-7
TR	SPK14 DPK14	SK2382300 SK2382400 (SPACER)	KE50825-6
SET10	DPK15 SPK15	SK2308800	KE50825-6
SET15	SPK16 DPK16	SK2302200	KE50825-6
HAMKGL60/80/100	DPK17 SKP17		KE50825-12
ALL STATIONARY KETTLES	DPK5 SPK5		KE50825-5



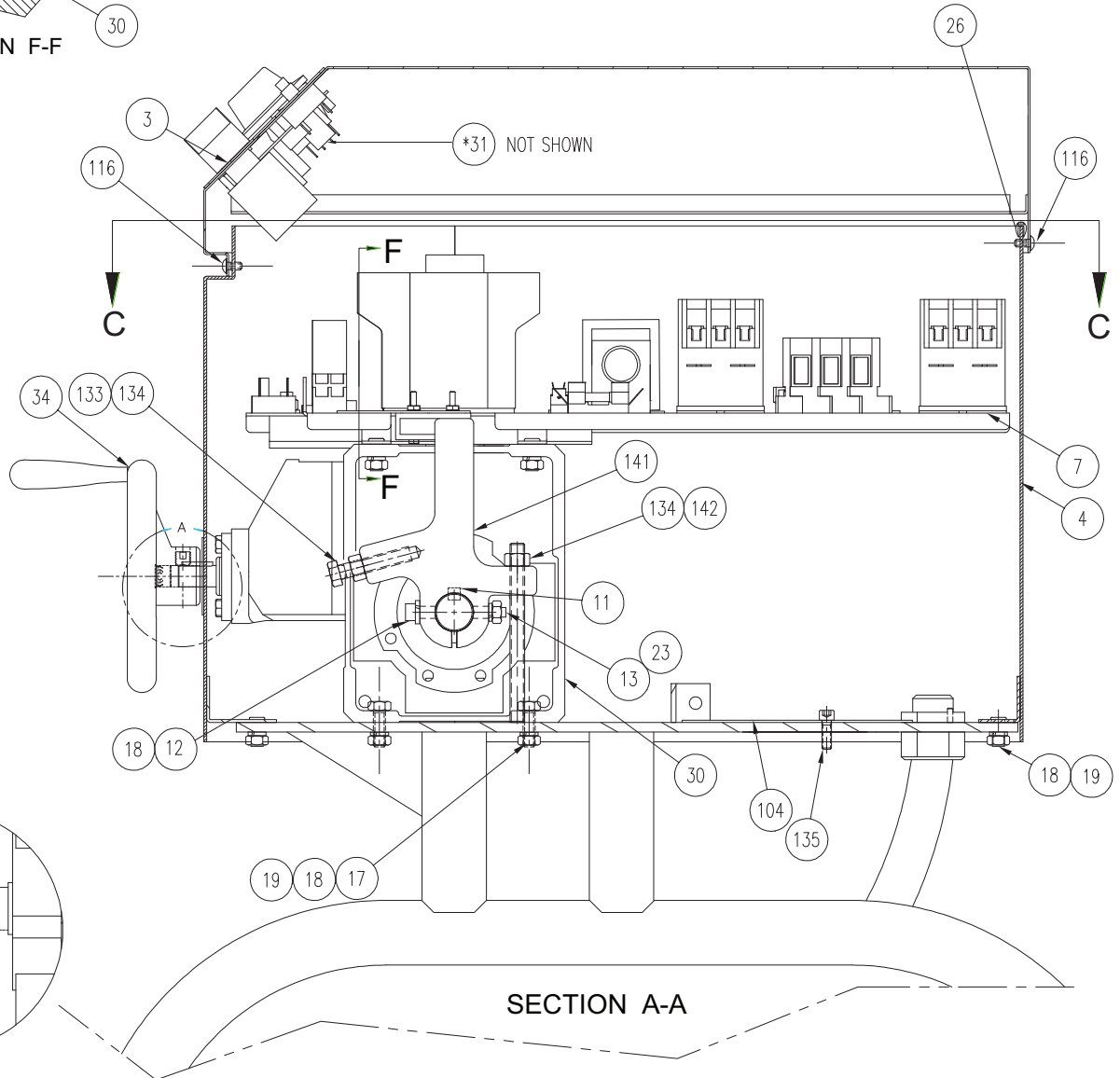
SECTION C-C

## MANUAL TILT

2 SIDES & BACK

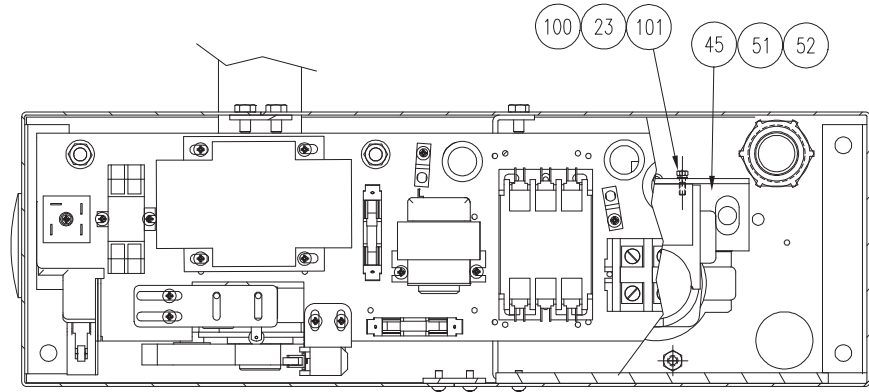


SECTION F-F



SECTION A-A

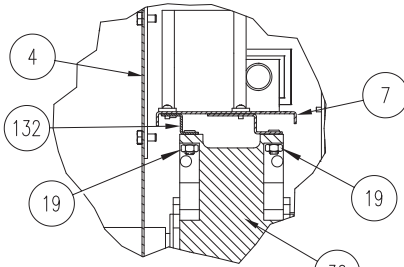
DETAIL A



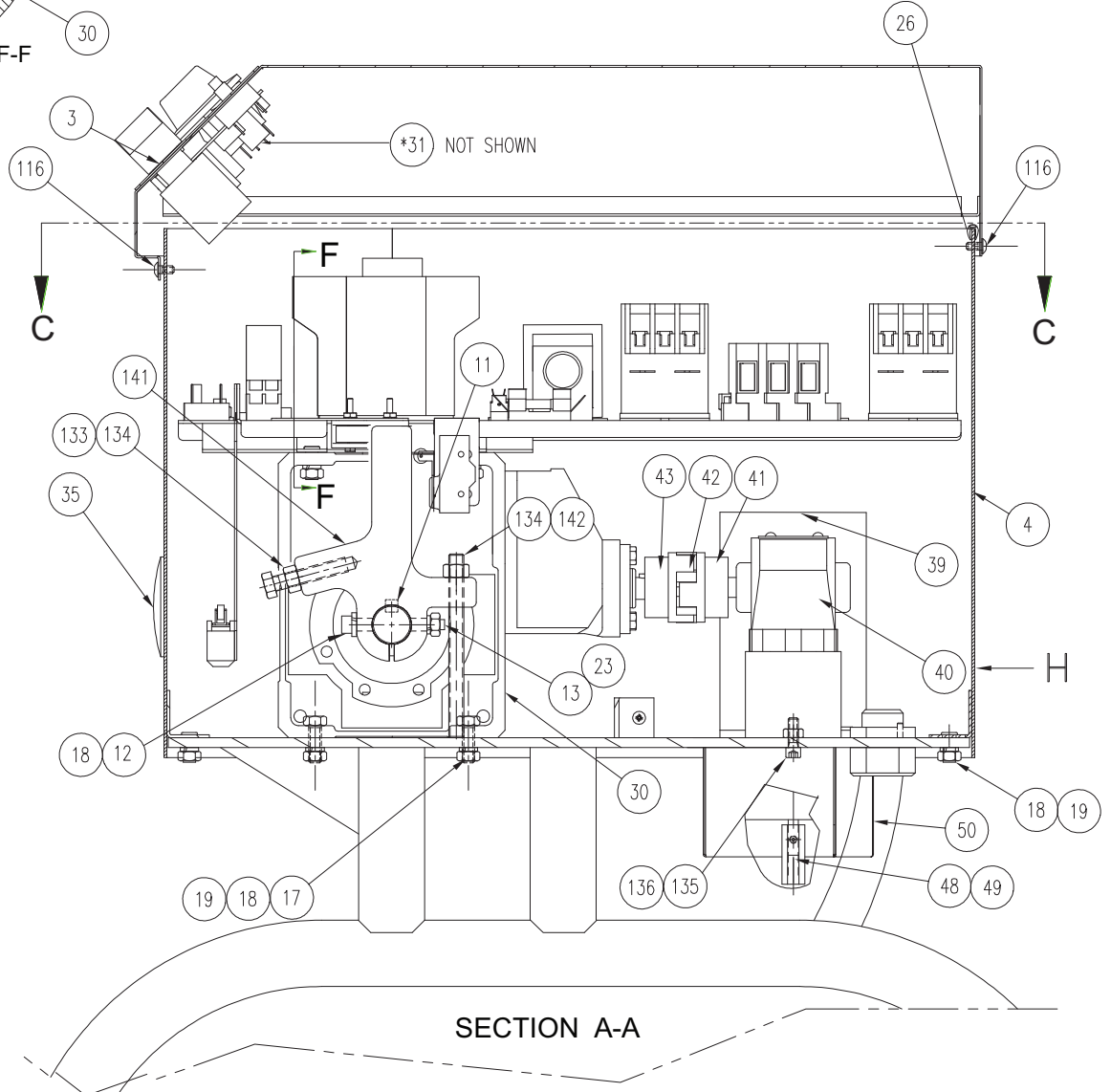
SECTION C-C

POWER TILT

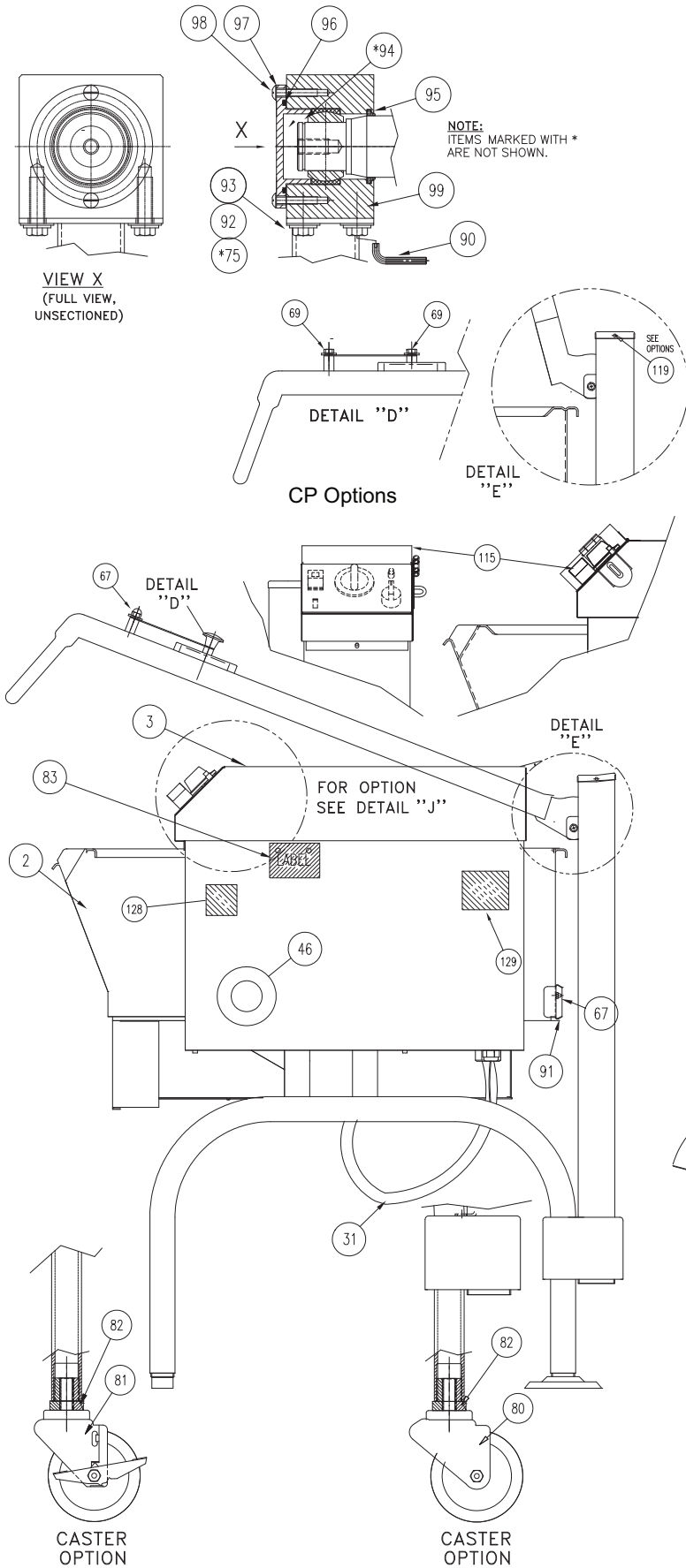
2 SIDES & BACK



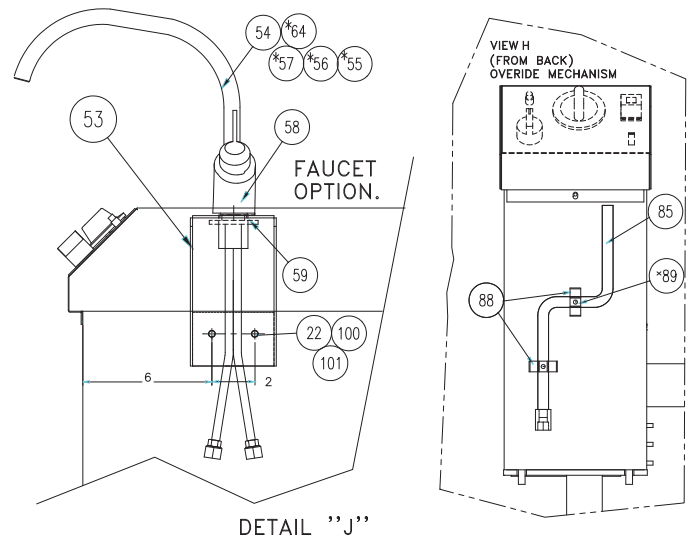
SECTION F-F



SECTION A-A



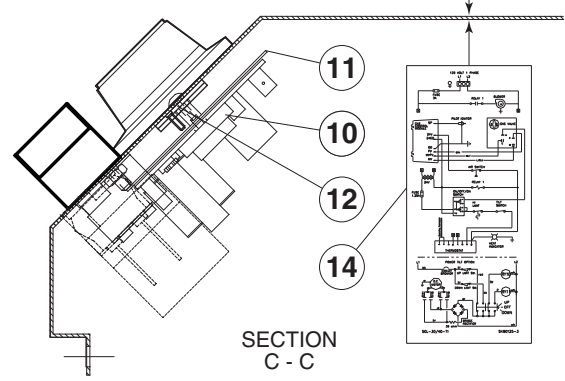
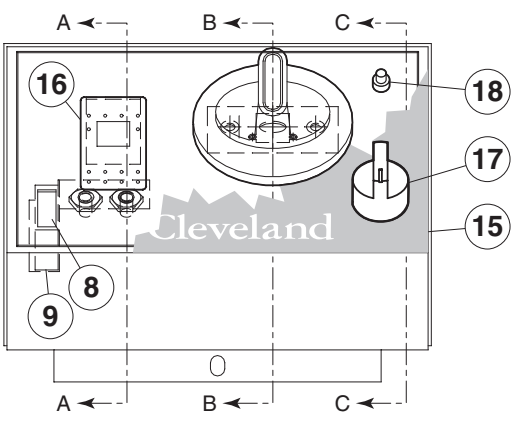
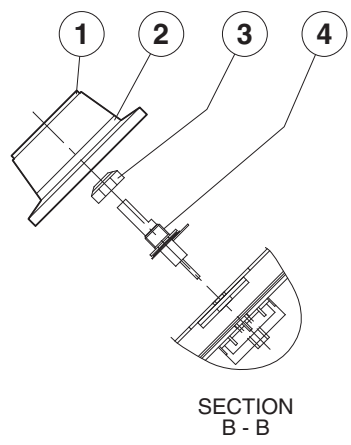
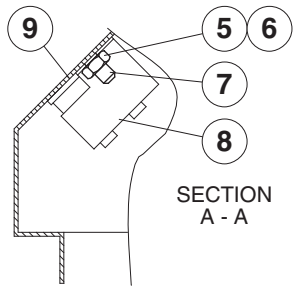
COMMON PARTS					
REV.	BILL OF MATERIALS				
A	KE003713-12	SEL-40-T1	208-240, 480V	▼	
A	KE003713-11	SEL-30-T1	208-240, 480V	▼	
ITEM	PART#	DESCRIPTION		QTY	QTY
1	SK00393-7	FRAME ASSEMBLY		1	-
	SK00393-9	FRAME ASSEMBLY		-	1
2	SK00406-1	PAN ASSEMBLY		1	-
	SK00412-1	PAN ASSEMBLY		-	1
11	FA95055-16	KEY 8mm X 8mm X 107mm		1	1
12	FA15019-7	SHOULDER BOLT		1	1
13	FA21008	1/4-20 HEX NUT, 18-8 S.S.		5	5
17	FA11325	HEX. CAP SCREW 5/16-18 X 1-1/4" S.S. 18-8		4	4
18	FA31030	5/16 SPLIT LOCKWASHER 5/16 S.S.		9	9
19	FA21024	NUT, 5/16-18 S.S. 18-8		8	8
23	FA31029	SPLIT LOCKWASHER 1/4		5	5
26	KE600284-6	GASKET, SILICONE GRAY		1	
31	WHSELT1A	NEW HARNESS FOR SEL-T1		1	1
46	KE51084-2	WASHER		1	1
91	SK2495600	STRIP FILL		1	-
	SK2474400	STRIP FILL		-	1
67	FA21501-2	ACORN NUT 1/4-20, S.S.		4	4
92	KE55445	WASHER, HIGH STRENGTH ULTRA-COATED		4	4
93	FA31031	SPLIT LOCK WASHER, S.S., #3/8		4	4
94	FA95007-12	RETAINING RING, #1 3/16		1	1
95	KE55440	WIPER SEAL		1	1
96	FA05002-47	O-RING, #2 X #2 3/16		1	1
97	KE55446	PLATE, BEARING RETAINING		1	1
99	KE02383	HOUSING ASSEMBLY, TRUNNION		1	1
126	SK2274601	LIQUID TIGHT FITTING, 1" STRAIGHT		1	-
	SK2489001	LIQUID TIGHT FITTING, 1" 90'		-	1
133	FA10772	3/8-16 X 1 1/2 HEX BOLT		1	1
134	FA21026	3/8-16 HEX NUT, S.S.		2	2
141	KE602239-4	STOP ARM		1	1
142	FA95052-9	THREADED ROD 3/8-16UNC x 4 5/8" LG.		1	1



BILL OF MATERIALS				
	KE003713-12	SEL-40-T1 208-240, 480V		▼
	KE003713-11	SEL-30-T1 208-240, 480V	▼	
ITEM	PART#	DESCRIPTION	QTY	QTY
<b>MANUAL TILT</b>				
3	SK00387-35	GEARBOX COVER ASSY; SEL-T1, MANUAL TILT °F OPTION	1	1
	SK00387-36	GEARBOX COVER ASSY; SEL-T1, MANUAL TILT °C OPTION		
	SK00387-45	GEARBOX COVER ASSY; SEL-T1, MANUAL TILT °C OPTION	-	-
4	KE002590-5	WRAP WELDMENT FOR GEAR	1	1
6	KE003878-1	COMPONENT PLATE ASS'Y, MT. 208-240, 480V	1	1
30	KE55513-3	GEAR UNIT	1	1
34	KE603904-1	HAND WHEEL	1	1
35	KE54738-7	WASHER, FLAT	1	1
130	KE54907-15	PLUG BUTTON	1	1
131	FA19505	SET SCREW 3/8-24 X 3/8	2	2
104	KE603929-1	BOTTOM PLATE MT T1_SKILLET	1	1
<b>POWER TILT</b>				
3	SK00387-37	GEARBOX COVER ASSY; SEL-T1, POWER TILT °F OPTION	1	1
	SK00387-38	GEARBOX COVER ASSY; SEL-T1, POWER TILT °C OPTION		
	SK00387-46	GEARBOX COVER ASSY; SEL-T1, POWER TILT °C OPTION	-	-
4	KE002590-4	WRAP WELDMENT FOR GEAR	1	1
6	KE003878-1	COMPONENT PLATE ASS'Y, PT. 208-240, 480V	1	1
16	FA31030	SPLIT LOCKWASHER 5/16 S.S.	1	1
23	FA31029	SPLIT LOCKWASHER 1/4	4	4
29	WHST1-PTA	POWER TILT HARNESS FOR T1	1	1
30	KE55513-2	GEAR UNIT	1	1
	KE55513-3	GEAR UNIT		
35	KE54907-16	PLUG BUTTON	1	1
39	KE601725-2	SUPPORT	1	1
40	KE52832-5	MOTOR, POWER TILT	1	1
41	KE50582-5	COUPLING HUB, 1/2 BORE	1	1
42	KE50583-1	COUPLING SPIDER	1	1
43	KE50582-6	COUPLING HUB, 14mm BORE	1	1
45	FA11384	HEX. CAP SCREW 3/8-16 X 1"	2	2
48	KE602542	EXTENSION FOR SHAFT	1	1
49	KE602543	SOCKET SET SCREW, CONE POINT	1	1
50	KE602507-1	BOTTOM COVER	1	1
51	FA21026	3/8 HEXAGON NUT	2	2
52	FA31031	3/8 SPLIT LOCKWASHER S.S.	2	2
85	KE003160	HANDLE WELDMENT	1	1
88	SK2473800	SPRING CLIP	2	2
89	F10	SCREW: PAN QUAD8-32 X 3/8	2	2
100	FA30505-1	FLAT WASHER 1/4	4	4
101	FA11258	1/4-20 x 3/4 BOLT, 18-8 S.S.	4	4
136	FA21008	HEX NUT; 1/4-20 18-8 S/S	2	2

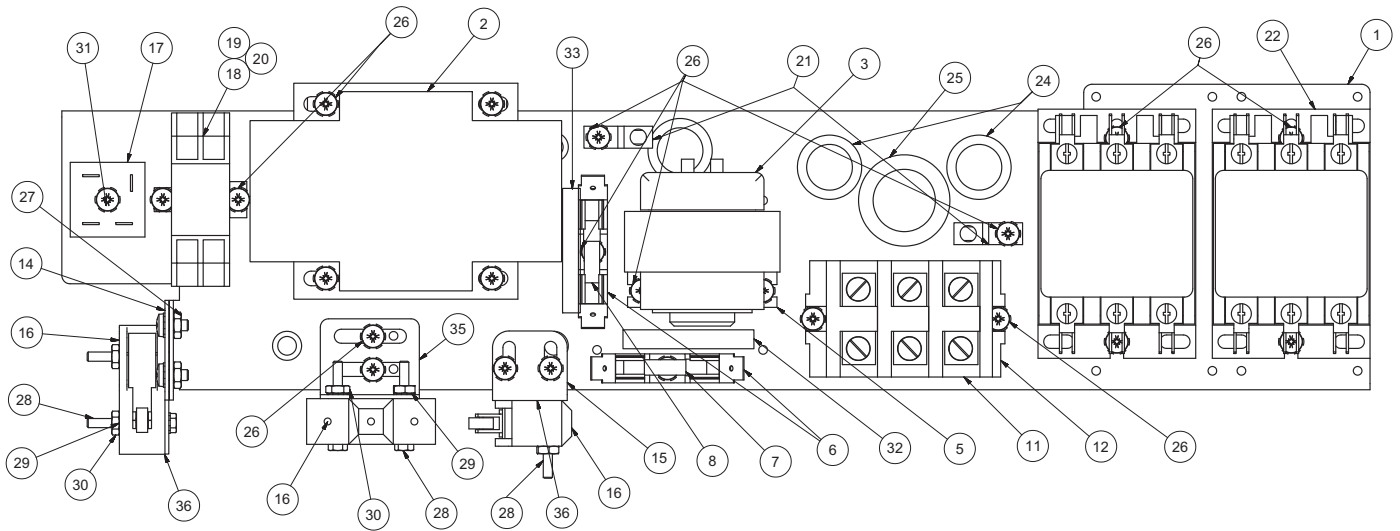
BILL OF MATERIALS				
	KE003713-12	SEL-40-T1 208-240, 480V		▼
	KE003713-11	SEL-30-T1 208-240, 480V	▼	
ITEM	PART#	DESCRIPTION	QTY	QTY
<b>NO FAUCET OPTION</b>				
83	KE95447	LABEL: TO COVER FAUCET MTG. HOLES	1	1
<b>FAUCET OPTION ( COMMON PARTS )</b>				
22	FA21008	HEX. NUT 1/4-20	2	2
23	FA31029	SPLIT LOCKWASHER 1/4	2	2
53	SK00395-1	FAUCET BRACKET WELDMENT	1	1
54	KE50825-7	FAUCET SPOUT	1	1
55	FA95007-10	RETAINING RING	1	1
56	FA05002-19	O'RING	1	1
57	KE51736	FAUCET NUT	1	1
100	FA30505-1	FLAT WASHER 1/4	4	4
101	FA11258	1/4-20 X 3/4 HEX HEAD CAP SCREW	2	2
<b>SINGLE PANTRY FAUCET OPTION</b>				
58	KE51401	SINGLE PANTRY FAUCET BODY	1	1
59	KE50335	ADAPTER WASHER	1	1
<b>DOUBLE PANTRY FAUCET OPTION</b>				
58	KE51403	DOUBLE PANTRY FAUCET BODY	1	1
<b>PRE-RINSE SPRAY HEAD</b>				
64	PRSS-T1	PRE-RINSE SPRAY HEAD	1	1
<b>SINGLE PANTRY FILLER</b>				
64	SKFS-T1	SINGLE PANTRY FAUCET FILLER	1	1
<b>DOUBLE PANTRY FILLER</b>				
64	DKFS-T1	DOUBLE PANTRY FAUCET FILLER	1	1
<b>PAN CARRIER OPTION.</b>				
66	SK2499999	PAN CARRIER ASSEMBLY	-	1
<b>POURING LIP STRAINER OPTION</b>				
*78	SK2390802	STRAINER FOR POUR LIP	1	1
<b>TD VALVE STRAINER OPTION</b>				
*78	SK2390803	STRAINER FOR TD VALVE	1	1
<b>FBS-F-T1</b>				
53	SK00395-2	FAUCET BRACKET, FRANCE	1	1
<b>CASTER OPTION</b>				
80	KE53068-3	SWIVEL CASTER W/O BRAKE	2	2
81	KE53068-4	SWIVEL CASTER WITH BRAKE	2	2
82	KE53046-1	CASTER SLEEVE	4	4
<b>CP-PCB-T1</b>				
69	FA20502	1/4-20 18-8SS; NUT- SERRATED-FLANGE	2	2
75	FA11511-20	SECURITY HEX SOCKET SCREW 3/8-16 X1	4	4
90	FA11511-101	SHORT ARM SECURITY HEX KEY	1	1
98	FA11511-2	10-32 X 3/8 PAN HEAD TORX SCREW	4	4
115	SK00415-1	PROTECTIVE COVER	1	1
116	FA11511-2	10-32 X 3/8 PAN HEAD TORX SCREW	2	2
119	FA11511-16	6-32 X 3/8 S.S. TORX SCREW	2	2
121	KE602946	PLUG (MANUAL TILT ONLY)	1	1
135	FA11511-1	1/4-20 X 1/2 PAN HEAD TORX SCREW	2	2
<b>NO CP OPTION</b>				
67	FA21501-2	ACORN NUT 1/4-20, S.S.	1	1
75	KE55443	CAP SCREW, 3/8-16, HIGH STRENGTH	4	4
98	F182	10-32 x 1/2 SLOTTED HEAD S.S. SCREW	4	4
116	FA11145	10-32 X 3/8 PAN HEAD MACHINE SCREW S.S.	2	2
119	FA11054	6-32 X 3/8 S.S. MACHINE SCREW	2	2
135	FA11286	1/4-20 x 3/4 SCREW SHCS	2	2

# CONTROL BOX ASSEMBLY



ITEM NO.	PART NO.	DESCRIPTION	QTY.
1.	SK2138700	KNOB ASSEMBLY	1
2.	SK2360700	DIAL INSERT °F	1
	SK2360701	DIAL INSERT °C	1
3.	KE51005	RUBBER BOOT. #N9030 X 1/4	1
4.	SK2498399	POTENTIOMETER SHAFT ASSEMBLY	1
INCLUDES	SK2166800	POTENTIOMETER SHAFT	7
	SK2167000	TENSION PIN	7
	SK2167100	WASHER, BOWED/SPRING	7
	SK2167200	RETAINING RING, SP-NR #R1000-25	7
	SK2167300	PANEL BEARING	7
	SK2382800	RETAINING RING CLIP	7
5.	FA21006	NUT, S.S. F#10-24	2
6.	FA32022	TOOTH LOCK WASHER #10 S.S.	2
7.	FA40000-6	#10-24 X 3/8 S.S. WELD STUD	2
8.	SK50903-1	BRACKET, INDICATOR LIGHT	1
9.	SK50905-1	HEAT INDICATOR, 28V	1
10.	SK2142002	THERMOSTAT	1
11.	SK2159300	THERMOSTAT INSULATOR	1
12.	SK2491500	STOP PLATE ASSEMBLY	1
13.	SK95063	CAUTION LABEL	1
14.	KE603743-2	WIRING DIAGRAM	1
15.	KE95604-3	CONTROLS LABEL, MANUAL TILT	1
	KE95604-4	CONTROLS LABEL, POWER TILT	1
16.	SK2474103	SWITCH, ON/OFF/ON	1
17.	KE003209-11	TILT SWITCH, ON/OFF	1
	KE603206-7	CONTACT SECTION HOLDER (LATCH)	1
	KE603206-9	CONTACT BLOCK	4
18.	KE50579-2	CIRCUIT BREAKER	1
	FA05002-34	"O" RING, CIRCUIT BREAKER	1
	KE602984	WATER RESISTANT BOOT	1

# COMPONENT PLATE ASSEMBLY



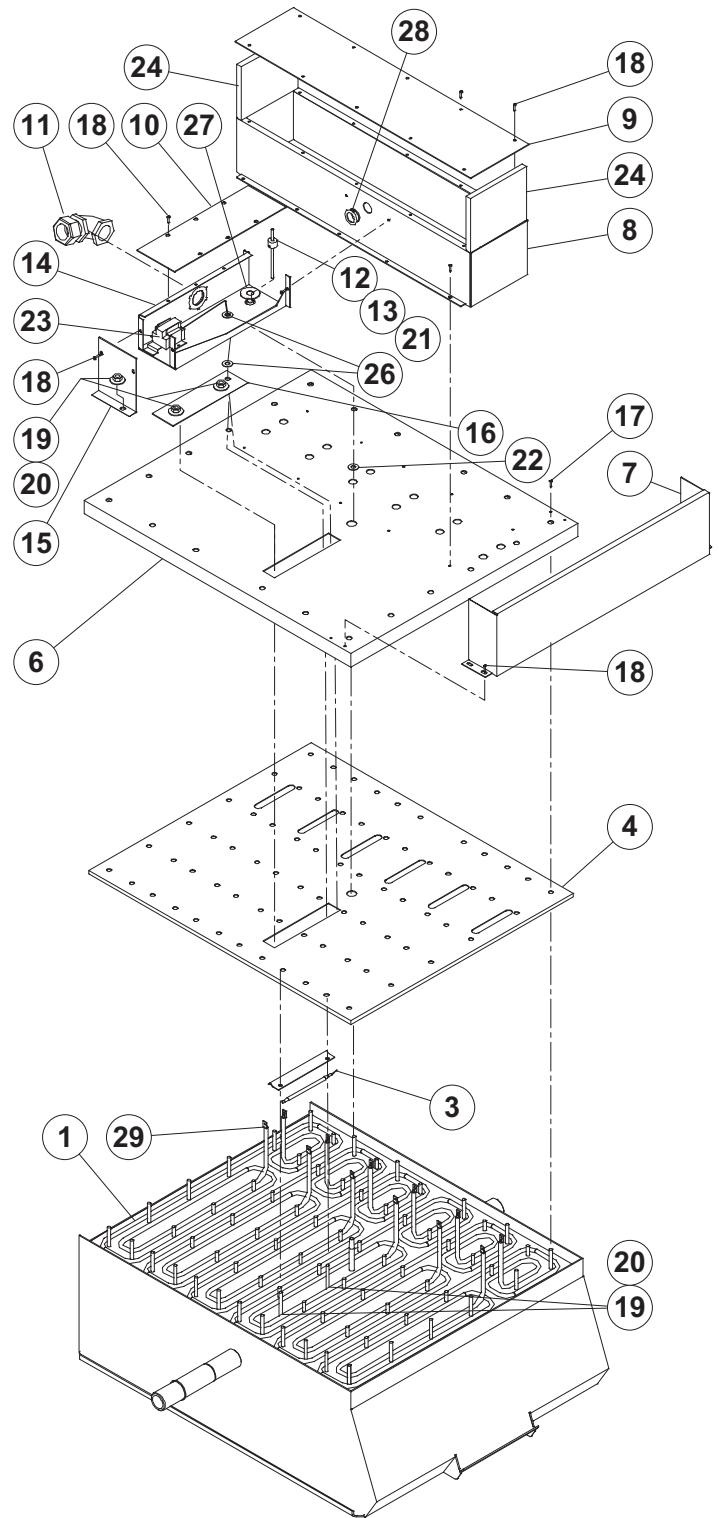
REV.	ITEM	PART #	DESCRIPTION	QTY	QTY	QTY	QTY
A	-	KE003878-8	COMPONENT PLATE ASSY; SEL-T1 PT, 380-415V/50, SELT1				▼
A	-	KE003878-7	COMPONENT PLATE ASSY; SEL-T1 MT, 380-415V/50, SELT1			▼	
A	-	KE003878-6	COMPONENT PLATE ASSY; SEL-T1 PT, 220-240V/50, SELT1				
A	-	KE003878-5	COMPONENT PLATE ASSY; SEL-T1 MT, 220-240V/50, SELT1		▼	▼	
		1	KE604037 COMPONENT PLATE	1	1	1	1
		2	KE53838-10 TRANSFORMER; 100 VA, 208-230,460/115,24 V, 50/60 Hz	1	1	-	-
			KE53838-11 TRANSFORMER; 100 VA, 380-415,460/110,120 V, 50/60 Hz	-	-	1	1
		3	KE53838-25 TRANSFORMER; 40 VA, 120/24 V, 60 Hz	-	-	-	-
		4	KE53838-35 TRANSFORMER; 50 VA, 240/24 V, 50/60 Hz	1	1	1	1
		5	KE53444 BRACKET, TRANSFORMER MOUNTING	-	-	-	-
		6	KE51139 FUSE HOLDER	-	-	-	-
		7	KE52936-8 FUSE; 1.25A, 250V, FAST ACTION (AGC)	-	-	-	-
		8	KE52936-20 FUSE; 3A, 250V FAST ACTION (AGC)	-	-	-	-
SEE NOTE		9	KE52936-14 FUSE; 3A, 600V, SLOW BLOW	1	1	1	1
		10	KE52936-16 FUSE; 1.5A, 600V, SLOW BLOW	1	1	1	1
		11	KE50377 TERMINAL BLOCK	3	3	3	3
		12	KE50376 TERMINAL BLOCK END PIECE	1	1	1	1
		14	KE602571-1 BRACKET; LIMIT SWITCH MOUNTING, FULL TILT	-	1	-	1
		15	KE602573-2 BRACKET; LIMIT SWITCH MOUNTING	-	1	-	1
		16	SK2474500 SWITCH; TILT LIMIT	1	3	1	3
		17	KE50581 BRIDGE RECTIFIER	-	1	-	1
		18	SK2475500 RELAY; DPDT/24V COIL/240AC	1	1	1	1
		19	SK2475600 RELAY SOCKET	1	1	1	1
		20	SK2475700 RELAY CLIP	1	1	1	1
		21	KE50473 GROUND LUG	2	2	2	2
		22	KE603902-7 CONTACTOR; 120VAC, 3 POLES, 40 AMPS	-	-	-	-
			KE603902-8 CONTACTOR; 115VAC, 3 POLES, 90 AMPS	2	2	2	2
		24	SK01487-8 SNAP-IN BUSHING, 7/8 DIA.	3	3	3	3
		25	KE54833-5 SNAP-IN BUSHING, 1-1/4 DIA.	1	1	1	1
		26	FA15018-4 #8-32 X 3/8 LONG SCREW, PHIL PAN HEAD, SEMS EXT	20	24	20	24
		27	FA21004 #8 - 32 S.S. HEX. NUT	-	2	-	2
		28	FA11060 #6-32 X 1"LONG SCREW, PHIL PAN HEAD, SEMS EXT	2	6	2	6
		29	FA32004 #6 EXTERNAL TOOTH LOCK WASHER	2	6	2	6
		30	FA21002 #6-32 S.S. HEX. NUT	2	6	2	6
		31	FA15018-8 #8-32 X 1"LONG SCREW, PHIL PAN HEAD, SEMS EXT	1	1	1	1
		32	KE604020-1 LABEL; FUSE 1.25A, 250V, FAST ACTION	-	-	-	-
			KE604020-3 LABEL; FUSE 1.5A, 600V, SLOW BLOW	1	1	1	1
		33	KE604020-2 LABEL; FUSE 3A, 250V, FAST ACTION	-	-	-	-
		34	KE604020-4 LABEL; FUSE 3A, 600V, SLOW BLOW	1	1	1	1
		35	KE604063 5 DEG. BRACKET	1	1	1	1
		36	KE50498 MICRO SWITCH INSULATION	-	2	-	2

**NOTE:**

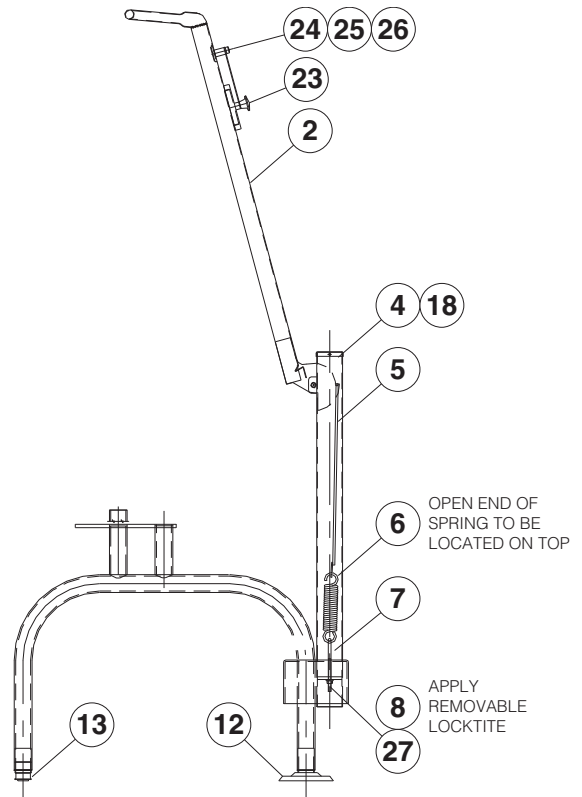
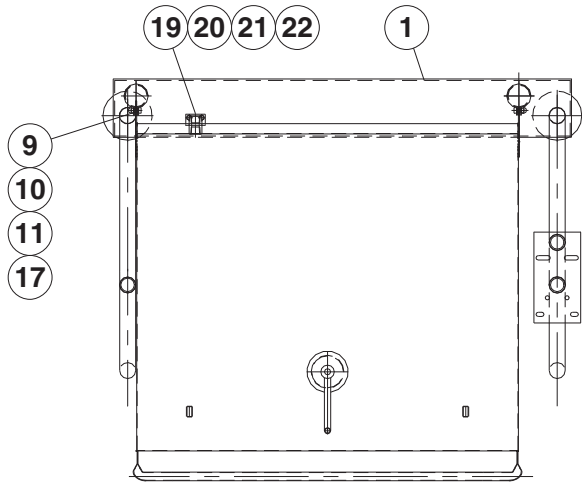
FUSE HOLDER FOR ITEMS # 9 & 10 PROVIDED BY SUPPLIER, AS A PART OF TRANSFORMER.

# PAN MOUNT ASSEMBLY

ITEM NO.	PART NO.	DESCRIPTION	QTY.
1.		HEATING ELEMENTS .....	6
	<b>30 GALLON</b>		
	SK50845-1	ELEMENT, 2.00 KW, 480 VAC	
	SK50845-2	ELEMENT, 2.67 KW, 416 VAC	
	SK50845-3	ELEMENT, 2.00 KW, 416 VAC	
	SK50845-4	ELEMENT, 2.67 KW, 240 VAC	
		ELEMENT, 2.00 KW, 208 VAC	
	SK50845-5	ELEMENT, 2.00 KW, 240 VAC	
	SK50845-6	ELEMENT, 2.67 KW, 208 VAC	
	SK50845-8	ELEMENT, 2.67 KW, 480 VAC	
	<b>40 GALLON</b>		
	SK50861-1	ELEMENT, 4.00 KW, 480 VAC	
	SK50861-2	ELEMENT, 3.00 KW, 480 VAC	
	SK50861-3	ELEMENT, 4.00 KW, 416 VAC	
	SK50861-4	ELEMENT, 3.00 KW, 416 VAC	
	SK50861-5	ELEMENT, 4.00 KW, 240 VAC	
		ELEMENT, 3.00 KW, 208 VAC	
	SK50861-6	ELEMENT, 3.00 KW, 240 VAC	
	SK50861-7	ELEMENT, 4.00 KW, 208 VAC	
3.	SK2353900	BRACKET FOR THERMOCOUPLE ...	1
4.	SK50958-3	CLAMPING PLATE, SEL-30-T1 .....	1
	SK50958-4	CLAMPING PLATE, SEL-40-T1 .....	1
6.	SK50960-1	ELEMENT COVER .....	1
7.	SK50862-1	TRIM, 30 GAL. SKILLET .....	1
	SK50862-2	TRIM, 40 GAL. SKILLET .....	1
8.	SK50961	ELECTRIC BOX WRAP .....	1
9.	SK50850-1	ELECTRICAL BOX COVER .....	1
10.	SK50965	SIDE BOX COVER .....	1
11.	SK2489001	LIQUID TIGHT FITTING .....	1
12.	SK2490600	FULL COUPLING S.S. ....	1
13.	SK2487800	BAYONET, ADAPTER .....	1
14.	SK00409	SIDE BOX ASSEMBLY .....	1
15.	SK50963	BRACKET .....	1
16.	SK50962	THERMOCOUPLE COVER .....	1
17.	FA20502	PALNUT .....	.66
18.	FA11144	SCREW, S.S. 10-32 X 1/4 .....	.46
19.	FA21008	HEX. NUT 1/4-20 .....	.4
20.	FA30505-1	WASHER, 1/4 .....	.4
21.	SK50933-1	TEMPERATURE SENSOR .....	1
22.	FA30505-3	WASHER .....	1
23.	KE55069-7	HIGH LIMIT .....	1
24.	SK50908-1	INSULATION, ELECTRICAL BOX ...	.2
26.	KE55247	SILICON WASHER .....	.2
27.	KE53735	WASHER .....	1
28.	KE54833-4	SNAP-IN BUSHING .....	1
29.	FA95088	HEX FLANGE, SCREW, 10-32 X 1/2 ...	12



# FRAME / LID ASSEMBLY



ITEM NO.	PART NO.	DESCRIPTION	QTY.
1.	SK00392-7	FRAME WELDMENT (30 GALLON)	.1
	SK00392-9	FRAME WELDMENT (40 GALLON)	.1
2.	SK2457192	LID ASSEMBLY (30 GALLON)	.1
	SK2457193	LID ASSEMBLY (40 GALLON)	.1
4.	KE50187-1	CAP	.2
5.	SK00394-1	HOOK WELDMENT	.2
6.	SK2452300	SPRING	.2
7.	FA95087-1	EYE BOLT	.2
8.	FA20008	HEX NUT	.2
9.	KE53573-1	BEARING	.2
10.	FA15019-4	SHOULDER BOLT	.2
11.	FA21501-2	ACORN NUT	.2
12.	KE00099	ADJUSTABLE FOOT (FLANGED)	.2
13.	KE50249-2	FOOT ADJUSTOR (W/O FLANGE)	.2
17.	FA31029	LOCKWASHER	.2
18.	FA11054	SCREW	.4
19.	SK2459299	COUPLING ASSEMBLY	.1
20.	FA21024	HEX NUT (5/16-18)	.2
21.	FA31030	LOCKWASHER	.2
22.	FA30055	FLAT WASHER	.2
23.	SK00054	VENT COVER ASSEMBLY	.1
24.	SK2211200	EXTENSION, VENT COVER	.1
25.	FA95081-1	BOLT, MODIFIED	.1
26.	SK50179	WASHER	.1
27.	FA30504	WASHER	.2