



**KE002226 RETROFIT KIT FOR LIMIT SWITCH SK2348100
For TR & F-series skillets produced before March 2006**

This kit contains parts to replace the previous limit switch on units with or without a TD valve.

Included Parts

- Limit Switch
- Mounting Brackets
- Liquid tight fitting
- Screws
- Locating template

Not Supplied

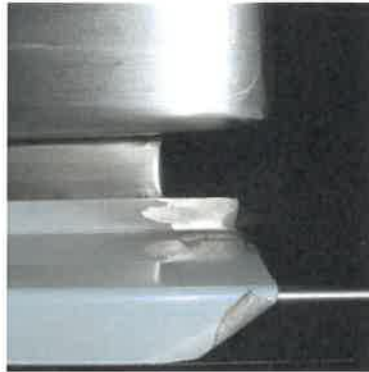
- #29 drill
- Tap 8-32



Limit switch replacement for units without a TD valve.

Adjustment

Tilt skillet until the bottom of the skirt (at the rear corner) is just below the top cover lip as shown.



Disconnecting existing switch

- Turn power to unit off
- Open front panel
- Remove cover on electrical box
- Trace wires from limit switch to connection point.
- Remove wires (note connection points for replacement switch).
- Remove liquid tight fitting.
- Remove wire from box.



Remove switch

Remove limit switch and discard.
Remove striker plate attached to hinge and discard.



New limit Switch

Using existing mounting holes in frame mount new limit switch.
Ensure limit switch roller is aligned with pan hinge as shown.



Liquid tight fitting Installation

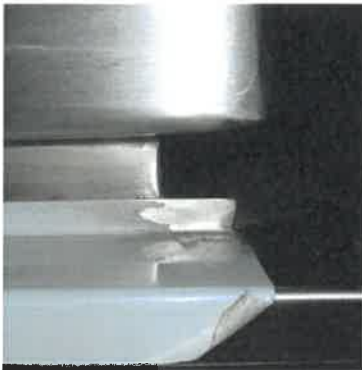
Picture shows component box with old wiring and panel bushing removed.
Enlarge hole in component box and install new liquid tight fitting.



Reconnect power to Unit

Adjustment

Tilt skillet until the bottom of the skirt is just below the cover lip as shown.
Ignition system should turn off if the unit is raised any higher and turn on at this height or less.
Adjust by tilting skillet slightly, loosening the limit switch arm (allows switch to centre) then retighten arm against motor. Retest

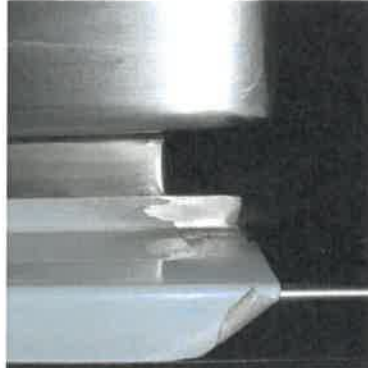


Reassemble skillet

Limit switch replacement for unit with a TD valve.

Adjustment

Tilt skillet until the bottom of the skirt (at the rear corner) is just below the top cover lip as shown.



Disconnecting existing switch

Turn power to unit off
Open front panel
Remove cover on electrical box
Trace wires from limit switch to connection point.
Remove wires (note connection points for replacement switch).
Remove liquid tight fitting.
Remove wire from box.



Liquid tight fitting Installation

Picture shows old component box with wiring and panel bushing removed.

Enlarge hole in component box and install new liquid tight fitting.



Remove switch

Remove limit switch and bracket. Discard.

New mounting holes

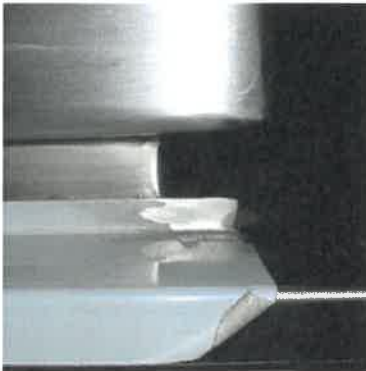
Push supplied template locating pin into hole on jack mounting arm
Slide drilling template over pin and align with arm as shown.
Mark location of two mounting holes.
Remove template and pin.
Drill holes using #29 drill, ½ inch deep
Tap 8-32

**Mount new limit switch (electric Motor)****Mount new limit switch (Hydraulic Motor)**

Mount limit switch arm as shown.
Check that hydraulic line does not interfere with limit switch travel

**Reconnect power to unit.****Adjustment**

Tilt skillet until the bottom of the skirt is just below the cover lip as shown.
Ignition system should turn off if the unit is raised any higher and turn on if this height or less.
Adjust by tilting skillet slightly, loosening the limit switch arm (allows switch to centre) then retighten arm against motor. Retest

**Reassemble skillet**