

## WALL MOUNT, DIRECT STEAM

2/3 STEAM JACKETED

25, 40, 60, 80 OR 100 GALLONS

STATIONARY OR TILTING (ALSO MIXER KETTLES)

Project \_\_\_\_\_  
 Item \_\_\_\_\_  
 Quantity \_\_\_\_\_  
 FCSI Section 11400 \_\_\_\_\_  
 Approved \_\_\_\_\_  
 Date \_\_\_\_\_

### Models

- KDW-25    • KDW-80    • KDW-25-T    • KDW-80-T
- KDW-40    • KDW-100    • KDW-40-T    • KDW-100-T
- KDW-60                   • KDW-60-T



### Standard Features

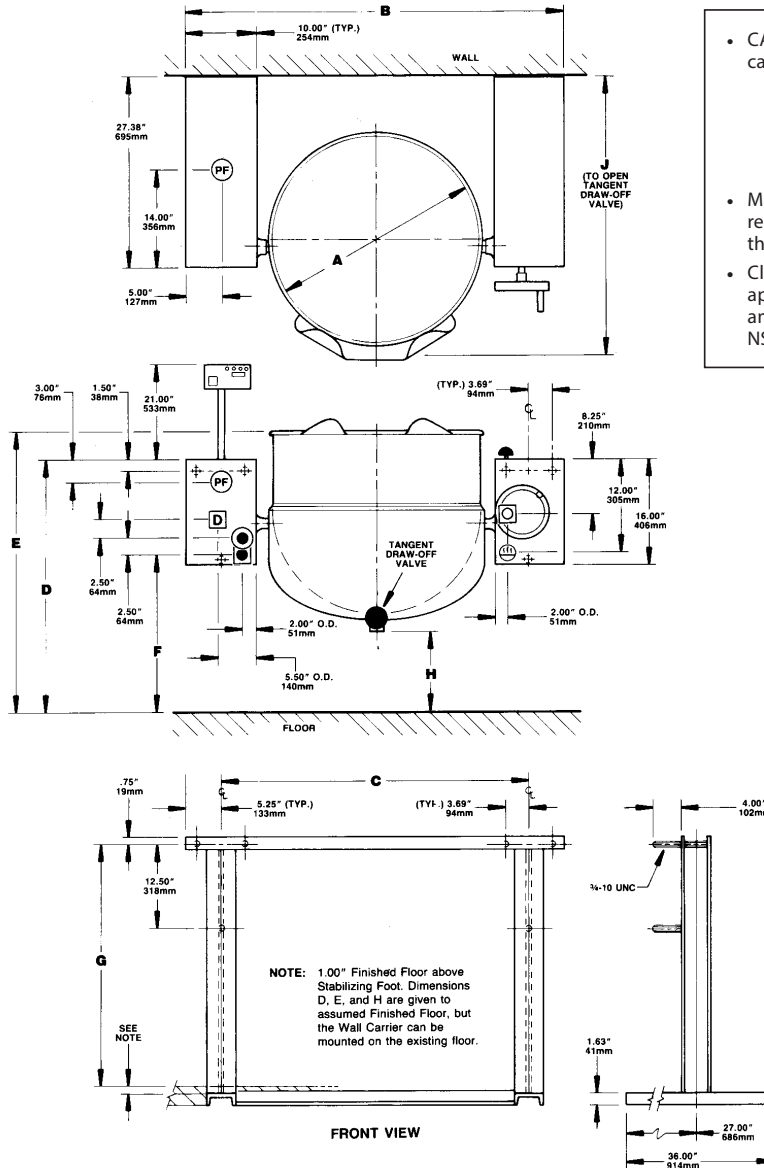
- Steam Control Kit includes: Steam Control Valve, Steam, Trap, Condensate Strainer, Check Valve, Nipples and Fittings, Factory Assembled and mounted on Kettle
- Kettle and Console Wall Mounting of Type 304 Stainless Steel with #4 Finish
- Spring Assisted, Hinged, Domed, Stainless Steel Cover
- 50 psi Steam Jacket Rating, 35 psi for 100 Gallon Models
- Hot and Cold Water faucet with Swing Spout
- Power Pour standard on 100 Gallon , Tilting Models
- Tilting Mechanism, when furnished, has permanently lubricated, self-locking, Worm Drive of space saving design
- 1.50" diameter Tangent Draw-Off Valve with Strainer
- High Capacity Pouring Lip on Tilting Models
- Steam Jacket Condensate Drain Valve with insulated handle

### Short Form Specifications

Shall be CLEVELand, Kettle, Wall Mount, (stationary or Tilting), Direct Steam, Model KDW - \_\_\_\_\_ - \_\_\_\_\_; \_\_\_\_\_ Gallons. 2/3 Steam Jacketed, Type 304 Stainless Steel with 50 psi Steam Jacket rating. Support Consoles are Stainless Steel. Includes Spring Assisted, Domed, Rotatable, Cover. 1.50" Tangent Draw-Off Valve, Steam Condensate Trap and Strainer, Factory Assembled and Installed. Hot and Cold or Cold only, Pantry Water Faucet with Swing Spout. To Operate, connect directly to a steam source supplying from 5 to 45 psi steam.

### Options & Accessories

- Type 316 Stainless Steel Kettle Interior for high acid food products (316)
- Steam Supply Moisture Separator/Trap (MS)
- Tri-Basket Supports (TBS)
- Measuring Strip
- Incremental Markings (KM)
- Power Tilting for 40, 60, and 80 Gallon Models (PT)
- Food Strainer (FS)
- Flow Diverter (FD)
- Steam Pressure Reducing Valve (PRV)
- Automatic Water Meter (GMF or LMF)
- Automatic Water Cooling (AWC-1)
- 2" or 3" diameter Tangent Draw-Off Valve with Strainer (TD)
- Kettle Accessory Kit (KAK)
- 1 1/2", 2" or 3" diameter Dairy Valves (DV)
- Pan Carrier (PCK)
- Covers, other than standard (CHS)
- Swing Funnel (SF)
- In-Wall Carriers - see drawing on back of this page (IWC-PDW)



- CAPACITIES: (in 8 oz. servings) (Other sizes may be calculated)
  - 25 Gallon / 95 liters ..... 400
  - 40 Gallon / 150 liters ..... 640
  - 60 Gallon / 225 liters ..... 940
  - 80 Gallon / 300 liters ..... 1280
- Many regional, state and local codes exist and it is the responsibility of the owner and installer to comply with those codes.
- Cleveland Range equipment is built to comply with applicable standards for manufacturers. Included among those approval agencies are: UL, A.G.A., NSF, ASME/N.Bd., CSA, CGA, ETL, and others.

KETTLE SIZE		1.50" TANGENT DRAW-OFF VALVE										2.00" TANGENT DRAW-OFF VALVE										3.00" TANGENT DRAW-OFF VALVE									
GALS.	LITERS	A	B	C	D	E	F	G	H	J	D	E	F	G	H	J	D	E	F	G	H	J									
25	100	IN 21.00	45.00	35.00	30.50	37.00	18.25	29.00	14.25	40.75	30.50	37.00	18.25	29.00	14.25	43.75	30.50	37.00	18.25	29.00	14.00	48.13									
		mm 533	1143	889	775	940	464	737	362	1036	775	940	464	737	362	1111	775	940	464	737	356	1223									
40	150	IN 26.00	50.00	40.00	30.50	37.00	18.75	29.00	12.25	41.25	30.50	37.00	18.75	29.00	12.25	44.13	33.50	40.00	21.75	32.00	14.50	49.13									
		mm 660	1270	1016	775	940	476	737	311	1048	775	940	476	737	311	1121	775	1016	552	813	368	1248									
60	225	IN 29.50	53.50	43.50	34.50	41.00	20.00	33.00	12.75	42.25	34.50	41.00	20.00	33.00	12.75	44.88	37.13	43.63	22.63	35.63	14.63	50.13									
		mm 749	1359	1105	876	1041	508	838	324	1073	876	1041	508	838	324	1140	943	1108	575	905	372	1273									
80	300	IN 33.00	57.00	47.00	36.50	43.00	21.25	36.00	12.75	43.00	36.50	43.00	21.25	36.00	12.75	45.50	38.38	45.88	24.13	37.88	14.88	51.13									
		mm 838	1448	1194	927	1092	540	889	324	1092	927	1092	540	889	324	1156	1000	1165	613	862	378	1299									

DIRECT STEAM	ELECTRIC	WATER	CLEARANCE								
Steam supply: •Furnish 3/4" IPS minimum line. Operating pressure 5 to 45 psi. with 50 psi Safety Valve	<table border="1"> <tr> <th>VOLTS 1 PH</th> <th>AMPS</th> </tr> <tr> <td>115</td> <td>5</td> </tr> <tr> <td>240</td> <td>2.5</td> </tr> </table> For Power Pour only. Specify Voltage when ordering.	VOLTS 1 PH	AMPS	115	5	240	2.5	<table border="1"> <tr> <td>                             3/4" IPS minimum                         </td> <td>                             Condensate Return                         </td> </tr> </table>	3/4" IPS minimum	Condensate Return	RIGHT = 0" LEFT = 0" REAR = 0"
VOLTS 1 PH	AMPS										
115	5										
240	2.5										
3/4" IPS minimum	Condensate Return										

OPTIONAL SUPPLIES								
<table border="1"> <tr> <td><b>D</b></td> <td>Automatic Drain</td> </tr> <tr> <td><b>PF</b></td> <td>Single, or Double, Pantry Faucet (1/2" Soft Copper Tubing)</td> </tr> <tr> <td><b>●</b></td> <td>Cooling Water In (3/4 NPT)</td> </tr> <tr> <td><b>○</b></td> <td>Cooling Water Out (3/4 NPT)</td> </tr> </table>	<b>D</b>	Automatic Drain	<b>PF</b>	Single, or Double, Pantry Faucet (1/2" Soft Copper Tubing)	<b>●</b>	Cooling Water In (3/4 NPT)	<b>○</b>	Cooling Water Out (3/4 NPT)
<b>D</b>	Automatic Drain							
<b>PF</b>	Single, or Double, Pantry Faucet (1/2" Soft Copper Tubing)							
<b>●</b>	Cooling Water In (3/4 NPT)							
<b>○</b>	Cooling Water Out (3/4 NPT)							

**NOTES:**

Cleveland Range reserves right of design improvement or modification, as warranted.  
 Many regional, state and local codes exist and it is the responsibility of the owner and installer to comply with the codes.  
 Installation of backflow preventers, vacuum breakers and other specific code requirements is the responsibility of the owner and installer.  
 Cleveland Range equipment is built to comply with applicable standards for manufacturers. Included among those approval agencies are U.L., A.G.A., NSF, ASME/N.Bd., CSA, CGA, ETL and others.

(NOT TO SCALE)