



Service Bulletin

"O" RING REPLACEMENT ON KDL-T KETTLES

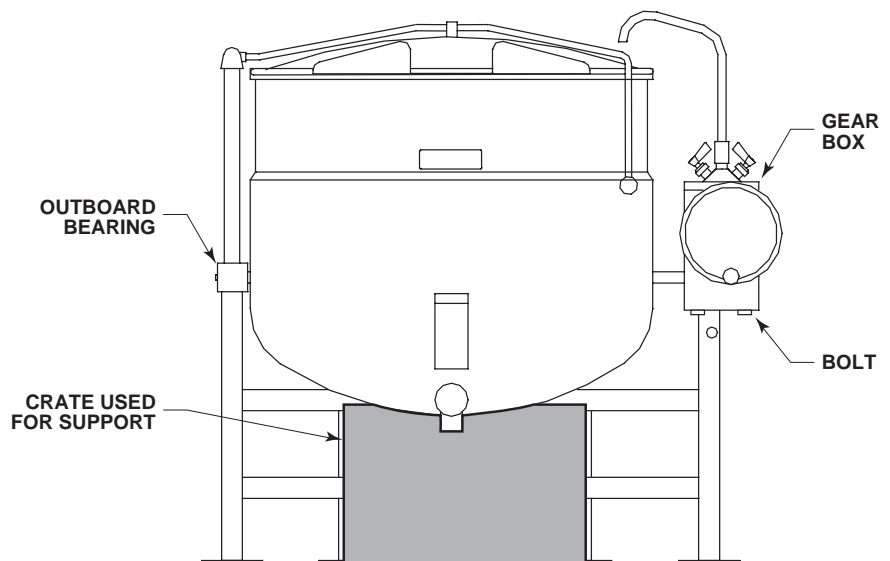
**The following is a general guideline to use
when replacing "O" rings on direct steam kettles.**



**IMPORTANT:
Shut off main steam line to kettle.**

PROCEDURE

1. Support the bottom of the kettle to prevent it from falling or shifting when the gear box is removed. A crate that supports a large area on the bottom of the kettle is best.
2. Disconnect steam supply line to gear box.
3. Remove the cover on the gear box.
4. Remove the retaining ring on trunnion.
5. Loosen allen screw on gear.
6. Remove the bolts located under the gear box that hold the gear box to the frame.
7. Pull the gear box away from the kettle and remove.
8. Remove retaining bolt in side of outboard bearing.
9. Pull kettle away from outboard bearing.
10. Replace "O" rings.
11. Apply an "O" ring lubricant to "O" rings.
12. Slide kettle back into out board bearing.
13. Replace gear box.



1333 East 179th St.
Cleveland, Ohio
U.S.A. 44110

Phone: (216) 481-4900 Fax: (216) 481-3782
Visit our web site at www.clevelandrange.com

 **Cleveland**