



COOK/CHILL INCLINED AGITATOR STATIONARY MIXER KETTLES

- MODELS:** IA-MKDL-60-CC IA-MKDL-200-CC
 IA-MKDL-100-CC IA-MKDL-300-CC
 IA-MKDL-150-CC



Cleveland Standard Features

- Full 60,100,150,200 or 300 gallon working capacity
- Electrically driven, Inclined Agitator Mixer Arm
- Variable mixer speed control
- Heavy duty, removable breaker bar
- Flush mounted, easily removable temperature probe
- Simmer control for cooking delicate products
- 3" diameter air operated, flush mounted piston draw-off valve (requires air compressor)
- Spiral flights for even water cooling
- Motor protection shield
- Easily removable agitator without the use of tools
- Spring loaded scraper blades
- Kettle mounted valve box for single point utility connections
- Heavy duty rim bar
- 100 psi steam jacket rating and safety valve
- Type 316 stainless steel for all food contact surfaces
- Water fill faucet with swing spout
- NSF approved
- Accepted for use in USDA inspected facilities

Note: This COOK/CHILL mixer kettle requires a control panel for operation which must be specified separately.

Standard Features for Kettle Control Center:

- Solid state temperature control with digital read-out
- Time/Temperature Chart Recorder to provide permanent record of Batch Processing
- Automatic and manual steam control
- Automatic and manual water cooling
- Simmer control for delicate products
- Automatic water meter with accumulative "add on" button and digital readout
- U.L. approved

Options & Accessories

- Single or dual remote control center
- Stainless steel lift-off cover
- Tilt-out agitator
- Larger models, up to 800 gallons available
- 3" flush mounted ball valve
- Loading bucket and dolly
- Electric chain hoist for lifting the product load

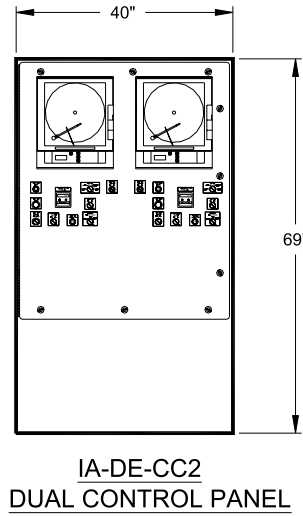
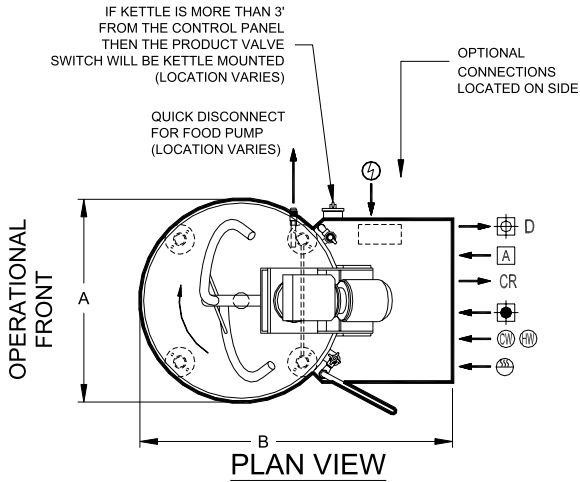
ITEM NUMBER _____

JOB NAME / NUMBER _____



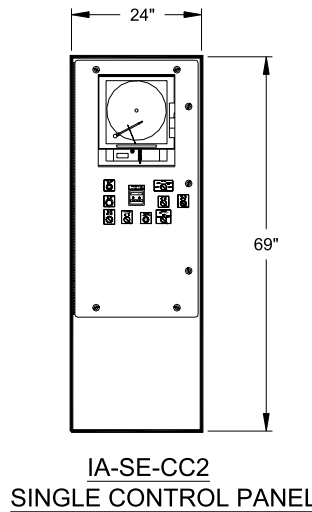
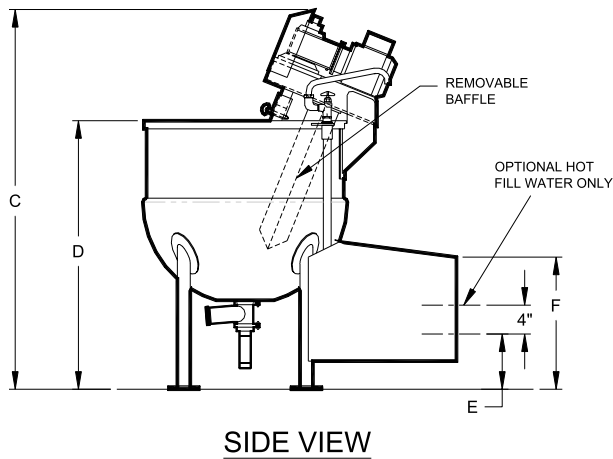
Short Form Specifications

Shall be CLEVELAND Model IA-MKDL- ___-CC; COOK/CHILL STATIONARY INCLINED MIXER KETTLE, ___ gallons; leg mounted; 2/3 jacketed, direct steam; 100 psi Steam Jacket Pressure Rating; 316 Stainless Steel Liner; electrically driven Inclined Agitator; Variable Mixer Speed Control; 3" diameter air operated, flush mounted Piston Draw-Off Valve; spring loaded Scraper Blades; flush mounted Temperature Probe; Automatic Water Meter; Water Fill Faucet with swing spout; Time/Temperature Chart Recorder (located in Control Center).



MINIMUM CLEARANCE FOR KETTLES	
FRONT	36"
SIDE	12"
REAR	12"

NOTE:
CONTROL PANEL
DEPTH 18 3/4"



- ELECTRICAL POWER TO AND FROM CONTROL PANEL**
- CONTRACTOR MUST CUT ENTRY HOLE
 - TOP OR BOTTOM POWER ENTRY RECOMMENDED
 - MUST USE PROPER CONNECTIONS TO MAINTAIN U.L. LISTING

DIMENSIONS

MODEL	A	B	C	D	E	F	ELECTRICAL PER KETTLE - 208V/3PH/60Hz	R.P.M.
IA-MKDL-60-CC	32"	52"	64"	45 1/2"	8"	24"	10 AMPS	6-35
IA-MKDL-100-CC	39"	58 1/2"	70"	49 1/2"	9"	28"	12 AMPS	6-35
IA-MKDL-150-CC	45"	63"	79"	52 1/2"	9"	30"	15 AMPS	6-32
IA-MKDL-200-CC	49"	67"	84"	57 1/2"	9"	32"	15 AMPS	6-32
IA-MKDL-300-CC	56"	79"	89"	62 1/2"	11"	36"	25 AMPS	6-32

UTILITY CONNECTIONS

MODEL	CHILLED WATER INLET	CHILLED WATER RETURN	COLD POTABLE WATER	** HOT WATER	CONDENSATE RETURN	DRAIN	AIR INLET	STEAM
					CR	D	A	
IA-MKDL-60-CC	3/4" 15 GPM	3/4"	1/2" 15 GPM	1/2" 15 GPM	1/2"	3/4"	1/2" 1 CFM	3/4" 320 lbs/hr
IA-MKDL-100-CC	1" 20 GPM	1"	3/4" 20 GPM	3/4" 20 GPM	3/4"	1"	1/2" 1 CFM	1" 525 lbs/hr
IA-MKDL-150-CC	1 1/4" 20 GPM	1 1/4"	3/4" 20 GPM	3/4" 20 GPM	1"	1 1/4"	1/2" 1 CFM	1 1/4" 780 lbs/hr
IA-MKDL-200-CC	1 1/4" 25 GPM	1 1/4"	3/4" 20 GPM	3/4" 20 GPM	1"	1 1/4"	1/2" 1 CFM	1 1/4" 1050 lbs/hr
IA-MKDL-300-CC	1 1/2" 30 GPM	1 1/2"	3/4" 20 GPM	3/4" 20 GPM	1"	1 1/2"	1/2" 1 CFM	1 1/2" 1575 lbs/hr

** HOT FILL WATER IS OPTIONAL
65 PSI STEAM OPERATING PRESSURE IS RECOMMENDED

(NOT TO SCALE)
SECT. XIV PAGE 12
0600
Litho in USA

INSTALLATION INSTRUCTIONS FOR INCLINED AGITATOR KETTLE

1. WHEN REMOVING THE KETTLE FROM THE PLATFORM, HANDLE WITH CARE TO PREVENT SCRATCHING OR ANY OTHER DAMAGE. IT IS IMPERATIVE THAT THE KETTLE BE LEVEL BEFORE BOLTING TO THE FLOOR. THIS WILL PREVENT ANY TWIST OR OUT OF ROUNDNESS TO THE KETTLE AND WILL STOP DEFLECTION OF THE AGITATOR. MAKE SURE THE KETTLE IS SECURELY BOLTED TO THE FLOOR AND FOLLOW THE PROCEDURE LISTED BELOW:
 - A. BECAUSE MOST FLOORS HAVE A PITCH TO ALLOW FOR DRAINING THE FLANGES CAN ONLY BE LOWERED APPROXIMATELY 1" DOWNWARD. IF THERE IS ANY VOID BETWEEN THE FLANGE AND THE FLOOR YOU MUST USE SHIMS TO FILL UP THE SPACE.
2. NEXT YOU MUST CHECK THE ALIGNMENT OF THE DRIVE SHAFT TO THE AGITATOR, PULL THE PULL PIN THAT HOLDS THE COUPLING IN PLACE. THEN SLIDE THE COUPLING DOWN AND BACK UP ONLY TO MAKE SURE THAT IT MOVES FREELY, IF NOT THERE IS SOME TWIST ON KETTLE LEGS AND IT MUST BE CORRECTED UNTIL THE COUPLING MOVES UP AND DOWN FREELY.

- NOTES:**
1. ALL WETTED PARTS IN CONTACT WITH PRODUCT TO BE T-316 SST AND ALL OTHERS TO BE T-304 SST UNLESS NOTED OTHERWISE
 2. VESSEL TO HAVE A #4 FINISH INSIDE & OUTSIDE.
 3. 3 1/4" OF FREEBOARD WITH A VOLUME OF 14.5 GALS.
 4. KETTLE INTERIOR DIMS: 36" DIA x 32" DP.
 5. OVERALL DIMS ARE ± 1"

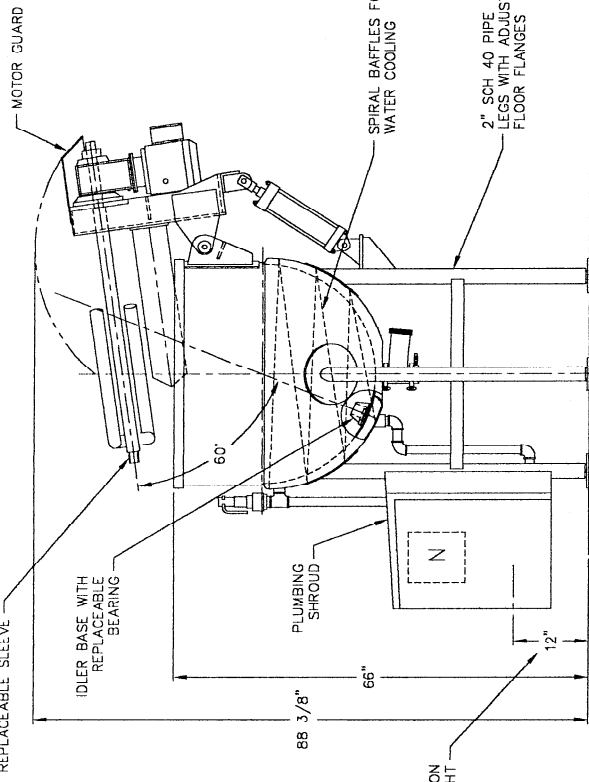
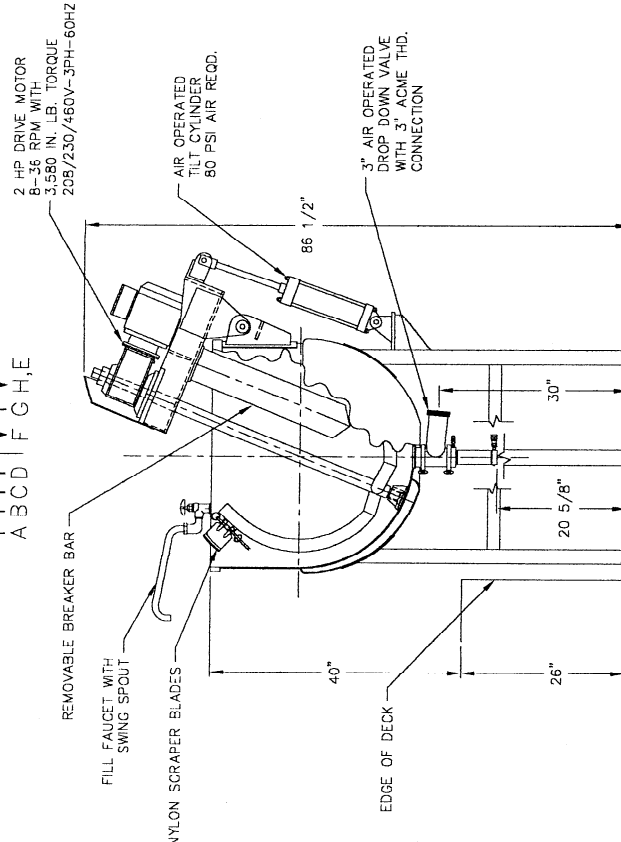
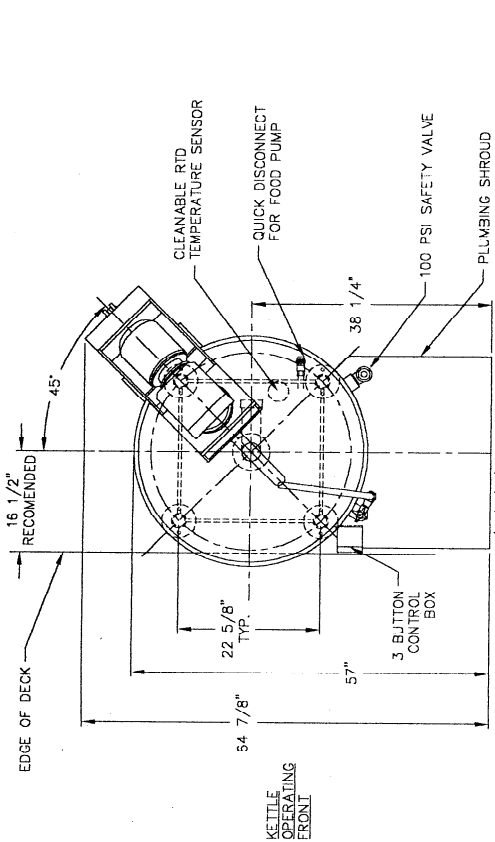
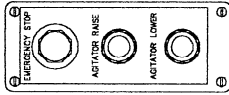
UTILITY CONNECTIONS:

- A) 1" NPT STEAM IN
- B) 3/4" NPT COLD POTABLE WATER
- C) 3/4" NPT HOT POTABLE WATER
- D) 1" NPT COOLING WATER IN
- F) 1" NPT CONDENSATE RETURN
- G) 1/2" NPT AIR IN
- H,E) 1" NPT COOLING WATER OUT/JACKET DRAIN
- N) CONTROL/MOTOR POWER FROM MAIN CONTROL PANEL

SPECIFICATIONS:

VESSEL DESIGNED AND BUILT TO SECTION VIII, DIVISION I OF THE 1998 ASME CODE FOR MAX. WORKING PRESSURE OF 100 PSI AT 338 °F. VESSEL TO BE STAMPED AND NATIONAL BOARD REGISTERED WITH U1 CERTIFICATE FURNISHED TO CUSTOMER.

3 BUTTON CONTROL BOX



REV.	DESCRIPTION	BY	DATE
	REVISIONS		

J.C.PARDO & SONS INC. 1250 REAMES RD. BALTO MD, 21220 PHONE (410) 981-3900	ORDER BY: JES DATE: 8/9/01 QUANTITY: 1	DRAWING NO: 9074-ICP REV: D SHEET: 1 of 1
--	--	---

NOTES:

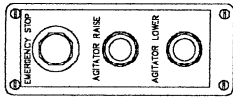
1. ALL WETTED PARTS IN CONTACT WITH PRODUCT TO BE T-316 SST AND ALL OTHERS TO BE T-304 SST UNLESS NOTED OTHERWISE.
2. VESSEL TO HAVE A #4 FINISH INSIDE & OUTSIDE.
3. 4 1/2" OF FREEBOARD WITH A VOLUME OF 32 GALS.
4. KETTLE INTERIOR DIMS: 46" DIA. x 40" DP.
5. OVERALL DIMS ARE ± 1"

UTILITY CONNECTIONS:

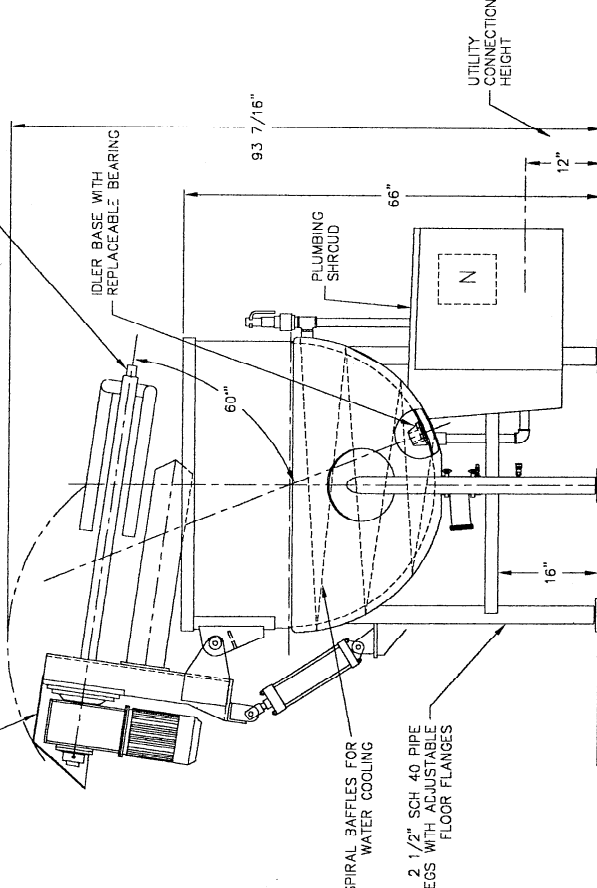
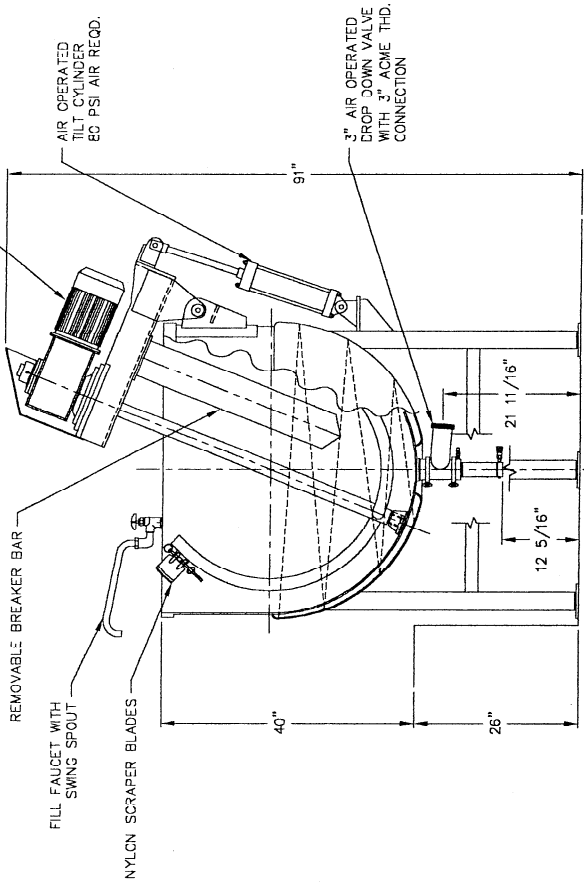
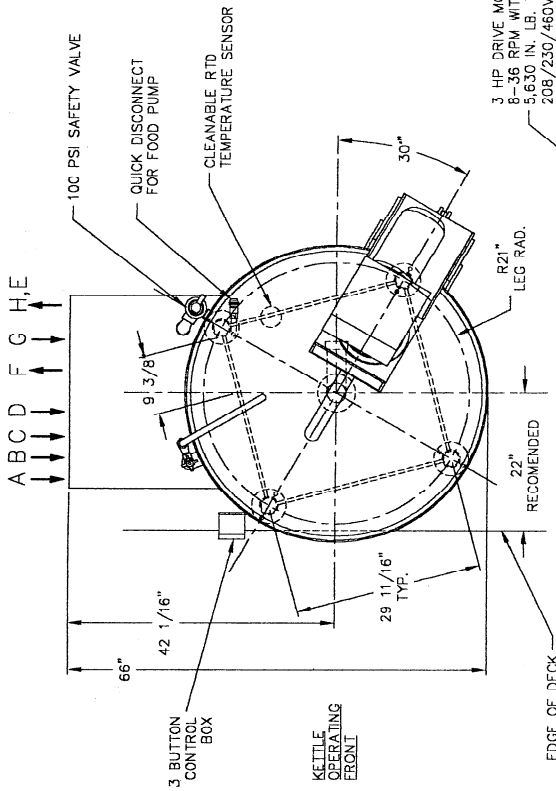
- A) 1 1/4" NPT STEAM IN
- B) 3/4" NPT COLD POTABLE WATER
- C) 3/4" NPT HOT POTABLE WATER
- D) 1 1/4" NPT COOLING WATER IN
- F) 1 1/4" NPT CONDENSATE RETURN
- G) 1/2" NPT AIR IN
- H,E) 1 1/4" NPT COOLING WATER OUT & JACKET DRAIN
- N) CONTROL/MOTOR POWER FROM MAIN CONTROL PANEL

SPECIFICATIONS:

VESSEL DESIGNED AND BUILT TO SECTION VIII, DIVISION 1 OF THE 1998 ASME CODE FOR MAX. WORKING PRESSURE OF 100 PSI AT 338 °F. VESSEL TO BE STAMPED AND NATIONAL BOARD REGISTERED WITH U1 CERTIFICATE FURNISHED TO CUSTOMER.



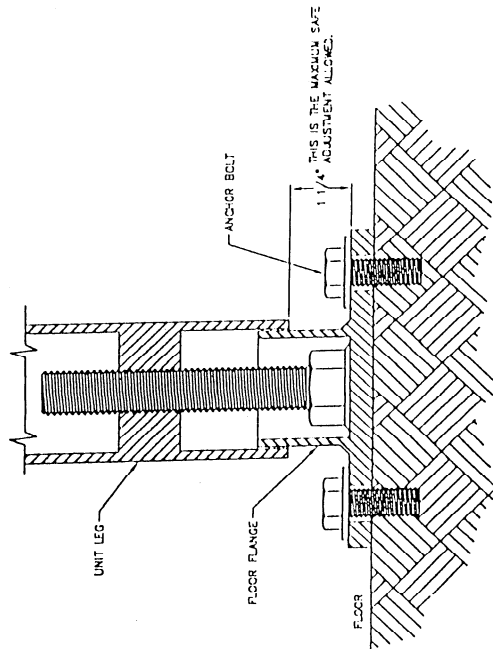
3 BUTTON CONTROL BOX



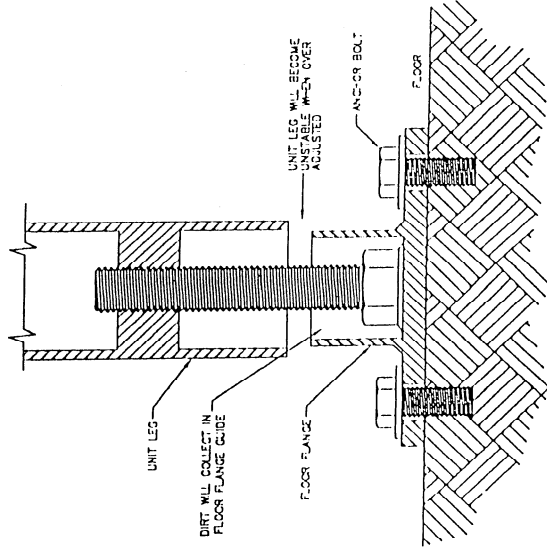
REV.	DESCRIPTION	BY	DATE	REVISED
<p>J.C.PARDO & SONS INC. 1250 REAMES RD. BALTO MD. 21220 PHONE (410) 381-3500 FAX (410) 381-3500</p>				<p>DATE: 9/9/01 DRAWN BY: JES CHECKED BY: [blank] TITLE: 200 GAL INCLINED AGITATOR KETTLE WITH TILT OUT GATOR</p>
<p>200 GAL INCLINED AGITATOR KETTLE WITH TILT OUT GATOR</p>				<p>SCALE: D SHEET NO: 9075-JCP TOTAL SHEETS: 1 of 1</p>

NOTES:

AFTER UNIT IS LEVEL, ANCHOR ALL FLOOR FLANGES TO THE FLOOR BY USING AN ANCHOR BOLT IN EACH HOLE OF THE FLANGES.



CORRECT ADJUSTMENT
OF FLOOR FLANGE



INCORRECT ADJUSTMENT
OF FLOOR FLANGE

J.C.PARDO & SONS INC.



1250 REAMES RD. BALTO MD. 21220
PHONE (410) 381-3600 FAX (410) 391-8042

CHECKED BY:

APPROVED BY:

DRAWN BY: JAY S.

DATE: 4-27-96

SCALE: NONE

2" TO 2 1/2" FLOOR FLANGE
ADJUSTMENT INSTRUCTIONS

This drawing and all information contained therein is the property of J.C. Pardo & Sons, Inc. The drawing and all information is confidential and its use for any other purpose is prohibited. It is located subject to return upon demand and is not to be used directly or indirectly in any way detrimental to J.C. Pardo & Sons.

DRAWING NUMBER:

8576

SIZE:

B

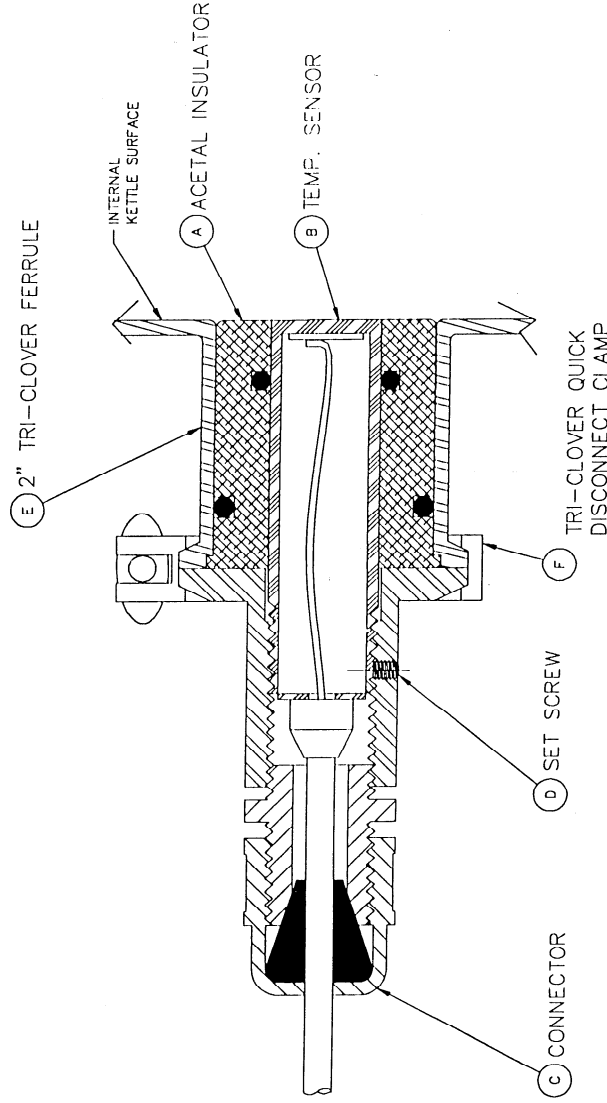
REV.

SHEET

1 of 1

INSTALLATION INSTRUCTIONS

1. INSERT PART "A" INTO KETTLE FERRULE PART "E" SO PART "A" IS FLUSH WITH INTERNAL KETTLE SURFACE $\pm .000$ TO AVOID SCRAPER BLADE FROM INTERFERING WITH TEMPERATURE PROBE.
2. INSERT PART "B" ASSEMBLY INTO PART "A" AND ADJUST UNTIL SURFACE OF PART IS FLUSH WITH INTERNAL KETTLE SURFACE, SO THAT THE SCRAPER BLADE WILL WIPE THE SURFACE CLEAN. THIS MUST OCCUR TO OBTAIN AN ACCURATE TEMPERATURE READING FROM THE PROBE. FOR EASIER ADJUSTMENT OF PROBE, INSTALL O-RINGS AFTER ALL ADJUSTMENTS HAVE BEEN MADE.
3. AFTER STEPS 1 AND 2, INSTALL CLAMP "F" AND CHECK INTERNAL SURFACE WITH PROBE TO FIT THE ABOVE REQUIREMENTS. ADJUST, IF REQUIRED.
4. TIGHTEN BOTH SET SCREWS "D".
5. TIGHTEN CONNECTOR "C".
6. RUN WIRE TO JUNCTION BOX AND ATTACH TO BOX.
7. TEST TEMPERATURE PROBE TO SEE IF TEMPERATURE READING IS ACCURATE.



NOTE:

USE CHESTERTON 622, USDA APPROVED OR EQUIVALENT ON O-RINGS BEFORE INSTALLATION.

JOB #

QTY:

THIS DRAWING AND ALL INFORMATION CONTAINED THEREIN IS THE PROPERTY OF J. C. PARDO & SONS INC. BALTO. MD. 21220	
SCALE: NONE	DATE: 4/27/95
DESIGNED BY: JCS	DRAWN BY: LAURIE YOR
TEMPERATURE SENSOR INSTALLATION	
SHEET 1 OF 1	

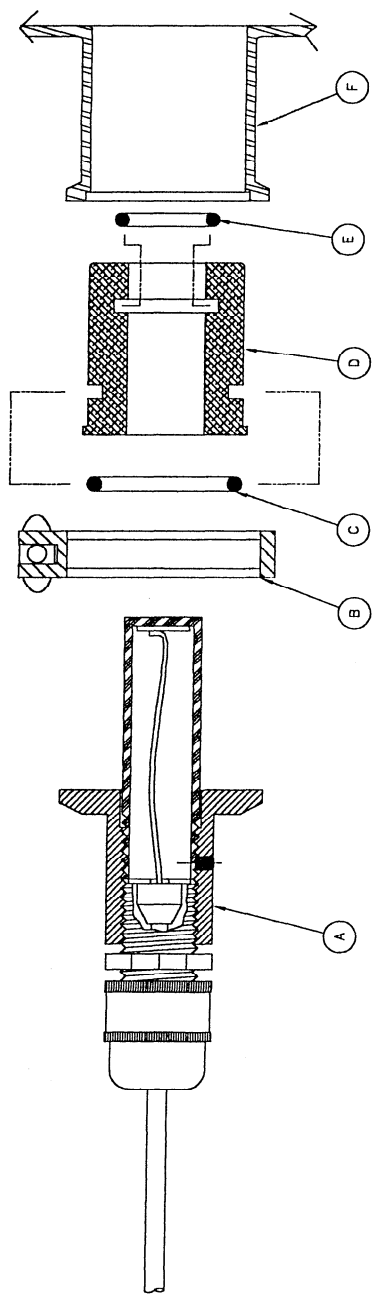
J.C. PARDO & SONS INC.
1250 REAMES RD. BALTO. MD. 21220

SCALE: NONE DATE: 4/27/95

DESIGNED BY: JCS DRAWN BY: LAURIE YOR

TEMPERATURE SENSOR INSTALLATION

SHEET 1 OF 1



CLEANING INSTRUCTIONS

1. BE SURE KETTLE IS EMPTY AND MAIN POWER IS DISCONNECTED.
2. REMOVE CLAMP "B" AND SLIDE TEMP. PROBE ASSEMBLY "A" OUT OF THE SEAL HOLDER "D". PLACE PROBE ASSEMBLY IN HOLDER ON KETTLE LEG.
3. SLIDE SEAL HOLDER "D", OUT OF THE FERRULE "F" AND REMOVE INNER AND OUTER O-RINGS "C" AND "E".
4. CLEAN ALL PARTS THOROUGHLY.

REASSEMBLE INSTRUCTIONS

1. LUBRICATE O-RINGS WITH CHESTERTON 522, USDA APPROVED OR EQUIVALENT BEFORE REASSEMBLING.
2. INSTALL LUBRICATED O-RINGS "C" & "E" INTO SEAL HOLDER "D".
3. INSTALL SEAL HOLDER "D" WITH O-RINGS "C" & "E" INTO FERRULE "F".
4. SLIDE TEMP. PROBE ASSEMBLY "A" INTO SEAL HOLDER "D".
5. REPLACE CLAMP "B".

WARNINGS

1. FAILURE TO PLACE PROBE ASSEMBLY IN HOLDER COULD RESULT IN DAMAGE.
2. DO NOT USE CAUSTIC SODA ON PARTS "C", "D", OR "E" AS THIS WILL RESULT IN DAMAGE.

KETTLE LEG

TEMP SENSOR HOLDER

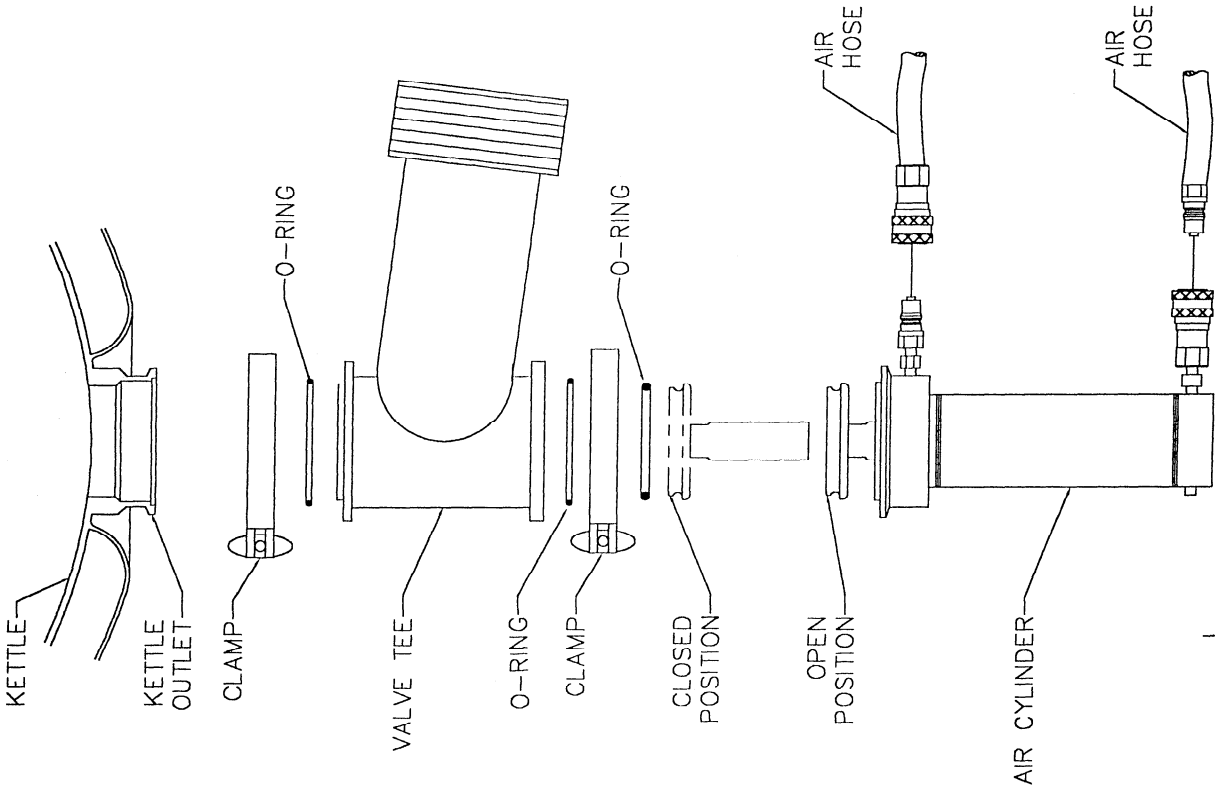
B	ADDED LINE NOTE 2	TJK	6/10/96
A	REDRAWN FROM HAND AND ADDED NOTES.	LY	4/27/95
REV	DESCRIPTION	BY	DATE
REVISIONS			

J.C.PARDO & SONS INC.
 1250 REAMES RD. BALTO MD. 21220
 PHONE (410) 391-5800 FAX (410) 391-9042

DATE IN L.Y. DATE 4/27/95
 DRAWN BY NONE

TEMPERATURE SENSOR CLEANING INSTRUCTIONS
THIS DRAWING IS THE PROPERTY OF J.C. PARDO & SONS INC. IT IS TO BE USED ONLY FOR THE PURPOSES OF WHICH IT WAS DESIGNED. IT IS NOT TO BE REPRODUCED OR TRANSMITTED IN ANY FORM OR BY ANY MEANS, ELECTRONIC OR MECHANICAL, WITHOUT PERMISSION IN WRITING FROM J.C. PARDO & SONS.

SIZE C
 SHEET 8322
 REV B
 1 of 1

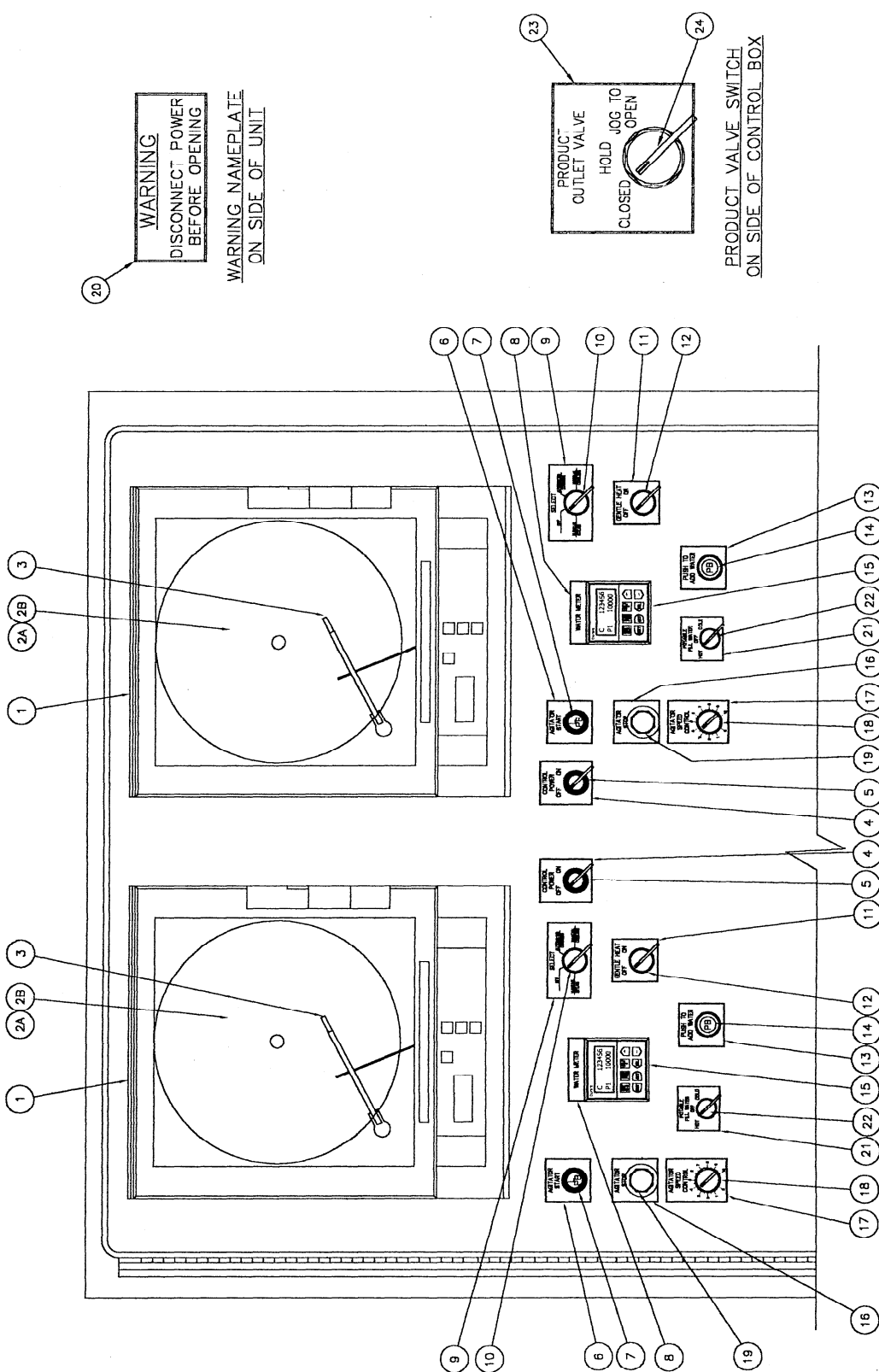


J.C.PARDO INSTALLATION & CLEANING INSTRUCTION FOR PRODUCT VALVE

- 1.) OPEN PRODUCT VALVE.
- 2.) DISCONNECT AIR HOSES.
- 3.) REMOVE AIR CYLINDER.
- 4.) REMOVE VALVE TEE.
- 5.) REMOVE ALL O-RINGS.
- 6.) CLEAN AIR CYLINDER, DO NOT SUBMERGE IN WATER. WIPE CLEAN AND SANITIZE.
- 7.) CLEAN AND SANITIZE TEE AND O-RINGS.
- 8.) GREASE AND REINSTALL O-RINGS.
- 9.) REINSTALL TEE TO KETTLE OUTLET.
- 10.) REINSTALL AIR CYLINDER TO BOTTOM OF TEE.
- 11.) RECONNECT AIR HOSES.
- 12.) O.K. TO CLOSE VALVE AND CHECK FOR ALIGNMENT.

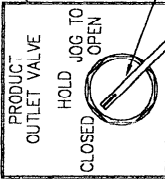
J.C.PARDO & SONS INC. 1250 TRAVELER RD. BALTO MD. 21280 PHONE (410) 591-3000		ORDER BY: SEE DATE: 01/09/01 ORDER NO:	3" J.C.PARDO PRODUCT VALVE CLEANING INSTRUCTION	REV: D DATE:	REV: 9027 DATE:	1 of 1
---	--	--	---	-----------------	--------------------	--------

REV#	DESCRIPTION	BY	DATE
REVISIONS			



WARNING
DISCONNECT POWER
BEFORE OPENING

WARNING NAMEPLATE
ON SIDE OF UNIT



PRODUCT VALVE SWITCH
ON SIDE OF CONTROL BOX

REV.	DESCRIPTION	BY	DATE	J.C. PARDO & SONS INC. 1250 REAMES RD. BALTO MD. 21220 PHONE (410) 581-3800 FAX (410) 581-9042		ORDER BY DATE 3/12/02 APPROVED BY	ORDER NUMBER 11648	REV C	SHEET 1 of 2
REVISIONS				DUAL KETTLE FLOOR MNTD. CONTROL PANEL REPLACEMENT PARTS (WHOLE FOODS ONLY)		THIS DRAWING IS THE PROPERTY OF J.C. PARDO & SONS INC. IT IS TO BE USED ONLY FOR THE PROJECT AND SITE SPECIFICALLY IDENTIFIED. IT IS NOT TO BE REPRODUCED OR TRANSMITTED IN ANY FORM OR BY ANY MEANS, ELECTRONIC OR MECHANICAL, INCLUDING PHOTOCOPYING, RECORDING, OR BY ANY INFORMATION STORAGE AND RETRIEVAL SYSTEM.	REV C	SHEET 1 of 2	

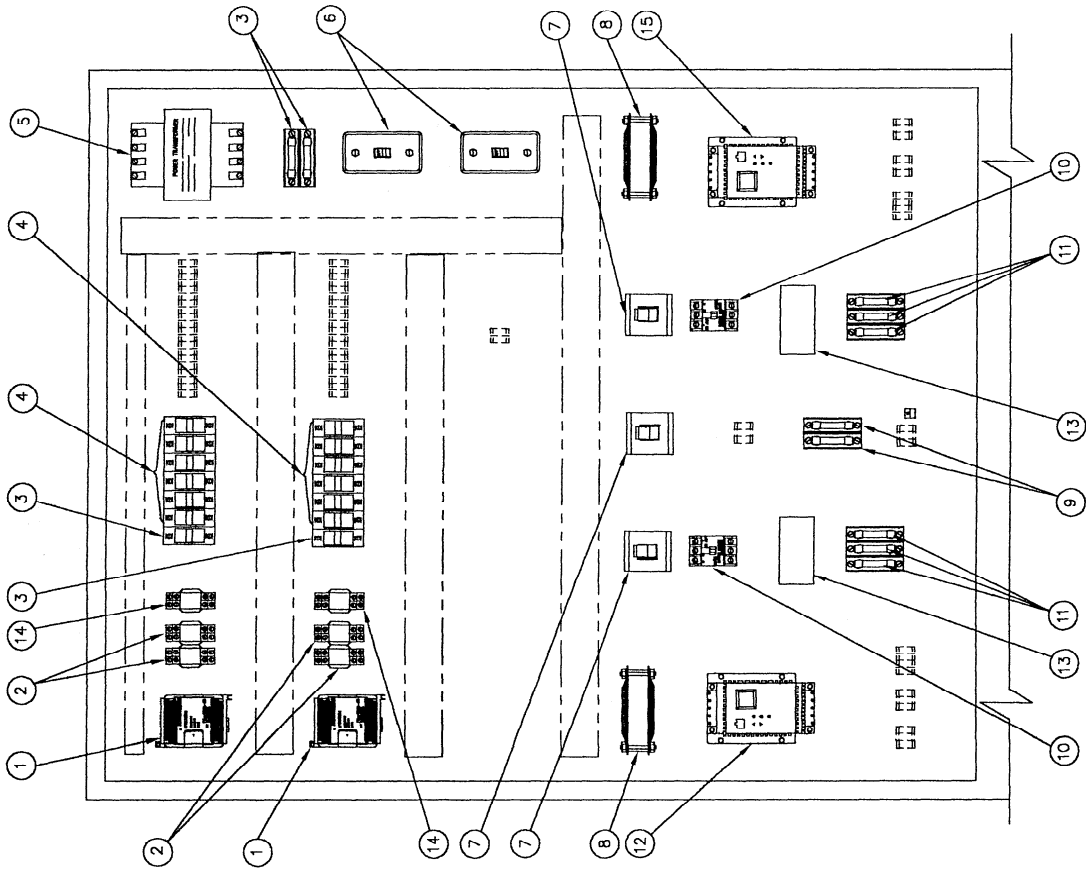
REPLACEMENT PARTS		
ITEM	PART NO.	DESCRIPTION
1	EL8C0-0000042	PARTLOW 8000
-	EL977-7700019	REPLACEMENT PEN MOTOR ITEM #1
-	EL977-7700018	REPLACEMENT CHART MOTOR ITEM #1
-	EL977-7700020	REPLACEMENT TOUCH PAD COVER
-	ELP00-0000037	REPLACEMENT DOOR FOR ITEM #1
-	ELP00-0000036	REPLACEMENT DOOR WINDOW ITEM #1
2A	MSJ00-0000005	24 HOUR CHART PAPER F
2B	MSJ00-0000006	24 HOUR CHART PAPER C
3	MSP00-0000002	RED REPLACEMENT PEN
4	NPYELLOW00110	NAMEPLATE
5	2EP00-8800025	RED LIGHTED TURN SWITCH
-	ELV00-6000001	REPLACEMENT BULB FOR ITEM #5
6	NPYELLOW00103	NAMEPLATE
7	2EP00-8800047	GREEN LIGHTED PUSH BUTTON
-	ELV00-1200001	REPLACEMENT BULB FOR ITEM #7
8	NPYELLOW00116	NAMEPLATE
9	NPYELLOW00111	NAMEPLATE
10	ELP00-8800001	FOUR POSITION SWITCH
11	NPYELLOW00107	NAMEPLATE
12	2EP00-8800006	TWO POSITION SWITCH
13	NPYELLOW00106	NAMEPLATE
14	2EP00-8800007	BLACK PUSH BUTTON
15	EL8C0-0000066	DIGITAL DURANT WATER COUNTER
-	ELV02-5000019	REPLACEMENT .315A FUSE ITEM #15
16	NPYELLOW00104	NAMEPLATE
17	NPYELLOW00115	NAMEPLATE
18	ELP00-8800003	SPEED POT
19	2EP00-8800019	RED MUSHROOM PUSH BUTTON
20	NPRED00000019	NAMEPLATE WARNING
21	NPYELLOW00109	NAMEPLATE
22	2EP00-8800022	THREE POSITION SWITCH
23	NPYELLOW00241	NAMEPLATE
24	2EP00-8800044	THREE POSITION SWITCH

REV.	DESCRIPTION	BY	DATE	REVISIONS
J.C.PARDO & SONS INC. 1250 REAMES RD. BALTO MD. 21280 PHONE (410) 981-9800 FAX (410) 981-9048				ORDER BY APPROVED BY
ORDER IN DATE 3/12/02 QUANTITY				DUAL KETTLE FLOOR MNTD. CONTROL PANEL REPLACEMENT PARTS (WHOLE FOODS ONLY)
ORDER NO. JCS DATE 3/12/02 QUANTITY				ORDER NUMBER 11648
ORDER BY APPROVED BY				REV. 2 of 2

THIS ORDER IS VALID FOR THE WHOLE FOODS STORES ONLY. THE WHOLE FOODS STORES ARE NOT RESPONSIBLE FOR THE DELIVERY OF THIS ORDER. THE WHOLE FOODS STORES ARE NOT RESPONSIBLE FOR THE DELIVERY OF THIS ORDER. THE WHOLE FOODS STORES ARE NOT RESPONSIBLE FOR THE DELIVERY OF THIS ORDER.

UNIVERSAL REPLACEMENT PARTS

ITEM	PART NO.	DESCRIPTION
1	ELBCO-0000046	PROGRAMMABLE CONTROLLER
2	ELPSW-0000002	RELAY, 120V
3	ELPSW-0000003	REPLACEMENT BASE FOR ITEM #2
4	ELV02-5000001	5 AMP FUSE
4	ELV02-5000002	1 AMP FUSE
5	ELV10-0000001	TRANSFORMER - 208/380V SYSTEM
6	ELPSW-0000007	LOW VOLTAGE DISCONNECT
7	ELPSW-0000001	HIGH VOLTAGE DISCONNECT
8	2EP00-0000001	FAN WITH SHROUDS
9	ELV06-0000002	8 AMP FUSE
10	ELPSW-0000004	MOTOR CONTACTOR
11	ELV06-0000007	20 AMP FUSE
12	ELH02-0000008	2 HP INVERTER
13	ELV00-0000024	LINE REACTOR 2-3HP
14	ELPSW-0000021	RELAY, 24V
-	ELPSW-0000003	REPLACEMENT BASE FOR ITEM #14
15	ELH03-0000010	3 HP INVERTER



J.C.PARDO & SONS INC.
 BALTO MD, 21220
 PHONE (410) 891-8800
 FAX (410) 891-8043

DESIGNED BY: _____
 APPROVED BY: _____
 DRAWN BY: JBS
 DATE: 3/12/02
 REASON: NONE

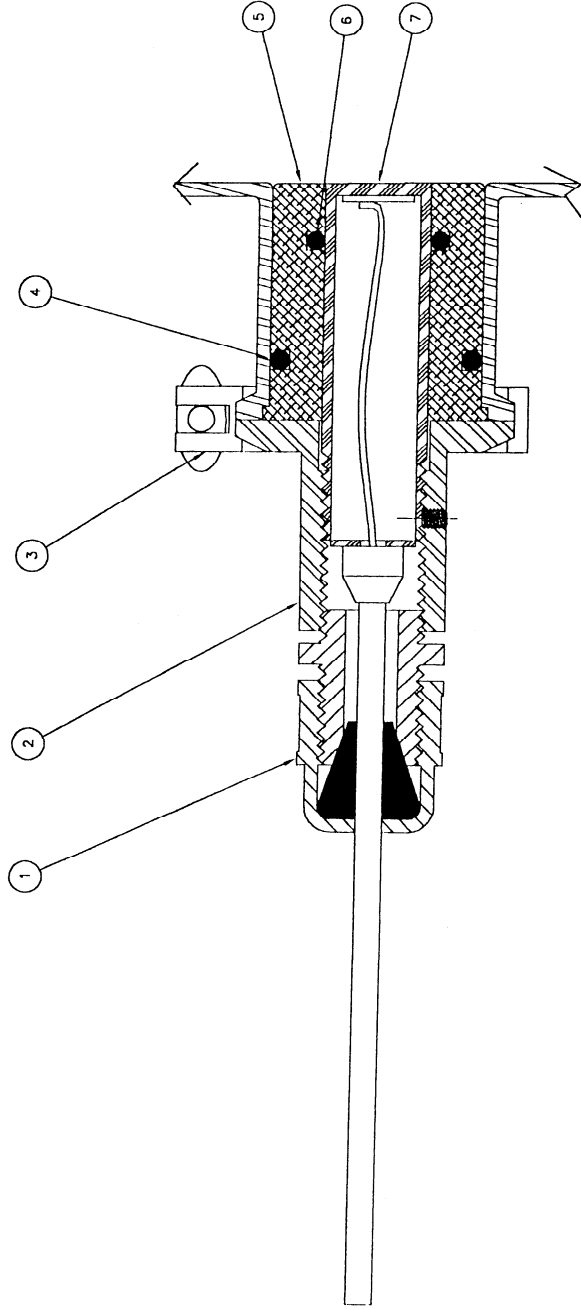
INTERNAL DUAL CONTROL PANEL 208V
 INCLINED KETTLE W/TILT AGIT. (WHOLE FOODS)
 REV: C
 DRAWING NUMBER: 11649
 SHEET: 1 of 1

REV.	DESCRIPTION	BY	DATE
	REVISIONS		

This drawing and all information contained therein is the property of J.C. Pardo & Sons Inc. and shall remain confidential. No part of this drawing is to be reproduced or transmitted in any form or by any means, electronic, mechanical, photocopying, recording, or by any information storage and retrieval system, without the prior written permission of J.C. Pardo & Sons.

REPLACEMENT PARTS

ITEM	PART NO.	DESCRIPTION
1	ELC00-0000011	WIRE RESTRAINT
2	TSSENSOR00001	CAP ASSEMBLY
3	DF502-0000002	2" TRI CLAMP
4	SE3ORING00004	OUTER O-RING
5	SRSENSOR00001	SEAL RETAINER
6	SE3ORING00005	INNER O-RING
7	TSSENSOR00002	TEMPERATURE SENSOR

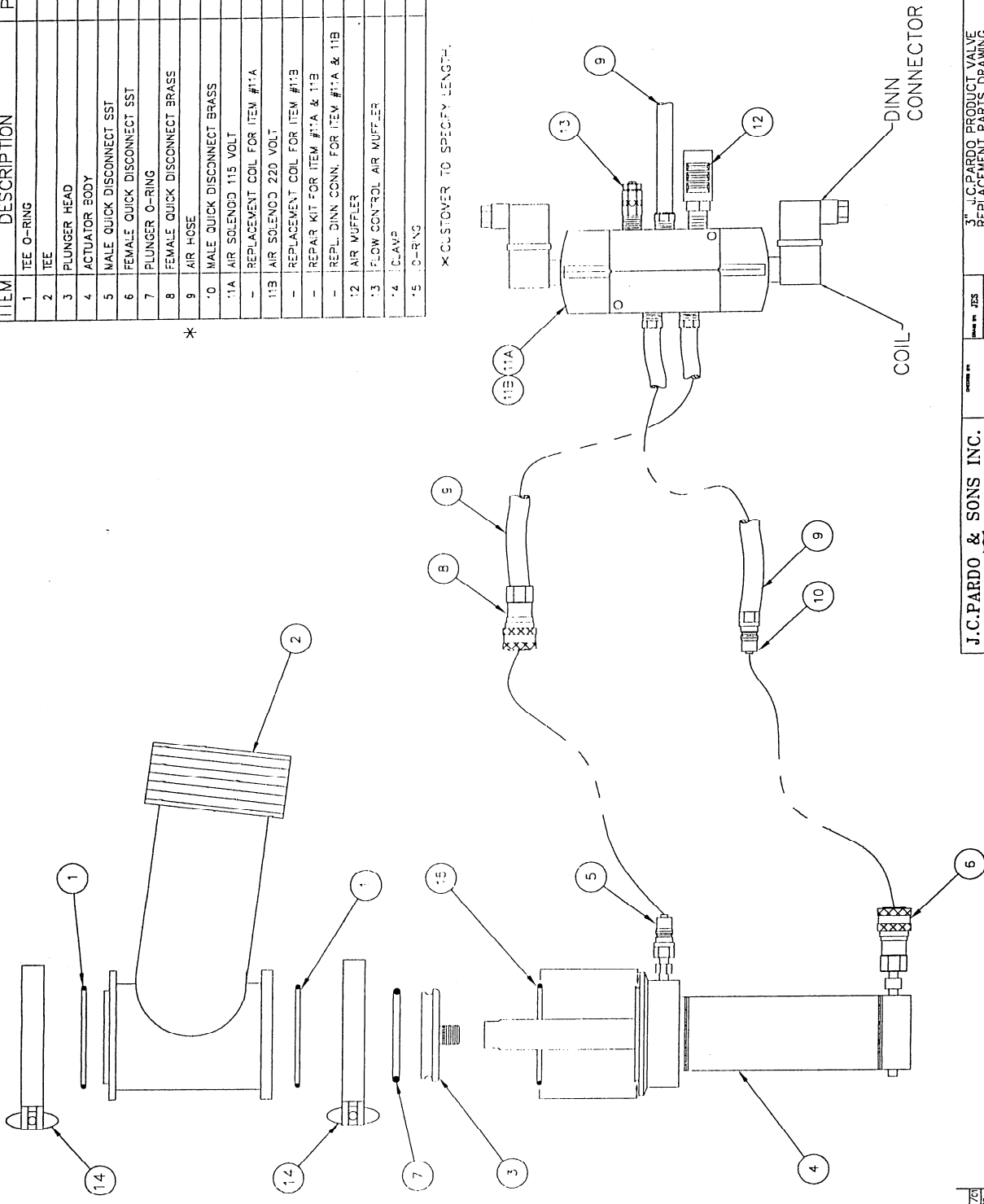


JOB # _____ QTY: _____
J.C.PARDO & SONS INC.
 1250 REAMES RD. BALTO. MD. 21220
OUR NONE
DATE 9-15-94
APPROVED BY
BY T.M. KAHL
REPLACEMENT PARTS, RTD TEMP. SENSOR
 SHEET 1 OF 1 **C** 11039

REPLACEMENT PARTS

ITEM	DESCRIPTION	PART NUMBER
1	TEE O-RING	SE3ORING00011
2	TEE	1FS03-0000006
3	PLUNGER HEAD	1FS02-7500014
4	ACTUATOR BODY	ARS03-0000001
5	MALE QUICK DISCONNECT SST	ARS00-1200002
6	FEMALE QUICK DISCONNECT SST	ARS00-1200003
7	PLUNGER O-RING	SE3ORING00012
8	FEMALE QUICK DISCONNECT BRASS	1HB00-1200002
9	AIR HOSE	AR700-2500002
10	MALE QUICK DISCONNECT BRASS	1HB00-1200001
11A	AIR SOLENOID 115 VOLT	AR800-2500013
-	REPLACEMENT COIL FOR ITEM #11A	SP988-8800027
11B	AIR SOLENOID 220 VOLT	AR800-2500014
-	REPLACEMENT COIL FOR ITEM #11B	SP988-9900028
-	REPAIR KIT FOR ITEM #11A & 11B	SP998-9900074
-	REPL. DINN CONN. FOR ITEM #11A & 11B	ELP0C-0000032
12	AIR MUFFLER	ARP00-2500001
13	FLOW CONTROL AIR MUFFLER	AR500-2500028
14	CLAMP	DFSC3-0000001
15	O-RING	SE3ORING00042

* X CUSTOMER TO SPECIFY LENGTH.



REV.	ADDED PARTS	DATE
1	155 11/28/01	1971 DATE
REVISIONS		

J.C. PARDO & SONS INC.
 1250 REMADES RD. BALTO MD. 21220
 PHONE (410) 381-8800 FAX (410) 381-8800

DESIGNED BY JES
 DATE 12/5/00
 DRAWING NO. NONE

3" J.C. PARDO PRODUCT VALVE
 REPLACEMENT PARTS DRAWING
 PART NO. 11549
 REV. D
 SHEET 1 OF 1

REPLACEMENT PARTS LIST		
ITEM	PART NO.	DESCRIPTION
1	PBB00-7500018	FILL FAUCET WITH SWING SPOUT
2	VAB01-2500001	100 PSI SAFETY VALVE
3	ARB00-5000001	AIR QUICK DISCONNECT
4	DUH03-0000017	3 HP DRIVE UNIT
-	DU903-0000012	REPLACEMENT MOTOR FOR ITEM #4
-	DU902-0000032	REPLACEMENT GEAR BOX FOR ITEM #4
5	MSS02-0000001	SET COLLAR
6	1FW05-2500001	DRIP SHIELD
7	2EB00-0000001	MOTOR KILL PROX. SWITCH & CORDSET
-	EL8SW-0000013	REPLACEMENT PROX. SWITCH
-	ELP00-0000043	RELACEMENT CORDSET
8	HWS01-0000003	TOP/BOTTOM PIN WITH SNAP RINGS
9	NPYELLOW00256	NAMEPLATE
10	2EP01-25A0014	RED MUSHROOM PUSH BUTTON
11	2EP01-25A0001	YELLOW PUSH BUTTON
12	2EP01-25A0002	BLUE PUSH BUTTON
13	HWS00-0000022	RETAINING RING
14	MSX00-0000007	SCRAPER BLADE
15	RBF00-0000001	RETAINING ROD
16	1FK02-7500003	IDLER BEARING
-	TOS00-0000001	BEARING REMOVAL TOOL FOR ITEM #16

REPLACEMENT PARTS LIST		
ITEM	PART NO.	DESCRIPTION
17	FAS01-5000001	IDLER SLEEVE
18	ARB00-5000004	AIR PILOTTED CHECK VALVE
19	ARB00-0000006	AIR CYLINDER
20	AR700-2500002	AIR HOSE
21	HYC00-0000013	YOKE
22	ARB00-2500031	90° AIR FITTING
23	ARF00-2500003	AIR TUBING
24	ARB00-2500034	STRAIGHT AIR FITTING
25	ARB00-3700006	AIR REGULATED CHECK VALVE
26	AR800-2500017	AIR SILENCER
-	SP989-9900083	REPAIR KIT FOR ITEM #26
-	SP988-8800033	REPLACEMENT COIL FOR ITEM #26
27	ELP00-0000044	DINN CONNECTOR
28	ARF00-2500001	AIR MUFFLER
29	1FS00-0000047	REMOVABLE BREAKER BAR
30	BCZ01-0000005	BRONZE BUSHING
DRAWINGS LIST		
ITEM	DRAWING NO.	DESCRIPTION
Y	C-11549	PRODUCT VALVE
Z	C-11039	TEMPERATURE SENSOR ASSEMBLY

* CUSTOMER TO SPECIFY LENGTH

REV.	DESCRIPTION	BY	DATE
	REVISIONS		

J.C.PARDO & SONS INC.
 1800 BRAUNERS RD. BALITO MD. 21220
 PHONE (410) 561-5666 FAX (410) 561-8600

DATE OF ISS
 DATE 3/21/02
 MAKE NONE

IA-MKDL-200-CC-W/ TILT OUT AGITATOR
 REPLACEMENT PARTS

11852
 1 of 2

ITEM	PART NO.	DESCRIPTION
1	PBB00-750001B	FILL FAUCET WITH SWING SPOUT
2	VAB01-0000007	100 PSI SAFETY VALVE
3	ARB00-5000001	AIR QUICK DISCONNECT
4	DUH02-0000023	2 HP DRIVE UNIT
-	DU902-0000033	REPLACEMENT MOTOR FOR ITEM #4
-	DU901-5000012	REPLACEMENT GEAR BOX FOR ITEM #4
5	MSS01-5000001	SET COLLAR
6	1FW04-5000001	DRIP SHIELD
7	2E800-0000001	MOTOR KILL PROX. SWITCH & CORDSET
-	ELBSW-0000013	REPLACEMENT PROX. SWITCH
-	ELP00-0000043	REPLACEMENT CORDSET
8	HWS01-0000003	TOP/BOTTOM PIN WITH SNAP RINGS
9	NPYELLOW00256	NAMEPLATE
10	2EP01-25A0014	RED MUSHROOM PUSH BUTTON
11	2EP01-25A0001	YELLOW PUSH BUTTON
12	2EP01-25A0002	BLUE PUSH BUTTON
13	HWS00-0000022	RETAINING RING
14	MSX00-0000007	SCRAPER BLADE
15	RFP00-0000001	RETAINING ROD
16	1-K02-7500003	IDLER BEARING
-	TOS00-0000001	BEARING REMOVAL TOOL FOR ITEM #16

ITEM	PART NO.	DESCRIPTION
17	FAS01-5000001	IDLER SLEEVE
18	ARB00-5000004	AIR PILOTTED CHECK VALVE
19	ARB00-0000006	AIR CYLINDER
20	AR700-2500002	AIR HOSE
21	HYC00-0000013	YOKE
22	ARB00-25000031	90° AIR FITTING
23	ARP00-2500003	AIR TUBING
24	ARB00-25000034	STRAIGHT AIR FITTING
25	ARB00-3700006	AIR REGULATED CHECK VALVE
26	ARB00-25000017	AIR SILENTOID
-	SP999-9900083	REPAIR KIT FOR ITEM #26
-	SP988-8800033	REPLACEMENT COIL FOR ITEM #26
27	ELP00-0000044	CINN CONNECTOR
28	ARP00-2500001	AIR MUFFLER
29	1FS00-0000046	REMOVABLE BREAKER BAR
30	B6Z01-0000005	BRONZE BUSHING

DRAWINGS LIST

ITEM	DRAWING NO.	DESCRIPTION
Y	C-11549	PRODJCT VALVE
Z	C-11039	TEMPERATURE SENSOR ASSEMBLY

* CUSTOMER TO SPECIFY LENGTH

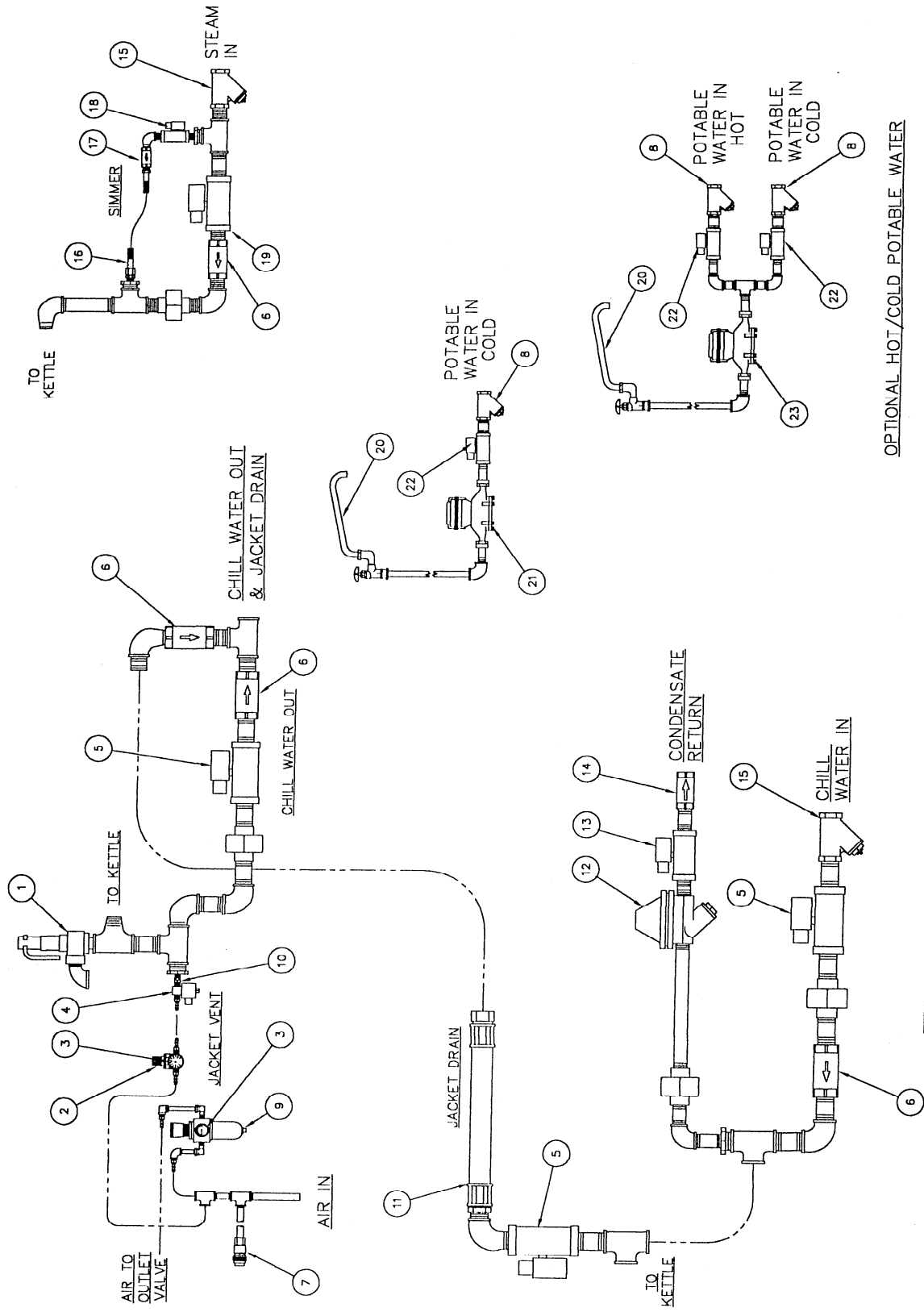
REV.	DESCRIPTION	BY	DATE
	REVISIONS		

J.C.PARDO & SONS INC.
 1260 REAMES RD. BALTO MD. 21220
 PHONE (410) 381-3600 FAX (410) 381-3600

ORDER NO. _____
 QUOTE NO. _____
 DATE 3/21/02
 ORDER NOVE

IA-MKDL-100-CC W/ TILT OUT AGITATOR
 REPLACEMENT PARTS

REV. 11653
 D
 2 of 2



OPTIONAL HOT/COLD POTABLE WATER

REV.	DESCRIPTION	BY	DATE	REVISIONS
<p>J.C. PARDO & SONS INC. 1250 REAMES RD. BALTO MD. 21220 PHONE (410) 381-9600 FAX (410) 381-9648</p>				
DESIGNED BY	JES	DATE	3-29-01	REVISIONS
APPROVED BY				
ORDER NUMBER	HA-MKDL-100-CC PLUMBING W/DINN CONNECTORS REPLACEMENT PARTS	REV.	C	SHEET
			11610	1

This drawing is an illustration of a typical installation. It is not intended to be a substitute for the manufacturer's instructions. It is subject to change without notice and is not to be used for any other purpose without the written consent of J.C. Pardo & Sons, Inc.

ITEM	PART NO.	DESCRIPTION
1	VAB01-0000007	100 PSI SAFETY VALVE
2	ARB00-3700002	MINI AIR REGULATOR
3	ARB00-2500004	REPLACEMENT GAUGE
4	ELB00-2500013	JACKET VENT SOLENOID
-	ELP00-0000000	REPLACEMENT DINN CONN. FOR ITEM #4
-	SP999-9900064	REPLACEMENT KIT FOR ITEM #4
-	SP988-8800002	REPLACEMENT COIL FOR ITEM #4
5	ELB01-0000013	CHILL WATER IN/OUT & JACKET DRAIN SOL.
-	ELP00-0000000	REPLACEMENT DINN CONN. FOR ITEM #5
-	SP999-9900005	REPLACEMENT KIT FOR ITEM #5
-	SP988-8800002	REPLACEMENT COIL FOR ITEM #5
6	MSB01-0000003	BALL CONE CHECK VALVE
7	ARB00-5000001	AIR QUICK DISCONNECT
-	MSB00-7500006	50 MESH STRAINER
-	MSB00-7500006	REPLACEMENT SCREEN FOR ITEM #8
9	ARB00-2500015	AIR REGULATOR
10	VAB00-2500001	NO LEAK CHECK VALVE
11	PED01-0000001	JACKET DRAIN HOSE
12	MSC00-7500002	STEAM TRAP
-	SP999-9900017	REPAIR KIT FOR ITEM #12
13	ELB00-7500016	CONDENSATE SOLENOID
-	ELP00-0000000	REPLACEMENT DINN CONN. FOR ITEM #13
-	SP999-9900007	REPLACEMENT KIT FOR ITEM #13
-	SP988-8800003	REPLACEMENT COIL FOR ITEM #13

ITEM	PART NO.	DESCRIPTION
14	MSB00-7500004	BALL CONE CHECK VALVE
15	MSB01-0000001	50 MESH STRAINER
-	MSB01-0000004	REPLACEMENT SCREEN FOR ITEM #15
16	PBF00-5000001	SIMMER FLEX LINE
17	MSB00-5000005	BALL CONE CHECK VALVE
18	ELB00-5000016	SIMMER SOLENOID
-	ELP00-0000000	REPLACEMENT DINN CONN. FOR ITEM #18
-	SP999-9900006	REPLACEMENT KIT FOR ITEM #18
-	SP988-8800003	REPLACEMENT COIL FOR ITEM #18
19	ELB01-0000014	STEAM IN SOLENOID
-	ELP00-0000000	REPLACEMENT DINN CONN. FOR ITEM #19
-	SP999-9900008	REPLACEMENT KIT FOR ITEM #19
-	SP988-8800003	REPLACEMENT COIL FOR ITEM #19
20	PBB00-7500018	FILL FAUCET
21	ELB00-7500017	DIGITAL COLD WATER METER
22	ELB00-7500015	POTABLE WATER IN SOLENOID
-	ELP00-0000000	REPLACEMENT DINN CONN. FOR ITEM #22
-	SP999-9900004	REPLACEMENT KIT FOR SOLENOID #22
-	SP988-8800002	REPLACEMENT COIL FOR SOLENOID #22
23	ELB00-7500018	DIGITAL HOT WATER METER (OPTIONAL)

REPLACEMENT PARTS LIST

REPLACEMENT PARTS LIST

J.C.PARDO & SONS INC.
 1250 REAMERS RD. BALTO MD. 21220
 PHONE (410) 391-3600 FAX (410) 391-6042

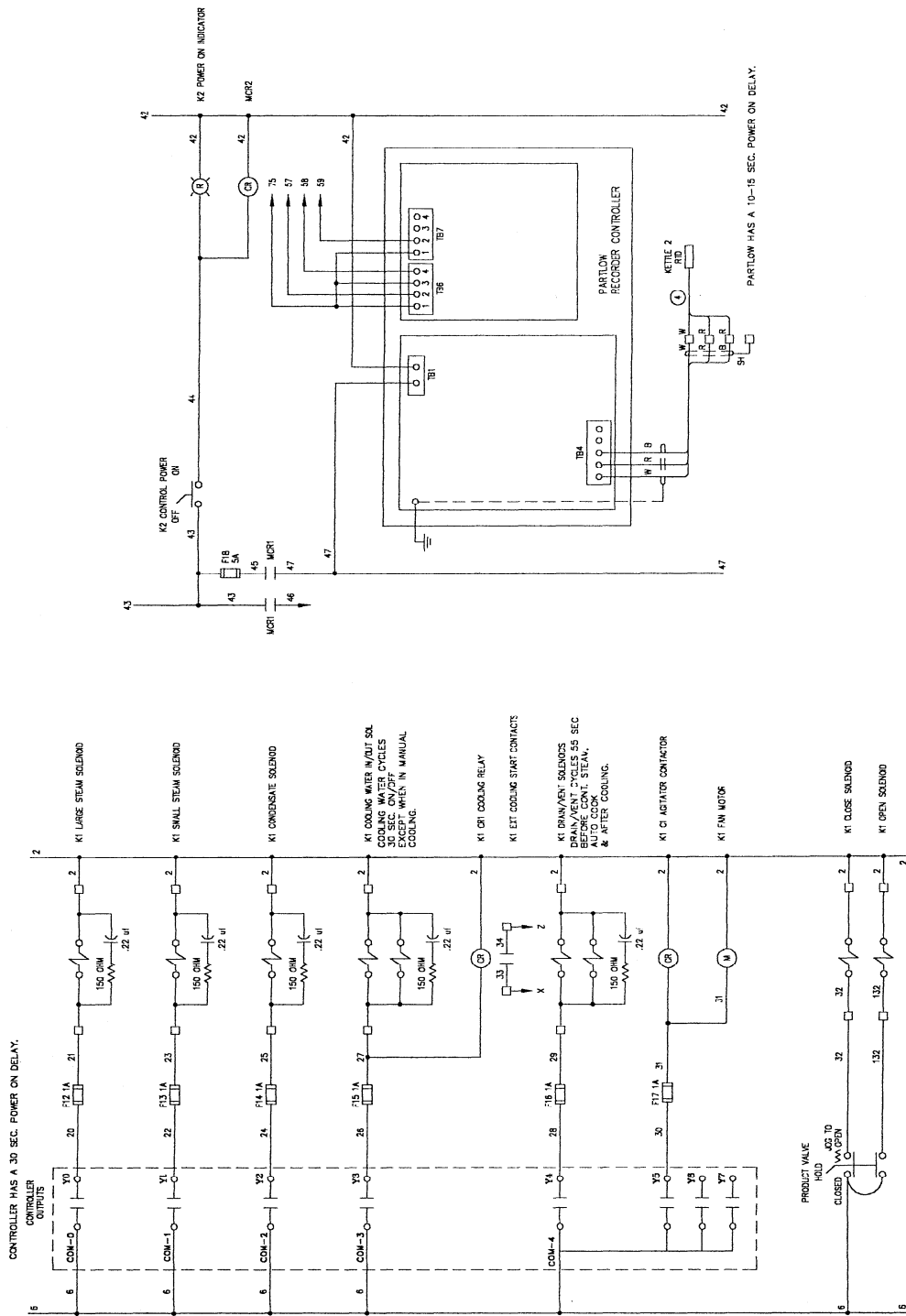
REV.	DESCRIPTION	BY	DATE
	REVISIONS		

DESIGNED BY: JES
 DATE: 3-29-01
 APPROVED BY: NONE

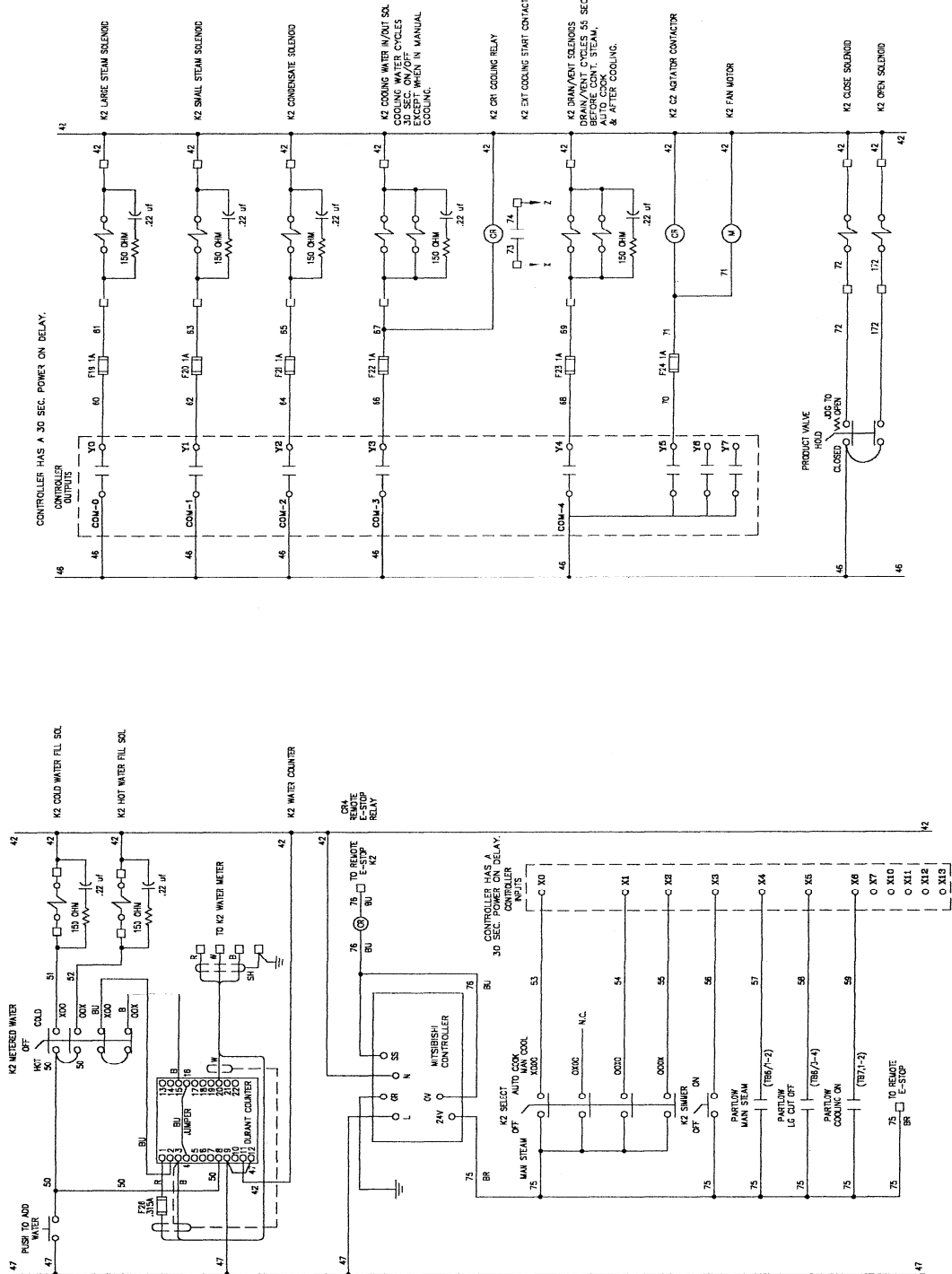
HA-MKDL-100-CC PLUMBING W/DINN CONNECTORS REPLACEMENT PARTS

REV: C
 DRAWING NUMBER: 11610
 2 of 2

The company is not responsible for any errors or omissions in this drawing. It is the user's responsibility to verify all dimensions and specifications before use. The company is not responsible for any damage or injury resulting from the use of this drawing.



REV.	DESCRIPTION	BY	DATE
	REVISIONS		
J.C. PARDO & SONS INC. 1850 REAMES RD. BALTO MD. 21220 PHONE (410) 381-3800 FAX (410) 391-0842			
DESIGNED BY	JES	DATE	01/02/02
APPROVED BY		SCALE	NONE
ELECTRICAL SCHEMATIC 208/230/380/460V DUAL TANK CONTROL PANEL W/RELAYS		SIZE	C
DRAWING NUMBER		REV.	3 of 5
		REV.	ES-0244

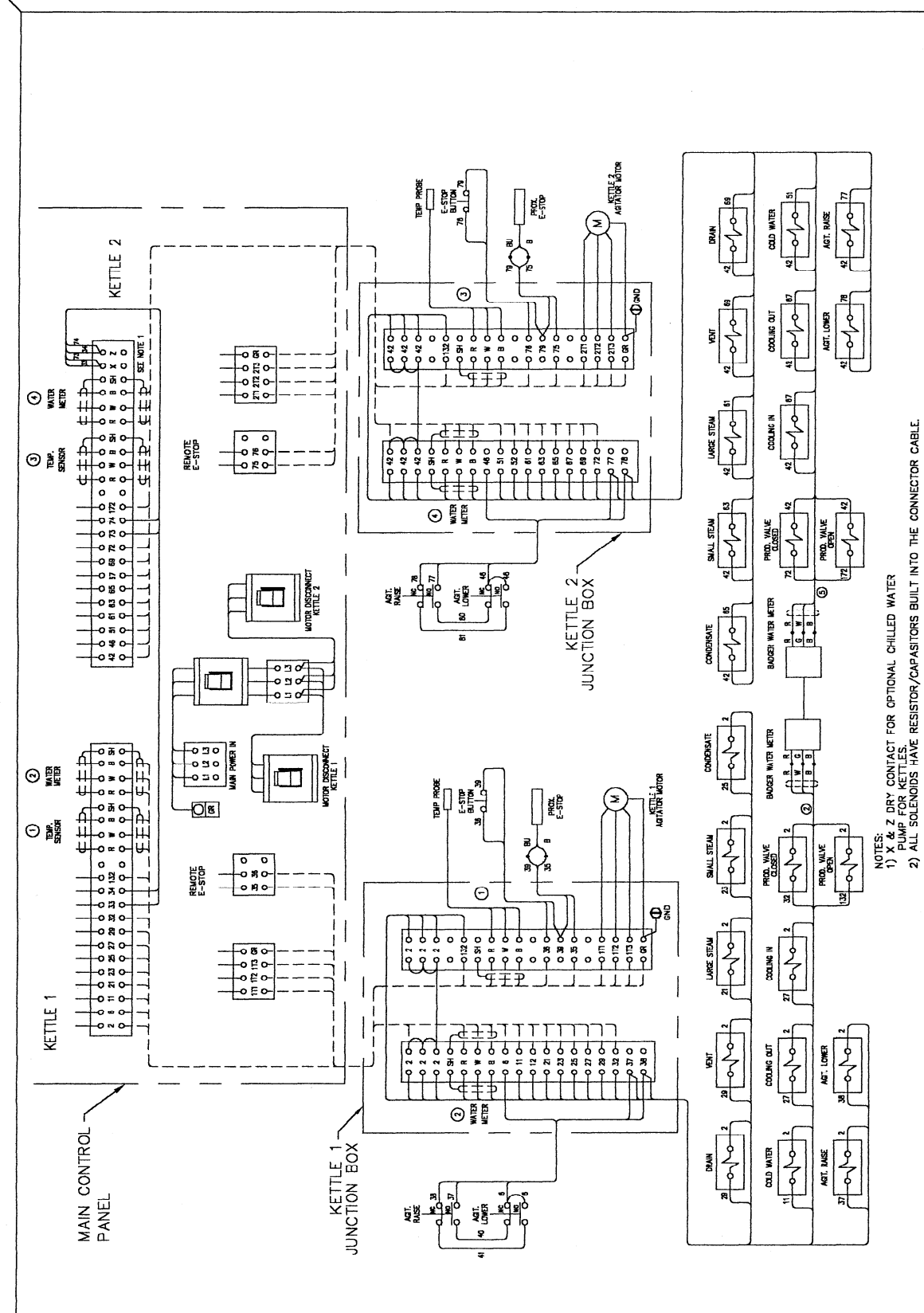


CONTROLLER HAS A 30 SEC. POWER ON DELAY.

REV.	DESCRIPTION	BY	DATE
REVISIONS			

J.C. PARDO & SONS INC. 1250 REAMES RD. BALTO MD. 21220 PHONE (410) 381-3600		DRAWN BY: JES DATE: 01/02/02 SCALE: NONE	CHECKED BY: APPROVED BY:
ELECTRICAL SCHEMATIC 208/230/380/460V DUAL IAK CONTROL PANEL W/RELAYS		SHEET ES-0244 4 of 5	NAME: JES REV: C

THIS SCHEMATIC IS THE PROPERTY OF J.C. PARDO & SONS INC. IT IS TO BE USED ONLY FOR THE PROJECT AND SITE SPECIFICALLY IDENTIFIED HEREON. IT IS NOT TO BE REPRODUCED, COPIED, OR TRANSMITTED IN ANY MANNER WITHOUT THE WRITTEN PERMISSION OF J.C. PARDO & SONS INC.



NOTES:
 1) Z DRY CONTACT FOR OPTIONAL CHILLED WATER PUMP FOR KETTLES.
 2) ALL SOLENOIDS HAVE RESISTOR/CAPACITORS BUILT INTO THE CONNECTOR CABLE.

REV.	DESCRIPTION	BY	DATE	REVISIONS

J.C. PARDO & SONS INC. 1250 REAMES RD. BALTO MD. 21220 PHONE (410) 381-8000	DESIGNED BY JES	DATE 01/02/02	APPROVED BY NONE	DRAWING NUMBER ES-0244	SHEET 5 of 5
---	--------------------	------------------	---------------------	---------------------------	-----------------

ELECTRICAL SCHEMATIC 208/230/380/460V
 DUAL TANK CONTROL PANEL W/RELAYS

The drawing and information contained therein are the property of J.C. Pardo & Sons, Inc. and are not to be reproduced, stored in a retrieval system, or transmitted in any form or by any means, electronic, mechanical, photocopying, recording, or by any information storage and retrieval system, without the prior written permission of J.C. Pardo & Sons, Inc.