

HA Series Gas Mixer Kettles

Model HA-MKGL-T-CC with Remote Controls

Quick Reference and Start Up Guide

(November 2020)



TABLE OF CONTENTS

Component Equipment Overview.....	2-3
Installation Overview.....	4
Standard Control Console.....	5
HASGCH Remote Controls.....	6
TCE-DTCI Controls.....	7
GMC/LMC1 Water Meter.....	8

HA-MKGL-TCC EQUIPMENT OVERVIEW



1. Agitator Motor.
2. Temperature Probe Sensor.
3. 3" Air Piston Valve for Hose Connection to MFS Food Pump.
4. Water Level Sight Glass Gauge.
5. Vacuum Pressure Gauge (needle should be in Green zone when cold).
6. Kettle Temperature Control. Set at number 10 when using the TCR-DTCI control option.
7. Water Meter Valve (for GMC1 Water Meter Option).
8. Model Number, Serial Number location
9. Water Meter Kettle Spout used for GMC1 Water Meter Option. Hang on kettle rim when in use.
10. Quick Disconnect for MFS Food Pump Air Hose.
11. Incoming Air Connection for Kettle.
12. Adjustable Flanged Feet. Kettle must be level and bolted to floor.
13. Two Piece Spring Assist Cover with Safety Screen
14. Micro Switch, stops agitator when cover is lifted

HA-MKGL-TCC EQUIPMENT OVERVIEW



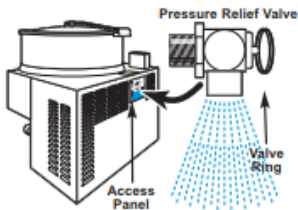
GAS FLUE (LEFT REAR OF UNIT)

Keep gas flue free from obstruction, do not spray or allow water down flue.



LOUVERED PANELS

Mixer kettle has louvered panels on rear and right sides. Do not spray with water.



PRESSURE RELIEF VALVE

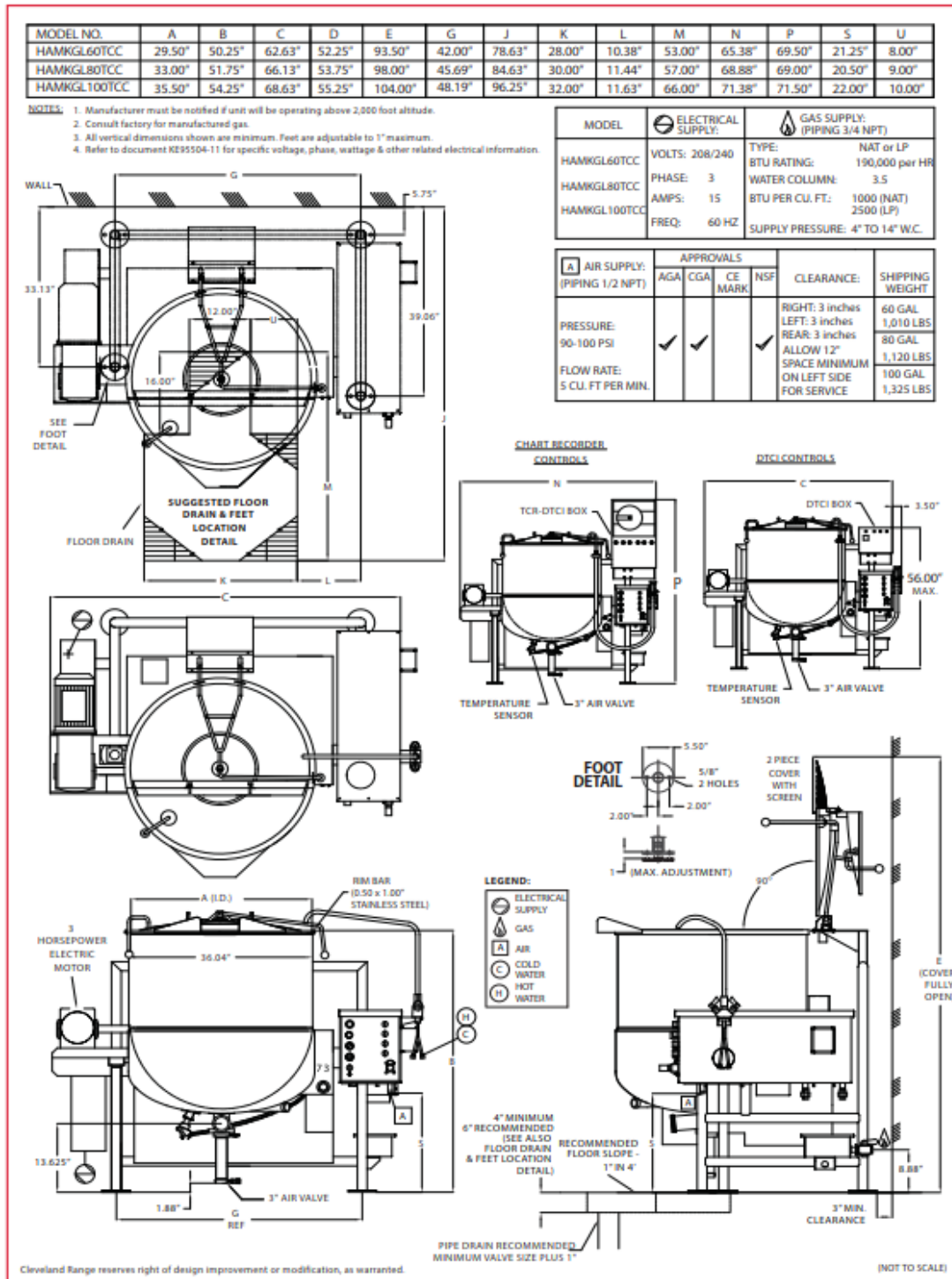
Access panel located at the back of the mixer kettle. To be used to vent kettle when pressure gauge is in the "Vent Air" zone. See manual for instructions



KETTLE GASKET

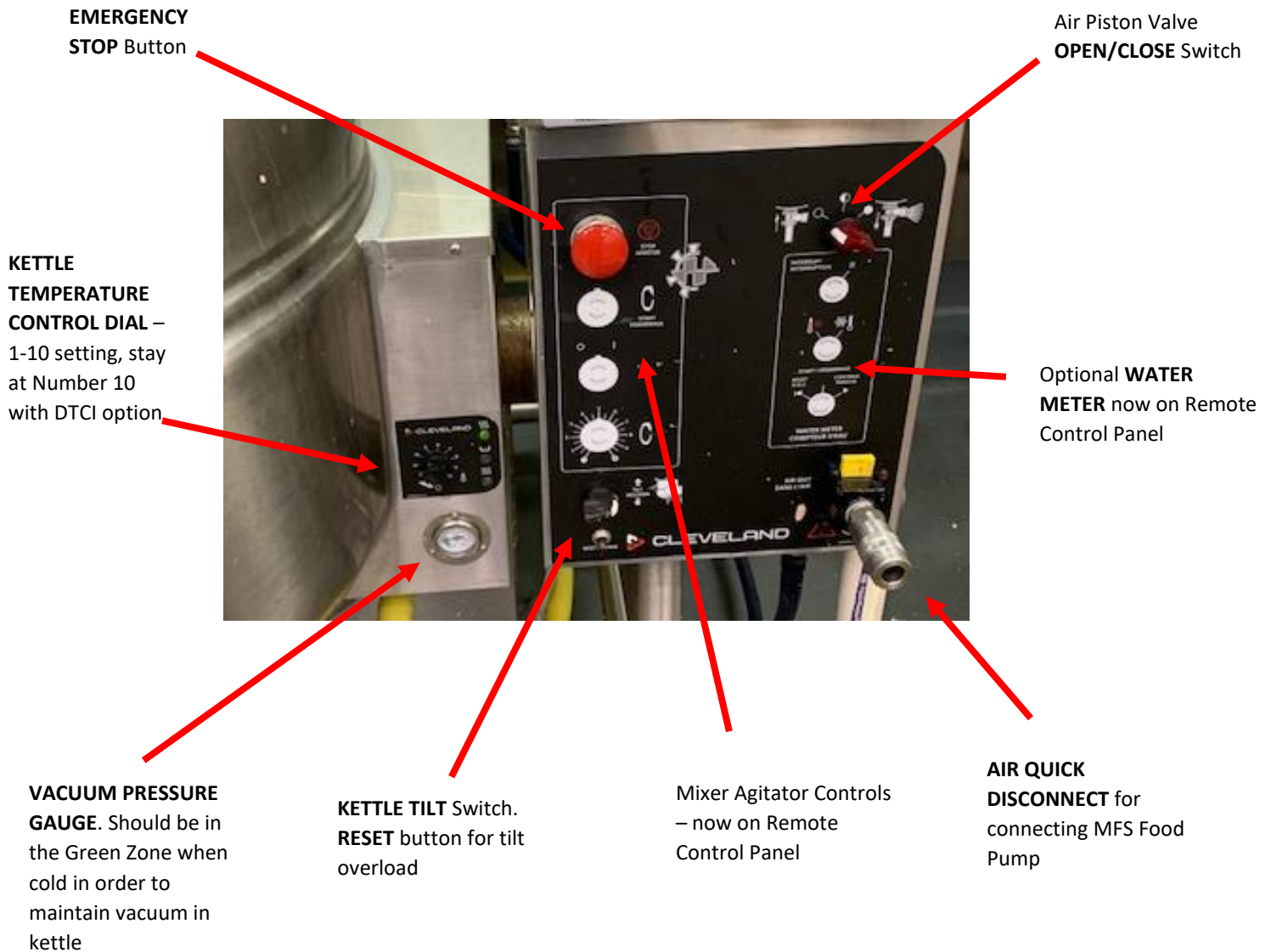
Ensure gasket is maintained properly and replaced if damaged.

HA-MKGL-TCC – INSTALLATION OVERVIEW



HA-MKGL-TCC STANDARD CONTROLS (RIGHT CONSOLE)

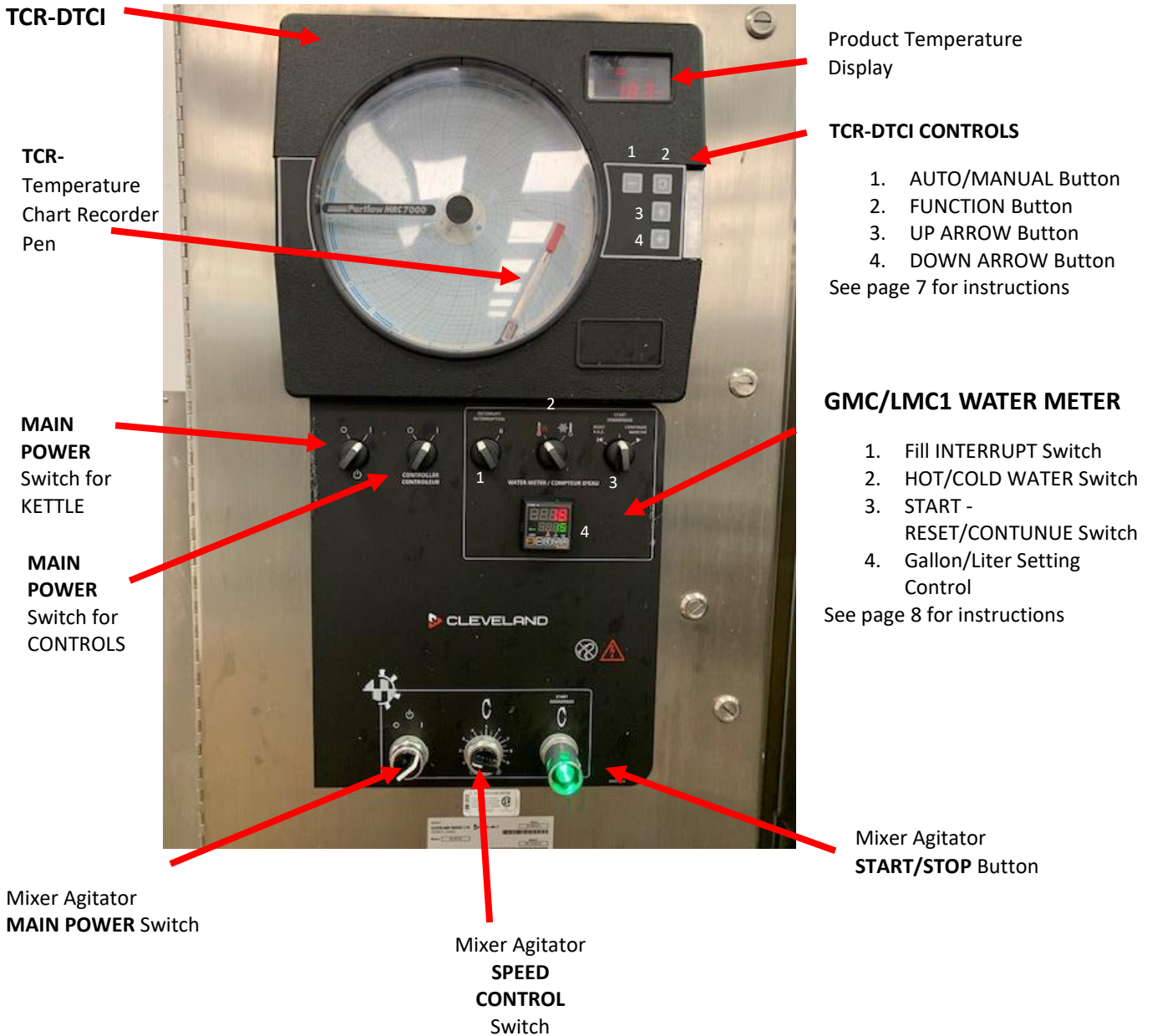
Photo below is shown when ordered with Remote or Console Mounted TCR-DTCl Temperature Chart Recorder (TCR) AND Digital Temperature Control & Indicator (DTCl) and Water Meter (GMC/LMC1) Water Meter.



HASGSH - REMOTE CONTROLS

TCR-DTCI TEMPERATURE CHART RECORDER AND DIGITAL TEMPERATURE CONTROL & INDICATOR

GMC/LMC-1: WATER METER (GALLONS/LITERS)



SETTING THE TCR-DTCI PRODUCT TEMPERATURE CONTROL




TCR-DTCI CONTROL PANEL

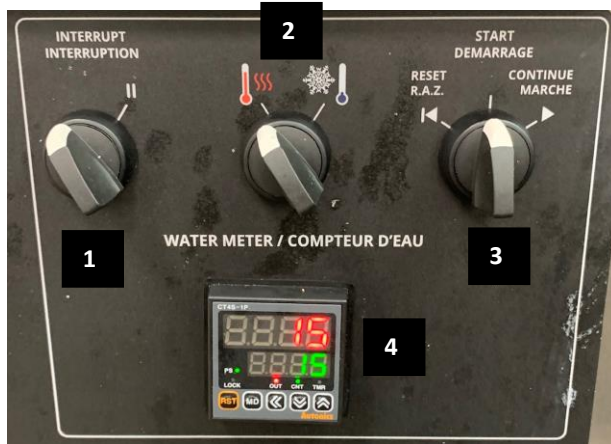
1. **TEMPERATURE** Display
2. **AUTO/MANUAL** Button
(Temperature Pen control for chart recorder)
3. **FUNCTION** Button
(push to set temperature setting)
4. **UP ARROW** Button
5. **DOWN ARROW** Button

Temperature Probe located in Mixer must be covered with a minimum of 3 inches to function properly

SETTING THE TCR-DTC (PRODUCT TEMPERATURE)

1. Turn **MAIN POWER** Switch for CONTROLS to right for ON (see page 3) 
2. Push **UP/DOWN** arrow Button until desired temperate is reached.
3. To **START**, push **FUNCTION** Button and HOLD until CTRL is displayed
4. Push **DOWN ARROW** Button
5. To **STOP**, push **FUNCTION** Button and HOLD until OFF is displayed

GMC/LMC1 WATER METER OPERATION INSTRUCTIONS



WATER METER CONTROL PANEL

1. Fill **INTERRUPT** Switch: Turn to right to stop the filling process. To restart. To resume filling, turn **START** switch to **CONTINUE**.
2. **HOT/COLD WATER** Switch: Used to select water temperature
3. **START** Switch: Turn **START** Switch to left (**RESET**) to start filling from "0". Turn **START** switch to right to **CONTINUE** to resume filling after **INTERRUPT**.
4. Water Meter Control Setting and Display

WATER METER DISPLAY

1. **RST** - RESET Button. Water Meter will reset to "0" (gallons/Liters) when pushed
2. **MD** - ENTER Button. Used to save setting
3. **NEXT** (LEFT ARROW) Button. Used to select Lower DISPLAY
4. **DOWN ARROW** Button
5. **UP ARROW** Button
6. **UPPER DISPLAY** -Actual Water amount metered into kettle
7. **LOWER DISPLAY** - Set Water Amount
8. **OUT** - Illuminates RED when water fill is completed
9. **CNT** - Illuminates GREEN when water is filling
10. **TMR** - Not used
11. **PS** - Illuminates GREEN when water is filling
12. **LOCK** -



SETTING OPERATING WATER METER

1. Make sure **MAIN POWER** switch for controls is ON (see page 3)
2. Select **HOT/COLD** Water (#2 above)
3. To set gallons to be metered, push **NEXT** button until LOWER DISPLAY starts flashing
4. Use **DOWN/UP** Button to select desire gallons (liters) to be metered.
5. Push **MD** - ENTER Button to complete and save the setting.
6. Located Kettle Filler spout and place on Kettle Rim
7. Turn **START SWITCH** to **RESET** to start water meter filling.
8. To stop at anytime during filling, turn **INTERRUPT** Switch to the right
9. Push **RST** - RESET button to reset water meter counter (LOWER DISPLAY) to "0"



