

COOK CHILL HORIZONTAL AGITATOR TILTING MIXER KETTLES

Project _____
 Item _____
 Quantity _____
 FCSI Section 11400 _____
 Approved _____
 Date _____

Models

- HAMKDL60TCC
- HAMKDL100TCC
- HAMKDL200TCC



- 3" diameter air operated flush mounted piston draw-off valve
- Easily removable agitator without the use of tools
- Two piece stainless steel bifold hinged cover with safety screen
- 70 psi steam jacket rating and safety valve
- Type 316 stainless steel for all food contact surfaces
- Water fill faucet with pot filler
- Kettle mounted emergency stop button
- Agitator interlock stops the agitator rotation when the cover is lifted
- Approved for NSF/ANSI Standard 4 - Commercial Cooking
- Built to (ASME) Code - Section VIII - Division 1
- Flow diverter -- no tool installation & removal
- U.L. listed, CSA North American Field Evaluation as specified by AHJ (authority having jurisdiction)
- Manual Speed Control Valve
- Variable Agitator Speed Control
- Agitator Start Stop Button
- Gallon Markings - 10 gallon increments

Short Form Specifications

Shall be CLEVELAND Model HA-MKDL ___ TCC; Cook Chill HORIZONTAL TILTING MIXER KETTLE, ___ gallons; leg mounted; 2/3 jacketed, direct steam; 70 PSI Steam Jacket Pressure Rating; 316 Stainless Steel Liner; electrically driven Horizontal Agitator; Variable Mixer Speed Control; Worm Gear Style Tilt Mechanism with kettle mounted power-pack; 3" diameter air operated, flush mounted Piston Draw-Off Valve; spring loaded Scraper Blades; flush mounted Temperature Probe; Automatic Water Meter; Water Fill Faucet with Pot Filler; Time/Temperature Chart Recorder (located in Control Center); Two Piece Stainless Steel Bifold Hinged Cover with Safety Screen Gallon Markings

Options & Accessories

- **Kettle Mounted Control Option**
 - GMC1/LMC1: Automatic Water Meter (Gallons or Liters – specify)
 - DTCI: Digital Temperature Control and Indicator with automatic steam control
 - TCR-DTCI: Temperature Chart Recorder with Digital Temperature Control and Indicator
 - AWC1: Automatic Water Cooling (for Steam Jacket)
- **Remote Floor Mounted Controls Option**
 - HASECH: Single Floor Mount remote control center, includes DTCI Temperature control & indicator, TCR temperature chart recorder, GMC1 automatic water meter
 - HADECH: Dual twin Floor Mount remote control center, includes DTCI Temperature control & indicator, TCR temperature chart recorder, GMC1 automatic water meter
 - HASELC: Lockable Control Center for Prisons
- Dolly for horizontal agitator
- 3", 90° Elbow
- Food Strainer
- Jacket pressure ratings other than standard
- CRN approval - for Canada
- 208/3/60; 240/3/60 and 460/3/60 electric voltages
- 3" diameter Butterfly Valve
- Flow Diverter

Standard Features

- Full 60, 100 or 200 gallon working capacity
- Electrically driven, Horizontal Agitator Mixer Arm
- Worm gear style kettle tilt mechanism with kettle mounted power-pack
- Variable mixer speed control
- Spring loaded blades scrape entire heated surface area
- Internal mixing fins for most efficient, uniform mixing, heating and cooling
- Flush mounted, easily removable temperature sensor

HA-MKDL-100-TCC

***MINIMUM CLEARANCE FOR KETTLES**

FRONT 36"
SIDE 12"
REAR 12"

LEGEND		
SYM	DESCRIPTION	UTILITY SIZE
	COOLING WATER IN	3/4" NPT
	COOLING WATER OUT	3/4" NPT
	COLD WATER	3/4" NPT
	HOT WATER	3/4" NPT
	STEAM IN	1 1/4" NPT
	CONDENSATE RETURN	3/4" NPT
	ELECTRICAL	SEE SPEC.
	AIR	1/2"
	AUTOMATIC DRAIN	3/8" NPT

ELECTRICAL POWER TO AND FROM CONTROL PANEL

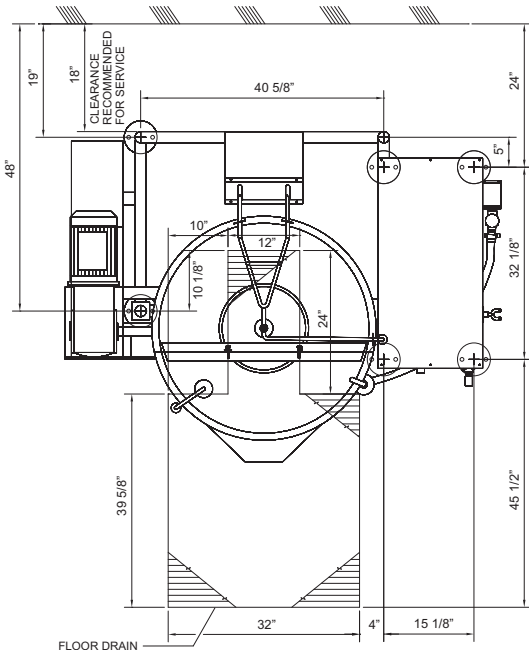
- CONTRACTOR MUST CUT ENTRY HOLE
- TOP OR BOTTOM POWER ENTRY RECOMMENDED
- MUST USE PROPER CONNECTIONS TO MAINTAIN U.L. LISTING

NOTES:

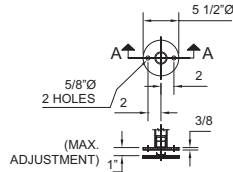
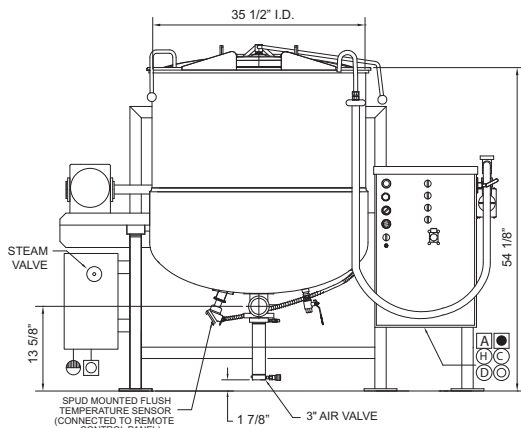
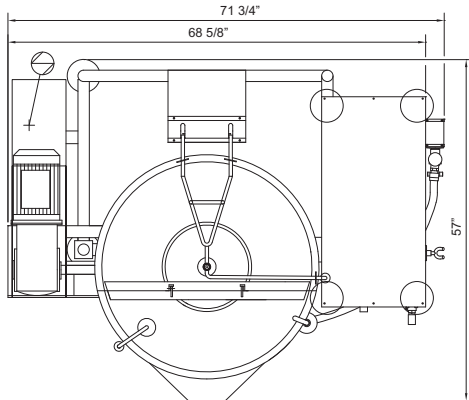
- 1.) IT IS IMPERATIVE THAT THE KETTLE IS LEVELED BEFORE BOLTING TO THE FLOOR
- 2.) MOST FLOORS HAVE A PITCH FOR DRAINING. IF THERE IS ANY VOID BETWEEN THE FLANGE AND THE FLOOR, SHIMS MUST BE USED TO FILL THE SPACE
- 4.) AFTER THE KETTLE IS LEVELED, ANCHOR ALL FOOT FLANGES TO THE FLOOR BY USING S.S. OR NON-RUSTING ANCHOR BOLTS
- 5.) ALL VERTICAL DIMENSIONS SHOWN ARE MINIMUM. FEET ARE ADJUSTABLE TO 1 INCH MAXIMUM.

ELECTRICAL & SHIPPING INFO

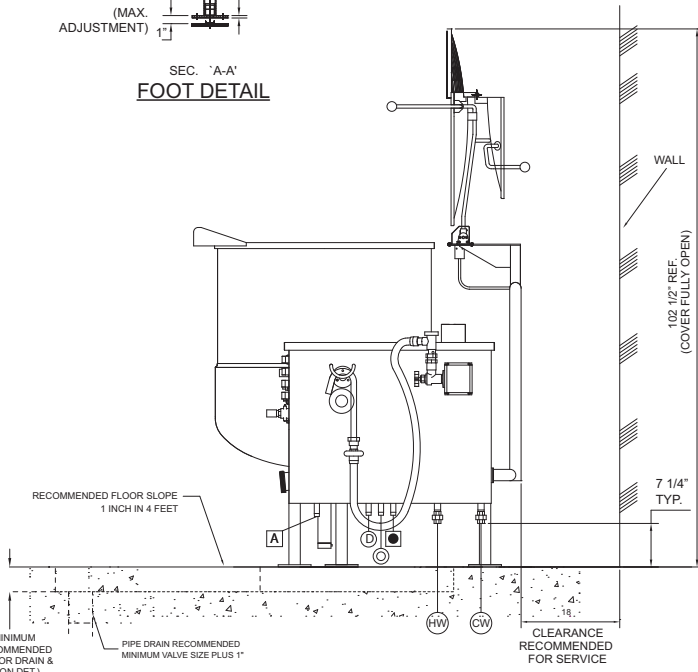
MODEL	Electrical	R.P.M.	Shipping Weight	Crate Size W x L x H
	208-240V 3PH/60Hz	220-240V (Approx.)	(Approx.)	
HAMKDL100TCC	15 AMPS	14 AMPS	3-19, 2,150 lbs	77" x 66" x 72"



FLOOR DRAIN & FEET LOCATION DET.



SEC. 'A-A'
FOOT DETAIL



NOTES: The pressure drop is 12 to 18 PSI for steam and chilled water passing through the kettle.
Air must be dry, clean and free of oil.

Cleveland Range reserves right of design improvement or modification, as warranted.

(NOT TO SCALE)

HA-MKDL-200-TCC

***MINIMUM CLEARANCE FOR KETTLES**

FRONT 36"
SIDE 12"
REAR 12"

LEGEND		
SYM	DESCRIPTION	UTILITY SIZE
	COOLING WATER IN	1 1/4" NPT
	COOLING WATER OUT	1 1/4" NPT
	COLD WATER	3/4" NPT
	HOT WATER	3/4" NPT
	STEAM IN	1 1/4" NPT
	CONDENSATE RETURN	3/4" NPT
	ELECTRICAL	SEE SPEC.
	AIR	1/2" (90-100 PSI)
	AUTOMATIC DRAIN	3/8" NPT

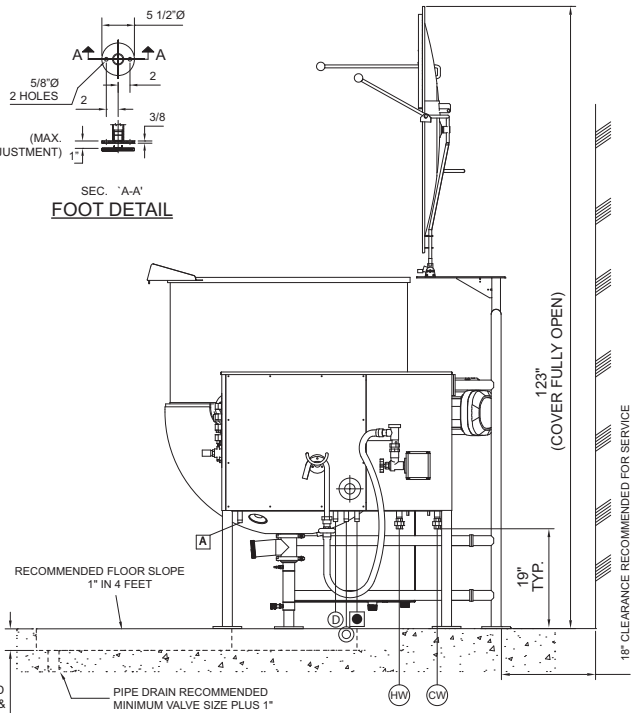
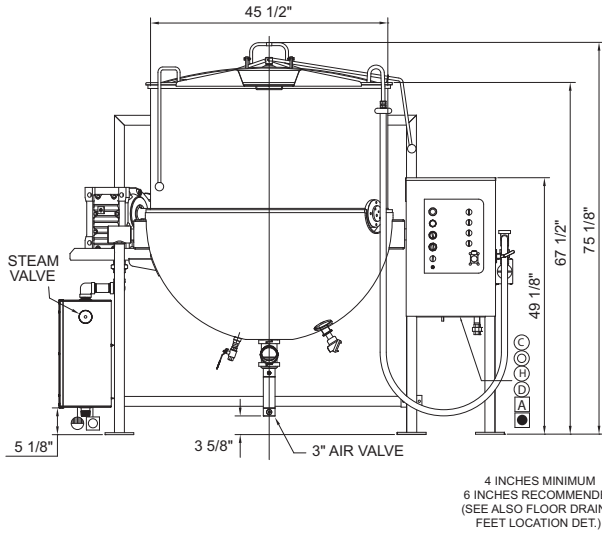
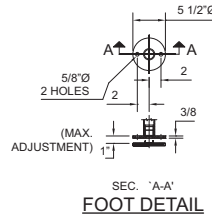
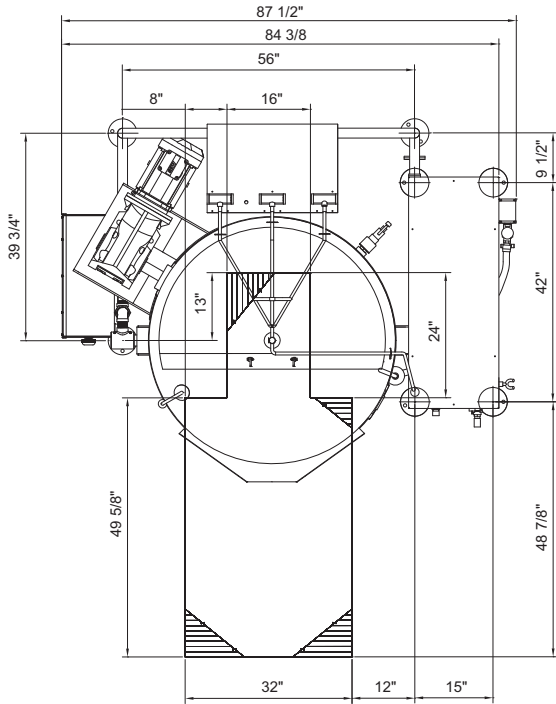
- ELECTRICAL POWER TO AND FROM CONTROL PANEL
- CONTRACTOR MUST CUT ENTRY HOLE
 - TOP OR BOTTOM POWER ENTRY RECOMMENDED
 - MUST USE PROPER CONNECTIONS TO MAINTAIN U.L. LISTING

NOTES:

- IT IS IMPERATIVE THAT THE KETTLE IS LEVELED BEFORE BOLTING TO THE FLOOR
- MOST FLOORS HAVE A PITCH FOR DRAINING, IF THERE IS ANY VOID BETWEEN THE FLANGE AND THE FLOOR, SHIMS MUST BE USED TO FILL THE SPACE
- AFTER THE KETTLE IS LEVELED, ANCHOR ALL FOOT FLANGES TO THE FLOOR BY USING S.S. OR NON-RUSTING ANCHOR BOLTS
- ALL VERTICAL DIMENSIONS SHOWN ARE MINIMUM. FEET ARE ADJUSTABLE TO 1 INCH MAXIMUM.

ELECTRICAL & SHIPPING INFO

MODEL	Electrical	R.P.M.	Shipping Weight	Crate Size W x L x H
	208-240V 3PH/60Hz	220-240V (Approx.) 3PH/60Hz	(Approx.) 2,500 lbs	
HAMKDL200TCC	22 AMPS	20 AMPS	3-19	60" x 79" x 88"



4 INCHES MINIMUM
6 INCHES RECOMMENDED
(SEE ALSO FLOOR DRAIN & FEET LOCATION DET.)

NOTES: The pressure drop is 12 to 18 PSI for steam and chilled water passing through the kettle.
Air must be dry, clean and free of oil.

Cleveland Range reserves right of design improvement or modification, as warranted.

(NOT TO SCALE)