

LET.	REVISIONS	DATE	BY
A	SERVICE RELEASE PER E.O. #C-6861	04-15-04	VDS
B	PICTORIAL REVISION, ADDED ADDITIONAL DETAIL.	11-07-07	TJW
-	PER ECR-07-281	-	-

STEP 1

NOTE: ITEMS 7
INSTALL AND TIGHTEN 1/4-20 NUTS ON REAR WALL

STEP 2

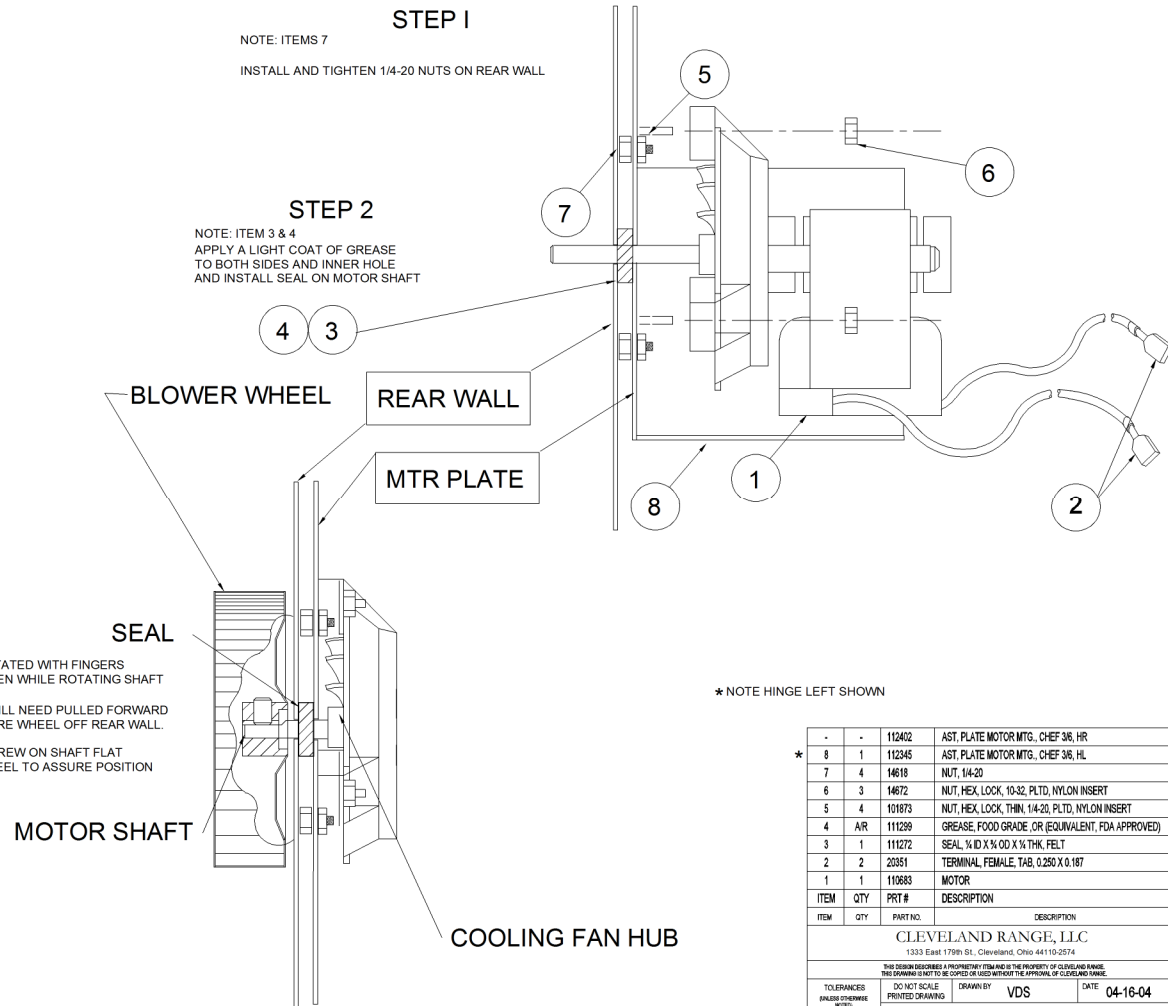
NOTE: ITEM 3 & 4
APPLY A LIGHT COAT OF GREASE TO BOTH SIDES AND INNER HOLE AND INSTALL SEAL ON MOTOR SHAFT

STEP 3

MOTOR SHAFT SHOULD BE ABLE TO BE ROTATED WITH FINGERS ONLY A SLIGHT DRAG SHOULD BE FELT WHEN WHILE ROTATING SHAFT

THEN INSTALL WHEEL TO SHAFT, WHEEL WILL NEED PULLED FORWARD FROM REAR WALL TO MOVE FREELY, ASSURE WHEEL OFF REAR WALL.

ASSURE WHEEL HUB POSITION HAS SET SCREW ON SHAFT FLAT TIGHTEN SET SCREW FIRMLY AND SPIN WHEEL TO ASSURE POSITION



* NOTE HINGE LEFT SHOWN

-	-	112402	AST. PLATE MOTOR MTS. CHEF 3/6, HR	
*	8	112345	AST. PLATE MOTOR MTS. CHEF 3/6, HL	
	7	14618	NUT, 1/4-20	
	6	14672	NUT, HEX, LOCK, 10-32, PLTD, NYLON INSERT	
	5	101873	NUT, HEX, LOCK, THIN, 1/4-20, PLTD, NYLON INSERT	
	4	A/R	GREASE, FOOD GRADE OR (EQUIVALENT, FDA APPROVED)	
	3	1	SEAL, 1/4 ID X 1/4 OD X 1/4 THK, FELT	
	2	2	TERMINAL, FEMALE, TAB, 0.250 X 0.187	
	1	1	110683	MOTOR
ITEM	QTY	PRT #	DESCRIPTION	
ITEM	QTY	PART NO.	DESCRIPTION	

CLEVELAND RANGE, LLC
1333 East 179th St., Cleveland, Ohio 44110-2574

THIS DESIGN DESCRIBES A PROPRIETARY ITEM AND IS THE PROPERTY OF CLEVELAND RANGE. THIS DRAWING IS NOT TO BE COPIED OR USED WITHOUT THE PERMISSION OF CLEVELAND RANGE.

TOLERANCES UNLESS OTHERWISE NOTED	DO NOT SCALE PRINTED DRAWING	DRAWN BY	DATE
DECIMAL N/A		VDS	04-16-04
ANGULAR ±1°	SIZE C	DRAWING NO. 260AXQ SHEET 1 OF 1 REV B	