

Project _____
 Item _____
 Quantity _____
 FCSI Section 11400 _____
 Approved _____
 Date _____

ELECTRIC CHAIN HOIST

Models

- CHE1005M
- CHH101M
- CHR102M



Standard Features

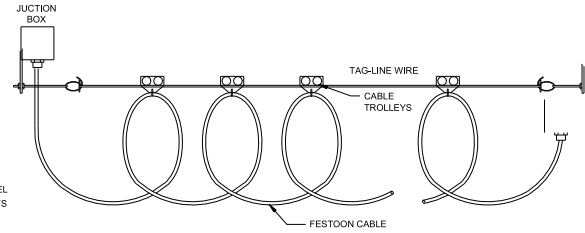
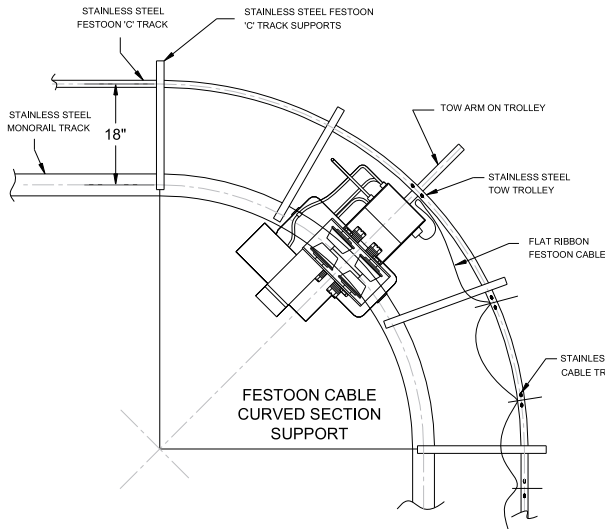
- 1/2, 1, & 2 ton capacity Chain Hoist
- 8 feet per minute Hoist lifting speed
- Motor driven, low head room trolley with four special crown tread wheels
- Heavy-duty Hoist motor with multiple disc brake
- Overload Protection automatically stops the lift when overload is being sensed
- Lifetime lubricated gears which require no oil in the transmission
- Impact resistant Control Station with snap action contacts for positive control
- Internal cable strain relief for Control Station
- Complete with lifting Chain, bottom Hook, Safety Lock and Chain Container
- Stainless steel Rail with End-Stops
- Accepted for use in U.S.D.A. Inspected Facilities

Short Form Specifications

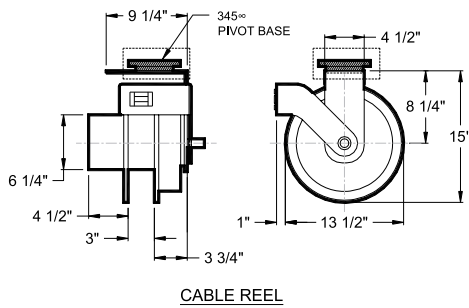
Shall be CLEVELAND Model CH _____, Electric CHAIN HOIST and MONORAIL SYSTEM. ____ ton capacity, motor driven Trolley with special crown tread wheels, 8 feet per minute lifting speed, overload protection, disk brakes, lifetime lubricated gears, impact resistant Control Station, lifting Chain with safety-lock hook and chain container.

Options & Accessories

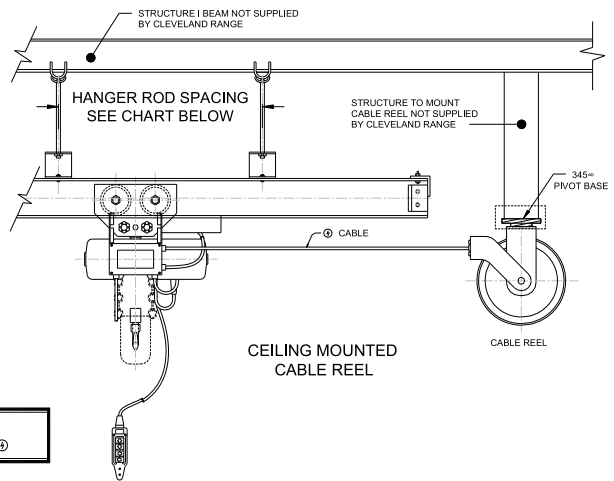
- Hanger Rods (specify length)
- Rail Hanger Brackets
- Universal Beam Clamps
- Remote Control System
- Curved sections
- Rail Coupling to support Rail at joint
- Automatic Cord Reel
- Festooned stainless steel cable for power cord
- Stainless steel chain (1/2 and 1 ton only)
- Stainless steel bottom hook
- Stainless steel chain container
- Stainless steel chain hook (1/2 and 1 ton only)



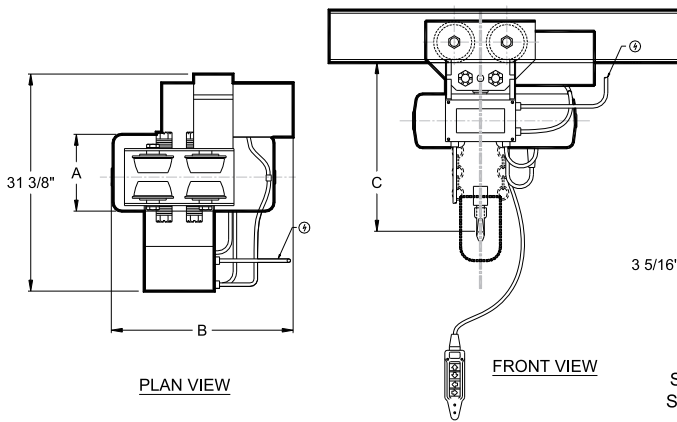
STRAIGHT LINE FESTOON CABLE SUPPORT



CABLE REEL

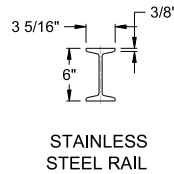


CEILING MOUNTED CABLE REEL



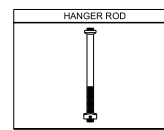
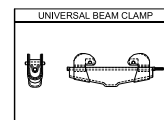
PLAN VIEW

FRONT VIEW

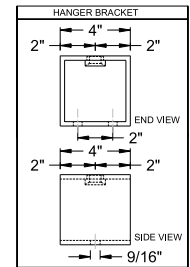


STAINLESS STEEL RAIL

CLAMP AND HANGER ROD



HANGER BRACKET FOR STAINLESS STEEL RAIL



MOTORIZED HOIST

MODEL	DIMENSIONS			CAPACITY TONS	ELECTRIC 208V-3PH AMPS	ROD SPACING STAINLESS STEEL RAIL
	A	B	C			
CHE1005M	8 3/4"	18 3/4"	18 1/8"	1/2	4.9	10'-0"
CHH101M	8 3/4"	18 3/4"	18 1/2"	1	6.1	10'-0"
CHR102M	12 11/16"	20 13/16"	21 15/16"	2	9.3	5'-0"

Cleveland Range reserves right of design improvement or modification, as warranted.

(NOT TO SCALE)