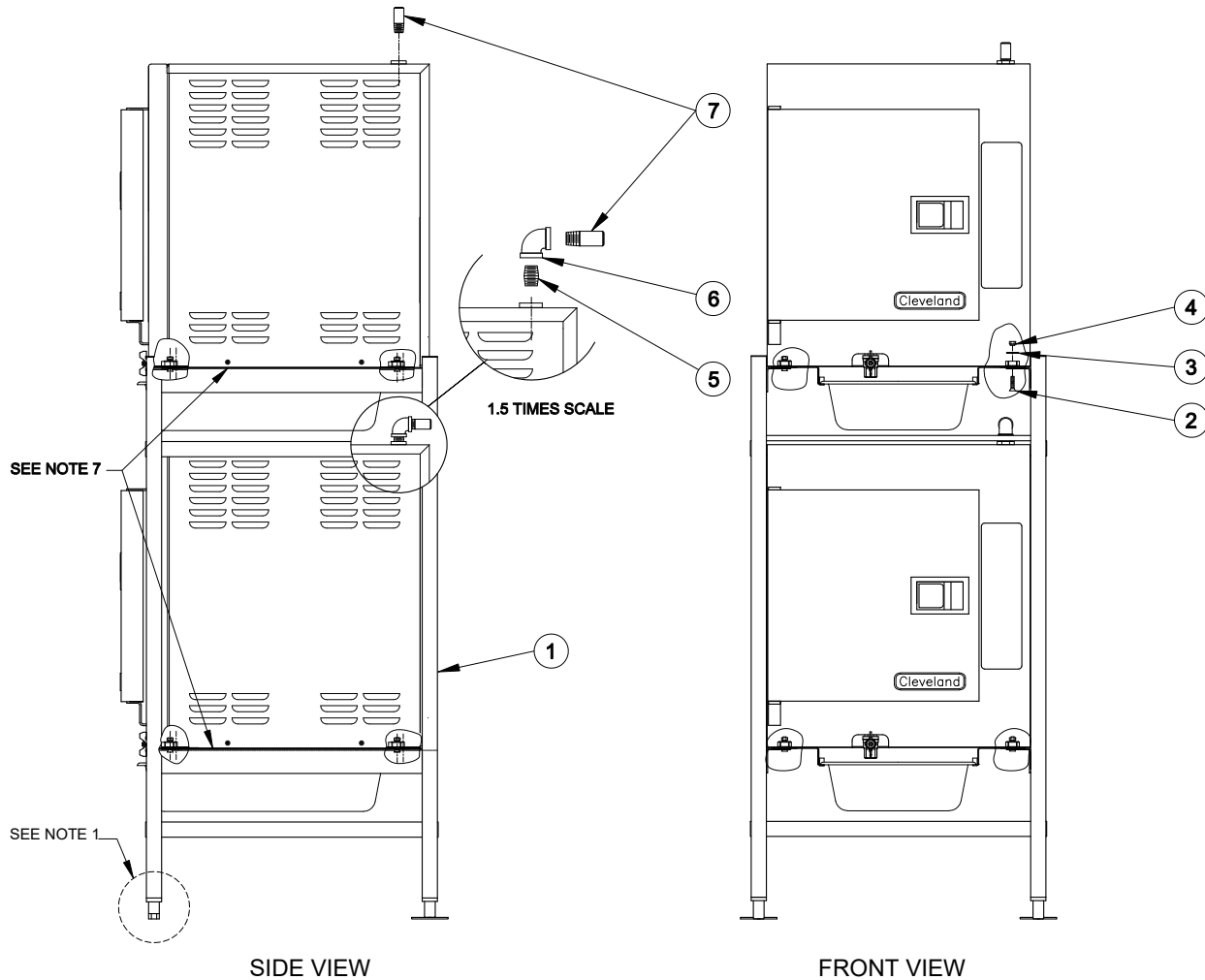


**NOTES**

1. NOTE BULLET FEET GO TO THE FRONT.
2. SET THE STEAMERS ON TO THE STAND, CENTERING THE LEG MOUNTING NUTS OVER THE FRONT SET OF OPENINGS IN THE LOWER STAND RAILS.
3. ATTACH THE STEAMERS TO THE STAND USING THE 8 SETS OF SCREWS, NUTS AND WASHERS PROVIDED (ITEMS 2, 3 AND 4).
4. INSTALL THE STEAM VENTS (ITEMS 5, 6 AND 7) ONTO THE UNITS AS SHOWN . BE SURE TO USE A NON-HARDENING THREAD SEALANT ON ALL THREADED JOINTS.
5. SEE INSTALLATION INSTRUCTIONS P/N 1SCE-OPM FOR ADDITIONAL DETAILS OF STEAMCUB INSTALLATION.
6. SUPPLIED WITH STEAMER, NOT PART OF THE KIT.
7. SEAL ANY GAPS BETWEEN THE STEAMERS AND THE STAND WITH A SUITABLE RTV SEALANT (NOT PROVIDED)

LET.	REVISIONS	DATE	BY
A	PRODUCTION RELEASE PER EO#C-6481R1	10-10-03	CFS
-	(REF ECR# 02-092)	-	-
B	ADD NOTE 1; RENUMBERED NOTES PER PC170246	06-22-17	IG



SEE NOTE 6

ITEM	QTY	PART NO.	DESCRIPTION
7	2	143261	NIPPLE, 1/2" NPT X 2.0", BRASS, TOE
6	1	05250	ELBOW, 90 DEG., 1/2" NPT, BRASS
5	1	14324	NIPPLE, 1/2" NPT X CLOSE, BRASS
4	8	14665	NUT, HEX 1/4-20 LOCK, SST (NYLON INSERT)
3	8	108177	WASHER, FLAT, 1/4"ID X 1"OD, 0.050 THCK SST
2	8	108175	SCREW, 1/4-20, X 1.250, CS, SST
1	1	1095981	EQUIPMENT STAND, ASSEMBLY, CUB STACKED, ES2469

<b>CLEVELAND RANGE, LLC</b> 1333 East 179th St., Cleveland, Ohio 44110-2574			
<small>THIS DESIGN DESCRIBES A PROPRIETARY ITEM AND IS THE PROPERTY OF CLEVELAND RANGE. THE DRAWING IS NOT TO BE COPIED OR USED WITHOUT THE APPROVAL OF CLEVELAND RANGE.</small>			
TOLERANCES (UNLESS OTHERWISE NOTED)	DO NOT SCALE PRINTED DRAWINGS	DRAWN BY <b>CFS</b>	DATE <b>6-26-03</b>
DECIMAL <b>±.030</b>	TITLE <b>ASSY INSTRUCTION, STACKED STEAMCUB STAND, P/N ES2469</b>		
ANGULAR <b>±1°</b>	SIZE <b>C</b>	DRAWING NO. <b>260AWX</b>	SHEET 1 OF 1 REV <b>B</b>