



COMPRESSED AIR SYSTEMS & REFRIGERATED AIR DRYERS

ITEM NUMBER _____

JOB NAME / NUMBER _____



COMPRESSED AIR SYSTEMS

Cleveland Standard Features

- Air Compressor mounted on A.S.M.E. rated Receiver Tank
- Baldor high efficiency Motor
- Magnetic Starter with Thermal Overloads, completely wired and mounted
- Balanced Pump, external and internal
- Cast Iron Cylinders
- Forged Crankshaft and Pistons
- High quality cast iron Piston Rings
- Cast aluminum Finned Inner Coolers
- Inner Cooler Safety Valve
- Manual Drain for Air Receiver Tank
- Automatic Start and Stop Control
- 14 gauge Belt Guard
- 1/2" Combination Filter/Pressure Regulator/Guage
- 80 gallon Receiver Tank for CAS-5 & CAS-7.5
- 120 gallon Receiver Tank for CAS-10

Options & Accessories

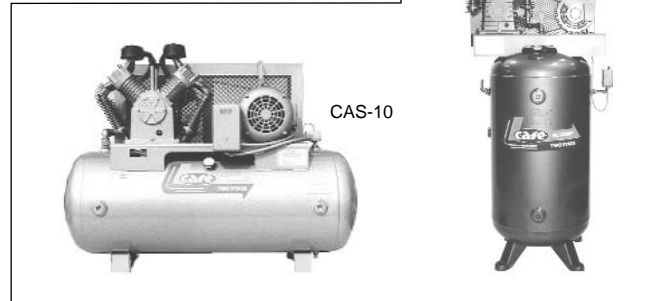
- Vibration Isolation Pads (set of four)
- 3/4" Diameter Stainless Steel Flex Hose
- Refrigerated Air Dryer with 37°F Dew Point
- Programmable, Automatic Drain Valve for Receiver Tank

REFRIGERATED AIR DRYERS

Cleveland Standard Features

- Non-Cycling Dryer with double pass flooded Evaporator
- Rated at 37°F (+20°F) Pressure Dew Point
- High efficiency Shell and Tube designed Heat Exchangers for Compact Unit size and weight
- Low and High Refrigerant protection with Automatic Shut-Down Device
- Internal Thermal Overload Protection
- Float operated Drain Valve
- Power "on/off" Switch with Control Light
- Low ambient Fan Control
- Air cooled, compact design, cabinet type
- Electrical Supply Cord
- Designed for wallmounting

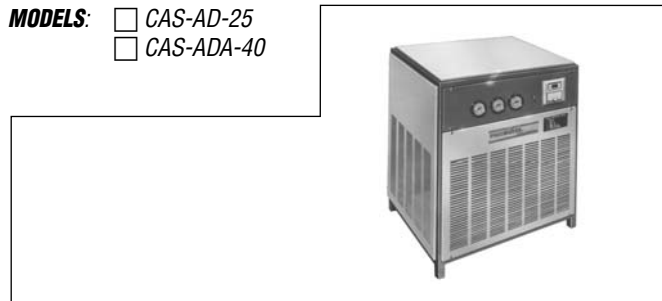
- MODELS:** CAS-5 (VERTICAL)
 CAS-7.5 (VERTICAL)
 CAS-10 (HORIZONTAL)



Short Form Specifications

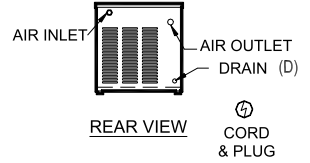
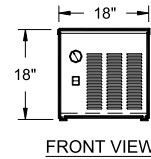
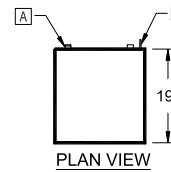
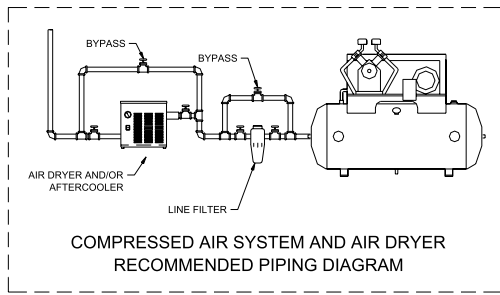
Shall be CLEVELAND Model CAS-____, COMPRESSED AIR SYSTEM, consisting of Air Compressor & Receiver Tank, ___ H.P. (horse power); High efficiency Baldor Motor with magnetic Starter, Automatic Start and Stop Control; balanced External and Internal Pump; 14 gauge Steel; Belt Guard; 1/2" combination Filter / Pressure Regulator; ___ gallon Receiver Tank.

- MODELS:** CAS-AD-25
 CAS-ADA-40

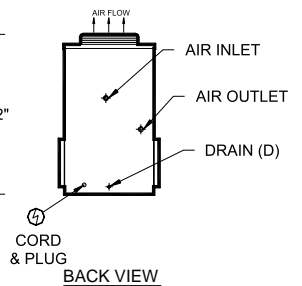
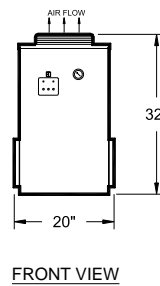
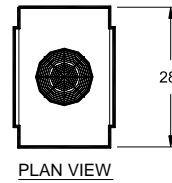


Short Form Specifications

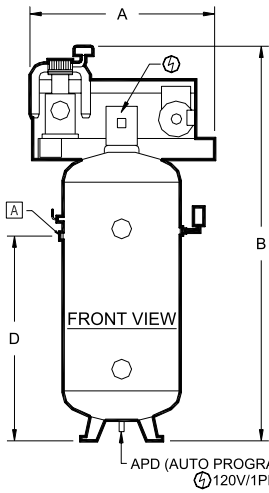
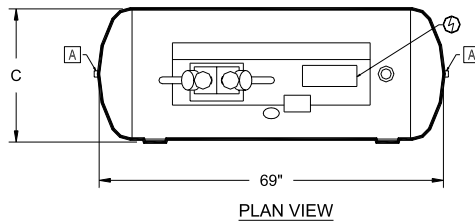
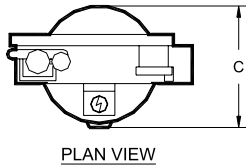
Shall be CLEVELAND Model CAS-AD____, REFRIGERATED AIR DRYER for Series "CAS" Compressed Air Systems. Rated at 37°F (+20°F) Pressure Dew Point; Air cooled cabinet type; compact design with Shell and Tube Heat Exchanger; Automatic High and Low Pressure Shut-Down device; Thermal Overload Protection; Non-Cycling Dryer with double pass flooded Evaporator; low ambient Fan Control; Float operated Drain Valve.



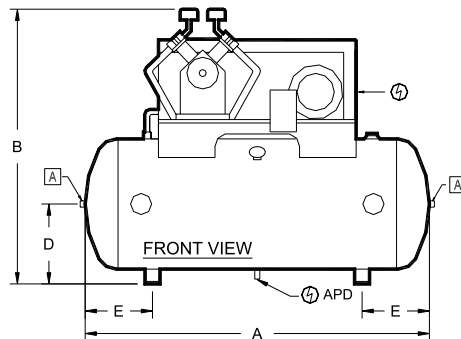
AD-25
(for CAS-5)



ADA-40
(for CAS-7.5 & CAS-10)



CAS-5 & CAS-7.5



CAS-10

DIMENSIONS

AIR COMPRESSOR

MODELS	A	B	C	D	E	CAPACITY AT 100 PSIG	AIR OUTLET	DRAIN	208/3PH ELECTRICAL
							A	D	⚡
CAS-5	37"	74"	26"	40 1/2"	-	19 CFM	2" NPT	1" NPT	15 AMPS
CAS-7.5	37"	79"	26"	40 1/2"	-	26 CFM	2" NPT	1" NPT	22 AMPS
CAS-10	69"	55"	30"	16"	13 1/2"	40 CFM	2" NPT	1" NPT	28.5 AMPS

DIMENSIONS

REFRIGERATED AIR DRYER

MODELS	AIR	DRAIN	120/1PH ELECTRICAL CORD & PLUG
	A	D	⚡
AD-25 (for CAS-5)	2"	1/4"	1/4 HP - 10 AMPS
ADA-40 (for CAS-7.5 & CAS-10)	1/2"	1/4"	1/4 HP - 7.5 AMPS

AIR SUPPLY COMPRESSED AIR SYSTEMS

7459 9 MILE ROAD
ROCKFORD, MI 49341

Telephone: 616-874-7751

INSTALLATION AND SERVICE
MANUAL

CONGRATULATIONS

And welcome to the ranks of many satisfied users of C.A.S.E. air compressors. The people at C.A.S.E. wish to thank you for making us your choice for air compressing equipment.

The service life of your compressor will largely depend upon its location and the manner in which it is installed and serviced. If all recommendations contained in this booklet are followed, the compressor will provide the longest possible service life.

WARNING

STATEMENT CONCERNING THE USE OF THIS EQUIPMENT FOR BREATHING AIR AND/OR AQUA LUNG SERVICE

IF THE MODEL NUMBER OF THIS AIR COMPRESSOR CONTAINS THE LETTERS "BAP", THE COMPRESSOR IS SUITABLE FOR USE IN BREATHING AIR SERVICES. IN THE ABSENCE OF SUCH A DESIGNATION, THE COMPRESSOR IS NOT CONSIDERED CAPABLE OF PRODUCING AIR OF BREATHING QUALITY. FOR A COMPRESSOR TO BE CAPABLE OF USE IN BREATHING AIR SERVICES, IT MUST BE FITTED WITH ADDITIONAL SPECIALIZED EQUIPMENT TO PROPERLY FILTER AND/OR PURIFY THE AIR TO MEET ALL APPLICABLE FEDERAL, STATE, AND LOCAL LAWS, RULES, REGULATIONS, AND CODES, SUCH AS, BUT NOT LIMITED TO, OSHA 29 CFR 1910.134, COMPRESSED GAS ASSOCIATION COMMODITY SPECIFICATION G-7-1966, GRADE D BREATHING AIR, AND/OR CANADIAN STANDARDS ASSOCIATION. SHOULD THE PURCHASER AND/OR USER FAIL TO ADD SUCH SPECIALIZED EQUIPMENT AND PROCEEDS TO USE THE COMPRESSOR FOR BREATHING AIR SERVICE, THE PURCHASER/USER ASSUMES ALL LIABILITY RESULTING THEREFORE WITHOUT ANY RESPONSIBILITY OR LIABILITY BEING ASSUMED BY THE MANUFACTURER.

Step 1 - UNLOADING

Unload the compressor from the delivering vehicle - the purchaser must arrange for adequate lifting equipment at the job site.

IMPORTANT NOTE: The purchaser assumes title to the compressor equipment at the manufacturer's shipping dock. Immediately upon receipt of the equipment, it should be inspected for any damage that may have occurred during shipment. If damage is present, demand an inspection immediately by an inspector from the carrier. Ask him how to file a claim for damages.

Step 2 - IMPORTANT

Read the instruction manual which accompanies the compressor for detailed installation and operating instructions. Do not attempt to start the compressor until Step 2 has been completed.

Step 3 - LOCATION

Locate compressor in a clean, cool, well-ventilated area, preferably in a separate room. If a separate location is not available, some measures should be taken to allow outside air to be drawn in by the compressor intake. This is usually accomplished by piping the intake filter outside of the building and switching the cartridge for a weatherproof filter cartridge. Leave at least 16" of space between any wall and the compressor for ventilation and ease of maintenance.

Step 4 - MOUNTING

We recommend the use of rubber pads or isolators between the tank legs and the floor. If a shim is required to level the unit, place it between the pad and the floor. If you bolt the unit to the floor, use the bolts as guide pins and do not tighten bolts. The rubber pads are used to absorb machine vibration and cannot work effectively if bolted tightly.

Step 5 - LUBRICATION

Check oil sight gauge. If oil level is mid-way along the gauge, there is no need for additional lubricant.

Step 6 - PIPING

The compressed air distribution system should be of sufficient pipe size to keep the pressure minimum. All piping should be sloped to an accessible drain point.

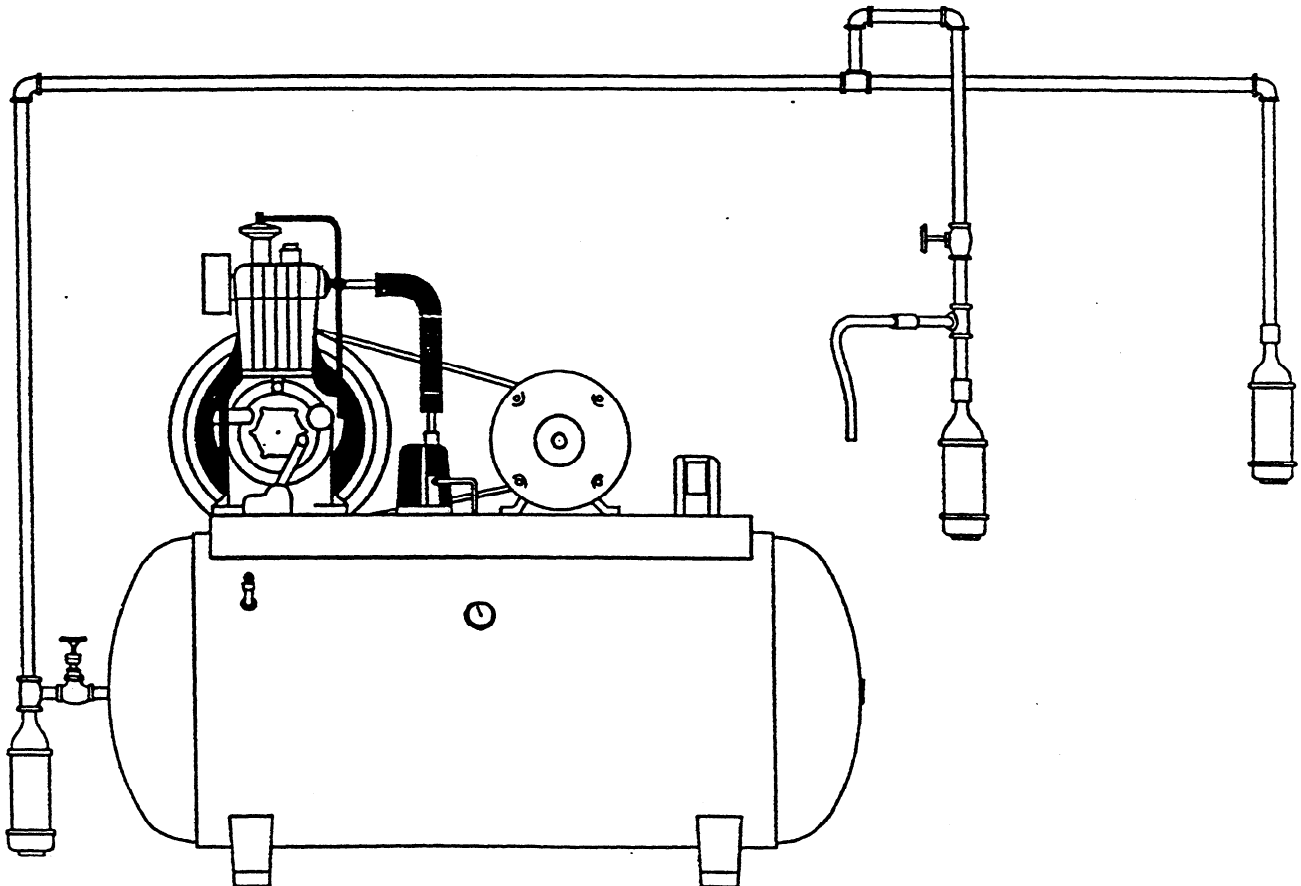
We recommend a complete "loop" in the main line. The main air line should not be smaller than the compressor outlet size. For long lines, use of the pipe sizing chart is recommended.

Outlets should be taken from the top of the main line so that moisture will not enter the outlet.

pipe sizes for compressed air lines:

Air c.f.m.	Lenth of Pipe Lines in Feet								
	25	50	75	100	150	200	250	300	
1	1/2	1/2	1/2	1/2	1/2	1/2	1/2	1/2	
2	1/2	1/2	1/2	1/2	1/2	1/2	1/2	1/2	
3	1/2	1/2	1/2	1/2	1/2	1/2	1/2	1/2	
5	1/2	1/2	1/2	1/2	1/2	1/2	1/2	1/2	
10	1/2	1/2	1/2	3/4	3/4	3/4	3/4	3/4	
15	1/2	3/4	3/4	3/4	3/4	3/4	3/4	3/4	
20	3/4	3/4	3/4	3/4	3/4	3/4	3/4	3/4	
25	3/4	3/4	3/4	3/4	3/4	1	1	1	
30	3/4	3/4	3/4	3/4	1	1	1	1	
35	3/4	3/4	1	1	1	1	1	1	
40	3/4	1	1	1	1	1	1	1	
50	1	1	1	1	1	1	1	1	
60	1	1	1	1	1 1/4	1 1/4	1 1/4	1 1/4	
70	1	1	1	1	1 1/4	1 1/4	1 1/4	1 1/4	
80	1 1/4	1 1/4	1 1/4	1 1/4	1 1/2	1 1/2	1 1/2	1 1/2	
100	1 1/4	1 1/4	1 1/4	1 1/4	1 1/2	1 1/2	1 1/2	1 1/2	

Check all piping and fittings regularly to avoid "leaks" in the system.

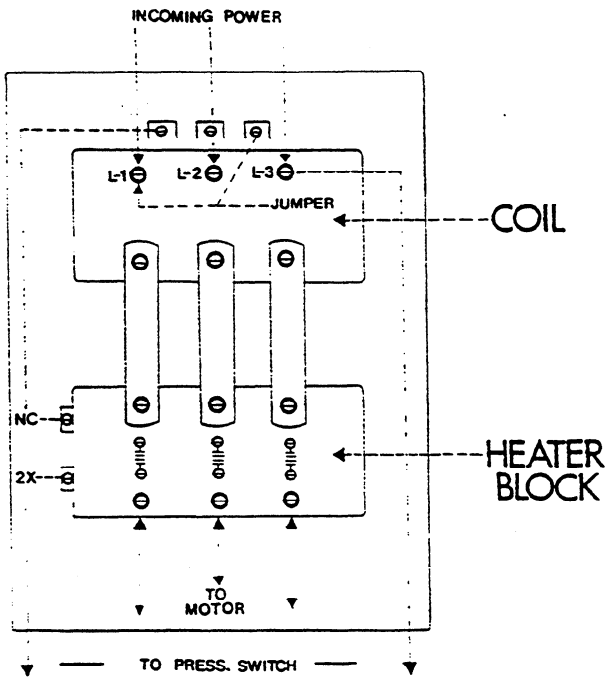


WIRING DATA

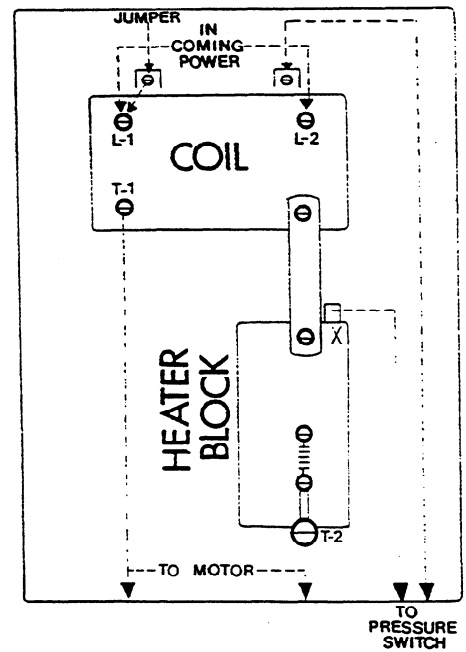
Step 7 - ELECTRICAL WIRING

- A. COMPRESSOR EQUIPPED WITH OPTIONAL FACTORY MOUNTED AND WIRED MOTOR STARTER - Wire motor starter to wall mounted fusable disconnect switch (disconnect switch not furnished by the manufacturer).
- B. STANDARD COMPRESSOR - Wall mount a fusable disconnect switch and magnetic motor starter. Connect the motor power leads to the motor starter. Connect the pressure switch in series with the motor starter control circuit. Connect the motor starter to the fusable disconnect switch.
- C. ALL INSTALLATIONS - Install extra conductor with green insulation from the motor to the starter to the disconnect switch to ground. Wire size to be at least equal to the motor power leads. The motor, starter, pressure switch, and disconnect switch should be grounded with this wire.

FURNAS THREE-PHASE MAG STARTER



GOULD SINGLE-PHASE MAG STARTER



WIRE SIZE CHART

Motor HP	Max Length of Line (Ft)	Single Phase			Three Phase		
		115	208	230	208	220	440
5	100	2	6	6	12	12	14
7½	150	00	2	2	6	6	12
10	150	0000	2	2	6	6	12
15	150	---	--	--	4	4	10
20	150	--	--	--	3	3	8
25	150	--	--	--	2	2	6

WARNING

Make sure your compressor is wired by a certified electrician and that it meets all local and state wiring codes.

FUSES

The momentary starting current of an electric motor is three times greater than its full load current. Consult your electric for proper sizing.

Step 8 - PRE-STARTUP CHECKS

Check compressor rotation by flicking the start-stop control on the pressure switch or the fusible disconnect switch on wall. Correct rotation will cause air from the fan blades within the flywheel to blow across the compressor pump. If rotation is incorrect, interchange two connections at the magnetic starter with the disconnect switch in the off position.

Step 9 - OPERATION CHECKS & DUAL CONTROL OPERATION

Close the service valve and start compressor. Allow the tank to build up to design pressure for the machine. At this pressure, if the unit is equipped with standard automatic start and stop control, the pressure switch should cause the unit to stop! If the compressor is equipped with constant speed control (commonly called dual control) and the selector valve is in the on position, it should unload (run without compressing air). If the compressor does not operate properly, shut down immediately and contact your dealer.

Step 10 - START - STOP PRESSURES

Open service valve and/or drain valve to let pressure in tank drop until machine starts: Note starting pressure and allow compressor to run until it stops or unloads and then note stopping pressure. Normal load to unload range is 30 to 40 pounds. If pressure is incorrect, consult your dealer for assistance.

Step 11 - RUNNING CHECK

Pull ring on all safety valves to be sure they relieve and reseal. Do this several times. The compressor has been run at the factory and break-in is not required. Run for about ten minutes by bleeding air from lines to let unit warm up. Observe for excess vibration or any unusual noise and verify oil level under operating conditions.

Step 12 - WATER DRAINAGE

Provide a floor drain in a nearby location for condensate drainage. A floor drain is desirable whether the compressor is equipped with an automatic condensate trap or any water removable device. All compressors will have water condensed in the receiver tank.

AIR COOLED COMPRESSOR SCHEDULED SERVICE INTERVAL

MAINTENANCE OPERATION	SERVICE INTERVAL				
	Operating Hours/Months - whichever comes first				
	500/3	1000/6	1500/9	2000/12	2500/15
COMPRESSOR					
Air Inlet Filter - Inspect and Clean	Weekly				
Frame Oil Level - Check	Daily				
Inspect Oil for Contamination -Change if necessary	Monthly				
Petroleum Lube	X	X	X	X	X
Frame Oil - Change Keystone or Anderol® 500 EVERY 1500 HOURS OR 12 MONTHS WHICHEVER IS FIRST					
Compressor Valves - Inspect and Clean	X	X	X	X	X
Intercooler - Clean Exterior	Weekly				
Low Oil Level Switch - Check Operation	X	X	X	X	X
Operate Safety Valves - Manually	Weekly				
Clean Cylinder Cooling Fins	Weekly				
V-BELT DRIVE					
Belt Tension - Check	Monthly				
MOTOR					
Motor Bearings - Check and Lubricate Clean					X
	Monthly - (Weekly in Dusty Locations)				
AFTERCOOLER					
Aircooled: Clean externally	Monthly - (Weekly in Dusty Locations)				
Clean air flow internally	X				
Watercooled: Check discharge water temp.-120°F max	X		X		
Check water flow rate	Weekly				
RECEIVER					
Drain Condensate - Manual	Daily				
Operate Safety Valves	Monthly				
GENERAL					
Tighten or check all bolts	Monthly				
Check for Unusual Noise and Vibration	Daily				
Inspect for Air Leaks	Monthly				

Note 1: After the initial change, time between changes may be extended, *if* the condition of *both* the compressor and lubricant so indicate. Periods between changes should be increased by no more than 500 Hours over the preceding interval. The maximum period recommended for a compressor receiving adequate maintenance and located in a clean, cool, location is 4000 hours or 12 months.

SECTION 6
TROUBLE CHART

TROUBLE	CHECK POINT NOS.
Oil pumping	1-7-9-11-17-23-24
Knocks or rattles	3-18-19-20-21-22-23-24
Air delivery has dropped off	1-3-6-17-19-20-23-24
Intercooler safety valve pops	19-26
Trips motor overload or draws excessive current	8-13-14-15-16-17-19-20-22-24
Water in frame or rusting in cylinders	11-12
Compressor won't unload	20
Auxiliary valve chatters, leaks around stem	20
Excessive starting and stopping (auto start)	2-4-6-13
Compressor doesn't unload when stopped	17-20-27
Compressor runs excessively hot	2-5-10-19
Compressor won't come up to speed	14-17
Lights flicker when compressor runs	14-15
Water hammer (on units equipped with water-cooled aftercoolers) ...	25

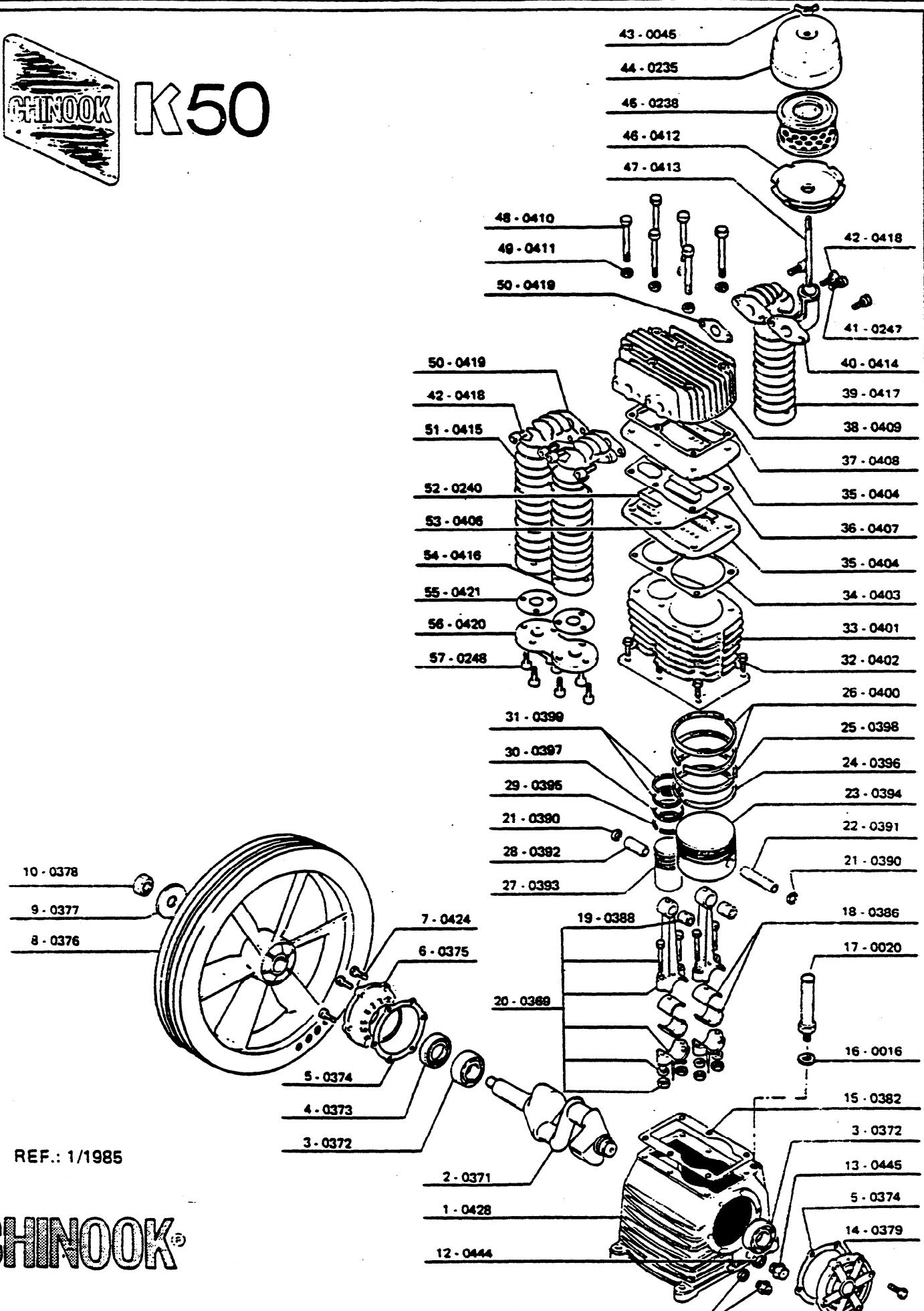
Check Point Nos.

Trouble Cause

1. Clogged intake air cleaner.
2. High pressure discharge valve leaking.
3. Loose belt wheel or motor pulley or motor with excessive end play in shaft.
4. Air receiver needs draining.
5. Air to belt wheel fan blocked off.
6. Air leaks in piping. (on machine or in outside system)
7. Oil viscosity too low.
8. Oil viscosity too high.
9. Oil level too high.
10. Oil level too low.
11. Detergent type oil being used. Change to non-detergent type with rust and oxidation inhibitor.
12. Extremely light duty or located in a damp humid spot.
13. Should have constant speed control due to steady air demand.
14. Check line voltage, motor terminals for good contact, tight starter connections, proper starter heaters.
15. Poor power regulation (unbalanced line). Consult with power company.
16. V-Belts pulled excessively tight.
17. Leaking or maladjusted centrifugal pilot valve, or defective O-Ring on pilot valve.
18. Carbon on top of piston.
19. Leaking, broken, carbonized or loose valves.
20. Leaking, broken or worn air head unloader parts. Auxiliary valve dirty, seats worn.
21. Worn or scored connecting rod, piston pin or crank pin bushings.
22. Defective ball bearing on crankshaft or on motor shaft. Loose motor fan.
23. Piston rings broken or not seated in, end gaps not staggered, stuck in grooves, rough, scratched or excessive end gap .015" (.381mm) under 5" (127 mm) or over .027" (.685 mm) 5" (127 mm and up, or side clearance over .006" (.152 mm).
24. Cylinders or pistons scratched, worn or scored.
25. Adjust rate of water flow through aftercooler.
26. Intercooler tubes plugged.
27. Malfunctioning intercooler vent valve.



K50



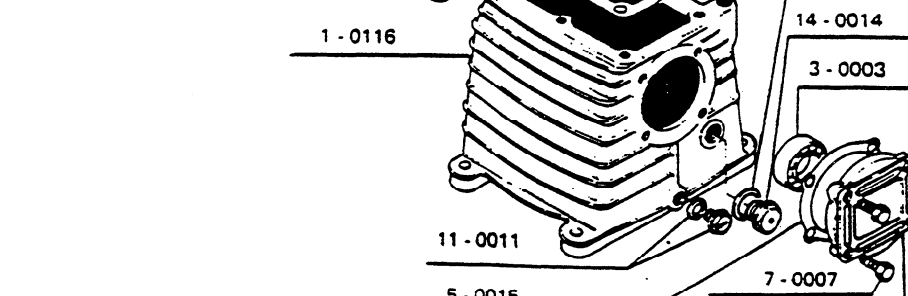
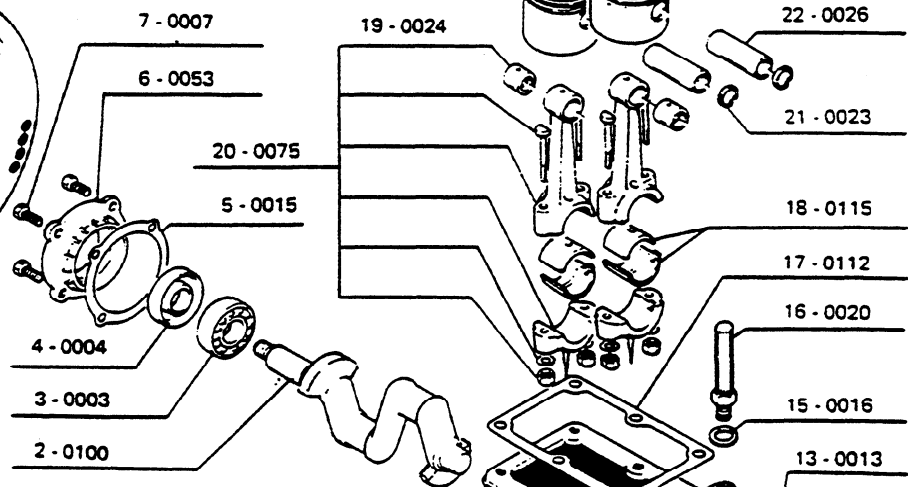
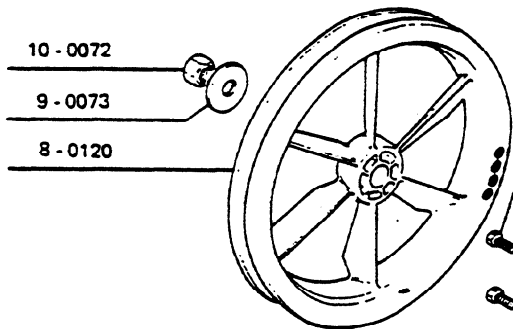
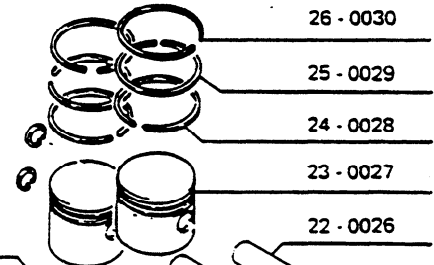
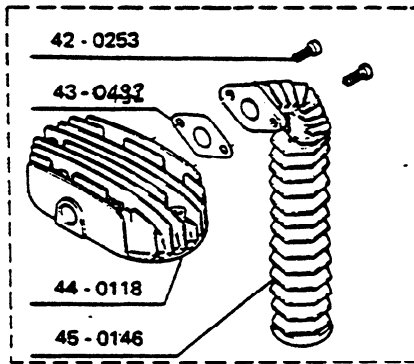
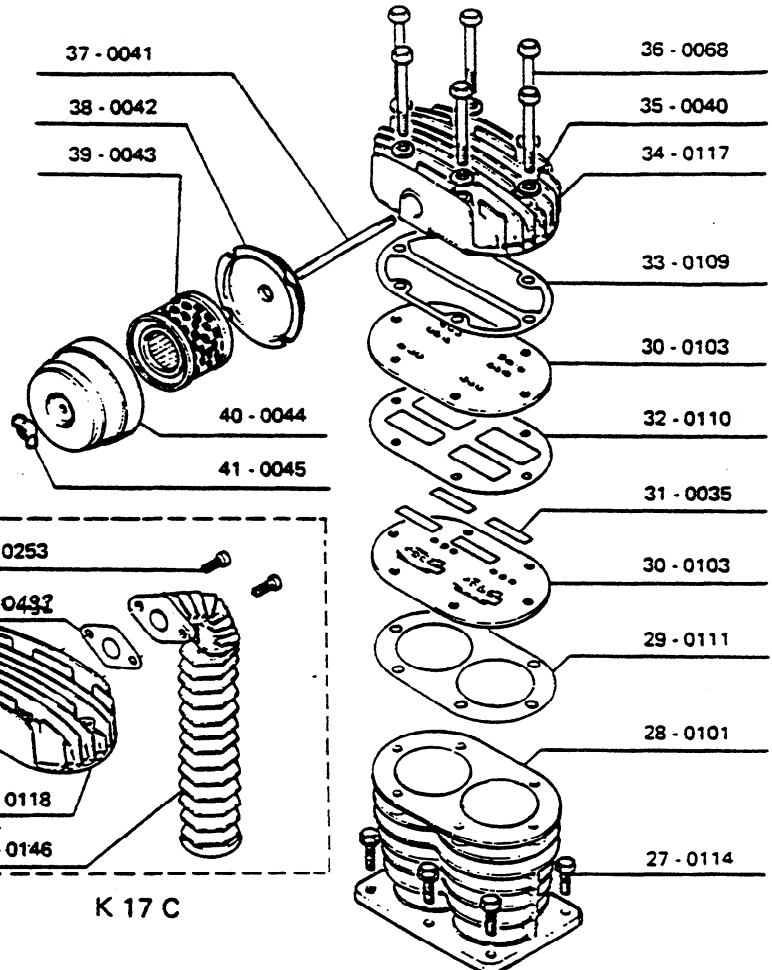
REF.: 1/1985

PARTS LISTING for K - 50

1. 0428 Crankcase		29. 0395 Slotted ring (Sm. P)	
2. 0371 Crankshaft		30. 0397 Stepped ring (Sm. P)	
3. 0372 Ball bearing		31. 0399 Compression ring (Sm.P)	
4. 0373 Bi-angular bearing		32. 0402 Cylinder-crankcase bol	
5. 0374 Flywheel support gasket		33. 0401 Cylinder	
6. 0375 Flywheel support		34. 0403 Cylinder-valve gasket	
7. 0424 Flywheel support bolt (4)		35. 0404 Valve plate	
8. 0376 Flywheel		36. 0407 Valve plate gasket	
9. 0377 Flywheel thrust washer		37. 0408 Cylinder head gasket	
10. 0378 Flywheel nut		38. 0409 Cylinder head	
11. 0011 Oil drain plug		39. 0417 Aftercooler	
12. 0444 Oil drain plug gasket		40. 0414 Air filter elbow	
13. 0445 Oil sight gauge		41. 0247 Filter elbow bolt (2)	
14. 0379 Bearing support		42. 0418 Aftercooler bolt (2)	
15. 0382 Bearing support gasket		43. 0045 Air filter wing nut	
16. 0016 Oil filler plug gasket		44. 0235 Air filter casing	
17. 0020 Oil filler plug		45. 0238 Air filter cartridge	
18. 0386 Rod bushing-crankshaft		46. 0412 Air filter cover	
19. 0388 Rod bushing-wrist pin		47. 0413 Filter tension rod	
20. 0369 Complete rod set		48. 0410 Head bolt (6)	
21. 0390 Wrist pin circlip (Sm.P)		49. 0411 Head bolt washer (6)	
22. 0391 Wrist pin (Lg. P)		50. 0419 Aftercooler gasket	
23. 0394 Piston (Large)		51. 0415 Left innercooler	
24. 0396 Slotted scraper ring (LgP)		52. 0240 Valve (Small piston)	
25. 0398 Stepped ring (Lg.P)		53. 0406 Valve (Large piston)	
26. 0400 Compression ring (Lg.P)		54. 0416 Right innercooler	
27. 0393 Piston (Small)		55. 0421 Innercooler gasket (2)	
28. 0392 Wrist pin (Small piston)		56. 0420 Innercooler connector	



K17



REF.: 1/1985

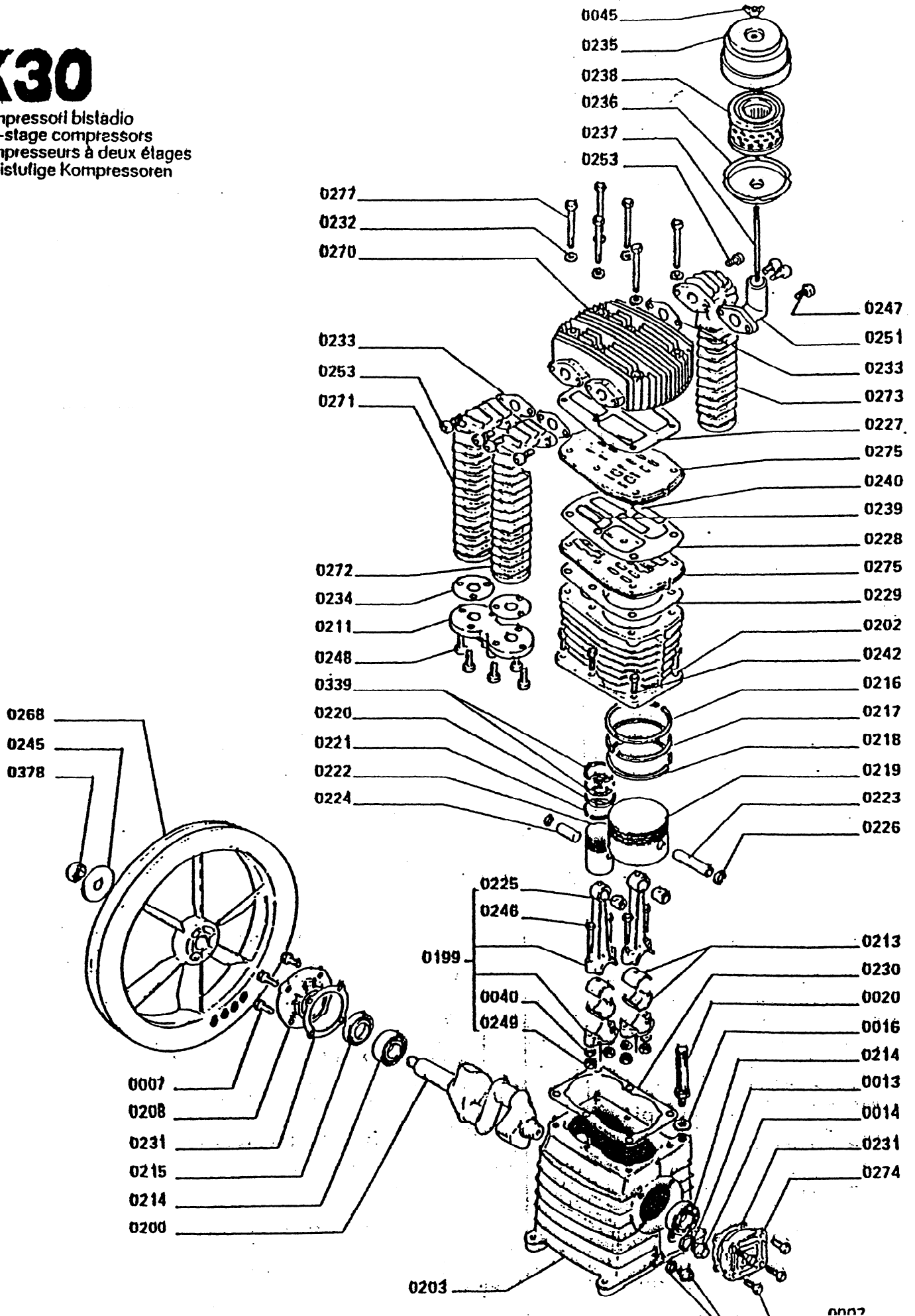
CHINOOK®

PARTS LISTING for K - 17

1. 0116 Crankcase		29. 0111 Valve plate gasket	
2. 0100 Crankshaft		30. 0103 Valve plate	
3. 0003 Ball bearing		31. 0035 Valve (4)	
4. 0004 Bi-angular bearing		32. 0110 Valve seat plate	
5. 0015 Flywheel support gasket		33. 0109 Cylinder head gasket	
6. 0053 Flywheel support		34. 0117 Cylinder head	
7. 0007 Flywheel support bolt (4)		35. 0040 Cylinder head washer (6)	
8. 0120 Flywheel		36. 0068 Cylinder head bolt (6)	
9. 0073 Flywheel thrust washer		37. 0041 Air filter tension rod	
10. 0072 Flywheel nut		38. 0042 Air filter cover	
11. 0011 Oil plug		39. 0043 Air filter cartridge	
12. 0083 Bearing support		40. 0044 Air filter casing	
13. 0013 Oil sight gauge gasket		41. 0045 Air filter wing nut	
14. 0014 Oil sight gauge		42. 0253 Aftercooler bolt (2)	
15. 0016 Oil filler gasket		43. 0492 Aftercooler gasket	
16. 0020 Oil filler plug		44. 0118 Cylinder head	
17. 0112 Crankcase gasket		45. 0146 Aftercooler	
18. 0115 Rod bushing - crankcase		46.	
19. 0024 Rod bushing & bolt set		47.	
20. 0075 Connecting rod		48.	
21. 0023 Wrist pin circlip (2)		49.	
22. 0026 Wrist pin		50.	
23. 0027 Piston		51.	
24. 0028 Slotted oil scraper ring		52.	
25. 0029 Stepped scraper ring		53.	
26. 0030 Compression ring		54.	
27. 0114 Cylinder bolt (6)		55.	
28. 0101 Cylinder		56.	

K30

Compressori bistadio
Two-stage compressors
Compresseurs à deux étages
Zweistufige Kompressoren



1. 0203 Crankcase		29. 0221 Slotted oil ring (SMP)	
2. 0200 Crankshaft		30. 0220 Stepped oil ring (SMP)	
3. 0214 Roller bearing		31. 0339 Compression ring (SMP)	
4. 0215 Bi-angular bearing		32. 0242 Crankcase screw (6)	
5. 0231 Flywheel plate		33. 0202 Cylinder	
6. 0208 Flywheel plate gasket		34. 0229 Cylinder valve gasket	
7. 0007 Flywheel plate screw (4)		35. 0275 Valve plate	
8. 0268 Flywheel		36. 0228 Valve gasket	
9. 0245 Flywheel washer		37. 0239 Valve (Small piston)	
10. 0378 Flywheel nut		38. 0240 Valve (Large piston)	
11. 0011 Oil drain plug		39. 0227 Cylinder head gasket	
12. 0274 Support		40. 0273 Aftercooler	
13. 0014 Oil sight gauge		41. 0233 Aftercooler gasket	
14. 0013 Gasket		42. 0251 Air filter elbow	
15. 0016 Oil plug gasket		43. 0253 Filter elbow screw (2)	
16. 0020 Oil plug		44. 0045 Air filter nut	
17. 0230 Crankcase gasket		45. 0235 Filter casing	
18. 0213 Lower rod bearing		46. 0238 Filter cartridge	
19. 0225 Top rod bushing		47. 0236 Filter cover	
20. 0199 Connecting rod complete		48. 0237 Air filter tension rod	
21. 0219 Large piston		49. 0277 Cylinder head bolt (6)	
22. 0226 Circlip		50. 0232 Cylinder head washer 6	
23. 0223 Piston pin (Large piston)		51. 0270 Cylinder head	
24. 0218 Slotted oil ring (Lg.p)		52. 0271 Left innercooler	
25. 0217 Stepped oil ring (Lg.p)		53. 0272 Right innercooler	
26. 0216 Compression ring (Lg.p)		54. 0234 Innercooler gasket (2)	
27. 0224 Piston pin (Small piston)		55. 0211 Innercooler connector	
28. 0222 Piston (small)		56. 0248 Innercooler conn. screw	

**CERTIFICATE
OF
LIMITED WARRANTY**

THE C.A.S.E. COMPRESSOR IS WARRANTED TO BE FREE OF DEFECTS IN MATERIAL AND WORKMANSHIP FOR A PERIOD OF ONE YEAR FROM DATE OF PURCHASE. IF ANY PART OR PARTS OF THE C.A.S.E. COMPRESSOR FAILS TO CONFORM TO THE CHARACTERISTICS WARRANTED WITHIN THE WARRANTY PERIOD, WE WILL REPLACE SUCH PART OR PARTS AT NO CHARGE, EXCLUSIVE OF TRANSPORTATION CHARGES, WHICH ARE THE RESPONSIBILITY OF THE PURCHASER. THIS WARRANTY EXTENDS TO THE ORIGINAL PURCHASER FOR USE OF THE C.A.S.E. COMPRESSOR AND IS NOT TRANSFERABLE WITHOUT OUR WRITTEN PERMISSION.

THERE ARE NO EXPRESS WARRANTIES EXCEPT AS CONTAINED IN THIS LIMITED WARRANTY STATEMENT AND IMPLIED WARRANTIES, INCLUDING THOSE OF MERCHANTABILITY AND FITNESS FOR A PARTICULAR PURPOSE ARE LIMITED TO THE PERIOD OF ONE YEAR FROM DATE OF PURCHASE.

OUR LIABILITY IS LIMITED SOLELY TO REPLACEMENT OF NONCONFORMING PARTS AS SET FORTH HEREIN AND DOES NOT INCLUDE ANY LIABILITY FOR ANY INCIDENTAL, CONSEQUENTIAL, OR OTHER DAMAGES OF ANY KIND. THIS WARRANTY GIVES YOU SPECIFIC LEGAL RIGHTS, AND YOU MAY ALSO HAVE OTHER RIGHTS WHICH VARY FROM STATE TO STATE.

PERFORMANCE OF THIS WARRANTY IS OBTAINABLE BY THE RETURN OF THIS COMPRESSOR TO SELLER. WARRANTY DOES NOT INCLUDE ELECTRIC MOTORS OR GAS ENGINES, WHICH ARE WARRANTED BY THE MANUFACTURER.