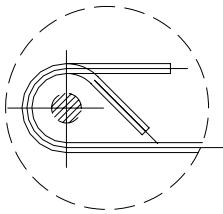
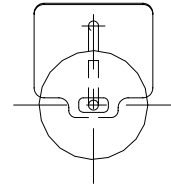
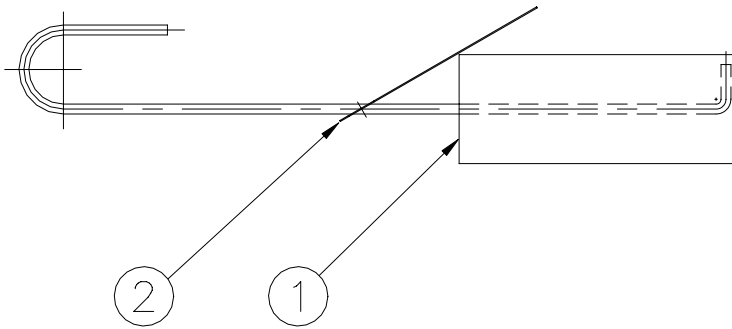


LET.	REVISIONS	DATE	BY
A	REVISED/REDRAWN (ACAD), EO #C-2226	05-14-92	DJP



NOTE: PINCH CLOSED AFTER INSTALLED
IN STEAM GENERATOR AS SHOWN.

THIS DESIGN DESCRIBES A PROPRIETARY ITEM AND IS THE PROPERTY OF CLEVELAND RANGE.
THIS DRAWING IS NOT TO BE COPIED OR USED WITHOUT THE APPROVAL OF CLEVELAND RANGE

2	1	14885	TAG, ANODE	
1	1	04080	ANODE CASTING ASS'Y	
ITEM	QTY	PART NO.	DESCRIPTION	
TOLERANCES (EXCEPT AS NOTED)		CLEVELAND RANGE INC. 1333 East 179th St. Cleveland, Ohio 44110-2574		
DECIMAL $\pm .030$	SCALE 1=2	DRAWN BY DJP	APPROVED BY	
ANGULAR $\pm 1^\circ$	TITLE ANODE ASSEMBLY CORROSION PREVENTATIVE			
AC	DATE 05-14-92	DRAWING NO. A- 43895	REV A	