

Installation Instructions

UNISTAND34 Equipment Stand for SteamCraft®, SteamCub™, SteamChef™, and SteamChef™ 6 Electric and Gas Steamers

The Installation of Cleveland Range steamers on this stand should only be performed by Cleveland Range authorized technicians. Read entire installation procedure before beginning.

This stand is intended for (1) of the following steamers: SteamCraft® models 21CET8, 21CET16, 21CGA5; SteamCub™ models 1SCE*, 1SCEMCS*; SteamChef™ models 22CET3A, 22CET6, 22CGT3, 22CGT6; and SteamChef™ 6 models 22CCT6.

UNISTAND34 (P/N 111721) PARTS LIST

Item No.	Part No.	Description	Quantity
1	260AZE	Instructions for Installing Steamers on Unistand34	1
2	111765	Unistand34 Equipment Stand Assembly	1
3	107220	Washer, Fender, 13/32" ID, 1½" OD, SST	4
4	WR50167	Washer, Lock, 3/8", SST	4
5	19134	Screw, Hex Head, 3/8-16 x 1" Long, SST	4
6	111013	Washer, Fender, 17/32" ID x 1½" OD, SST	4
7	23153	Washer, Lock, ½, SST	4
8	111012	Screw, Hex Head, ½-13 x 3/4" Long, SST	4

* **Important:** To install a Cleveland Range SteamCub™ Steamer or SteamChef™ 6, an additional SteamCub™ Stand Mounting Kit, P/N 109194, or SteamChef™ 6 Stand Mounting Kit, P/N KE004073 will be needed. This Kit consists of:

SteamCub™ Stand Mounting Kit, P/N 109194 (Not Included with Stand)

1	109189	Nut, Special, Cub Stand Mounting, ¾-10 UNC, SST	4
2	109193	Washer, 1-1/16" ID x 2" OD x 1/8" Thick, SST	4

SteamChef™ 6 Stand Mounting Kit, P/N KE004073 (Not Included with Stand)

1	KE604153	FOOT ADAPTER; STACK STAND LEG; 22CCT6	4
---	----------	---------------------------------------	---

See Pages 2 - 3 for Installation of SteamCraft® Steamers

See Pages 4 - 5 for Installation of SteamCub™ Steamers

See Pages 6 - 7 for Installation of SteamChef 6™ Steamers

See Pages 8 - 10 for Installation of SteamChef™ ELECTRIC Steamers
See Pages 11 - 12 for Installation of SteamChef™ GAS Steamers

18301 St. Clair Street
Cleveland, Ohio 44110
Phone: (216) 481-4900
Fax: (216) 481-3782
www.clevelandrange.com



CLEVELAND

Steamer Installation

(Models 21CET8, 21CET16, 21CGA5)

In addition to knowledge of this procedure, installer must be familiar with the instructions supplied with each SteamCraft® Steamer. These instructions are Cleveland Range P/N 260API (Model 21CET8), 21CGA5-INM (Model 21CGA5), and 260APK (Model 21CET16).

1. Position stand in selected location so that feet with round mounting pads are at the rear. Use adjustable feet to level stand front-to-back and side-to-side.
2. Set steamer directly on stand as shown in Figure 2 on the next page (4-inch legs provided with steamer are not used when installing SteamCraft® steamers on a stand). Align steamer so that front mounting bolts will come up through holes marked "A" in Figure 1 below.

NOTE: It is especially important when installing a gas fired steamer that the bottom ventilation holes line up with those in the stand (See Figure 1 below). Be sure that these holes line up before securing gas steamer to stand.

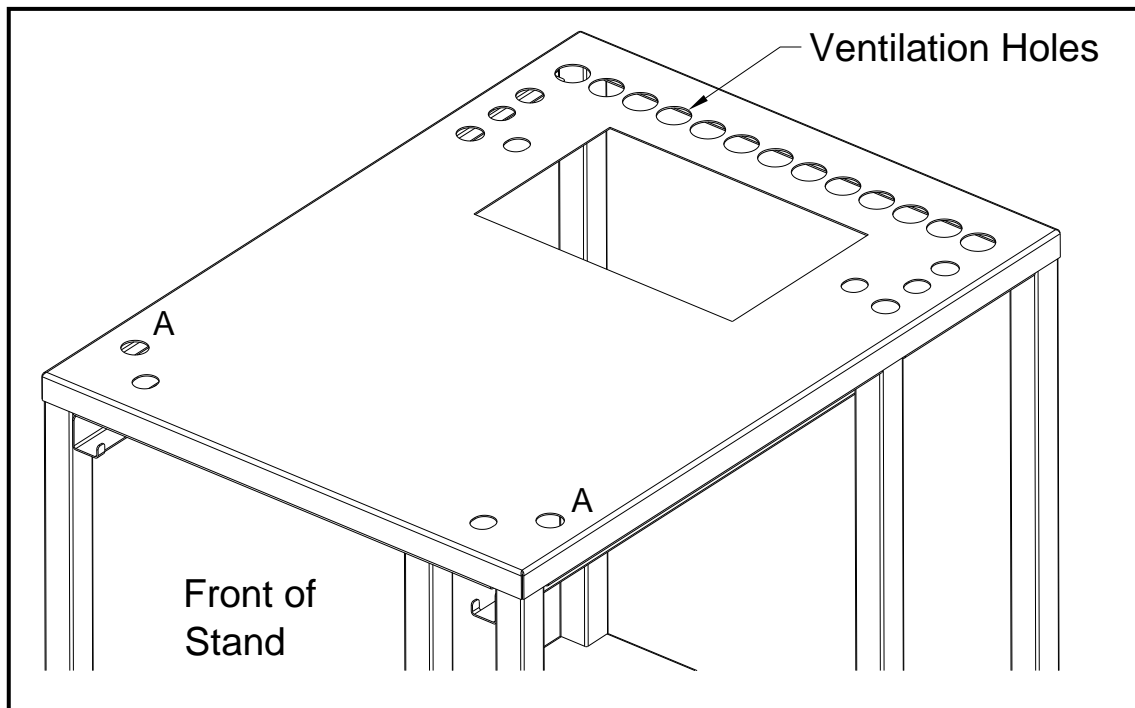


Figure 1
Ventilation Holes for Gas Steamers

3. Secure steamer to stand using 4 sets of bolts and washers provided as shown in Figure 2 (Items 2, 3 and 4) on the following page.
4. Seal any gaps between steamer and stand with a suitable RTV Sealant (not provided) as shown in Figure 2. Suitable RTV sealant is a Food Grade silicone sealant rated at least 250°F and Listed or Classified to ANSI/NSF 51 or 61 Standards.
5. Complete installation of steamer as outlined in its installation manual.

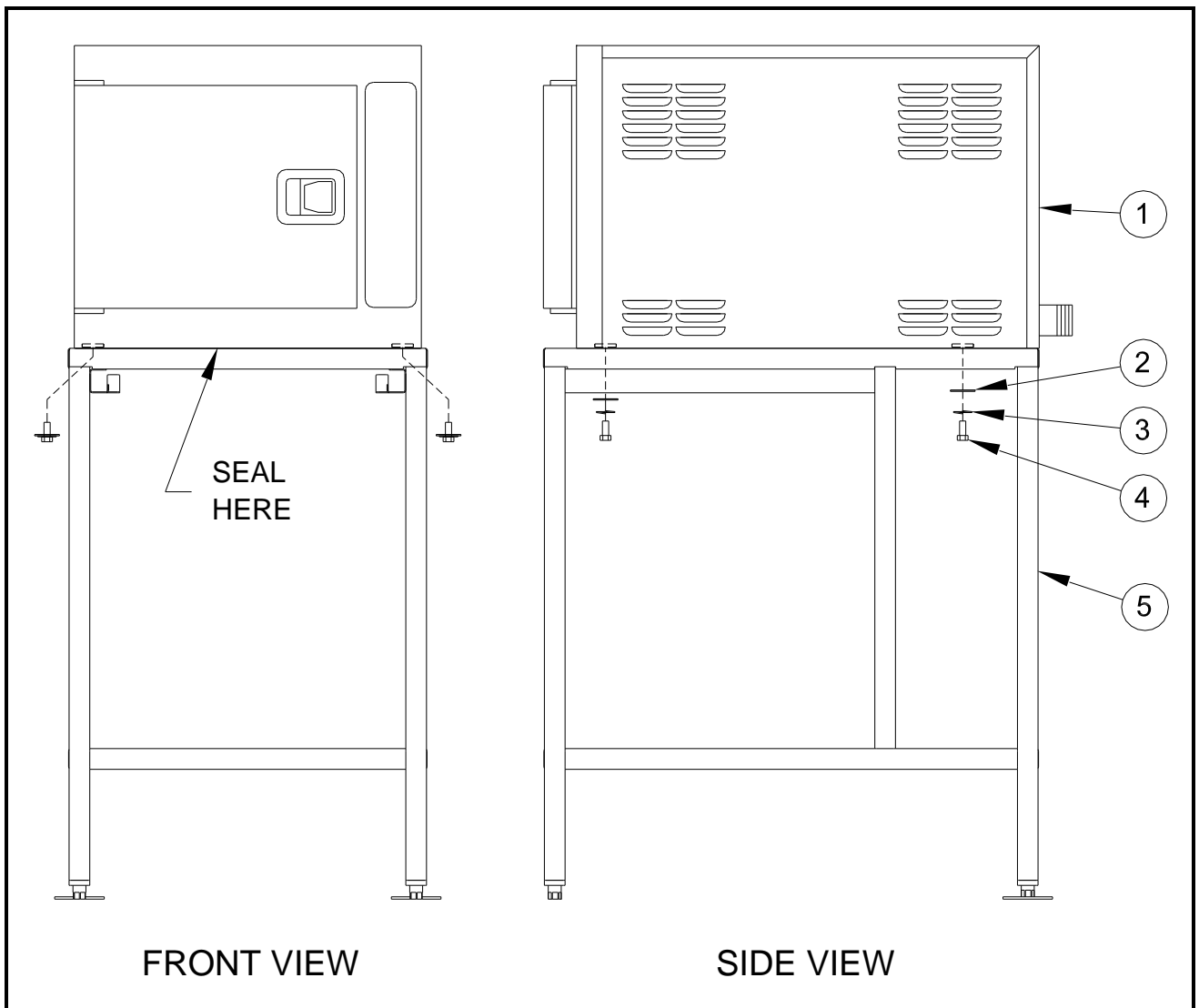


Figure 2
SteamCraft® Mounting Instructions
(Model 21CET8 shown on Unistand34)

1	-	SteamCraft® Steamer (SteamCraft® 21CET8 Shown)	1
2	107220	Washer, Fender, 13/32" ID, 1½" OD, SST	4
3	WR50167	Washer, Lock, 3/8", SST	4
4	19134	Screw, Hex Head, 3/8-16 x 1" Long, SST	4
5	111765	Unistand34 Equipment Stand Assembly	1
Item No.	Part No.	Description	Quantity

SteamCub™ Steamer Installation

(Model 1SCE and 1SCEMCS)

In addition to knowledge of this procedure, installer must be familiar with the instructions supplied with each SteamCub™ steamer. These instructions are part of Cleveland Range P/N 1SCEOPM and 1SCEMCSOPM.

For this installation, SteamCub™ Stand Mounting Kit, P/N 109194, is required and must be ordered separately as it is not included with stand.

An optional Top Cover Kit, P/N 111728, is available for the stand. If this cover is being used, it must be installed before SteamCub™ is placed on stand.

1. Position stand in selected location so that feet with round mounting pads are at the rear. Use adjustable feet to level stand front-to-back and side-to-side.
2. Place optional top cover, if used, on stand so that four holes in cover line up with holes in stand (See Figure 3).
3. Place four washers from kit 109194 onto stand over the four SteamCub™ mounting holes (See Figure 3).

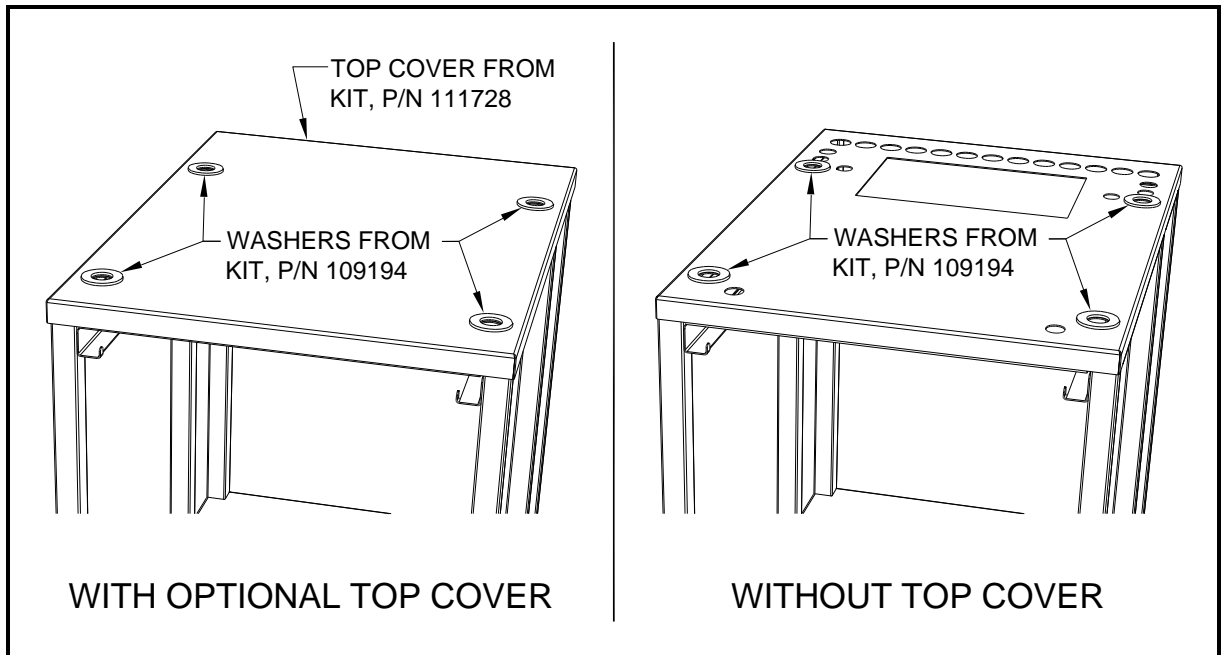
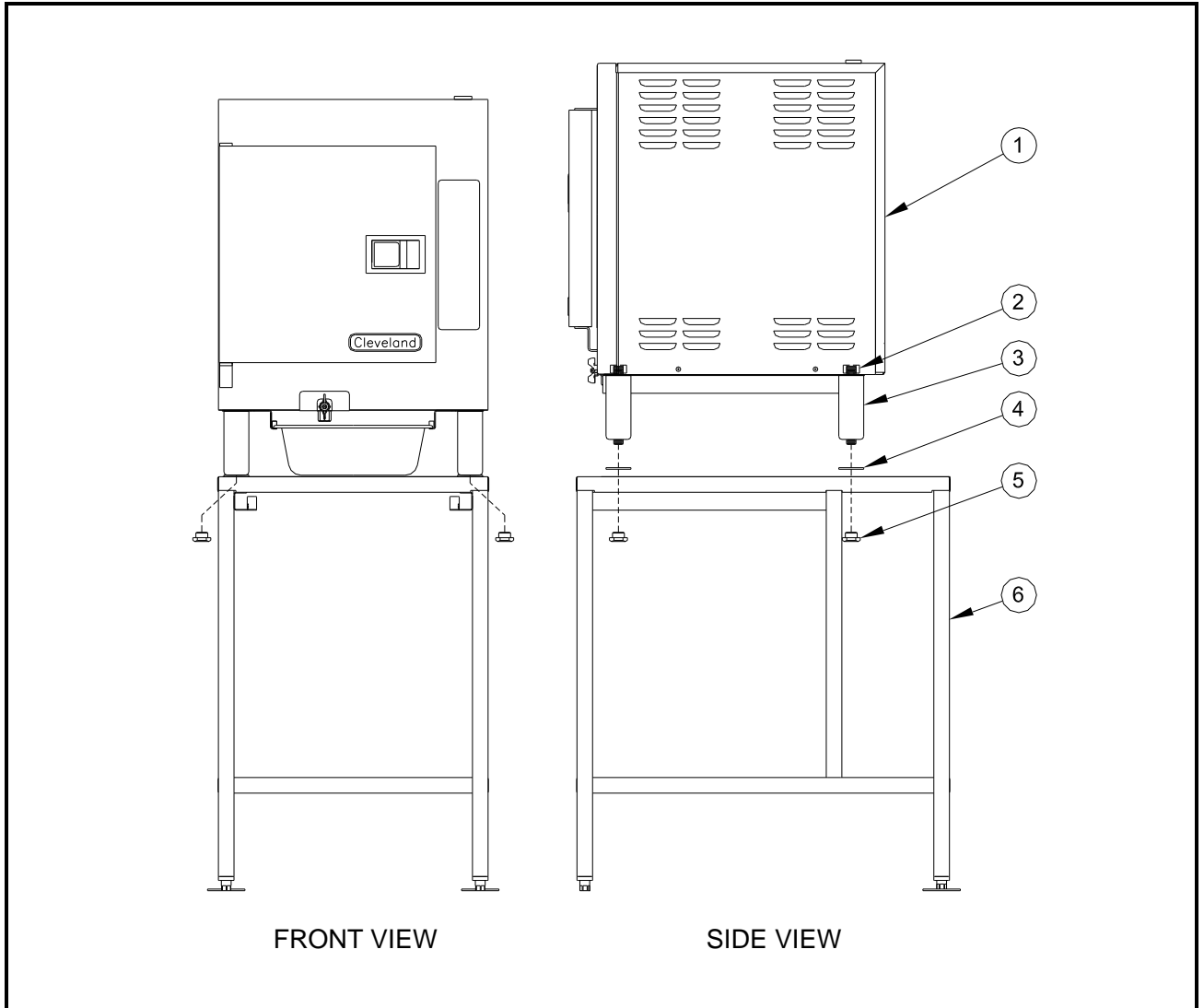


Figure 3
SteamCub™ Mounting Washer Placement

4. Screw four legs provided with SteamCub™ into nuts inside bottom of steamer as shown in Figure 4 (Items 2 and 3) on the following page.
5. Completely unscrew the coated flanged foot from each leg and set steamer onto stand so that legs are resting on mounting washers with studs passing through holes in top of stand. See Figure 4.
6. Secure steamer to stand using four special nuts (Item 5) from kit 109194 as shown in Figure 4. Tighten special nuts so that they extend through mounting washer and into leg as necessary to secure steamer to stand.
7. Complete installation of steamer as outlined in its installation manual.

1	-	SteamCub™ Steamer (SteamCub™ 1SCE Shown)	1
2	14668*	Nut, Hex, Jam, ¾-10 UNC	4
3	061623*	Leg, 6", with Coated Flanged Foot (foot removed)	4
4	109193	Washer, 1-1/16" ID x 2" OD x 1/8" Thick, SST	4
5	109189	Nut, Special, Cub Stand Mounting, ¾-10 UNC, SST	4
6	111765	Unistand34 Equipment Stand Assembly	1
Item No.	Part No.	Description	Quantity



*Supplied-with or Part-of SteamCub™ Steamer

Figure 4

**SteamCub™ Mounting Instructions
(Model 1SCE shown on Unistand34)**

SteamChef™ 6 Steamer Installation

(Model 22CCT6)

In addition to knowledge of this procedure, installer must be familiar with the instructions supplied with each SteamChef™ 6 steamer. These instructions are part of Cleveland Range P/N KE004048 and KE004049.

For this installation, SteamChef™ 6 Stand Mounting Kit, P/N KE004073, is required and must be ordered separately as it is not included with stand.

To Mount the SteamChef™ 6 steamer on the UNISTAND34 you must first take out the Aluminum Foot Leveling for leg P/N KE604161 and replace all 4 legs with new S.S.

adapters P/N KE604153 that are included in the SteamChef™ 6 Stand Mounting Kit, P/N KE004073 as shown in the below Pictures.

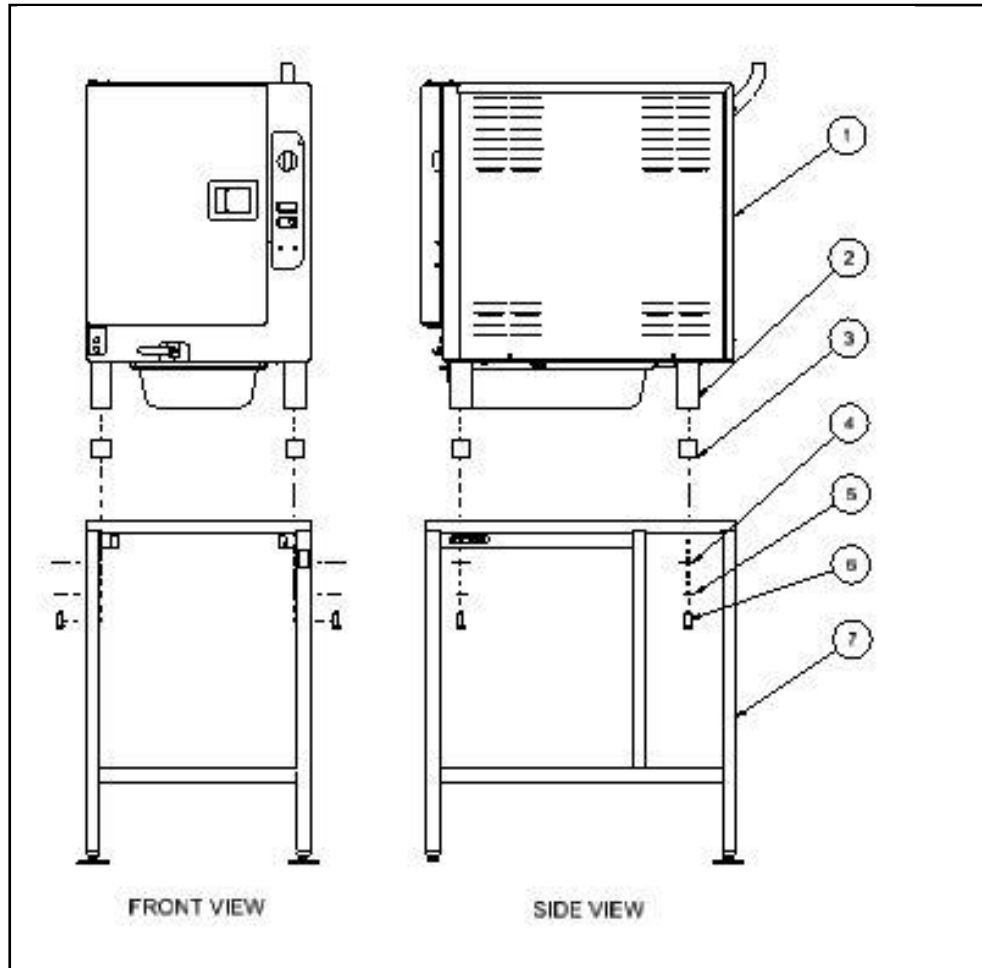
1. By using a Snap Ring Tool Remover, Remove the Snap Ring from the bottom of the foot leveler P/N KE604161
2. Unscrew the Foot Leveler P/N KE604161 from all 4 legs and Replace them with the new S.S. adapters P/N KE604153 (See Pictures Below)



Figure 3
SteamChef™ 6 Re-Placement with new Foot Adapter

3. Screw four legs with new SS adapters of SteamChef™ 6 into nuts inside bottom of steamer as shown in Figure 4 (Items 1 and 2) on the following page.
4. Align steamer so that mounting bolts come up through holes marked “B” in Figure 7 (Page 10)
5. Rest the S.S. foot adapters from each leg of the steamer onto stand so the foot adapters holes are concentric with the holes on UNISTAND34 and resting on the top of stand. (See Figure 4)
6. Secure steamer to stand using four special Washers nuts P/N 111013 (Item 4), four 1/2 Lock washers P/N 23153 (Item 5), and four 1/2-13 Hex head Screws P/N 111012 (Item 6) from UNISTAND34 Parts kit as shown in Figure 4. Tighten the 1/2-13 Hex head screws so that the SteamChef™ 6 is secure to stand.

7. Complete installation of steamer as outlined in its installation manual.



*Supplied-with or Part-of SteamChef™ 6 Steamer

Figure 4
SteamChef™ 6 Mounting Instructions
(Model 22CCT6 shown on Unistand34)

1	-	SteamChef™ 6 Steamer (SteamChef™ 6 22CCT6 Shown)	1
2	KE003943*	Weldment; Leg; 22CCT6	4
3	KE604153	Foot Adapter; Stand Leg; 22CCT6	4
4	111013	Washer, Fender, 17/32" ID x 1½" OD, SST	4
5	23153	Washer, Lock, ½, SST	4
6	111012	Screw, Hex Head, ½-13 x ¾" Long, SST	4
7	111765	Unistand34 Equipment Stand Assembly	1
Item No.	Part No.	Description	Quantity

SteamChef™ ELECTRIC Steamer Installation (Models 22CET3A, 22CET6)

In addition to knowledge of this procedure, installer must be familiar with the instructions supplied with each SteamChef™ Steamer. These instructions are Cleveland Range P/N 22CET-OPM.

1. Position stand in selected location so that feet with round mounting pads are at the rear. Use adjustable feet to level stand front-to-back and side-to-side.
2. Set steamer directly on stand as shown in Figure 6 on the next page (4-inch legs provided with steamer are not used when installing SteamChef™ steamers on a stand). Align steamer so that rear mounting bolts will come up through holes marked "B" in Figure 5 below.

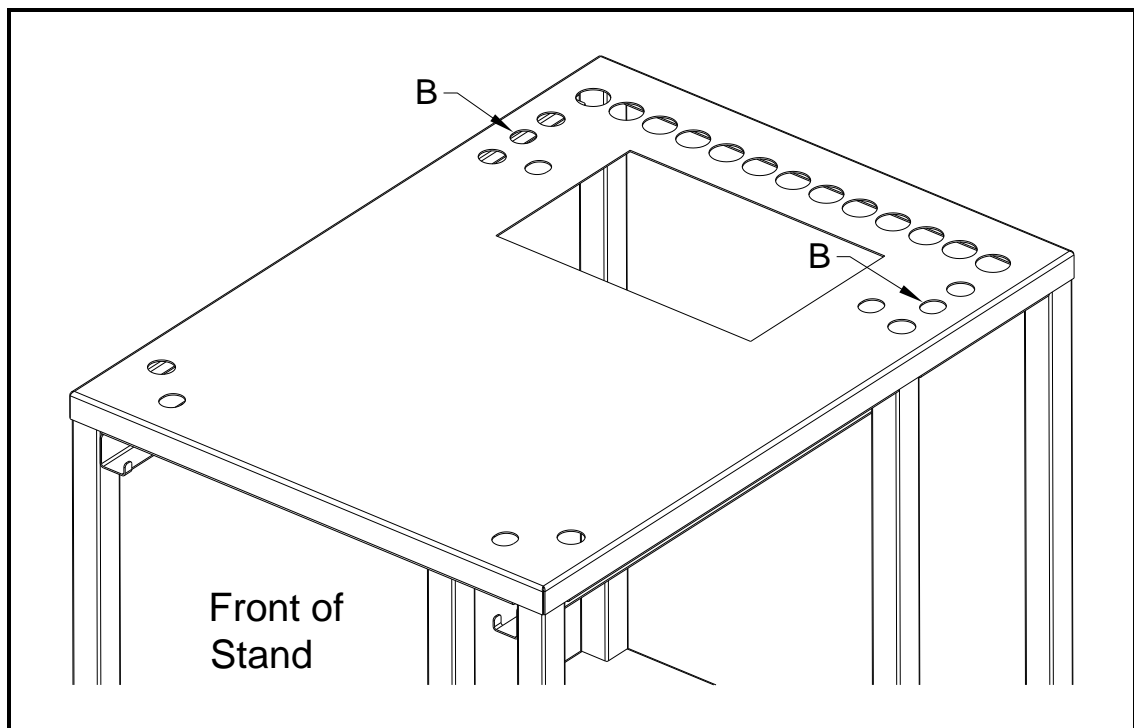
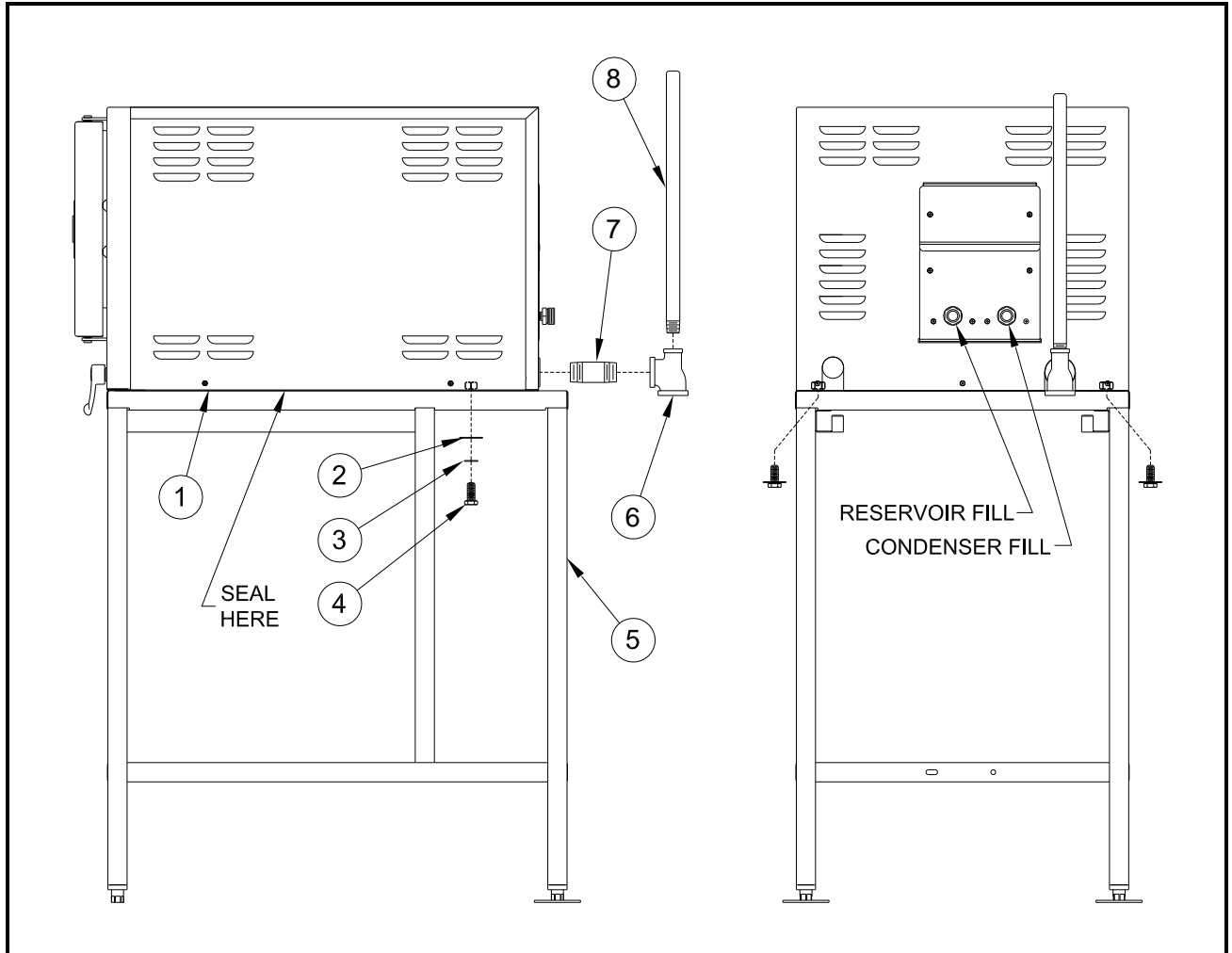


Figure 5
SteamChef™ Mounting Holes

3. Secure steamer to stand using 2 sets of bolts and washers provided as shown in Figure 6 (Items 2, 3 and 4) on the following page.
4. Remove right side panel and seal any gaps between steamer and stand with a suitable RTV Sealant (not provided) as shown in Figure 6. Suitable RTV sealant is a Food Grade silicone sealant rated at least 250°F and Listed or Classified to ANSI/NSF 51 or 61 Standards. Replace right side panel.

5. Attach drain nipples and tee as shown in Figure 6 (Items 6, 7, and 8) on the following page. Use a suitable pipe thread sealant (not provided) on all pipe threads.
6. Complete installation of steamer as outlined in its installation manual.



*Supplied-with or Part-of SteamChef™ Steamer

Figure 6
SteamChef™ Mounting Instructions
(Model 22CET3A shown on Unistand34)

SteamChef™ GAS Steamer Installation (Models 22CGT3 and 22CGT6)

In addition to knowledge of this procedure, installer must be familiar with the instructions supplied with each SteamChef™ Steamer. These instructions are Cleveland Range P/N's 22CGT3&6-OPM and 22CGT3&6-INM.

For this installation, SteamChef™ Stand Mounting Kit, P/N 111895, is required and must be ordered separately as it is not included with stand.

An optional Top Cover Kit, P/N 111894, is available for the stand. If this cover is being used, it must be installed before SteamChef™ is placed on stand.

1. Position stand in selected location so that feet with round mounting pads are at the rear. Use the adjustable feet to level the stand front-to-back and side-to-side.
2. Place optional top cover, if used, on stand so that the four holes in cover line up with their corresponding holes in stand (See Figure 3).
3. Set the steamer directly on stand as shown in Figure 8 on the next page.
4. Remove lower flanged foot from each leg and install Stand Adaptors P/N 111892.
5. Align steamer so that mounting bolts come up through holes marked "B" in Figure 7 below.

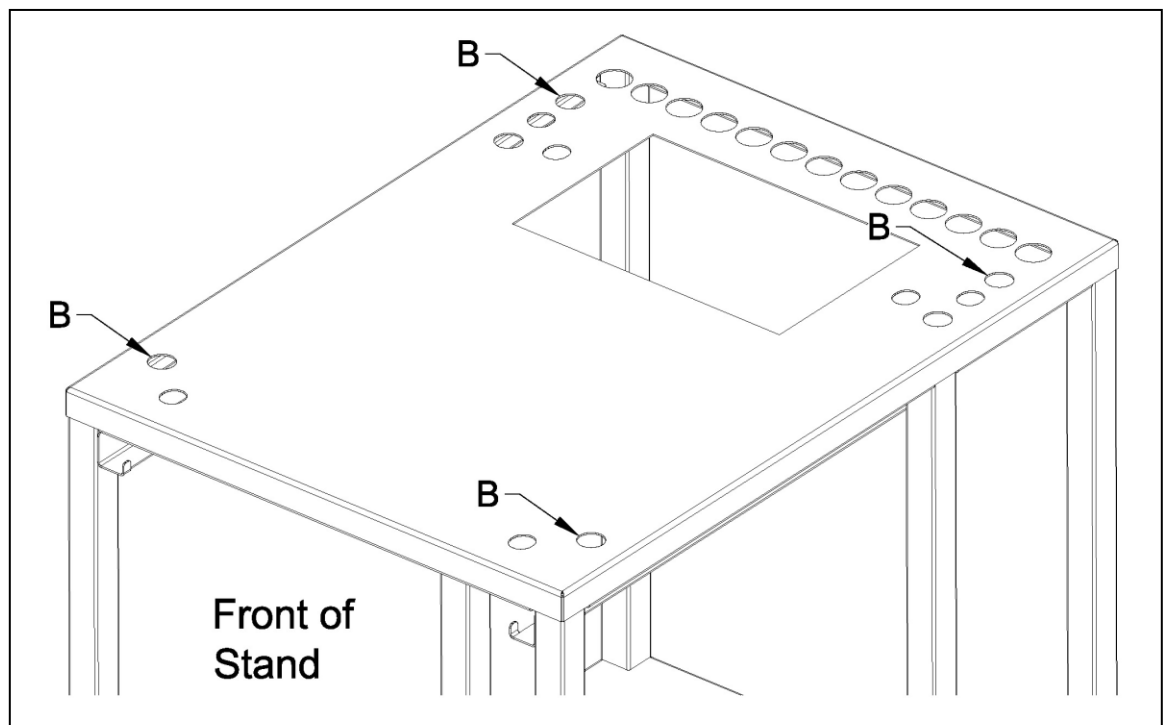


Figure 7
SteamChef™ Gas Mounting Holes

1	-	SteamChef™ Steamer (SteamChef™ 22CET3A shown)	1
2	111013	Washer, Fender, 17/32" ID x 1½" OD, SST	2
3	23153	Washer, Lock, ½", SST	2
4	111012	Screw, Hex Head, ½-13 x 3/4" Long, SST	2
5	111765	Unistand34 Equipment Stand Assembly	1
6	111153*	Tee, Reducing, 1" NPT x ½" NPT x 1" NPT, Brass	1
7	14296*	Nipple, 1" NPT x 3" Long, Brass, TBE	1
8	110804*	Nipple, ½" NPT x 17" Long, Brass, TOE	1
Item No.	Part No.	Description	Qty.

6. Secure steamer to stand using Kit P/N 111895 in Figure 9 on Page 10.
 - If Optional Top Cover is used, see Figure 8 on Page 9.

SteamChef™ GAS Steamer Installation (Models 22CGT3 and 22CGT6)

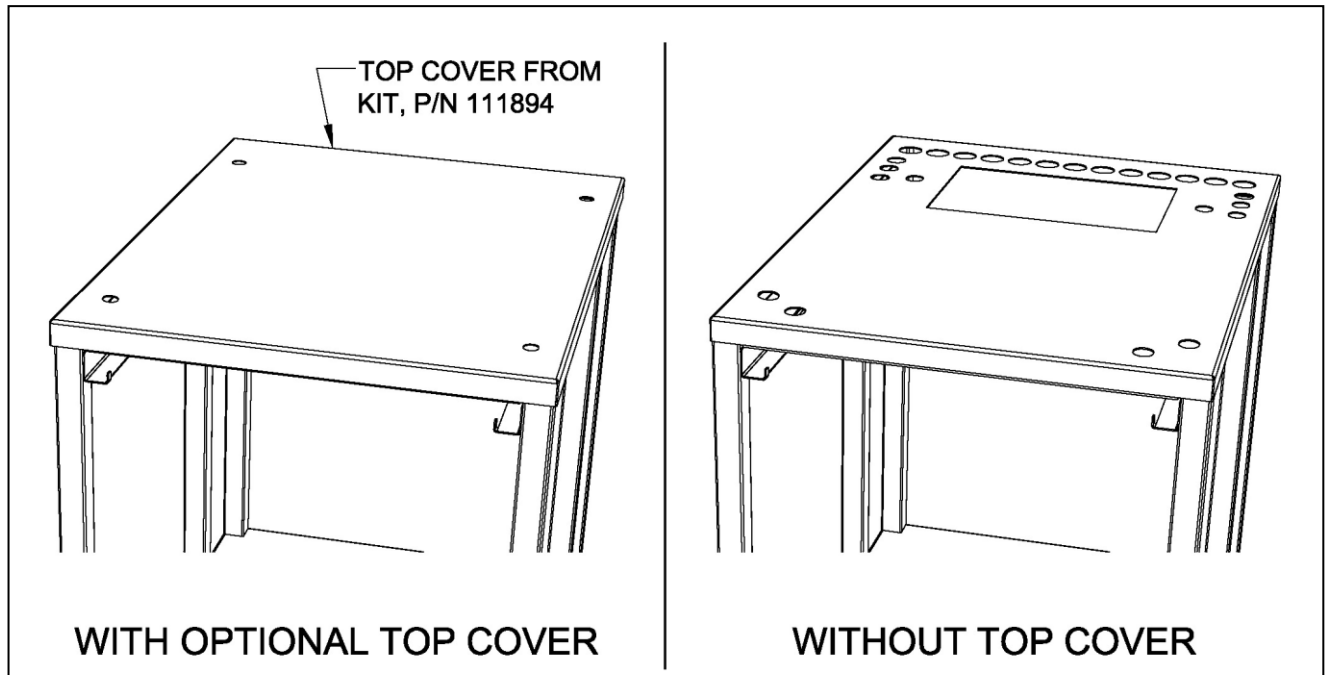


Figure 8
Stand With and Without Optional Top Cover

7. Complete installation of steamer as outlined in its installation manual.

- If Optional Top Cover is used, refer to separate instruction 260AZN for sealing cover to stand.

SteamChef™ GAS Steamer Installation (Models 22CGT3 and 22CGT6)

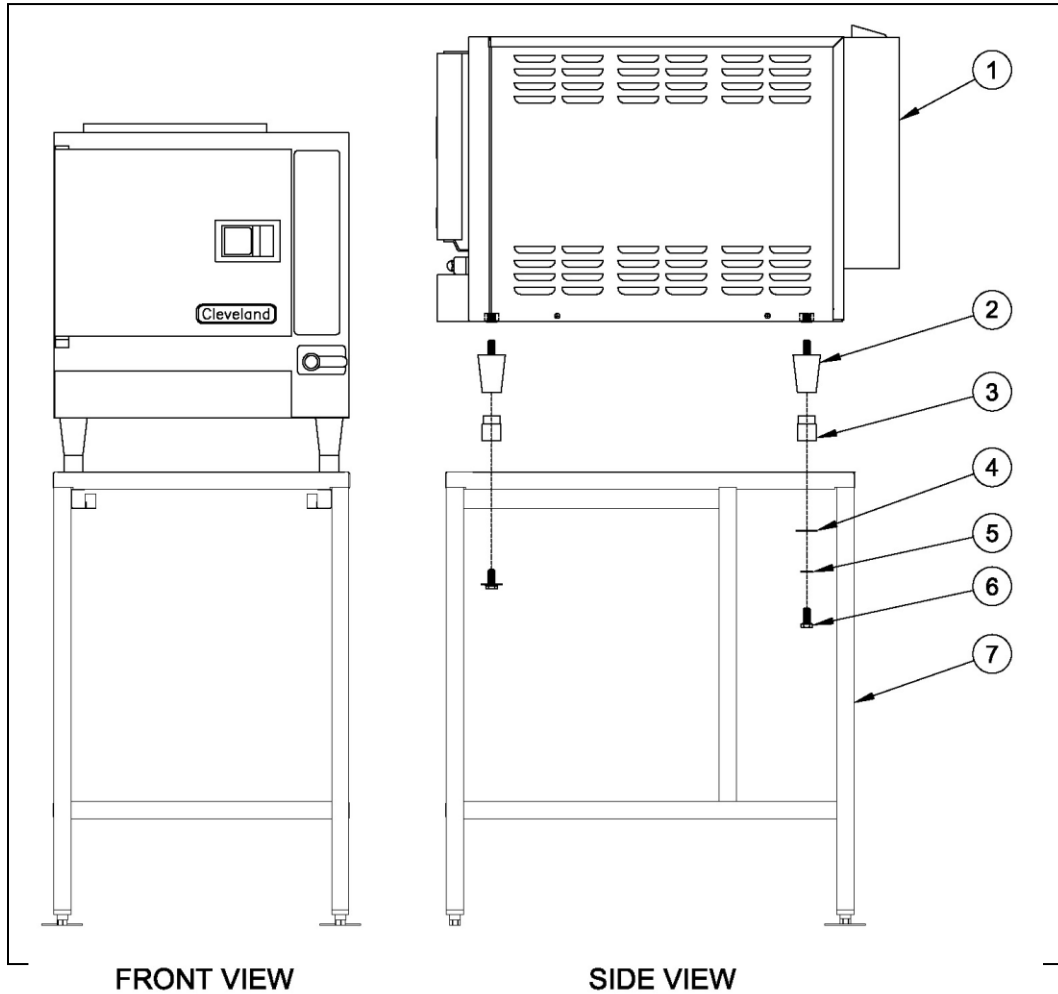


Figure 9

SteamChef™ GAS Mounting Instructions (Model 22CGT3 shown on Unistand34)

1	-	SteamChef™ GAS Steamer (22CGT3 shown)	1
2*	2501018	Foot, 4.00" Adjustable, Less Flange	4
3	KE603640	Adapter, Stand	4
4	111013	Washer, Fender	4
5	23153	Washer, Lock	4
6	111012	Screw, Hex Head, ½ -13	4
7	111765	Unistand34	1
Item No.	Part No.	Description	Qty.

This Page for Internal Record Only, Not for Printing

*Supplied-with or Part-of SteamChef™ Steamer

Cleveland Range, LLC

18301 St. Clair St, Cleveland, Ohio 44110

Drawing No. 260AZE

Revision Index Page

LET	REVISION HISTORY	DATE	BY
A	PRODUCTION RELEASE PER EO #C-6884R1	11-16-05	JSB
B	REVISED TO INCLUDE 22CGT3&6 INSTALLATION PER EO#C-7004	03-03-06	ERB
C	REPLACED P/N 19129 WITH P/N 19134 PER EO # C-7107 R1	06-15-06	ERB
D	REVISED TO INCLUDE 22CCT6 (STEAMCHEF 6) PER ECO-002000	09-11-19	FG
E	REVISED TO UPDATE FOOT & ADAPTER FOR 22CGT3/3.1/6/6.1 PER ECO-002619	01-22-24	ST