

MODULAR BASE WITH KETTLE(S)

24 KW ELECTRIC STEAM GENERATOR,
ONE OR TWO 6 GALLON KETTLE(S),
CABINET BASE: 24" (600MM) OR 36" (900MM) WIDE

Project _____
Item _____
Quantity _____
FCSI Section 11400 _____
Approved _____
Date _____

Models

- 24-EM-K6-24
- 36-EM-K66-24



Standard Features

- Factory assembled Kettle/Steam Generator Base combination with one or two, 6 gallon kettles with 24 KW Electric Steam Generator
- Solid State steam generator Water Level Controls
- Low Water Safety Cut-off
- Pressure Limit Controls with 15 psi Safety Valve
- Type 430 Stainless Steel exterior enclosure, and table top (with Drain Trough which has 1.50" diameter male drain), #4 exterior finish
- Type 304 Stainless kettle(s), #4 exterior finish
- Separate Start/Rest Illuminated Switch Controls, plus Pressure Gauge
- Major components serviceable from the front of the unit
- 6 gallon kettle(s) are 2/3 Steam Jacket rating, and include Lift-off Covers
- Hot and Cold Water Faucet with Swing Spout
- Kettle(s) have 50 psi chrome plated Safety Valve(s) and Manual Tilting balanced design
- Tilt Handles can be mounted on either side
- Steam Generator empties under pressure (blowdown) automatically upon each Shut-Down. Automatic Water Refill on Start-Up
- "Clear access" Lift-Off Front Panel
- Secondary Low Water Cut-Off, factory installed (CALE)
(Required for AZ. AR. CA. CO. CT. DE. FL. GA. HI. IL. IA. KS. MD. MA. MI. MN. MT. NE. NV. NM. NC. OK. OR. PR. RI. TN. UT. VA. WA. WV., Buffalo, NY, Wash. DC)
- Standard voltage is 208volt, 60 Hz, 3 Phase, 3 Wire
- Adjustable Flanged Feet (FF-A)
- Stainless Steel Base Frame (FSS)

Short Form Specifications

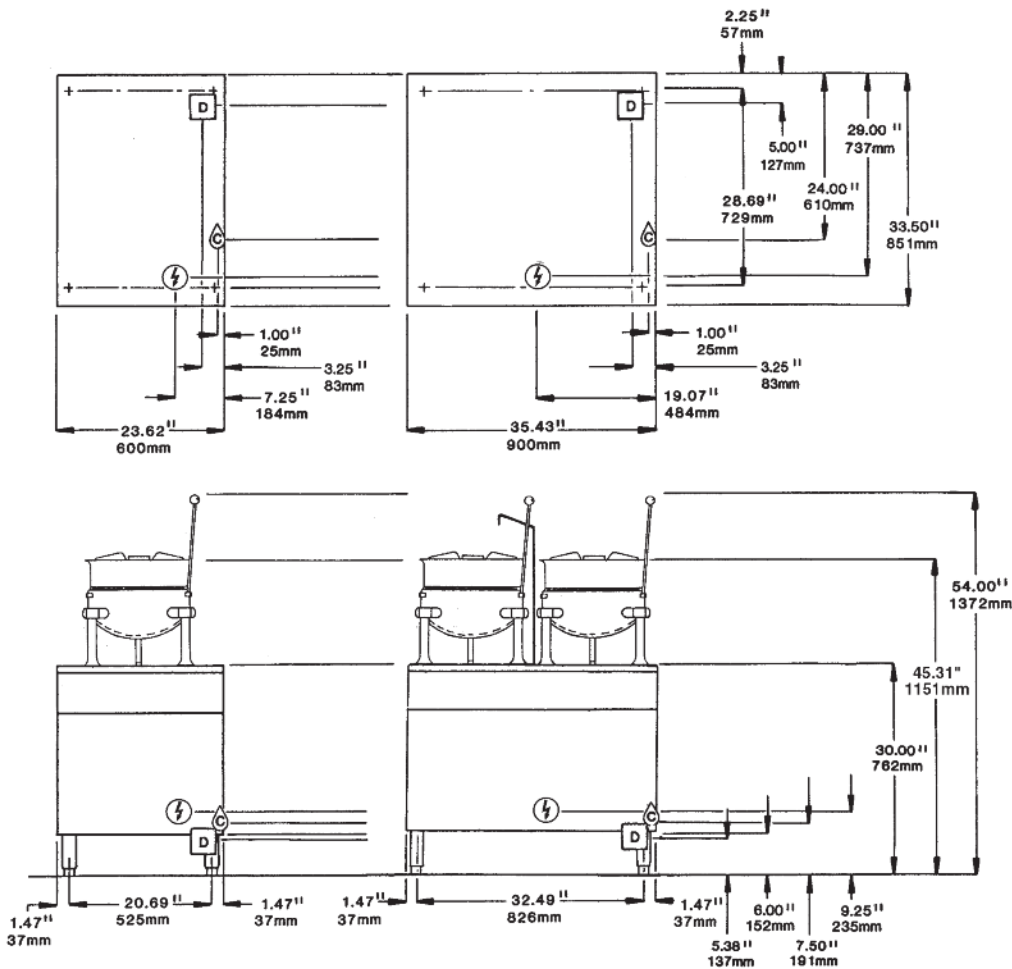
Shall be CLEVELAND, Modular Cabinet Base with one or two, 6 gallon kettle(s), Model _____-EM-K _____-24, with 24KW Electric Steam Generator; type 430 Stainless Steel exterior enclosure, table top and 4 level adjustable feet. 2/3 Steam Jacketed, type 304 Stainless Steel kettle(s) with 50 psi Steam Jacket Rating; needle type Steam Control Valve on each kettle. Console mounted Controls, Pressure Gauge and Illuminated "Start/Reset" Control Switches. Solid State Water Level Steam Generator Controls. Steam Generator drains under pressure (blowdown) after each Shut-Down with Automatic Water Refill on Start-Up. 15 psi Safety Valve.

Options & Accessories

- Power Take-Off Kit (EPTO) field installed kit
- Voltages other than standard
- Type 316 Stainless Steel kettle interior for high acid food products (316)
- Food Strainers (FS)
- Boiler Descaling Pump Kit (107142)

CAPACITIES	
(in 4 oz. servings)	
(Other sizes may be calculated.)	
6 gallon / 23 liters 160 per kettle

NEW WATER QUALITY REQUIREMENTS (Boilers, Generators)	
TDS:	50-125 ppm
Hardness:	50 - 125 mm (3 - 6 gpg)
pH value:	7.0 - 8.5
CL (Chloride):	max 25 ppm
Cl2 (free chlorine):	max 0.1 ppm
SiO42 (sulfate):	max 150 ppm
Fe (iron):	max 0.1 ppm
SiO2 (silica):	max 13 ppm
NH2Cl:	max 0.1 ppm (mono-chloramine)
Total Alkalinity:	50 - 100 ppm
Water Pressure:	35 - 80 PSI
Temperature:	max 104°F



ELECTRIC ⚡				WATER 💧		1 1/2" IPS common drain. Do not connect other units to this drain. The Floor Drain must be located outside the confines of the equipment. Do not use PVC pipe for drain.	Right - 3", Left - 3", Rear - 3" (12" CLEARANCE) adj. adjoining wall or equipment is over 30" high for service access) Contact factory for variances to clearances.																												
<table border="1"> <tr> <th colspan="5">3 PHASE</th> </tr> <tr> <td></td> <td>KW</td> <td>24</td> <td>36</td> <td>48</td> </tr> <tr> <td>208V</td> <td></td> <td>57</td> <td>100</td> <td>119</td> </tr> <tr> <td>220V</td> <td>AMPS</td> <td>63</td> <td>80</td> <td>127</td> </tr> <tr> <td>240V</td> <td>PER LINE</td> <td>52</td> <td>87</td> <td>116</td> </tr> <tr> <td>480V</td> <td></td> <td>26</td> <td>44</td> <td>58</td> </tr> </table> For power supply, use copper wire only.				3 PHASE						KW	24	36	48	208V		57	100	119	220V	AMPS	63	80	127	240V	PER LINE	52	87	116	480V		26	44	58	35 psi minimum 60 psi maximum ⚡ 1/4" NPT hot and cold water for kettles 💧 1/4" NPT cold water	
3 PHASE																																			
	KW	24	36	48																															
208V		57	100	119																															
220V	AMPS	63	80	127																															
240V	PER LINE	52	87	116																															
480V		26	44	58																															

NOTES:

Cleveland Range reserves right of design improvement or modification, as warranted.
 Many regional, state and local codes exist and it is the responsibility of the owner and installer to comply with the codes.
 Cleveland Range equipment is built to comply with applicable standards for manufacturers. Included among those approval agencies are U.L./NSF#4 and CSA (AGA, CGA).

(NOT TO SCALE)