

Project _____
 Item _____
 Quantity _____
 FCSI Section 11400 _____
 Approved _____
 Date _____

MODULAR BASE WITH KETTLE(S)

DIRECT STEAM, ONE OR TWO, 6 GALLON KETTLE(S),
 CABINET BASE: 24" (600MM) OR 36" (900MM) WIDE

Models

- 24-DM-K6 • 36-DM-K66



Standard Features

- Factory assembled Kettle/Modular Base combination with one or two, 6 gallon kettle(s) for direct connection to steam from another source
- Steam Control Kit: includes needle type Steam Control Valve(s), Steam Trap, Condensate Strainer, Check Valve, nipples and fittings, factory assembled and mounted on kettle(s)
- Type 430 Stainless Steel exterior enclosure, kettle(s) and table top (with drain Trough which has 1.50" diameter male drain); #4 exterior finish
- 6 gallon kettle(s) are 2/3 Steam Jacketed and include Lift-Off Cover(s)
- Hot and Cold Water Faucet with Swing Spout
- Kettle(s) have 50 psi Steam Jacket Rating, 50 psi chrome plated Safety Valve(s) and Manual Tilting, balanced design
- Tilt Handles can be mounted on either side of kettle(s)
- Adjustable Flanged Feet (FF-A)
- Stainless Steel Base Frame (FSS)

Options & Accessories

- Type 316 Stainless Steel Kettle interior(s) for high acid food products (316)
- Food Strainers (FS)
- Pressure Reducing Valve for incoming supply over 50 psi (PRV)

Short Form Specifications

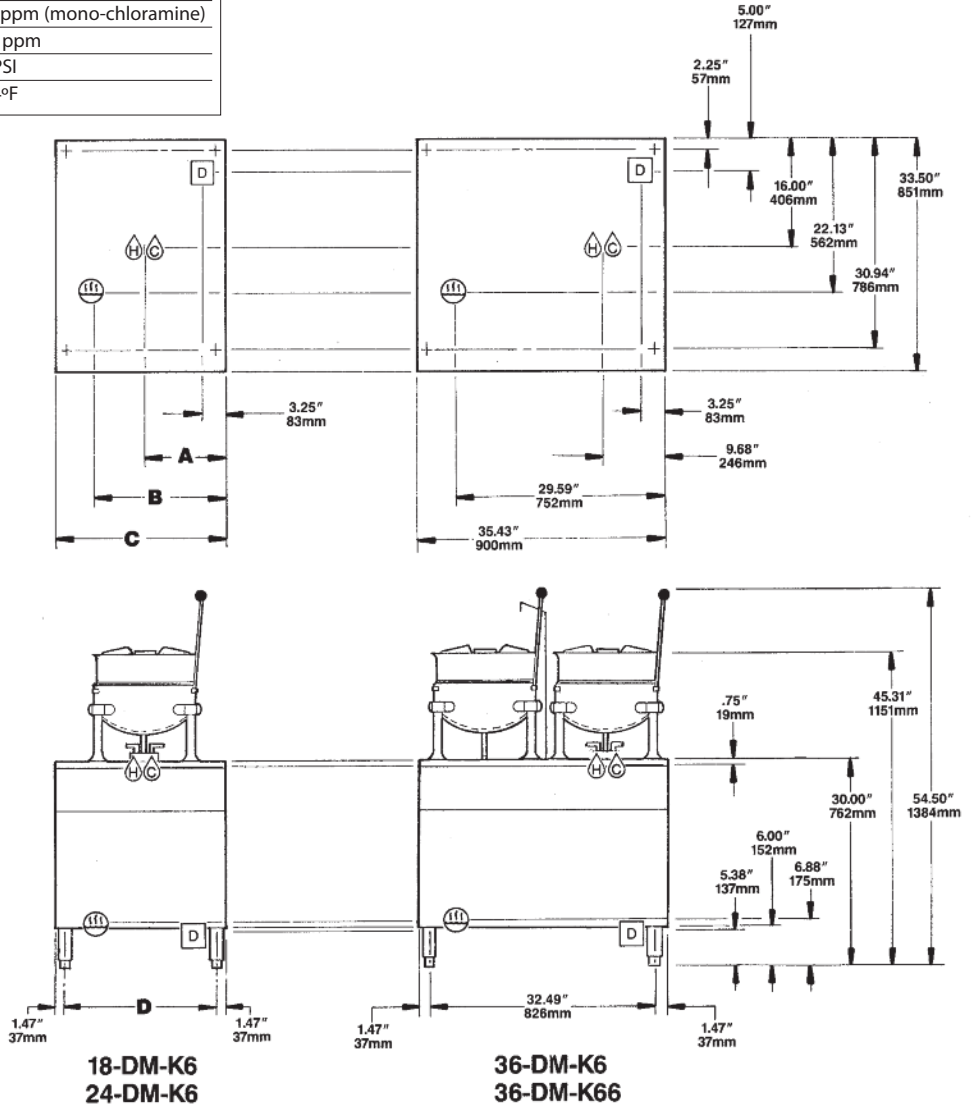
Shall be CLEVELAND, Direct Steam, Modular Cabinet Base with one or two, 6 gallon kettle(s), Model ____ DM-K ____ Type 430 Stainless Steel exterior enclosure, Table Top and 4 Level adjustable Feet. 2/3 Steam Jacketed, type 304 Stainless Steel kettle(s) with 50 psi Steam Jacket Rating. Needle type Steam Control Valve on each kettle. To operate connect directly to a steam source supplying from 5 to 10 psi steam. Steam Condensate Trap and Strainer, factory assembled and installed. Includes Hot and Cold Water Faucet with Spring Spout and Lift-Off Kettle Cover(s).

**NEW WATER QUALITY REQUIREMENTS
(Boilers, Generators)**

TDS:	50-125 ppm
Hardness:	50 - 125 mm (3 - 6 gpg)
pH value:	7.0 - 8.5
CL (Chloride):	max 25 ppm
Cl2 (free chlorine):	max 0.1 ppm
SiO42 (sulfate):	max 150 ppm
Fe (iron):	max 0.1 ppm
SiO2 (silica):	max 13 ppm
NH2Cl:	max 0.1 ppm (mono-chloramine)
Total Alkalinity:	50 - 100 ppm
Water Pressure	35 - 80 PSI
Temperature:	max 104°F

CAPACITIES

(in 4 oz. servings)
(Other sizes may be calculated.)
6 gallon / 23 liters 160 per kettle



DIRECT STEAM	WATER	DRAINAGE	CLEARANCE
Steam Supply: • 1/2" IPS minimum line. • Operating Pressure 5 to 50 psi with 55 psi Safety Valve.	35 psi minimum 60 psi maximum 1/4" NPT hot and cold water for kettles.	1 1/2" IPS common drain. Do not connect other units to this drain. Do not use PVC pipe for drain.	Right - 3', Left - 3', Rear - 3' (12" on control side if adjoining wall or equipment is over 30" high for service access) Contact factory for variances to clearances.

Model No.	A	B	C	D
18-DM-K66	IN mm	8.86 225	11.87 302	17.71 450
24-DM-K66	IN mm	11.81 300	17.78 452	23.62 600
		20.69 525		

NOTES:

Cleveland Range reserves right of design improvement or modification, as warranted.
Many regional, state and local codes exist and it is the responsibility of the owner and installer to comply with the codes.
Cleveland Range equipment is built to comply with applicable standards for manufacturers. Included among those approval agencies are U.L./NSF#4 and CSA (AGA, CGA).

(NOT TO SCALE)