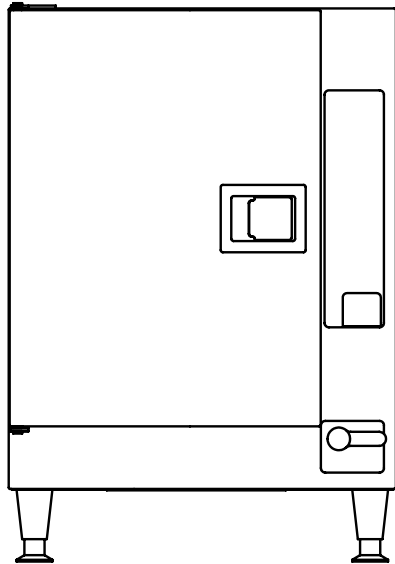
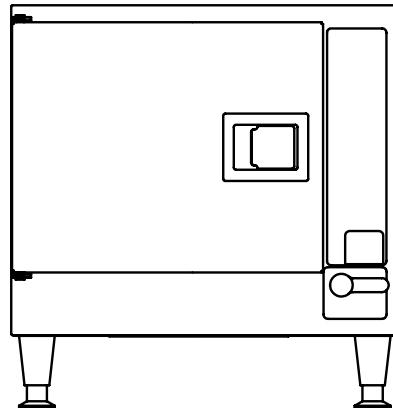


Parts Manual



PATENT PENDING



Energy Star SteamChef Models 22CET3.1

1333 East 179th Street
Cleveland, Ohio 44110

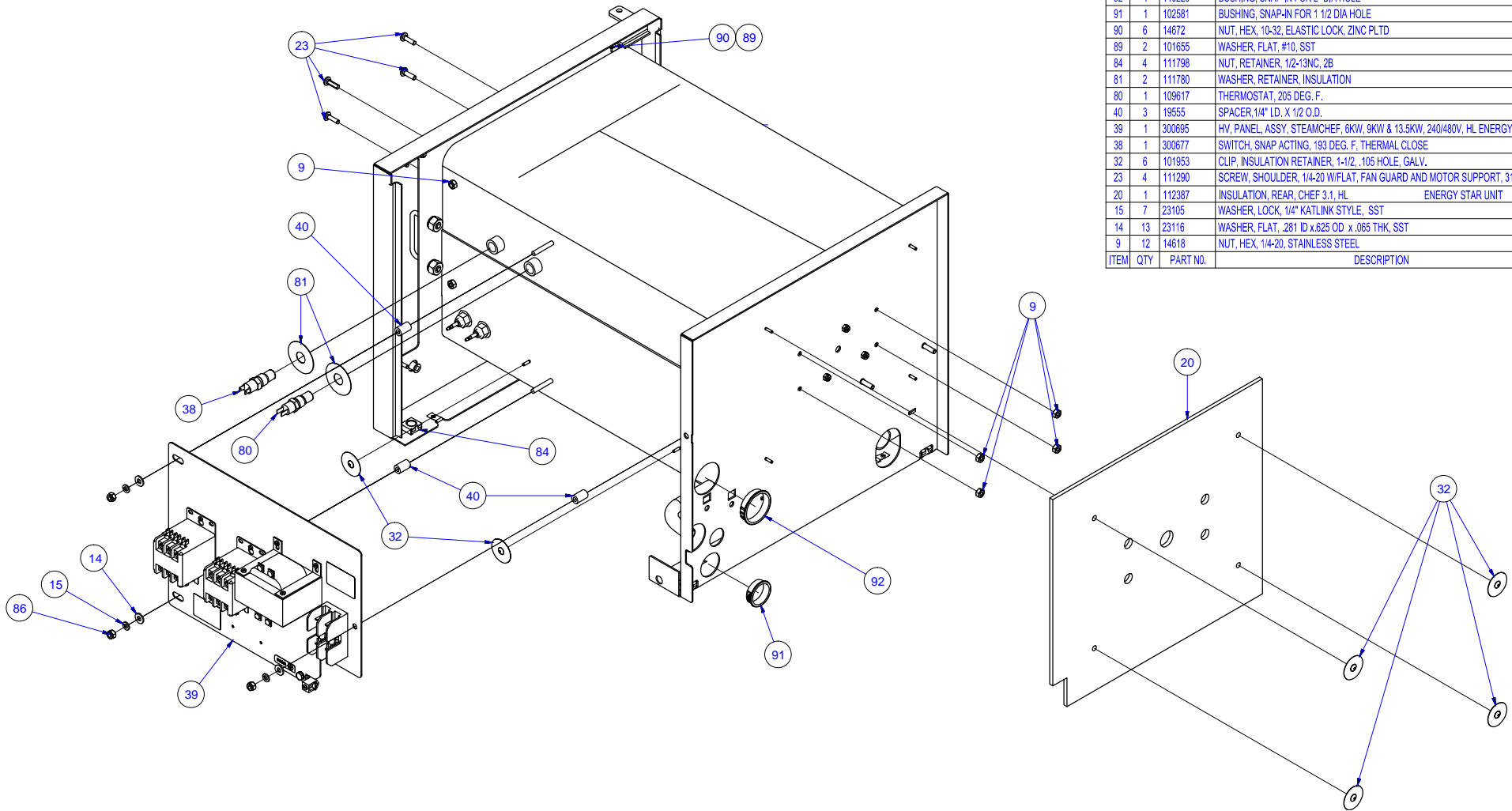
Phone: (216) 481 - 4900
1-800-338-2204

Fax: (216) 481 - 3782
www.clevelandrange.com



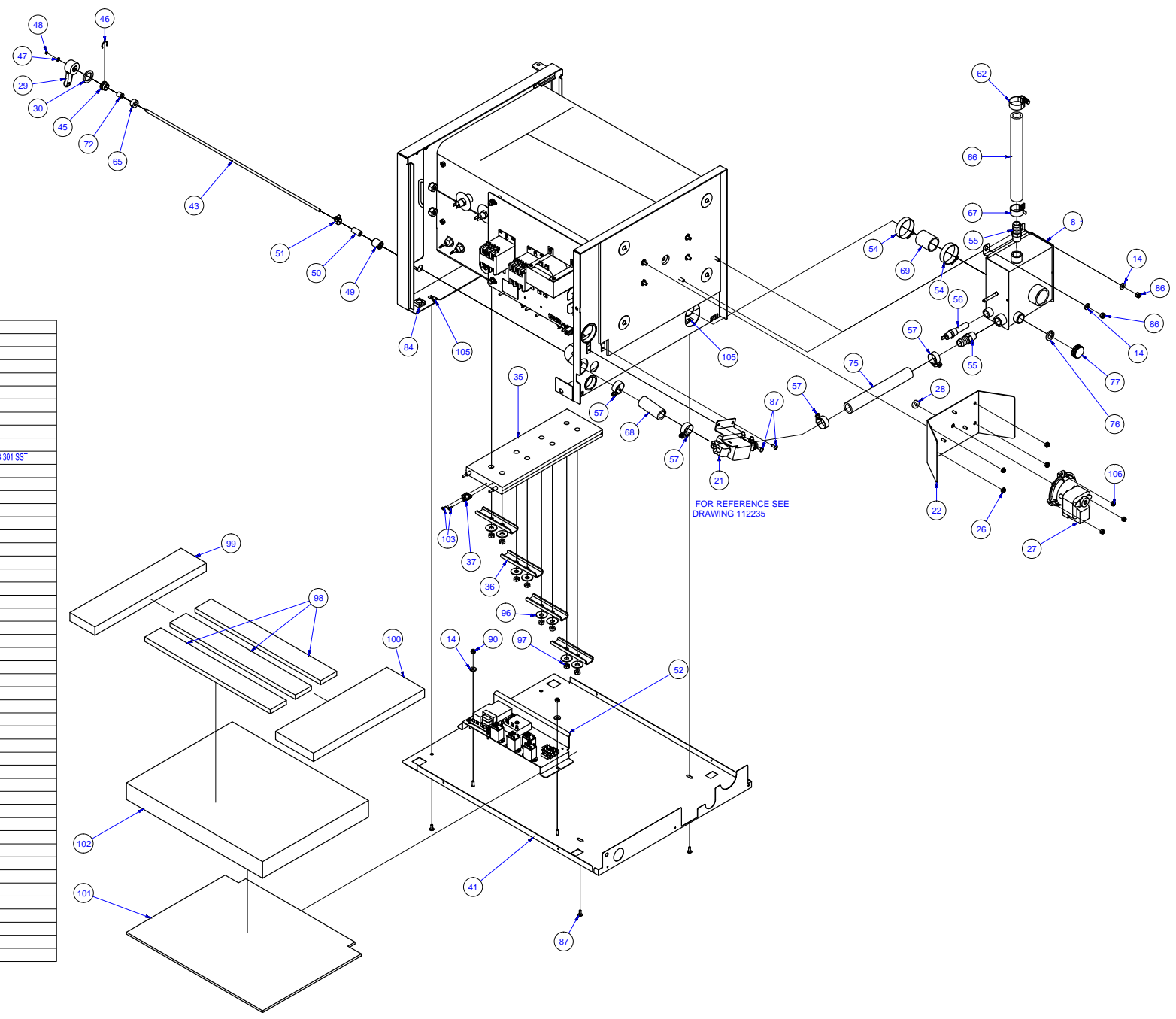
Cleveland

Part No. 22CET3.1Parts



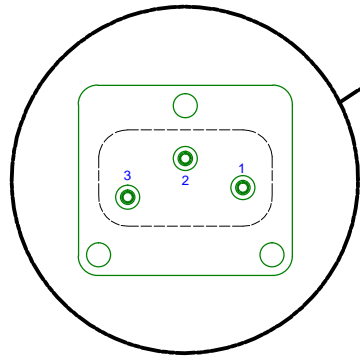
92	1	110229	BUSHING, SNAP-IN FOR 2" DIA HOLE
91	1	102581	BUSHING, SNAP-IN FOR 1 1/2 DIA HOLE
90	6	14672	NUT, HEX, 10-32, ELASTIC LOCK, ZINC PLTD
89	2	101655	WASHER, FLAT, #10, SST
84	4	111798	NUT, RETAINER, 1/2-13NC, 2B
81	2	111780	WASHER, RETAINER, INSULATION
80	1	109617	THERMOSTAT, 205 DEG. F.
40	3	19555	SPACER, 1/4" LD. X 1/2 O.D.
39	1	300695	HV, PANEL, ASSY, STEAMCHEF, 6KW, 9KW & 13.5KW, 240/480V, HL ENERGY STAR
38	1	300677	SWITCH, SNAP ACTING, 193 DEG. F. THERMAL CLOSE
32	6	101953	CLIP, INSULATION RETAINER, 1-1/2, .105 HOLE, GALV.
23	4	111290	SCREW, SHOULDER, 1/4-20 W/FLAT, FAN GUARD AND MOTOR SUPPORT, 316L SST
20	1	112387	INSULATION, REAR, CHEF 3.1, HL ENERGY STAR UNIT
15	7	23105	WASHER, LOCK, 1/4" KATLINK STYLE, SST
14	13	23116	WASHER, FLAT, .281 ID x.625 OD x .065 THK, SST
9	12	14618	NUT, HEX, 1/4-20, STAINLESS STEEL
ITEM	QTY	PART NO.	DESCRIPTION

BEFORE 5-2010

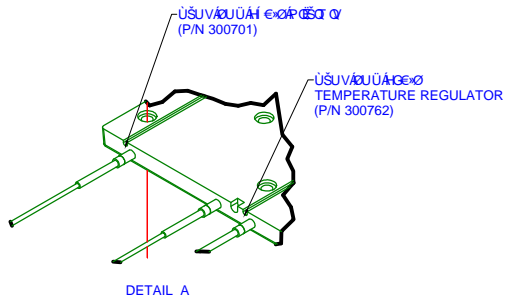


ITEM	QTY	PART NO.	DESCRIPTION
106	3	14692	NUT, HEX, 10-24, ELASTIC LOCK, ZINC PLTD, FASTENER
105	4	106699	NUT, SIFPON, #10-24, TIN, C17205-1024
104	1	05253	ELBOW, STREET, 90°, 1/2 NPT, BRASS
103	6	111484	SCREW, 6-32 X 3/8", PHILLIPS HEAD
102	1	110805	INSULATION, BOTTOM PAN, STEAMCHEF
101	1	108136	INSULATION, BOTTOM PAN, STEAMCUB, H.L.
100	1	110680	INSULATION, FIBERGLASS, BOTTOM REAR, STEAMCHEF 3
99	1	110679	INSULATION, FIBERGLASS, BOTTOM FRONT, STEAMCHEF 3
98	3	110677	INSULATION, BOTTOM, STRIPS, STEAMCHEF 3
97	24	112481	NUT, HEX, 1/4-20 X 7/16 BR
96	24	112480	WASHER, BELLEVILLE, 1/4", 0.258 ID X 0.813 OD X 0.062 THK, TYP 301 SST
90	6	14672	NUT, HEX, 10-32, ELASTIC LOCK, ZINC PLTD
87	10	101231	SCREW, 10-24 X 0.500 SST, PHILLIPS TRUSS HEAD
86	5	14665	NUT, HEX, 1/4-20 LOCK, SST (NYLON INSERT)
84	4	111798	NUT, RETAINER, 1/2-13NC, 2B
77	1	108031	CAP, HOSE NUT 3/4" HOSE THD.
76	1	108034	WASHER 3/4 GHT HOSE
75	1	1060930850	HOSE, SILICONE 3/4" ID X 8.500 LG.
72	1	112244	BUSHING, INSERT
68	1	1060930275	HOSE, SILICONE 3/4" ID X 2.750 LG.
67	1	107312	CLAMP, HOSE, 1 1/8" OD, METAL TENSION BAND
66	1	08511000	HOSE, WHITE EPDM, 3/4" ID X 10.000" LG
62	1	03204	CLAMP, HOSE, WORM DRIVE 0.812 X 1.50 DIA
57	4	03207	HOSE, CLAMP LINED, WORM DRIVE, MAX OD 1.125
56	1	106288	SWITCH, THERMOSTAT, 140 DEG
55	2	08241	FTG. HOSE BARB, 3/4" X 1/2" NPT, BR.
52	1	300702	PANEL, COMPONENT ASSY, CHEF, HL ENERGY STAR
51	5	106526	CLAMP, HOSE, WORM DRIVE, 3/8 TO 5/8 X 3/16W, SST
50	1	1123603100	TUBE, NEOPRENE, 3/8" ID X 1 LG
49	1	110713	SOCKET, 1/4" DRIVE, 9/16" 12 POINT
48	1	110745	NUT, HEX, 8-32 SMALL PATTERN, 1/4", SST
47	1	101336	WASHER, FLAT, #8, SST
46	1	102187	RING, RETAINING, .688 CRESCENT, J STEAMER
45	1	112243	BUSHING, SUPPORT, GEMINI
43	1	112320	SHAFT, HANDLE TO VALVE, STEAMCHEF 3.1/6.1
41	1	112001	WELDMENT, BASE PAN, STEAMCHEF 3.1/6.1, HL
37	3	109152	SWITCH SNAP
36	12	109134	CHANNEL, HEATER MOUNTING STEAMCUB
35	3	300196	HEATER, CAST, 208V, 3000W
30	1	110694	SPACER, CONTROL LEVER STEAMCHEF 3
29	1	110652	LEVER, CONTROL
28	1	111272	SEAL, 1/4" ID X 3/4" OD X 1/4" THRU
27	1	110683	MOTOR, BLOWER STEAMCHEF 3
26	4	018173	NUT, HEX 1/4-20 THIN LOCK, ZINC PLTD, STEEL
22	1	112690	ASSY, PLATE, MOTOR MOUNTING, CHEF 3.1/6.1, HLHR
21	1	112235	ASSEMBLY, DRAIN/POWER SWITCH, H.L., STEAMCHEF 3.1/6.1
14	13	23116	WASHER, FLAT, .281 ID X .625 OD X .085 THK, SST
8	1	112684	WELDMENT, CONDENSER BOX, HL, X2

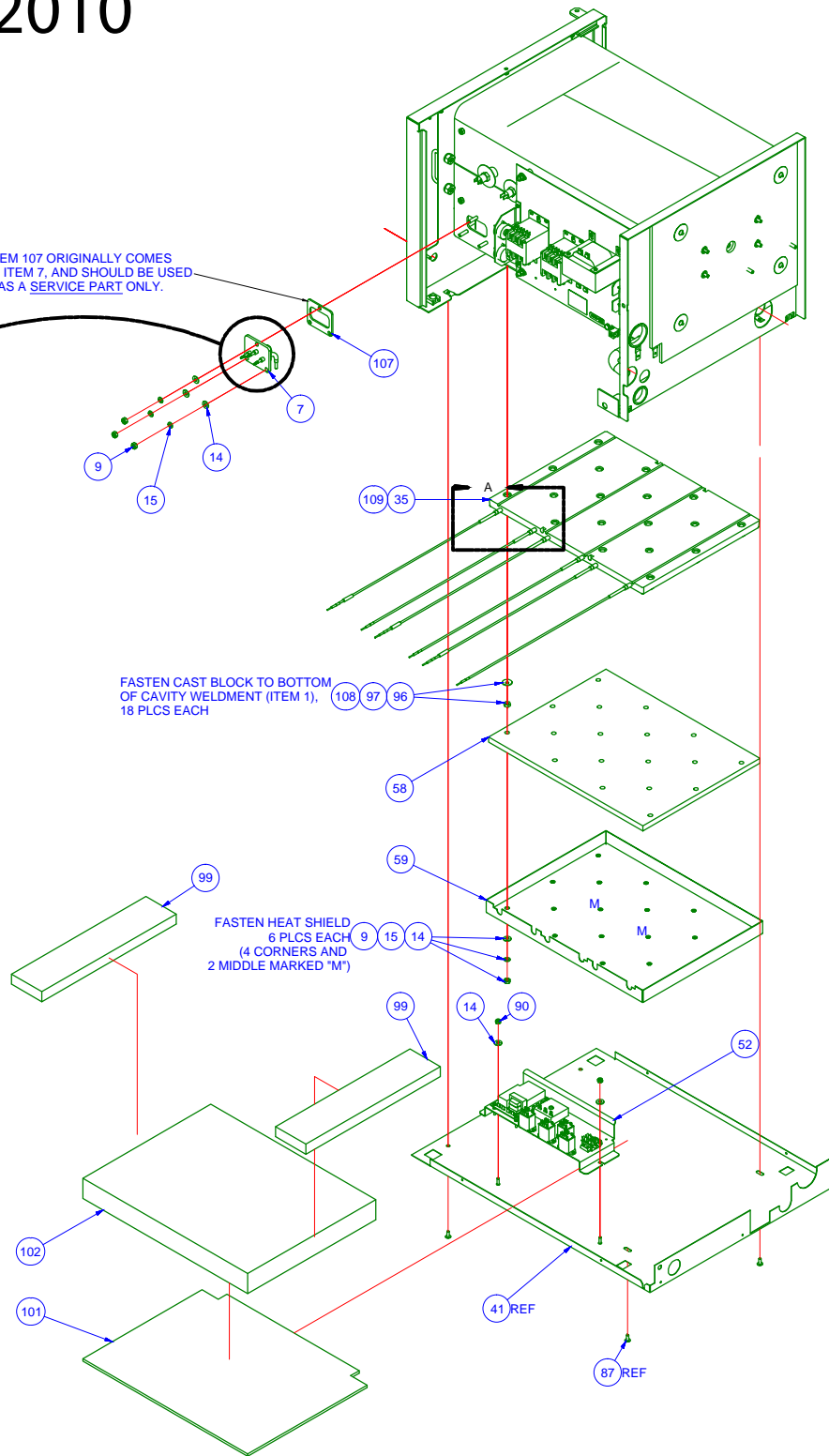
AFTER 5-2010



PROBE NUMBERED FOR WIRING CONNECTION.
SEE WIRING DIAGRAM.

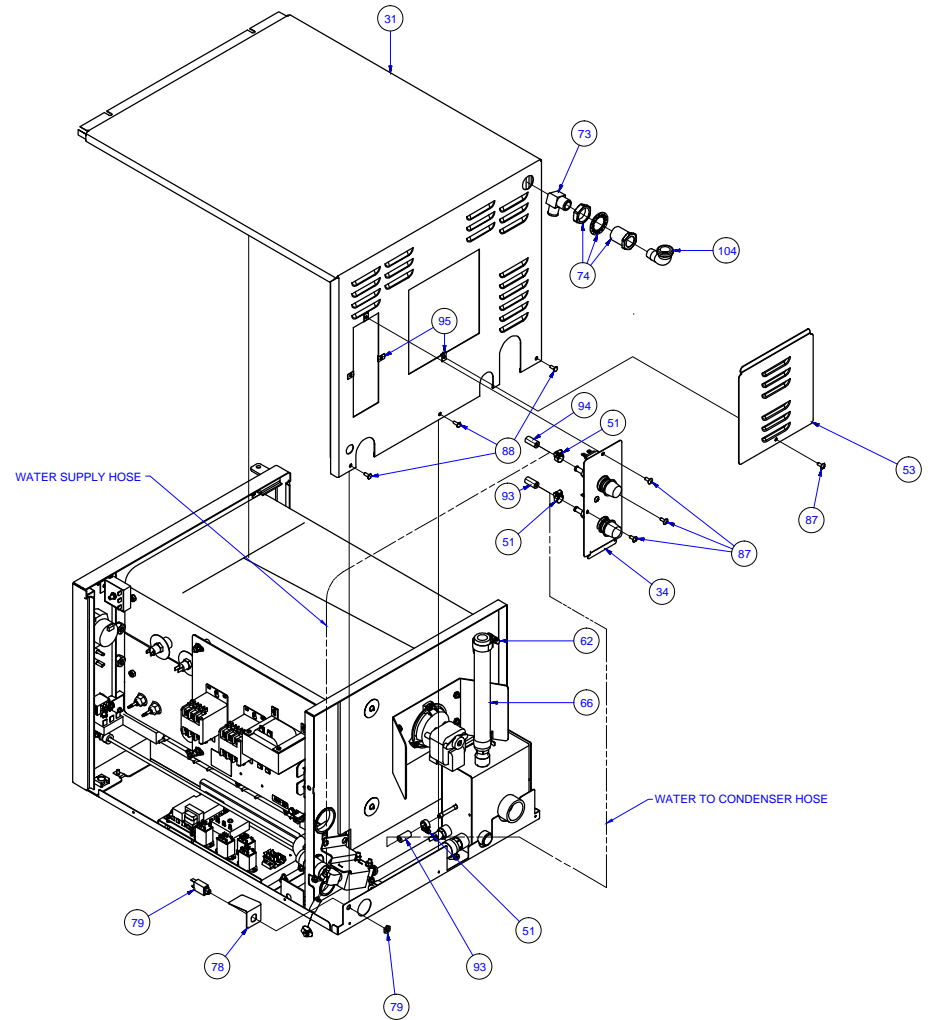
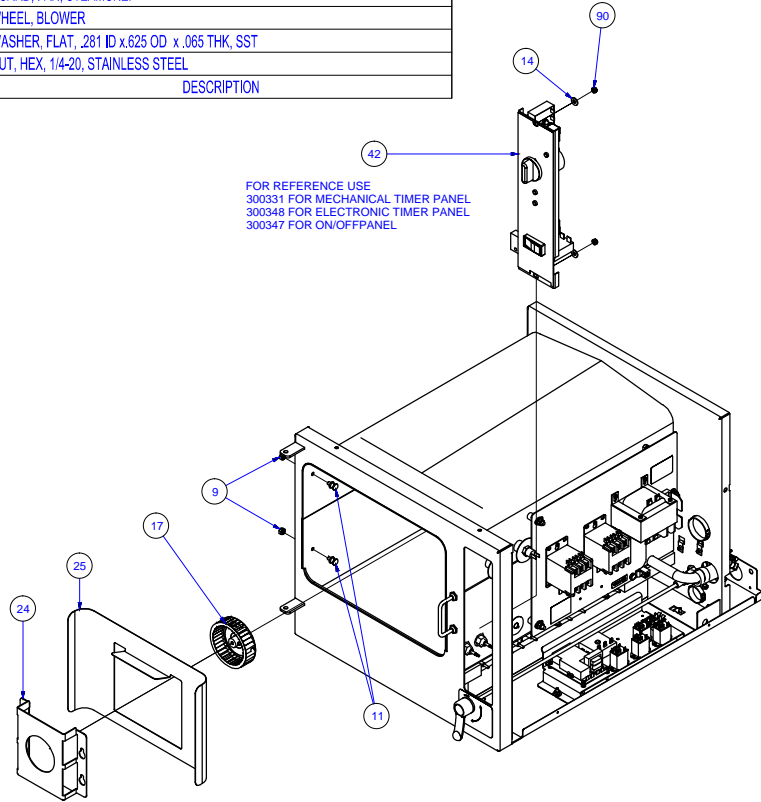


ITEM 107 ORIGINALLY COMES WITH ITEM 7, AND SHOULD BE USED AS A SERVICE PART ONLY.



ITEM	QTY	PART NO.	DESCRIPTION
109	AIR	109139	COMPOUND, HEAT TRANSFER
108	AIR	01205	ADHESIVE, LOCTITE GREEN
107	1	112517	GASKET,CHEF PROBE,1 PIECE MOLDED
102	1	110805	INSULATION, BOTTOM PAN, STEAMCHEF
101	1	109136	INSULATION, BOTTOM PAN, STEAMCUB, H.L.
97	18	112481	NUT, HEX, 1/4-20 X 7/16 BR
96	18	112480	WASHER,BELLEVILLE,1/4"SS,258 IDx.813 ODx.062 THK
90	7	14672	NUT, HEX, 10-32, ELASTIC LOCK, ZINC PLTD
59	1	112658	HEAT SHIELD, 12KW HEATER BLOCK, STEAMCHEF
58	1	113248	INSULATION BOARD, 1/2" BOT, CHEF 3.1 & 1 ELEC.
52	1	300702	PANEL, COMPONENT ASSY, CHEF, HL ENERGY STAR
41	1	112886	WELDMENT, BASE PAN, STEAMCHEF 3.1/6.1, HL
35	1	300705	BLOCK HEATER, 12KW, 220V
35	1	300761	BLOCK HEATER, 12KW, 480V
15	28	23105	WASHER, LOCK, 1/4" KATLINK STYLE, SST
14	34	23116	WASHER, FLAT, .281 ID x .625 OD x .065 THK, SST
9	33	14618	NUT, HEX, 1/4-20, STAINLESS STEEL
7	1	300688	MOLDED PROBE, 3 ELECTRODES

104	1	05253	ELBOW, STREET, 90°, 1/2 NPT, BRASS
95	4	110496	NUT, SLIPON, 10-24, PNL .025
94	1	1058501900	HOSE, 1/4" ID x 19", SILICON REINFORCED
93	1	1058501700	HOSE, NYLON REINFORCED, 1/4" ID, 17" LG
90	6	14672	NUT, HEX, 10-32, ELASTIC LOCK, ZINC PLTD
88	7	104080	SCREW, TR, PHH, 8x1/2, TYPE B, SST
87	10	101231	SCREW, 10-24 X 0.500 SST, PHILLIPS TRUSS HEAD
79	1	300255	BREAKER, CIRCUIT 1.5 AMP
78	1	108848	BRACKET, CIRCUIT BREAKER SHIELD STEAMCRAFT 3.1 & 5.1
74	1	106157	FITTING, BULKHEAD, 1/2NPT FOR 1 1/8"ID OPENING
73	1	111354	FTG, BARB, 3/4H x 1/2 MPT, 90 DEG, BRASS
66	1	085111000	HOSE, WHITE EPDM, 3/4"ID X 10.000" LG
62	1	03204	CLAMP, HOSE, WORM DRIVE 0.812 X 1.50 DIA
53	1	112737	COVER, DOOR, FAN ACCESS, CHEF 3, 6
51	5	106526	CLAMP, HOSE, WORM DRIVE, 3/8 TO 5/8x5/16W, SST
42	1	300331	PANEL ASSY, MECH. TIMER, CHEF HL
34	1	112740	ASSEMBLY, WATER SUPPLY, CHEF 3, 6
31	1	112036	SHEETING, TOP/BACK, STEAMCHEF 3.1, HL
25	1	1118682	GUARD, BACKPLATE, FAN, STEAMCHEF 3.1
24	1	1118681	GUARD, FAN, STEAMCHEF
17	1	108171	WHEEL, BLOWER
14	13	23116	WASHER, FLAT, .281 ID x.625 OD x .065 THK, SST
9	12	14618	NUT, HEX, 1/4-20, STAINLESS STEEL
ITEM	QTY	PART NO.	DESCRIPTION



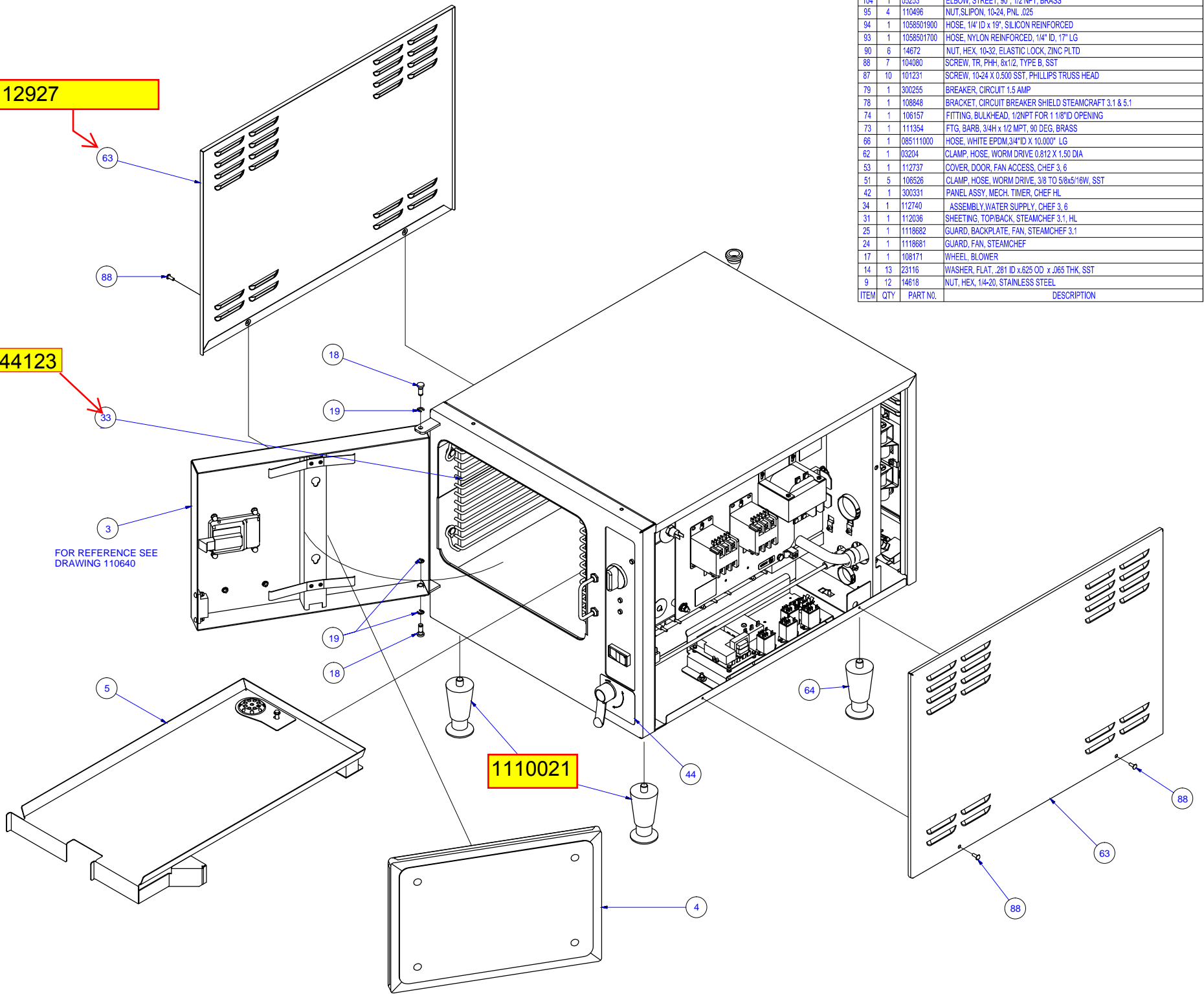
112927

44123

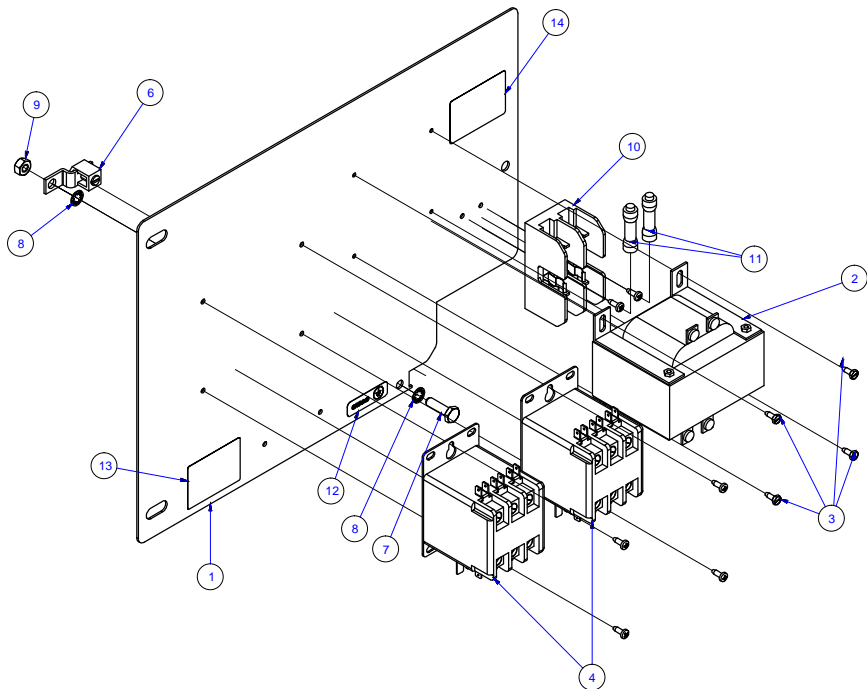
1110021

FOR REFERENCE SEE
DRAWING 110640

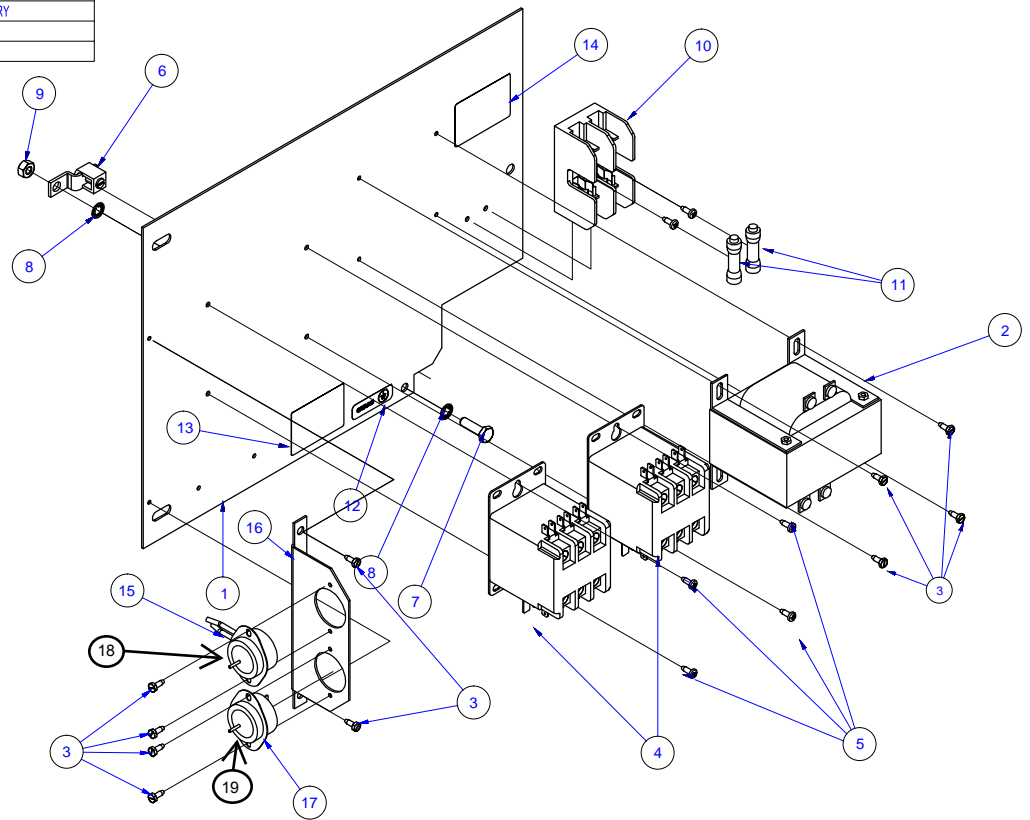
ITEM	QTY	PART NO.	DESCRIPTION
104	1	05253	ELBOW, STREET, 90°, 1/2 NPT, BRASS
95	4	110496	NUT, SLIPON, 10-24, PNL, .025
94	1	1058501900	HOSE, 1/4" ID x 19", SILICON REINFORCED
93	1	1058501700	HOSE, NYLON REINFORCED, 1/4" ID, 17" LG
90	6	14672	NUT, HEX, 10-32, ELASTIC LOCK, ZINC PLTD
88	7	104080	SCREW, TR, PHH, 8x1/2, TYPE B, SST
87	10	101231	SCREW, 10-24 X 0.500 SST, PHILLIPS TRUSS HEAD
79	1	300255	BREAKER, CIRCUIT 1.5 AMP
78	1	108848	BRACKET, CIRCUIT BREAKER SHIELD STEAMCRAFT 3.1 & 5.1
74	1	106157	FITTING, BULK-HEAD, 1/2NPT FOR 1 1/8"ID OPENING
73	1	111354	FTG, BARB, 3/4H x 1/2 MPT, 90 DEG, BRASS
66	1	085111000	HOSE, WHITE EPDM, 3/4"ID X 10.000" LG
62	1	03204	CLAMP, HOSE, WORM DRIVE 0.812 X 1.50 DIA
53	1	112737	COVER, DOOR, FAN ACCESS, CHEF 3, 6
51	5	106526	CLAMP, HOSE, WORM DRIVE, 3/8 TO 5/8x5/16W, SST
42	1	300331	PANEL ASSY, MECH. TIMER, CHEF HL
34	1	112740	ASSEMBLY WATER SUPPLY, CHEF 3, 6
31	1	112036	SHEETING, TOP/BACK, STEAMCHEF 3.1, HL
25	1	1118682	GUARD, BACKPLATE, FAN, STEAMCHEF 3.1
24	1	1118681	GUARD, FAN, STEAMCHEF
17	1	108171	WHEEL, BLOWER
14	13	23116	WASHER, FLAT, .281 ID x.625 OD x .065 THK, SST
9	12	14618	NUT, HEX, 1/4-20, STAINLESS STEEL



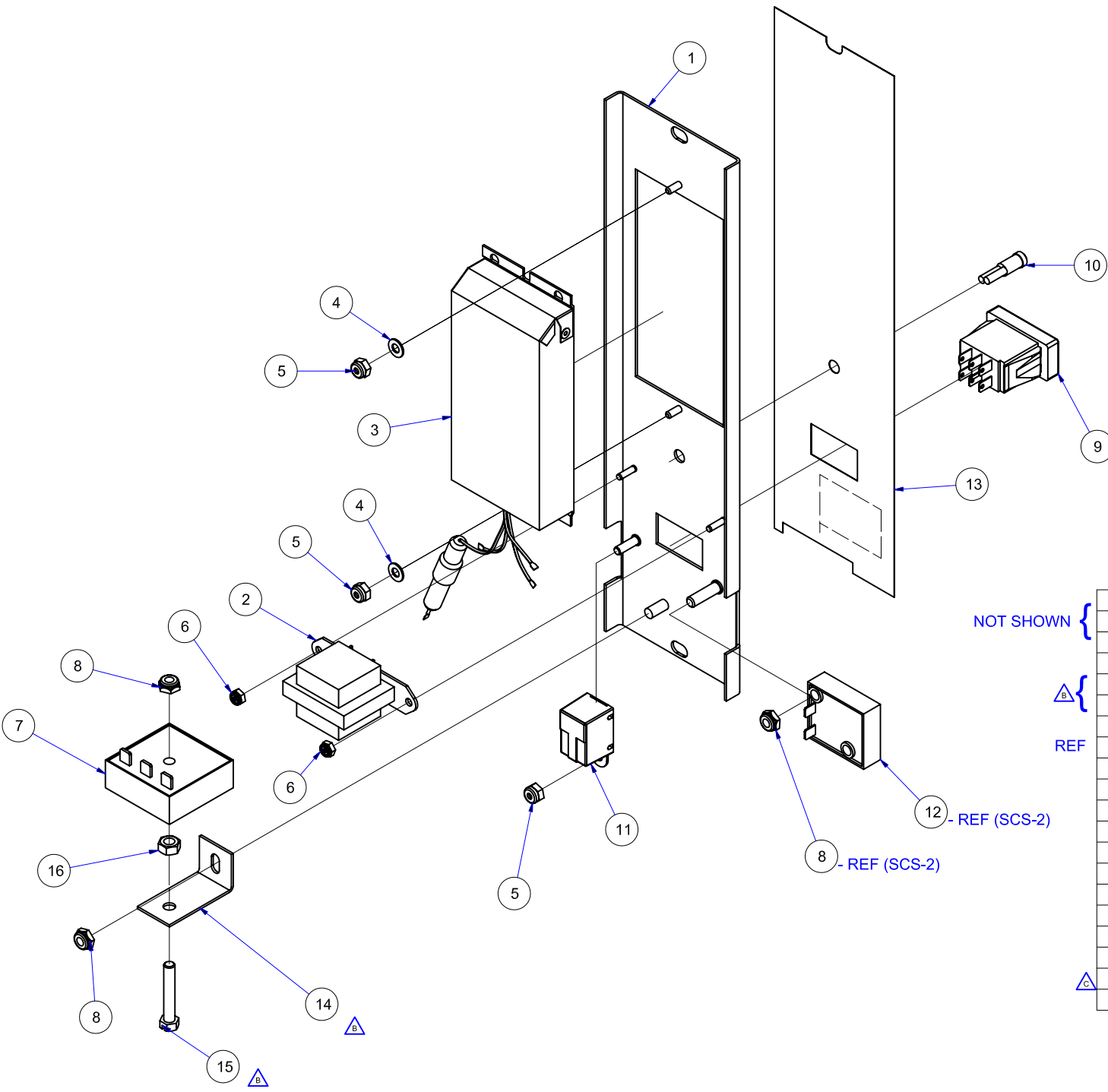
ITEM	QTY	PART NO.	DESCRIPTION
18	1	300762	
17	1	20322	TERMINAL, SLIP-ON, 0.032 X 0.250, 16-14 GA
16	1	300341	HARNESS, FUSE BLOCK, HIGH-VOLTAGE
15	1	300238	WIRE, ASSY., TRANS. JUMPER
14	1	109986	LABEL, FUSE SIZE, 5 AMPS
13	1	104349	LABEL, WARNING FIELD CONVERSION
12	1	14897	LABEL, GROUND
11	2	109380	FUSE, 3.5 AMP
10	1	109374	BLOCK, FUSE, 2 POLE, 30 AMP
9	1	14618	NUT, HEX, 1/4-20, STAINLESS STEEL
8	2	23137	WASHER, LOCK, INTERNAL TOOTH 1/4" SST
7	1	19288	SCREW, 1/4-20 X 3/4, HEX, HD, ZINC PLATED
6	1	12331	LUG, GROUND, SOLDERLESS
5	6	106126	SCREW, 8-32 X 1/2, TORX/SLT, PAN HD
4	2	03509	CONTACTOR, 50 AMP, 104-120V
3	4	106754	SCREW, 6-32 X 3/8, HEX/SLOT-WASHER HD,
2	1	300254	TRANSFORMER, 200VA, 240V/480V PRIMARY
1	1	112612	PANEL, COMPONENT, STEAMCHEF



BEFORE 5-2010



AFTER 5-2010



NOT SHOWN {

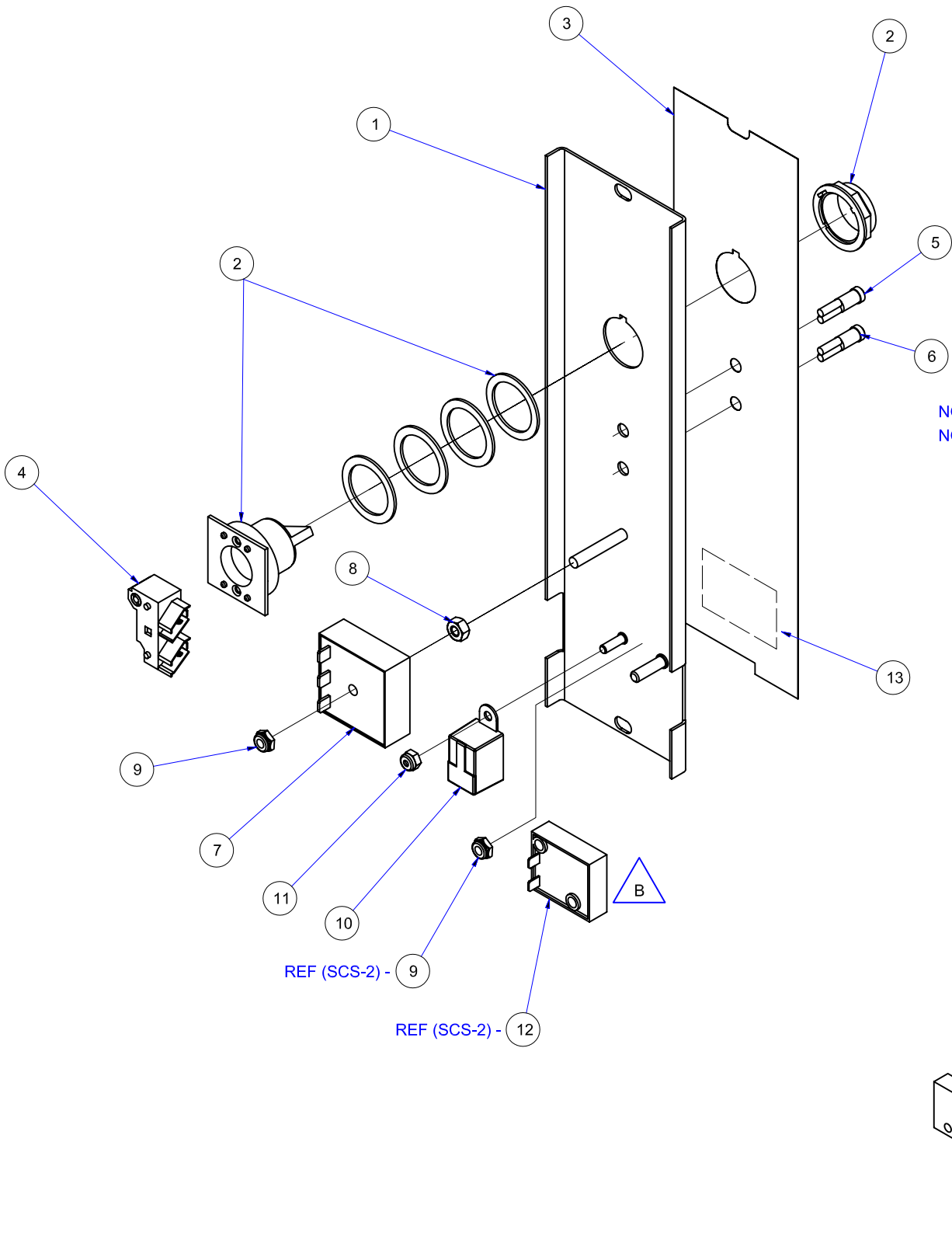
{ B }

REF

19	1	20351	TERMINAL, SLIP-ON, FULL INSUL, .032X .250 TAB
18	1	300346	HARNESS, WIRE, ELEC CONTROL PANEL
17	1	109153	LABEL, SLIP-IN MODEL NO./SERIAL NO.
16	1	14617	NUT, HEX 1/4-20 STEEL OXIDE FINISH
15	1	19175	SCREW, HEX HD, NON-SLTD
14	1	105955	BRACKET, DUAL TIMER MOUNTING
13	1	1106681	LABEL, NCC TIMER, STEAMCHEF
12	-	108880	SWITCH, DOOR STEAM CUTOFF
11	1	41350	BUZZER, ASSY, CONTINUOUS DUTY, 120VAC, 50-60HZ
10	1	12159	LIGHT, INDICATOR, NEON, RED, 7" MIN LEAD LENGTH
9	1	104224	SWITCH, ROCKER DPDT, MATTE
8	2	101873	NUT, HEX 1/4-20 THIN LOCK, ZINC PLTD, STEEL
7	1	300150	TIMER, SOLID STATE, 60 MINUTE FIXED DELAY
6	2	104223	NUT, HEX 6-32 ELASTIC LOCK
5	3	14692	NUT, HEX, 10-24, ELASTIC LOCK, ZINC PLTD, FASTENER
4	2	101655	WASHER, FLAT, #10, SST
3	1	104389	TIMER ASSEMBLY NCC
2	1	104390	TRANSFORMER ASSEMBLY
1	1	1106641	PANEL, CONTROL, WELDMENT, ETC TIMER, STEAMCHEF, HL
ITEM	QTY	PART NO.	DESCRIPTION

12 - REF (SCS-2)

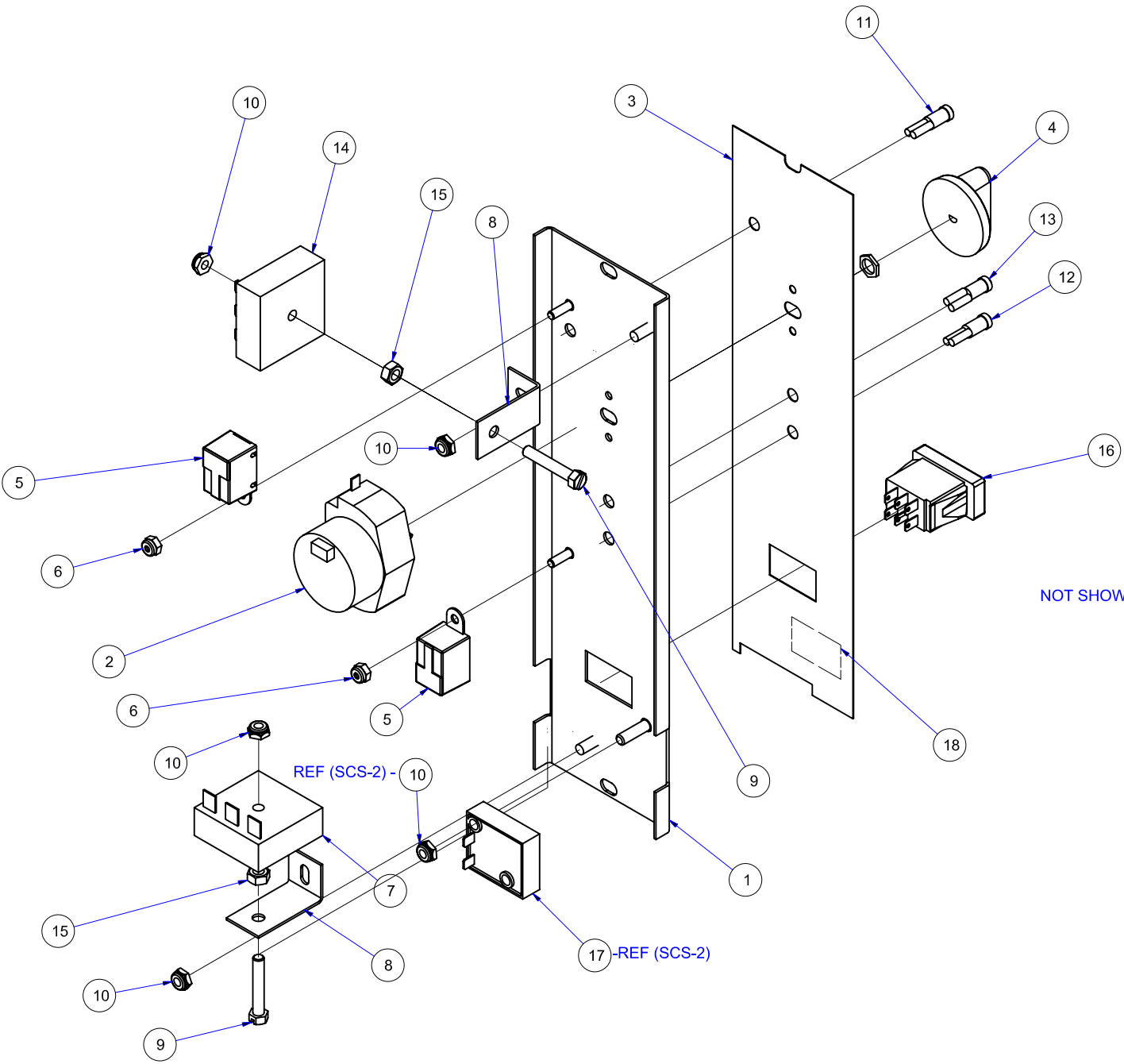
8 - REF (SCS-2)



NOT SHOWN
NOT SHOWN

REF

ITEM	QTY	PART NO.	DESCRIPTION
15	4	20351	TERMINAL SLIPON FULL-INSUL
14	1	300345	HARNESS, WIRE CTRL PANEL, ON-OFF
13	1	109153	LABEL, SLIP-IN, MODEL NO/SERIAL NO.
12	-	108880	SWITCH, DOOR STEAM CUTOFF
11	1	14692	NUT, HEX, 10-24, ELASTIC LOCK, ZINC PLTD, FASTENER
10	1	41350	BUZZER, ASSY, CONTINUOUS DUTY, 120VAC, 50-60HZ
9	1	101873	NUT, HEX 1/4-20 THIN LOCK, ZINC PLTD, STEEL
8	1	14618	NUT, HEX, 1/4-20, STAINLESS STEEL
7	1	300150	TIMER, SOLID STATE, 60 MINUTE FIXED DELAY
6	1	12159	LIGHT, INDICATOR, NEON, RED, 7" MIN LEAD LENGTH
5	1	109494	LIGHT, GREEN INDICATOR, NEON, 120V
4	1	102533	BLOCK, CONTACT
3	1	110669	LABEL, CTRL, ON/OFF, STEAMCHEF
2	1	102534	SWITCH, SELECTOR
1	1	110666	PANEL, CONTROL, WELDMENT, ON/OFF, STEAMCHEF, HL

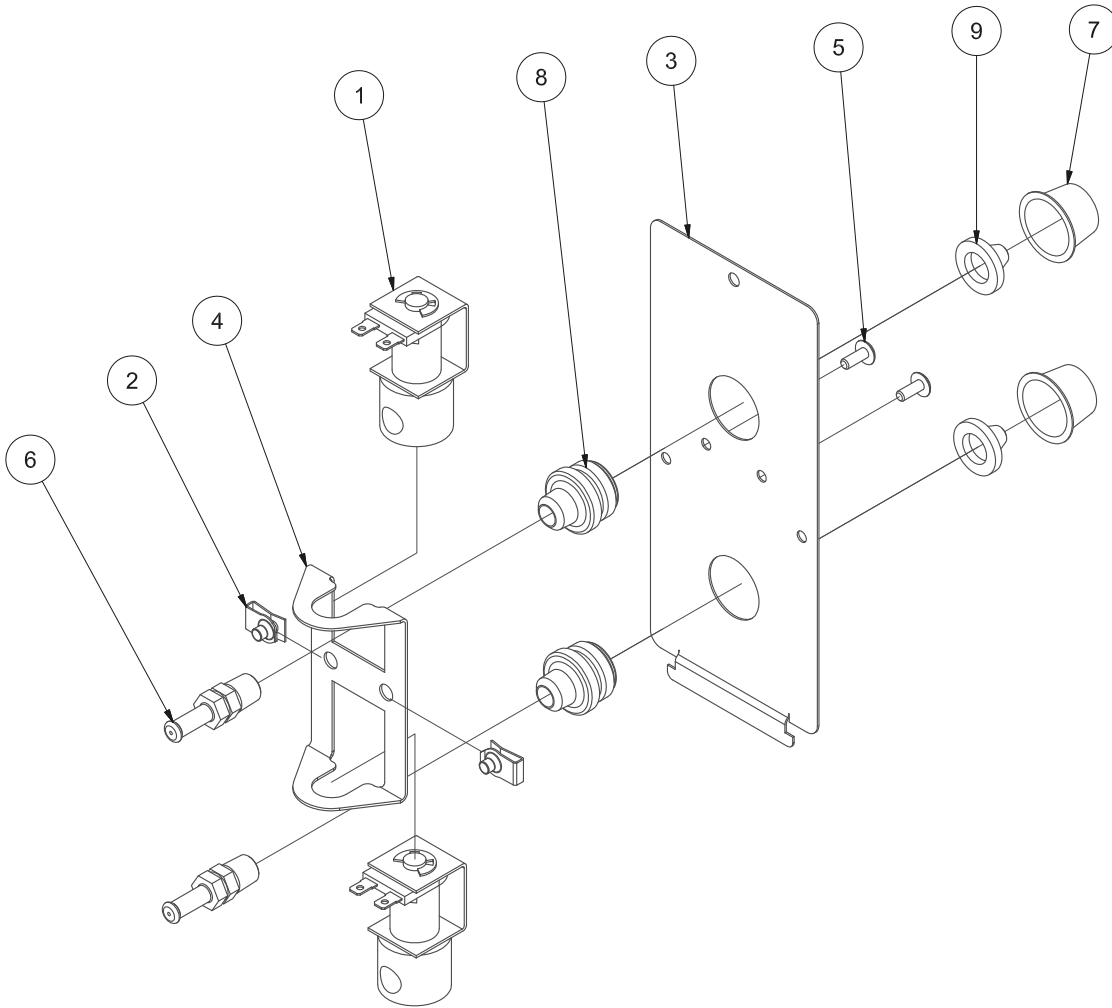


NOT SHOWN {
REF

20	8	20351	TERMINAL, SLIPON FULL-INSUL.
19	1	300333	HARNESS, MECH TIMER PANEL
18	1	109153	LABEL, SLIP-IN, MODEL NO/SERIAL NO.
17	-	108880	SWITCH, DOOR STEAM CUTOFF
16	1	104224	SWITCH, ROCKER DPDT, MATTE
15	2	14617	NUT, HEX 1/4-20 STEEL OXIDE FINISH
14	1	300150	TIMER, SOLID STATE, 60 MINUTE FIXED DELAY
13	1	109494	LIGHT, GREEN INDICATOR, NEON, 120V
12	1	12159	LIGHT, INDICATOR, NEON, RED, 7" MIN LEAD LENGTH
11	1	109602	LIGHT, AMBER INDICATOR, NEON, 120V, 7" MIN LEAD LENGTH
10	4	101873	NUT, HEX 1/4-20 THIN LOCK, ZINC PLTD, STEEL
9	2	19175	SCREW, HEX HD, NON-SLTD
8	2	105955	BRACKET, DUAL TIMER MOUNTING
7	1	20477	TIMER, SOLID STATE, 3 SEC DELAY ON BREAK
6	2	14692	NUT, HEX, 10-24, ELASTIC LOCK, ZINC PLTD, FASTENER
5	2	41350	BUZZER, ASSY, CONTINUOUS DUTY, 120VAC, 50-60HZ
4	1	110661	KNOB, EAGLE TIMER
3	1	110667	LABEL, CTRL, MECH., STMCHEF
2	1	110198	TIMER, MOTOR DRIVEN, 60 MIN. 115V 60HZ
1	1	111451	PANEL, CONTROL, WELDMENT, MECH. TIMER, STEAMCHEF, HL
ITEM	QTY	PART NO.	DESCRIPTION

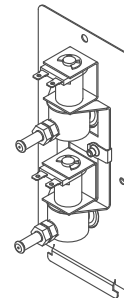
Complete Assembly 112740

Before S/N 1206 2300 01024



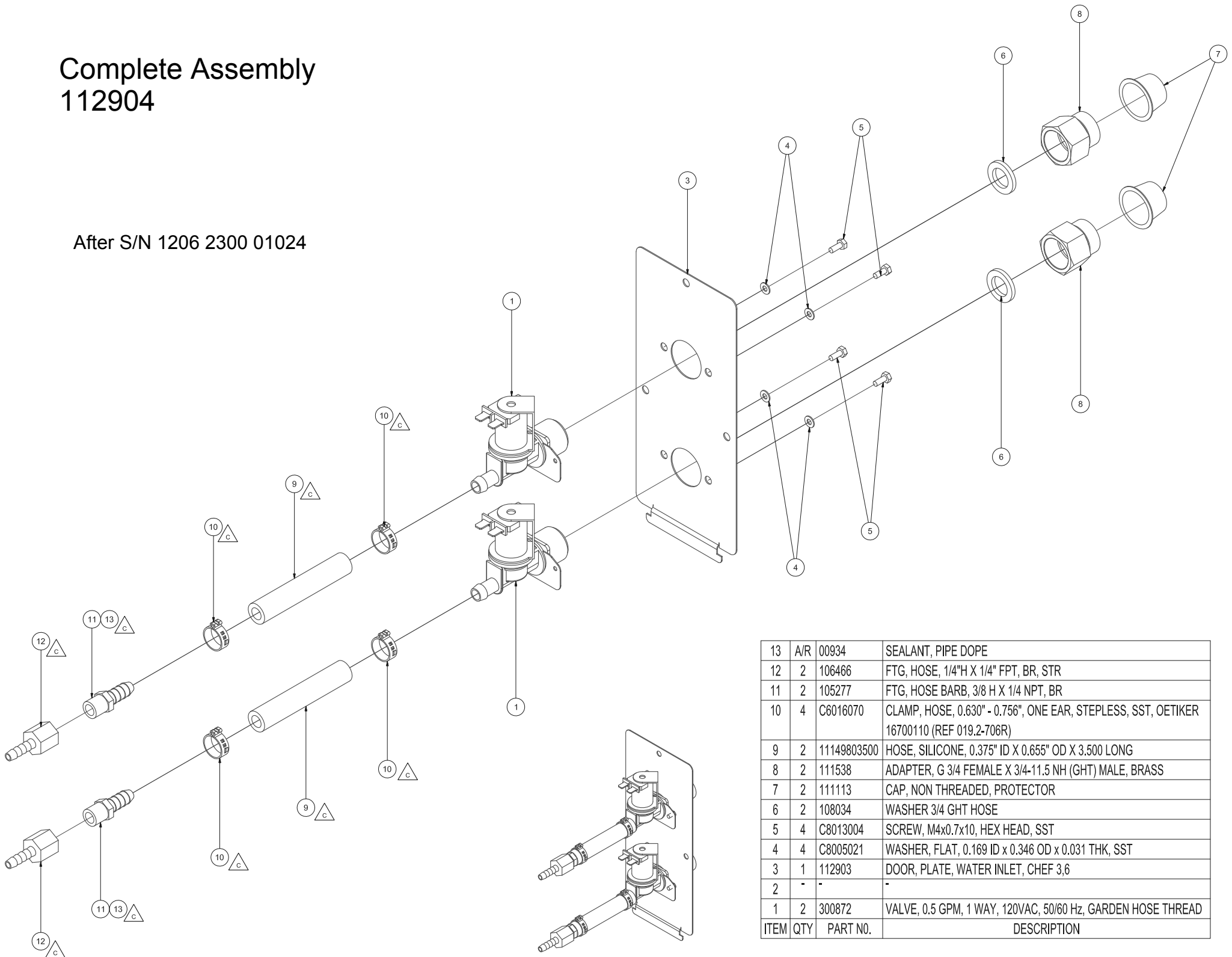
NOT SHOWN

14	A/R	00934	SEALANT, PIPE DOPE
13	1	1058501900	HOSE, 1/4"ID,19.00" LG, SILICONE REINFORCED
12	1	106526	CLAMP, WORM DRV., 1/4-5/8, 5/16 WIDE
11	3	1073121	CLAMP, HOSE, 1/4"ID, METAL TENSION BAND
10	1	1058501100	HOSE, 1/4" ID, 11.00" LG, SILICONE, REINFORCED
9	2	110987	STRAINER, FILTER WASHER, GARDEN HOSE INLET
8	2	110921	FITTING, 1/4-18 NPTF X 3/4-11 NH
7	2	111113	CAP, NON THREADED, PROTECTOR
6	2	1098651	FLOW RESTRICTOR, .062, FOR 1/4 ID HOSE
5	2	101231	SCREW, 10-24 X 0.500 SST, PHILLIPS TRUSS HEAD
4	1	112738	BRACKET, MOUNT, 2 VALVE, CHEF 3, 6
3	1	112739	DOOR, PLATE, WATER INLET, CHEF 3,6
2	2	108734	NUT, "U" TYPE (EXTRUDED) #10-24 UNC-2B THREAD
1	2	22218	VALVE, SOLENOID, 1/4" NORM, 120 VOL
ITEM	QTY	PART NO.	DESCRIPTION

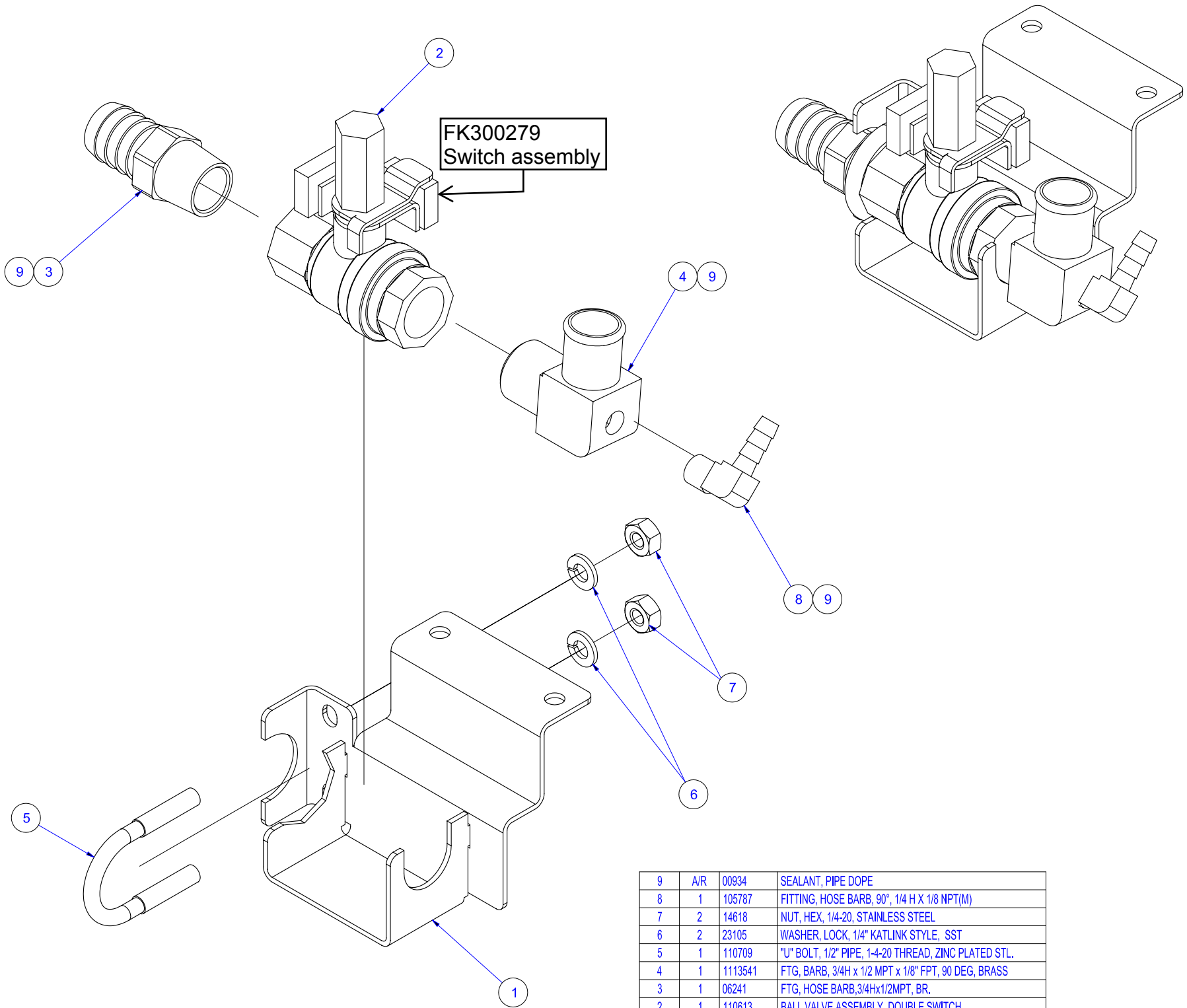


Complete Assembly 112904

After S/N 1206 2300 01024

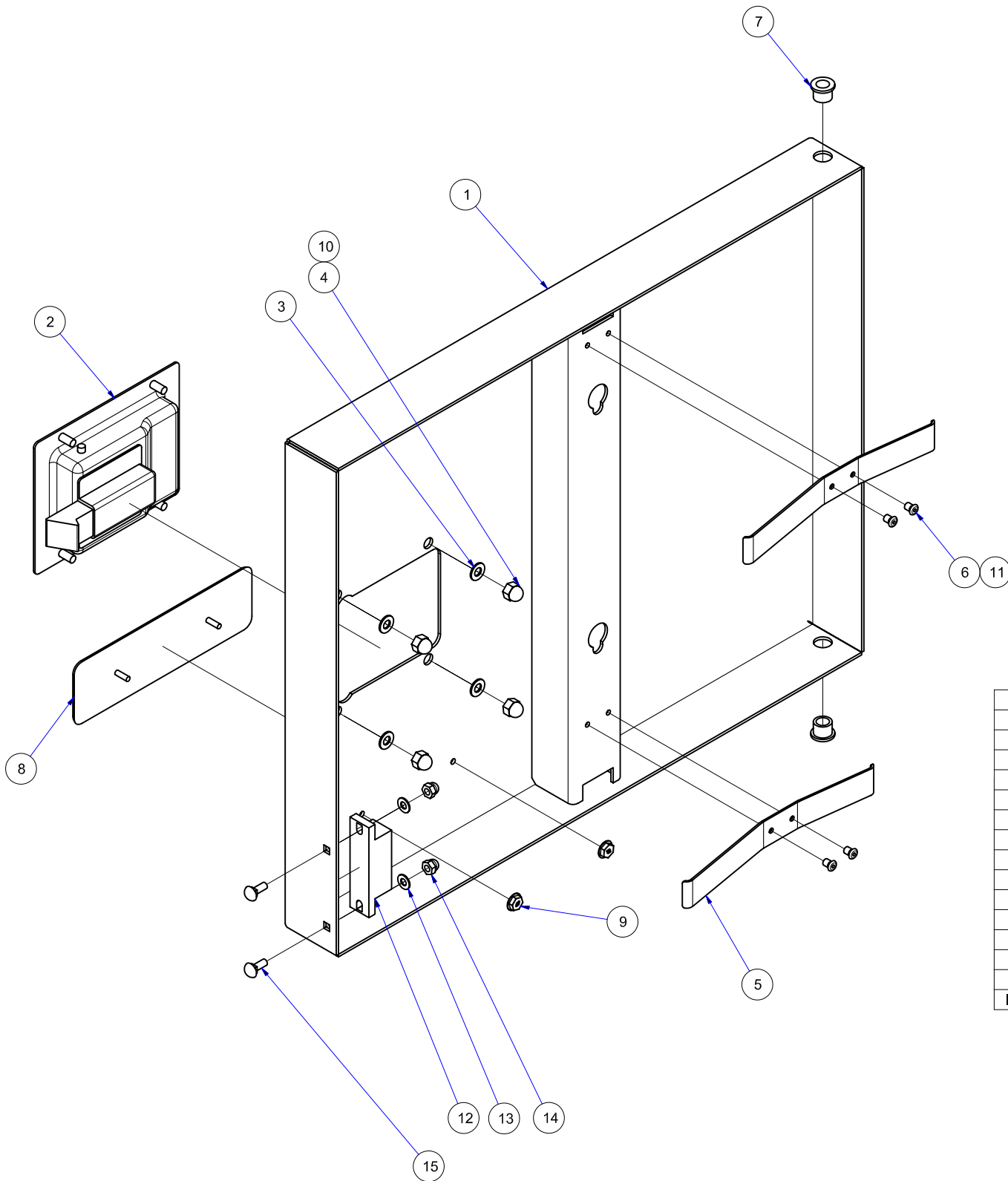


13	A/R	00934	SEALANT, PIPE DOPE
12	2	106466	FTG, HOSE, 1/4"H X 1/4" FPT, BR, STR
11	2	105277	FTG, HOSE BARB, 3/8 H X 1/4 NPT, BR
10	4	C6016070	CLAMP, HOSE, 0.630" - 0.756", ONE EAR, STEPLESS, SST, OETIKER 16700110 (REF 019.2-706R)
9	2	11149803500	HOSE, SILICONE, 0.375" ID X 0.655" OD X 3.500 LONG
8	2	111538	ADAPTER, G 3/4 FEMALE X 3/4-11.5 NH (GHT) MALE, BRASS
7	2	111113	CAP, NON THREADED, PROTECTOR
6	2	108034	WASHER 3/4 GHT HOSE
5	4	C8013004	SCREW, M4x0.7x10, HEX HEAD, SST
4	4	C8005021	WASHER, FLAT, 0.169 ID x 0.346 OD x 0.031 THK, SST
3	1	112903	DOOR, PLATE, WATER INLET, CHEF 3,6
2	-	-	-
1	2	300872	VALVE, 0.5 GPM, 1 WAY, 120VAC, 50/60 Hz, GARDEN HOSE THREAD
ITEM	QTY	PART NO.	DESCRIPTION

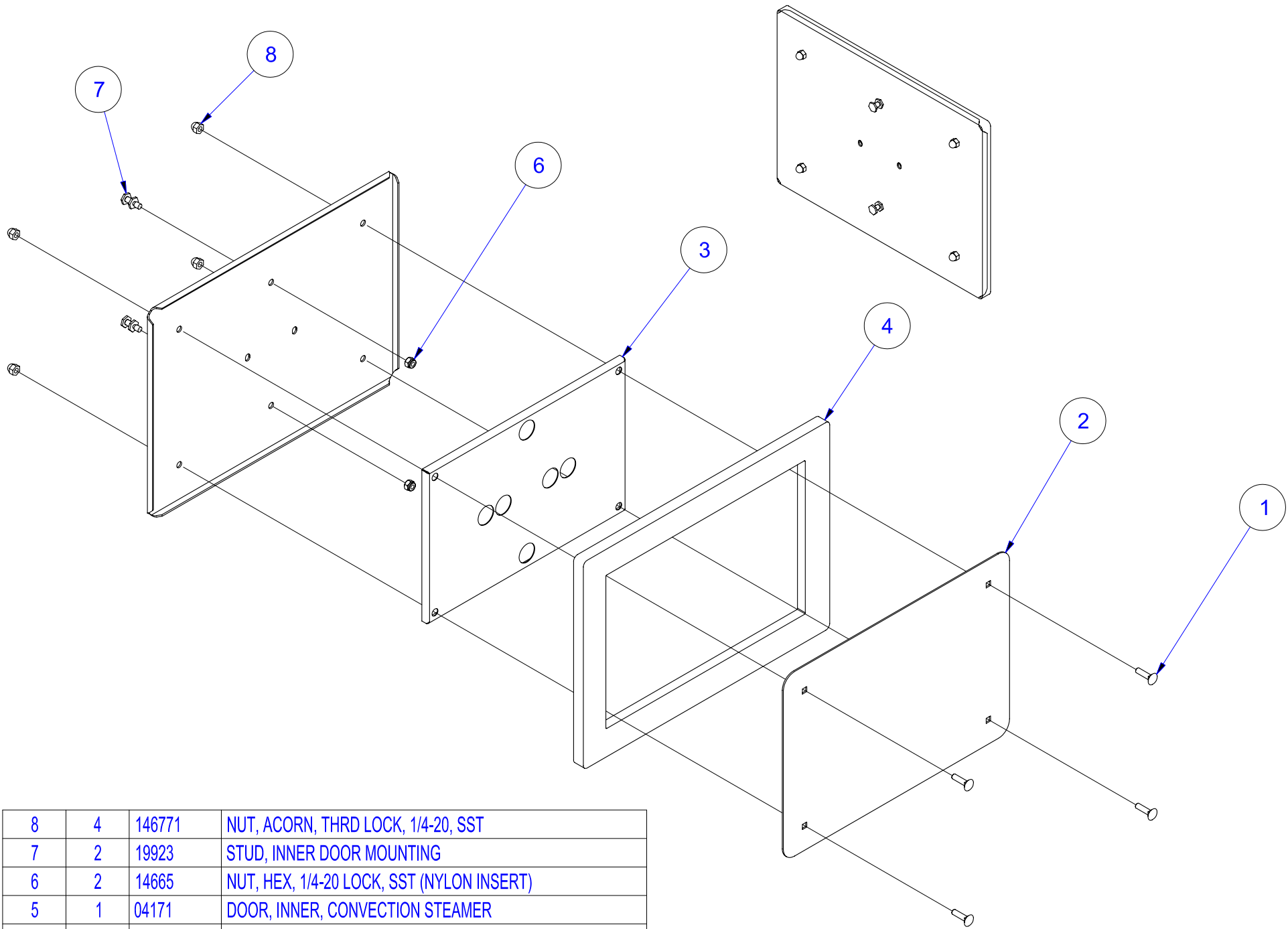


ITEM	QTY	PART NO.	DESCRIPTION
9	A/R	00934	SEALANT, PIPE DOPE
8	1	105787	FITTING, HOSE BARB, 90°, 1/4 H X 1/8 NPT(M)
7	2	14618	NUT, HEX, 1/4-20, STAINLESS STEEL
6	2	23105	WASHER, LOCK, 1/4" KATLINK STYLE, SST
5	1	110709	"U" BOLT, 1/2" PIPE, 1-4-20 THREAD, ZINC PLATED STL.
4	1	1113541	FTG, BARB, 3/4H x 1/2 MPT x 1/8" FPT, 90 DEG, BRASS
3	1	06241	FTG, HOSE BARB, 3/4Hx1/2MPT, BR.
2	1	110613	BALL VALVE ASSEMBLY, DOUBLE SWITCH
1	1	112257	BRACKET, VALVE, STEAMCHEF 3.1/6.1, HL

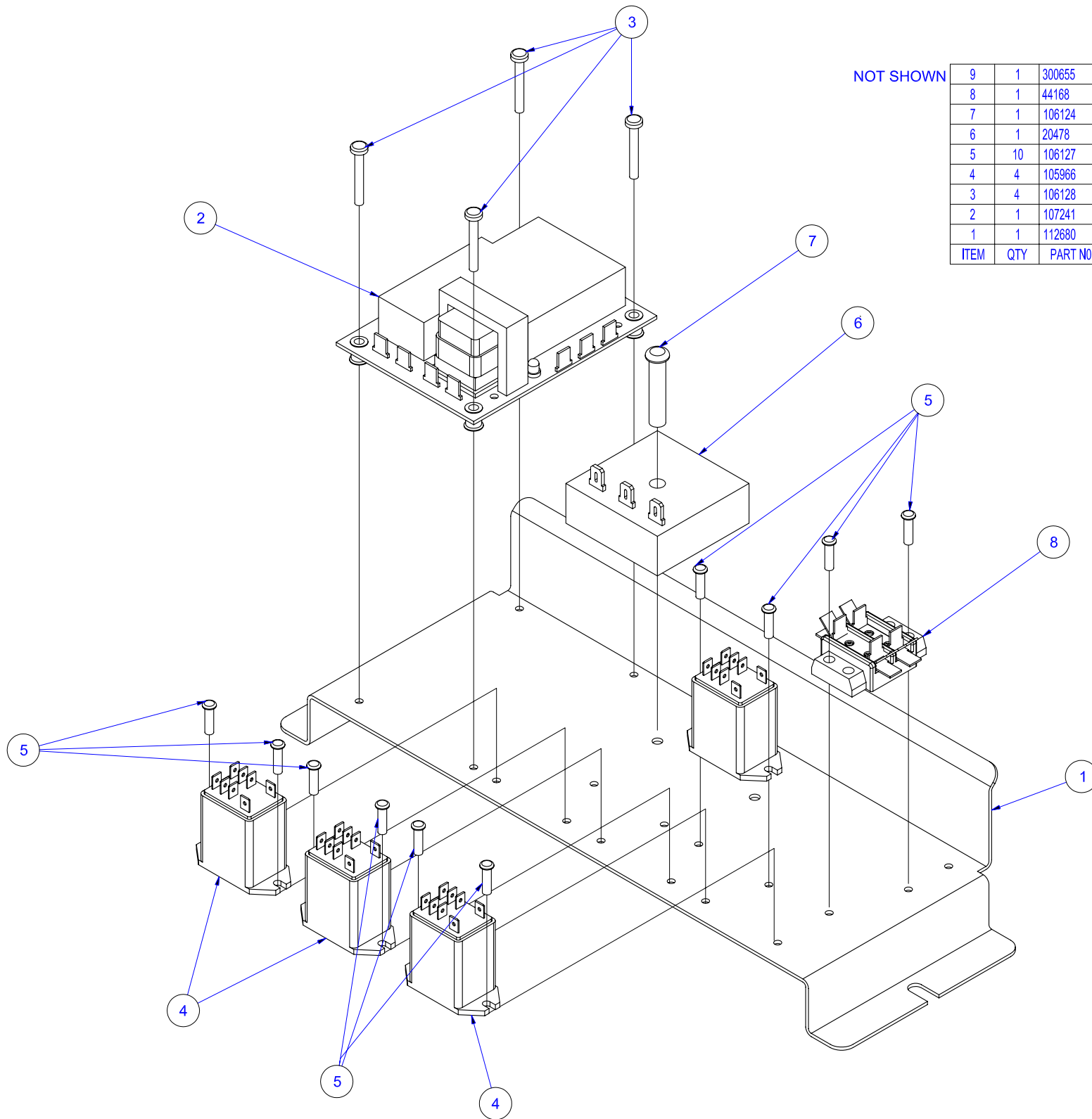
Complete Outer Door 110640



ITEM	QTY	PART NO.	DESCRIPTION
15	-	111592	SCREW, 8-32 X 1/2 CARRIAGE HEAD, SST
14	-	109164	NUT, HEX, ACORN, 8-32, SST, W/ THREAD LOC
13	-	101336	WASHER, FLAT, #8, SST
12	-	108879	MAGNET, DOOR STEAM CUTOFF
11	A/R	00933	SEALANT, RTV, CLEAR
10	A/R	104146	LOCKTITE #222 LOW STRENGTH
9	2	104987	NUT, WASHER STYLE, THD GC FOR 1/8 DIA STUD
8	1	105901	LABEL, NAMEPLATE, CLEVELAND, CAST
7	2	103641	BUSHING, DOOR HINGE
6	4	18357	RIVET, FLUSH BREAK, 0.125 DIA, 0.126/0.187 GRIP, SST
5	2	102228	SPRING, DOOR, 3/5 PAN
4	4	14679	NUT, #10-24 ACORN, SST
3	4	101655	WASHER, FLAT, #10, SST
2	1	103643	LATCH, DOOR-PADDLE TYPE
1	1	110485	OUTER DOOR, STEAMCHEF 3 WELDMENT - HINGED LEFT



8	4	146771	NUT, ACORN, THRD LOCK, 1/4-20, SST
7	2	19923	STUD, INNER DOOR MOUNTING
6	2	14665	NUT, HEX, 1/4-20 LOCK, SST (NYLON INSERT)
5	1	04171	DOOR, INNER, CONVECTION STEAMER
4	1	07138	GASKET, DOOR, CONV. STMR., SC
3	1	66214	PLATE, INNER DOOR GASKET
2	1	66595	PLATE, GASKET RETAINER
1	4	104719	SCREW, CARRIAGE, 1/4-20X1, SST
ITEM	QTY	PART NO.	DESCRIPTION



NOT SHOWN

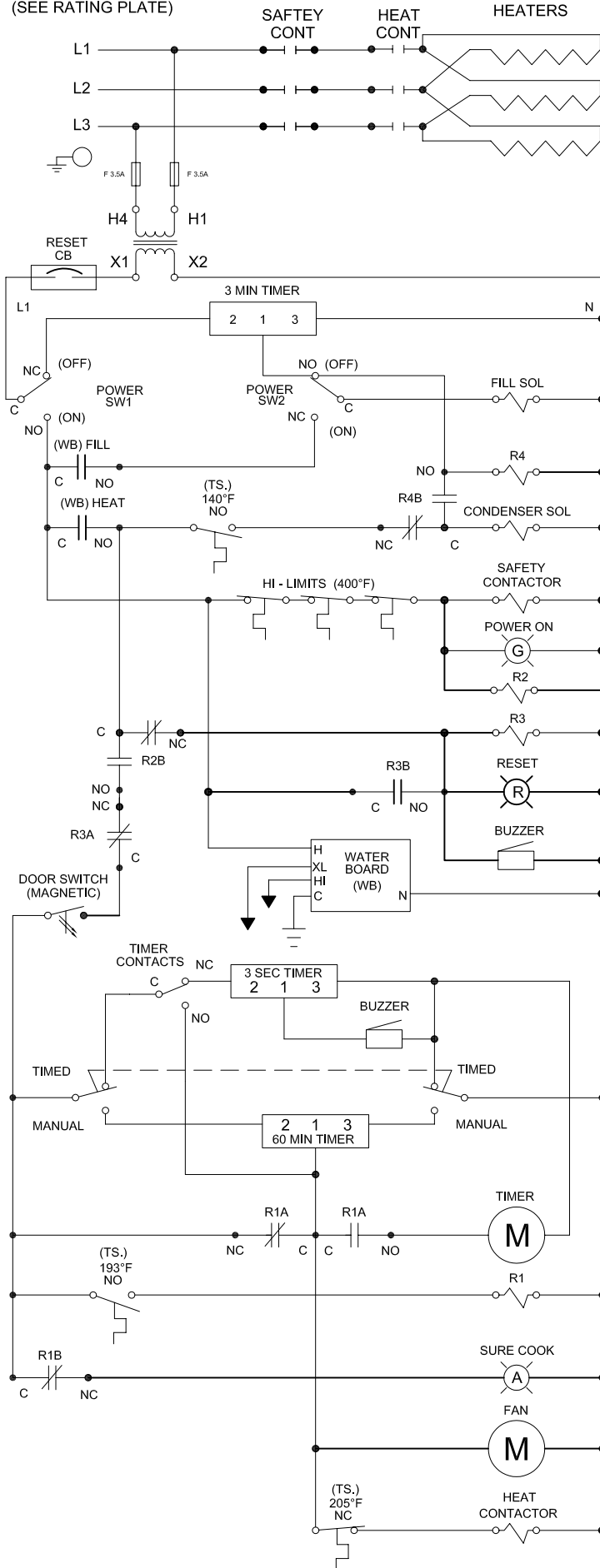
9	1	300655	HARNESS, COMPONENT PANEL
8	1	44168	TERMINAL, BLOCK ASM, 2 POLE
7	1	106124	SCREW, TORX/SLOT #10-32 X 1-1/4 LG
6	1	20478	TIMER, SOLID STATE INTERV 3 MINUTE
5	10	106127	SCREW, 6-32 X 1/2, TORX/PAN HD
4	4	105966	RELAY, DPDT-W/MTG TABS
3	4	106128	SCREW, 6-32 X 1 TORX/PAN HD
2	1	107241	BOARD, WATER LEVEL CONTROL
1	1	112680	PLATE, COMPONENT MOUNTING, STEAMCHEF, HL
ITEM	QTY	PART NO.	DESCRIPTION

208/240/480V
CUSTOMER
CONNECTION

STEAMCHEF 3.1/6.1 MECH TIMER (THREE PHASE)

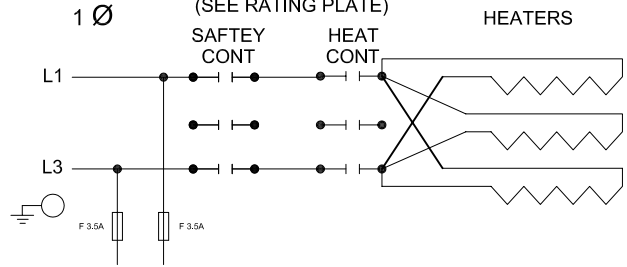
BEFORE 5-2010

3 Ø
(SEE RATING PLATE)



208/240/480V
CUSTOMER
CONNECTION

1 Ø
(SEE RATING PLATE)



ITEM PART No.

- 1 110198
- 2 300150
- 3 19972
- 4 107241
- 5 105966
- 6 03509
- 7 300254
- 8 109617
- 9 20477
- 10 44168
- 11 41350
- 12 108880
- 13 109602
- 14 109152
- 15 3003231
- 16 106288
- 17 300255
- 18 109374
- 19 109380
- 20 109494
- 21 12159
- 22 104224
- 23 22218
- 24 110613
- 25 110683
- 26 20478

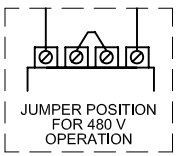
HEAT BLOCKS

ITEM	V	PART No.
27	208	300186 - 3KW
	240	3001861 - 3KW
	480	3001862 - 3KW
	208	300185 - 2KW
	240	3001851 - 2KW
	480	3001852 - 2KW
6.1 ONLY (13.5KW)		
	240	3003301 - 4.5KW
	480	300330 - 4.5KW

3.5A 600V

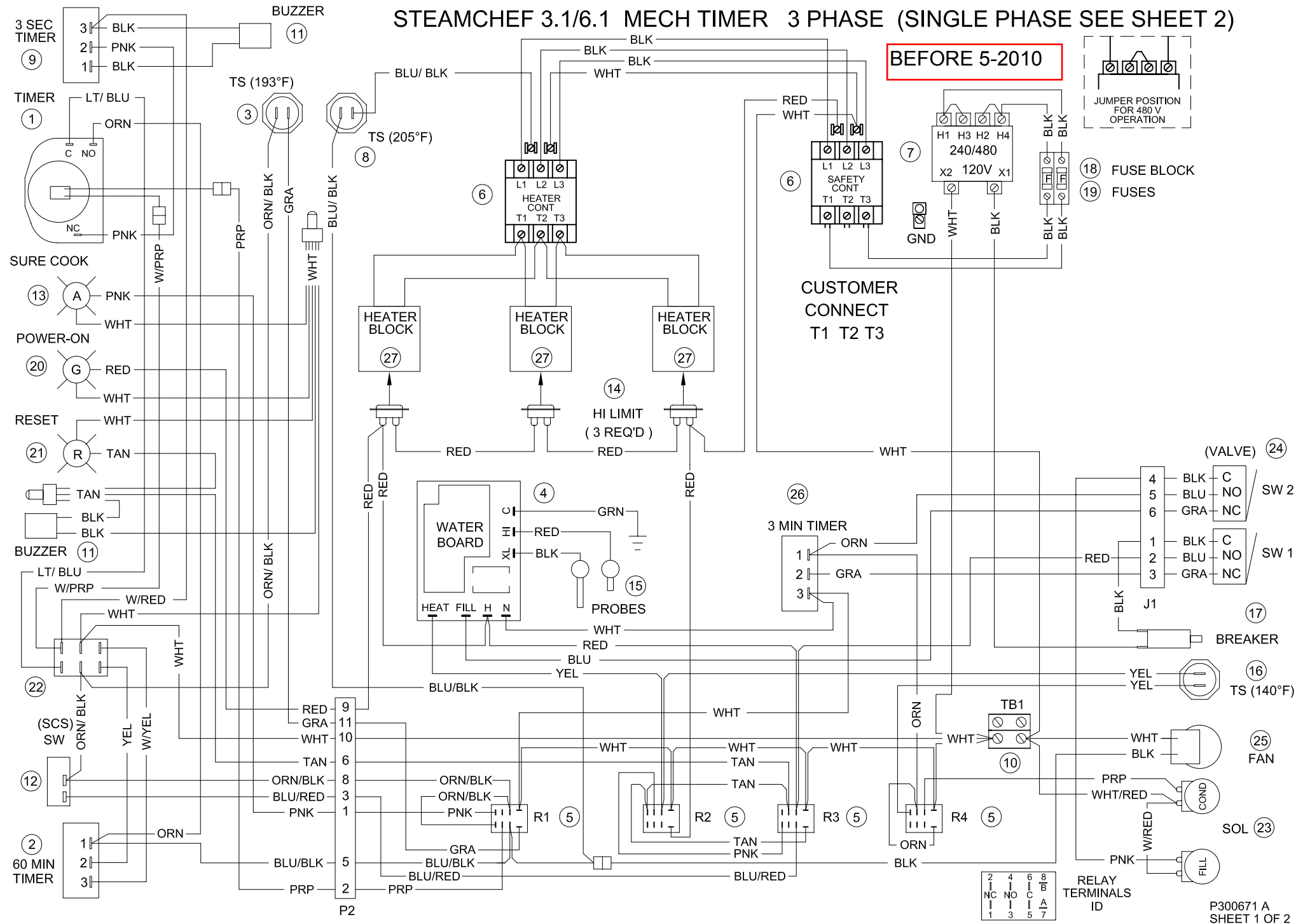
STEAMCHEF 3.1/6.1 MECH TIMER 3 PHASE (SINGLE PHASE SEE SHEET 2)

BEFORE 5-2010



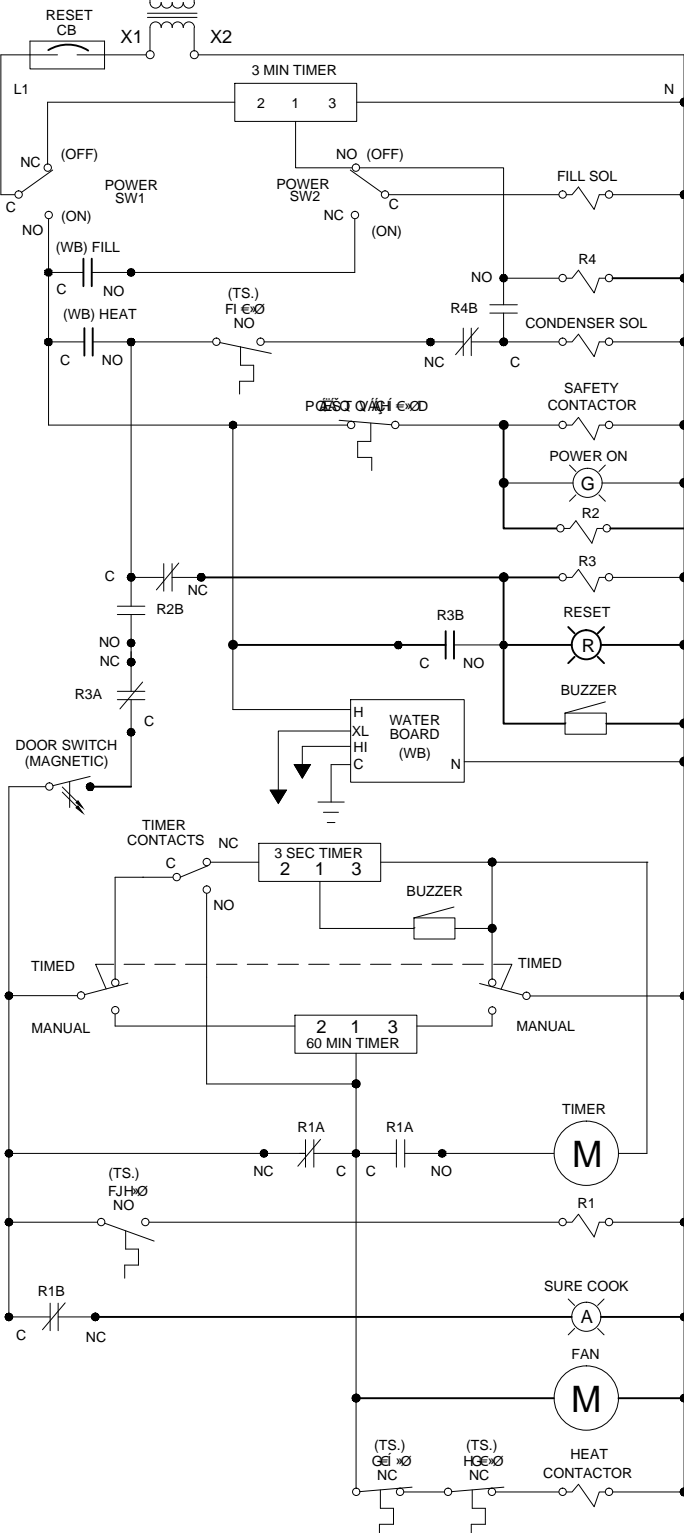
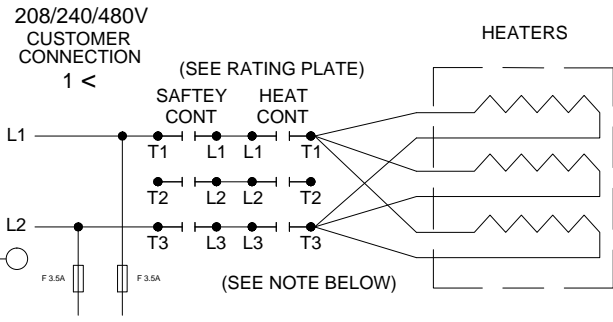
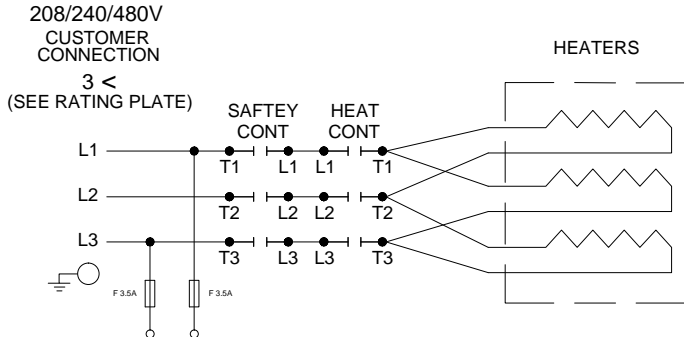
18 FUSE BLOCK
19 FUSES

CUSTOMER CONNECT
T1 T2 T3



RELAY TERMINALS ID	
2	NC
4	NO
6	C
8	B
1	3
3	5
5	7

STEAMCHEF 6.1 /3.1 MECH TIMER (THREE PHASE) AFTER 5-2010



NOTE:
(SINGLE PHASE)
208V / 240V
USE 75A. CONTACTORS
P/N 03506

ITEM PART No.

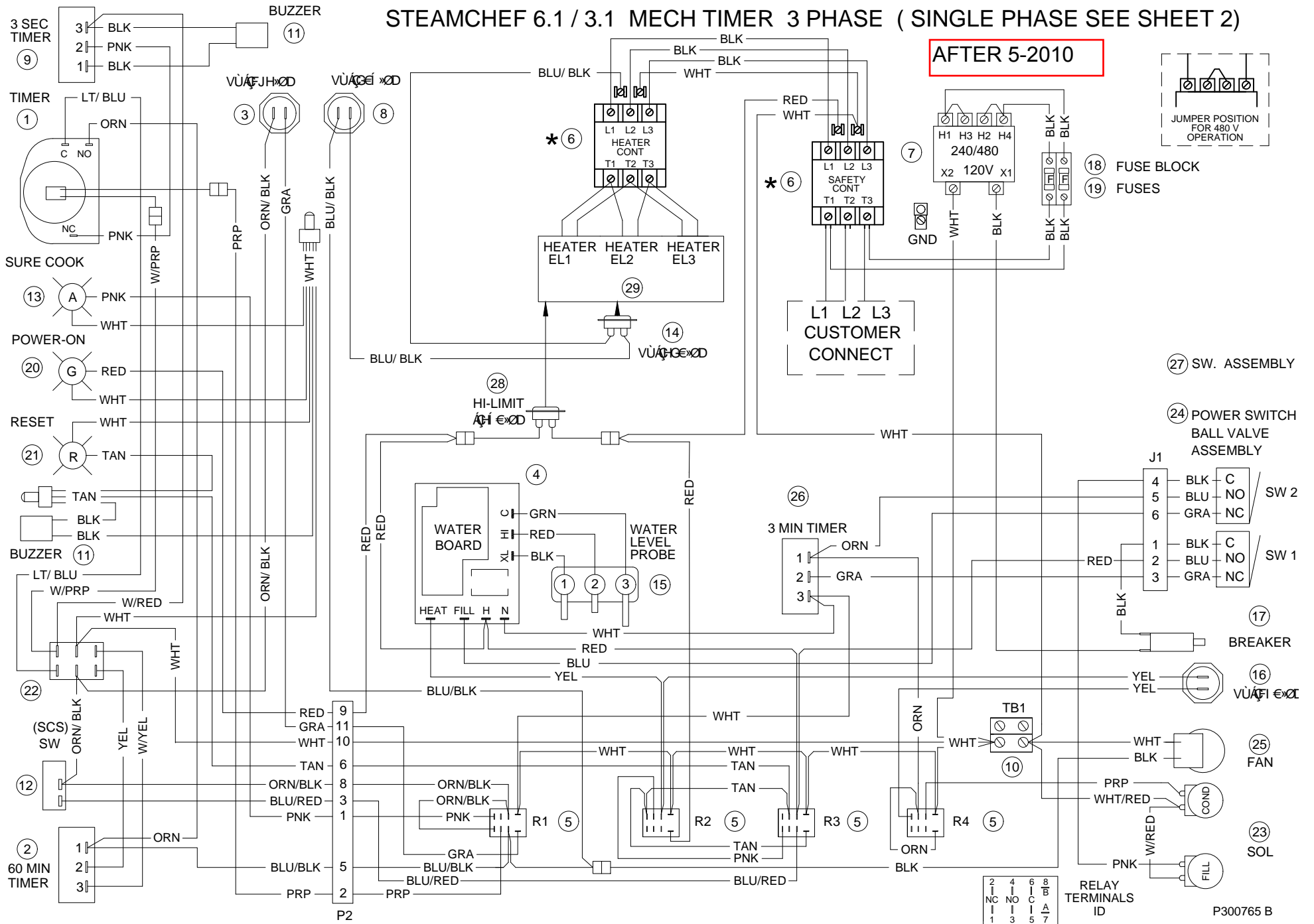
- 1 110198
- 2 300150
- 3 300677
- 4 107241
- 5 105966
- 6 03509 (50 AMP)
- * 03506 (75 AMP SINGLE PHASE UNITS)
- 7 300254
- 8 109617
- * 300156 (75 AMP SINGLE PHASE UNITS)
- 9 20477
- 10 44168
- 11 41350
- 12 108880
- 13 109602
- 14 300762
- 15 300688
- 16 106288
- 17 300255
- 18 109374
- 19 109380 3.5A 600V
- 20 109494
- 21 12159
- 22 104224
- 23 22218
- 24 110613
- 25 110683
- 26 20478
- 27 300750
- 28 300701

ITEM V PART No.

- 29 208 300705 (10.7 KW)
- 220 300705 (12 KW)
- 240 300705 (14.3 KW)
- 480 300761 (12 KW)

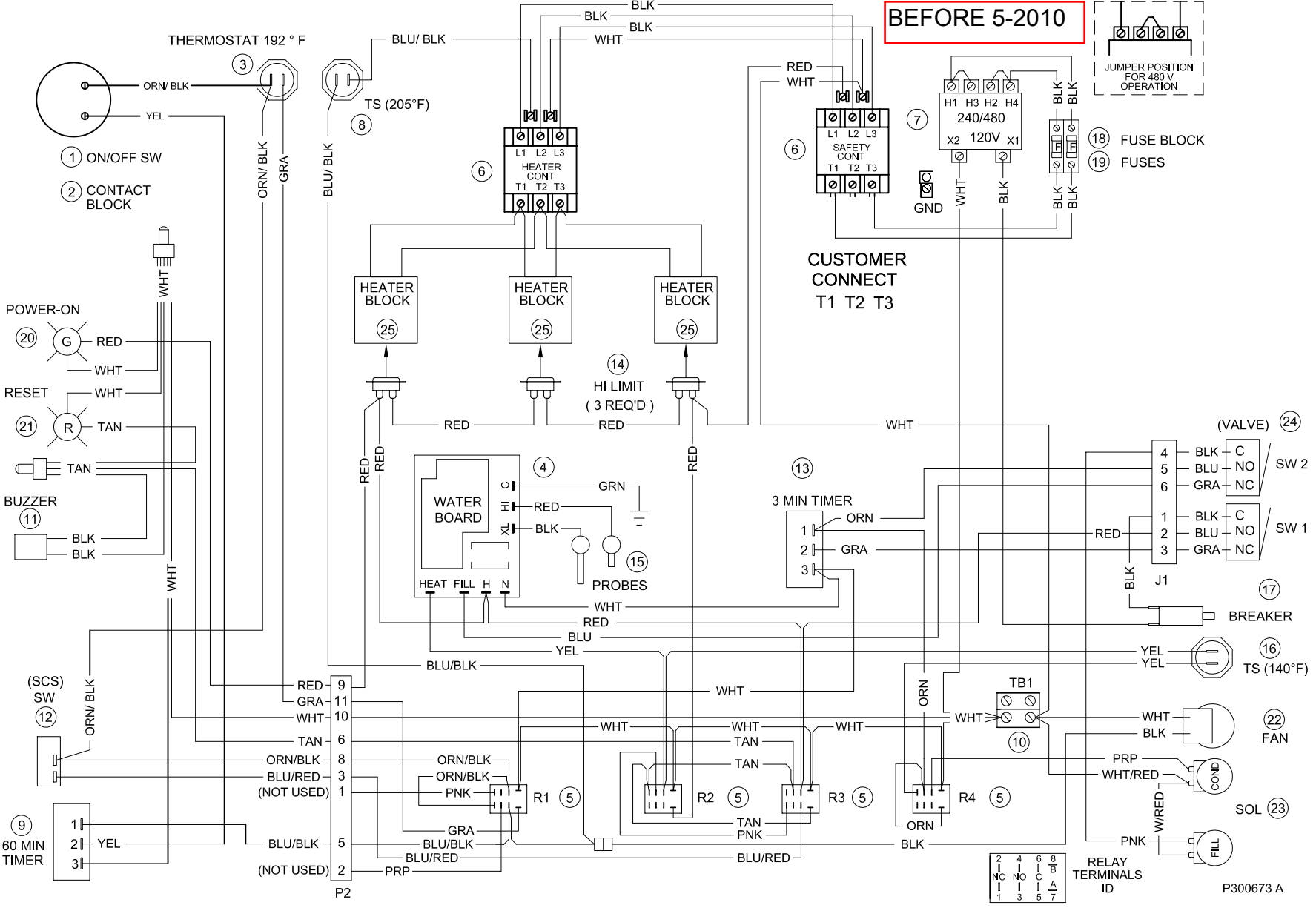
STEAMCHEF 6.1 / 3.1 MECH TIMER 3 PHASE (SINGLE PHASE SEE SHEET 2)

AFTER 5-2010



STEAMCHEF 3.1/ 6.1 ON / OFF CONTROL (THREE PHASE)

BEFORE 5-2010



ITEM PART No.

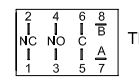
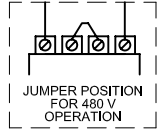
- 1 102534
- 2 102533
- 3 19972
- 4 107241
- 5 105966
- 6 03509
- 7 300254
- 8 109617
- 9 300150
- 10 44168
- 11 41350
- 12 108880
- 13 20478
- 14 109152
- 15 3003231
- 16 106288
- 17 300255
- 18 109374
- 19 109380 3.5A 600V
- 20 109494
- 21 12159
- 22 110683
- 23 22218
- 24 110613

HEAT BLOCKS

- | ITEM | V | PART No. |
|------|-----|---------------|
| 25 | 208 | 300186 - 3KW |
| | 240 | 3001861 - 3KW |
| | 480 | 3001862 - 3KW |
| | 208 | 300185 - 2KW |
| | 240 | 3001851 - 2KW |
| | 480 | 3001852 - 2KW |

6.1 ONLY (13.5KW)

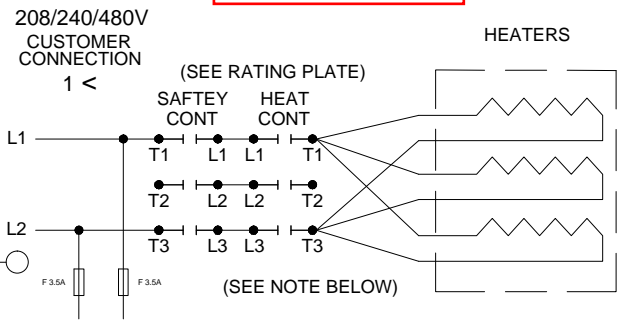
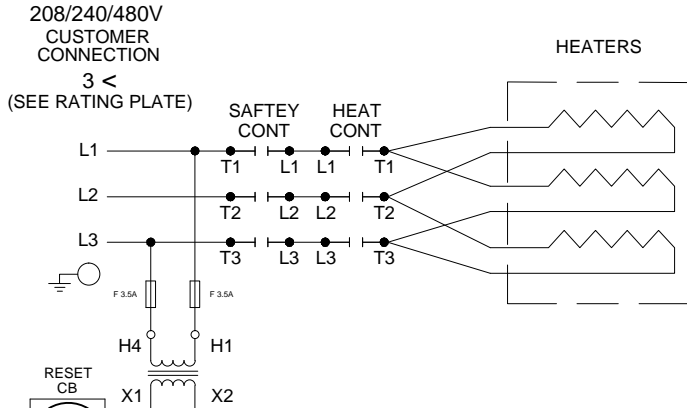
- 240 3003301 - 4.5KW
- 480 300330 - 4.5KW



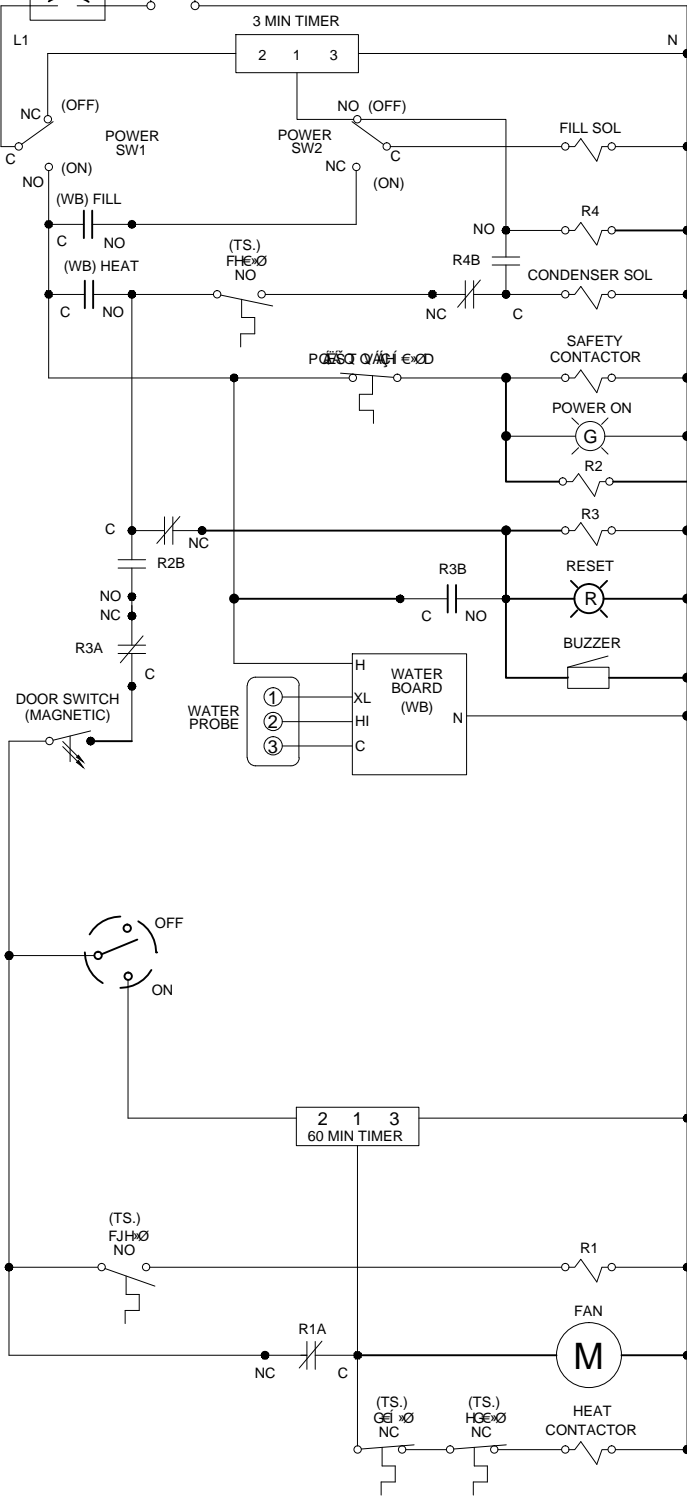
P300673 A

STEAMCHEF 3.1 / 6.1 ON/OFF CONTROL

AFTER 5-2010



NOTE:
 (SINGLE PHASE)
 208V / 240V
 USE 75A. CONTACTORS
 P/N 03506



ITEM PART No.

- 1 102534
- 2 102533
- 3 300677
- 4 107241
- 5 105966
- 6 03509 (50 AMP)
- * 03506 (75 AMP SINGLE PHASE UNITS)
- 7 300254
- 8 109617
- * 300156
- 9 300150
- 10 44168
- 11 41350
- 12 108880
- 13 20478
- 14 300762
- 15 300688
- 16 106288
- 17 300255
- 18 109374
- 19 109380 3.5A 600V
- 20 109494
- 21 12159
- 22 110683
- 23 22218
- 24 110613
- 25 300750
- 26 300701

ITEM V PART No.

- 27 208 300705 (10.7 KW)
- 220 300705 (12 KW)
- 240 300705 (14.3 KW)
- 480 300761 (12 KW)

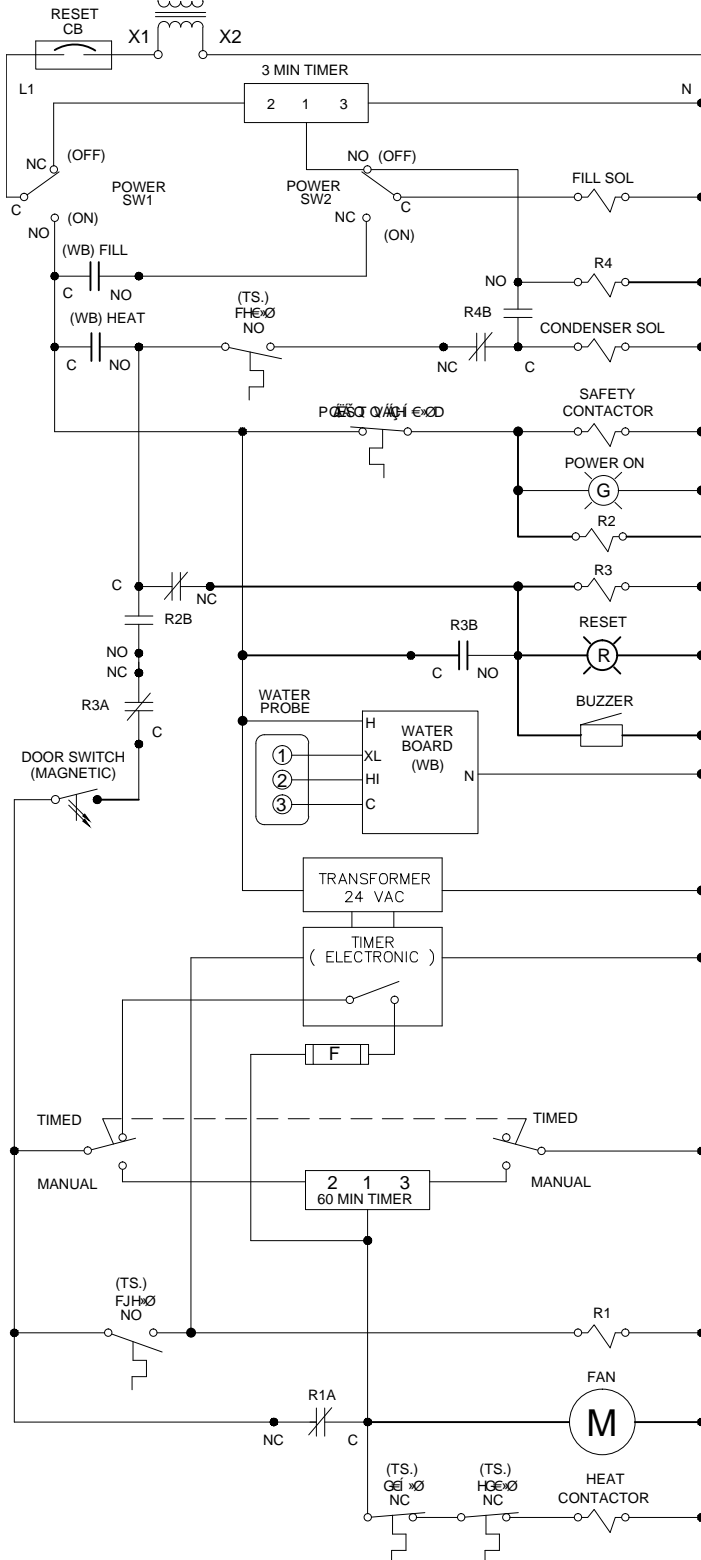
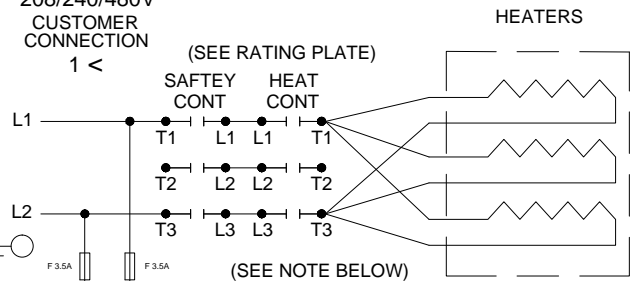
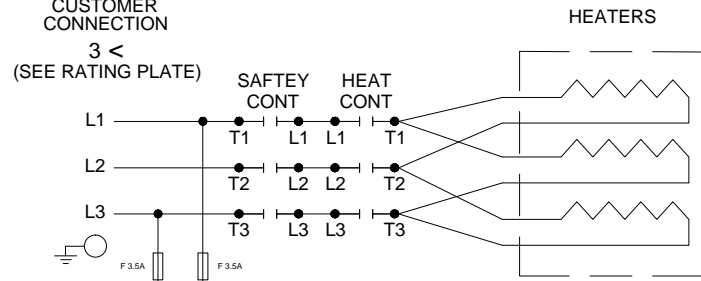


AFTER 5-2010

STEAMCHEF 3.1/6.1 ELECTRONIC TIMER (3 PHASE)

208/240/480V
CUSTOMER
CONNECTION
3 <
(SEE RATING PLATE)

208/240/480V
CUSTOMER
CONNECTION
1 <



NOTE:

(SINGLE PHASE)
220V / 240V
USE 75A. CONTACTORS
P/N 03506

ITEM PART No.

- 1 104389
- 2 300150
- 3 300677
- 4 107241
- 5 105966
- 6 03509 (50 AMP)
- * 03506 (75 AMP SINGLE PHASE UNITS)
- 7 300254
- 8 109617
- * 300156
- 9 104390
- 10 44168
- 11 41350
- 12 108880
- 13 20478
- 14 300762
- 15 300688
- 16 106288
- 17 300255
- 18 109374 3.5A 600V
- 19 109380
- 20 106909
- 21 12159
- 22 104224
- 23 22218
- 24 110613
- 25 110683
- 26 300750
- 27 300701

ITEM V PART No.

- 28 208 300705 (10.7 KW)
- 220 300705 (12 KW)
- 240 300705 (14.3 KW)
- 480 300761 (12 KW)



STEAMCHEF 3.1 /6.1 ELECTRONIC TIMER THREE PHASE (SINGLE PHASE SEE SHEET 2)

