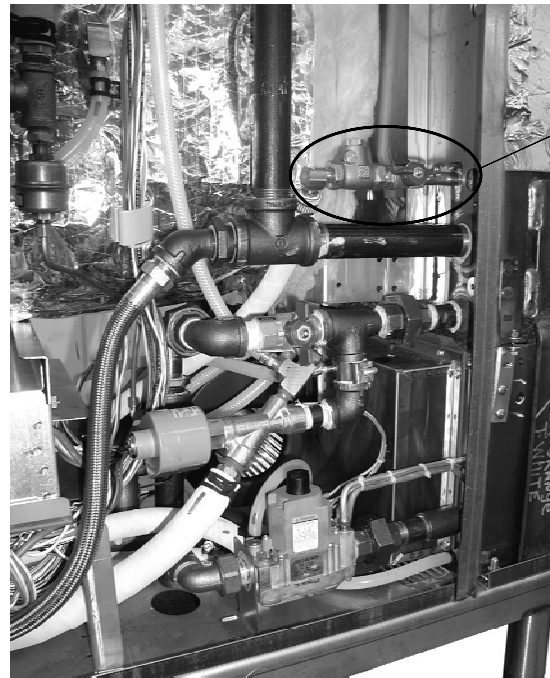


Installation Instructions

for

STEAMCRAFT POWER 10
BOILER WATER INLET CONVERSION KIT
PART No. FK109219REVD-N



EXISTING
BOILER
WATER
INLET

Figure 1

THIS KIT CONVERTS BOILERS WITH THE WATER INLET
POSITIONED AS SHOWN IN FIGURE 1 TO AN INLET
CONNECTED TO THE DRAIN VALVE.

1333 East 17th Street
Cleveland, Ohio 44110

Phone: (216) 481-4900
Fax: (216) 481-3782



Part Nø10774-A

6/02