

Cleveland

SteamCraft® Gemini™ 10

TWO COMPARTMENT FLOOR MODEL DESIGN. PRESSURELESS
CONVECTION STEAMER, TWIN, INDEPENDENT GAS-FIRED GENERATORS

Project _____
Item _____
Quantity _____
FCSI Section 11400 _____
Approved _____
Date _____

SteamCraft® Generator Style High Speed Convection Steamers

Models

- 24-CGA-10.2



Standard Features

- Cooking Capacity for up to ten 12" x 20" x 2 1/2" deep Cafeteria Pans, five each compartment.
- Totally independent cooking compartments, each has its' own generator, gas valve and water level controls - no shared components
- Exclusive High Efficiency Gas Power Burner (forced air) Generator: Produces more steam for faster cooking while lowering operating costs (72M BTU's per compartment)
- Easy Access Cleaning Port: Each generator has a delimiting port located on the outside, top of the unit
- Generator Steam Standby Mode: Holds generator at a steaming temperature, allows unit to start cooking quickly
- Easytimer with 99 minute Digital Readout in minutes and seconds. Selector Dial with LED Light Descale Indicator. Sure Cook load compensating timer. Manual Constant Steam Mode.
- Exclusive Two-Piece Compartment door: Slammable, self-adjusting door provides and airtight seal, reversible door gasket for extended life
- Exclusive Gemini Drain/Power Control System: Simple, reliable 1/2" ball valve style drain automatically turns power ON/OFF
- Exclusive Brass Steam Jets distribute even-high velocity steam throughout cooking compartment for faster cooking times
- Easy, Front -Access Generator Controls comes with a pullout drawer for simple servicing of unit
- 6" Stainless Steel Adjustable Legs with Flanged Feet
- Approvals: CSA (AGA, CSA) and U.L./NSF#4
- Compartment Steam Shut-Off Switch when compartment door is opened
- Field Reversible Door Hinging.

Short Form Specifications

Shall be Two Compartments, Cleveland Convection Steamer series SteamCraft® Gemini™ 10, Model 24-CGA-10.2, Twin Gas Atmospheric Steam Generator, 72M BTU's input per compartment. Independent steam generator, gas valve and water level control system. Automatic Generator Blowdown. Steam Generator with Automatic Water Fill on start up. Exclusive remote probe-type water level controls. Exclusive Brass "Steam Jet" distribution system. Two-piece free-floating compartment door. Type 430 Stainless Steel exterior and cooking compartments. Pullout service drawer for controls and Gemini Drain/Power Control System. Exclusive Cold Water Condenser design. Choice of Compartment Controls. Manual By Pass for continuous steaming.

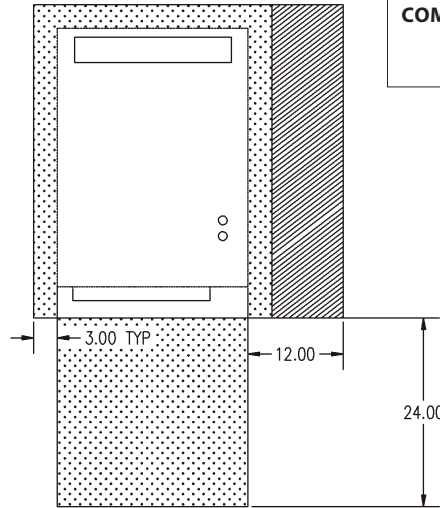
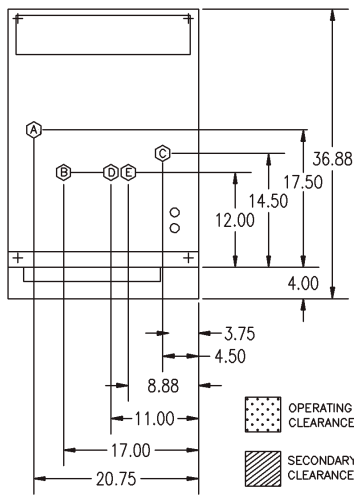
Options & Accessories

- Propane Gas (PG)
- Dissolve® Descale Solution, 6 one gallon container w/quart markings (106174)
- Water Filters

KE004046-23

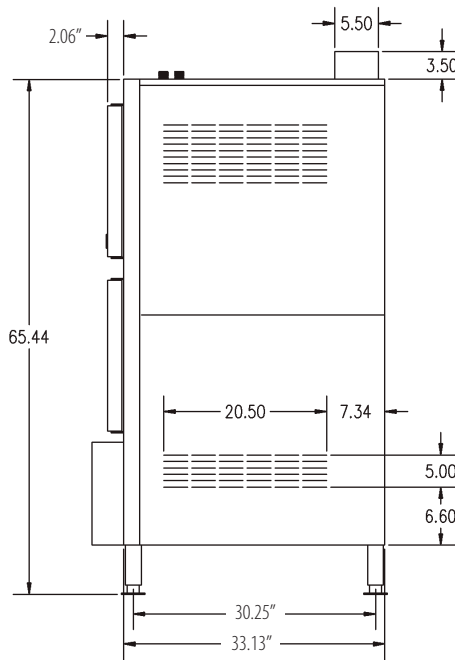
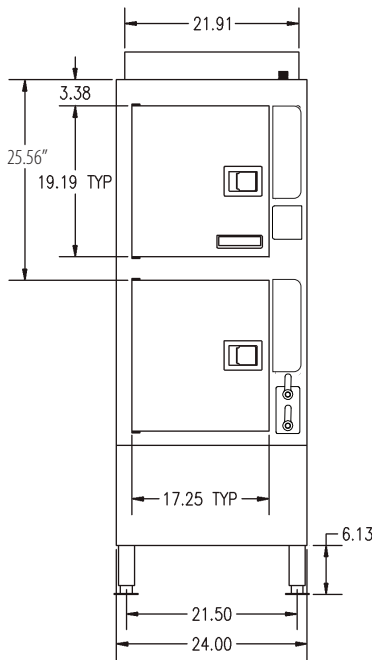
Cleveland

SteamCraft® Generator Style High Speed Convection Steamers



COMPARTMENT HAS CAPACITY FOR:

- Five, 12" x 20" x 2 1/2" deep Cafeteria Pans



WATER QUALITY REQUIREMENTS (Boilers, Generators)

TTDS:	50-250 ppm
Hardness:	50 - 200 mm (3 - 12 gpg)
pH value:	7.0 - 8.5
CL (Chloride):	max 50 ppm
Cl2 (free chlorine):	max 0.1 ppm
SiO2 (silica):	max 13 ppm
NH2Cl: (mono-chloramine)	max 0.1 ppm
Total Alkalinity:	50 - 100 ppm

A GAS			B ELECTRIC	CD COLD WATER	CLEARANCE	D DRAINAGE
1 1/2" IPS line size, 3/8" connection			120V-1Phase, 60 Hz. 2 Blowers & Controls 150 watts each ** Do not connect to GFI outlet. See note below.	35 psi minimum 60 psi maximum 1/2" IPS-M NPT for Generator 1/2" IPS-M NPT for Condenser	Right - 3", Left - 3", Rear - 3" (12" on control side if adjoining wall or equipment is over 30" high for service access) Contact factory for variances to clearances.	1/2" IPS-M Do not connect other units to this drain Drain must not be located beneath the steamer itself Preferred floor drain location should be a minimum distance (from the unit) of at least 12" from the left side, 12" from the right side, 6" from the front and 6" from the rear. Do not use PVC pipe
NATURAL	PROPANE	BTU				
Piping 3/8" N.P.T.	Piping 3/8" N.P.T.	72,000 each				
Supply pressure 4.50" W.C. Min. 14.00" W.C. Max.	Supply pressure 11.00" W.C. Min. 14.00" W.C. Max.	Generator, 144,000 total				
Manufacturer must be notified if unit will be used above 2,000 feet						

NOTES:
 **DO NOT CONNECT TO GFI OUTLET. CLEVELAND RANGE RECOMENDS GAS FIRED 120 VOLT STEAMERS BE HARD WIRED DIRECTLY TO ELECTRICAL SYSTEM.
 Cleveland Range reserves right of design improvement or modification, as warranted.
 Many regional, state and local codes exist and it is the responsibility of the owner and installer to comply with the codes.
 Cleveland Range equipment is built to comply with applicable standards for manufacturers. Included among those approval agencies are U.L./NSF#4 and CSA (AGA, CGA).

(NOT TO SCALE)

760 Beta Drive, Unit D
 Mayfield Village, Ohio 44143

Tel 1.216.481.4900
 Fax 1.216.481.3782
 Email steam@clevelandrange.com

www.clevelandrange.com
 Section 3, Page 12
 11 / 23

Timeless Quality, Trusted For Life®