

Cleveland

TWO COMPARTMENT, PRESSURELESS,
ELECTRIC STEAM BOILER, 24, 36 OR 48 KW,
24" WIDE CABINET BASE DESIGN

Project _____
Item _____
Quantity _____
FCSI Section 11400 _____
Approved _____
Date _____

Classic Series Convection Steamers, 15 PSI Boiler Base Style

Models

- 24-CEM-24
- 24-CEM-48
- 24-CEM-36



Short Form Specifications

Shall be Two Compartments, CLEVELAND Convection Steamer, Model 24-CEM- _____, Electric Steam Boiler, _____ KW, _____ volts, _____ phase, 3 wire. Solid State Controls operate timing, water level and safety functions. Electric Steam Boiler with Automatic Water Fill on start-up and Automatic Blowdown with additional Manual Drain Valve. For each cooking compartment: 60 minute Mechanical Timer, Manual Operation Mode and Cold Water Condenser. Type 304 Stainless Steel cooking compartment.

Standard Features

- Cooking Capacity for up to six 12" x 20" x 2 1/2" deep Cafeteria Pans.
- Pressureless cooking with forced convection steam, permitting doors to be opened while cooking continues.
- Solid State Controls operate water level and safety functions.
- Each compartment is equipped with a 60 minute mechanical timer, separate bypass switch for constant steaming and a cold water condenser for superior cooking results.
- Instant Steam Standby Mode: Holds boiler at steaming temperature. Allows unit to start cooking instantly.

- Durable 14 Gauge Stainless Steel Construction: For Steam Cooking Cavity.
- Separate Main Power Switch for "On/Off"
- Exclusive Steam Cooking Distribution System: The exclusive Convection Jets produce a high velocity convection steam without fans. Coved Corner design in cooking compartment distributes heat evenly and is easy to keep clean. Creased top & bottom enhance drainage. Cold Water Condenser for each compartment maintains a dry steam. Fully insulated cooking compartment for thermal efficiency. Removable Stainless Steel Slide Racks for easy cleaning.
- Exclusive "Cool to the Touch" Compartment Door Design: Free floating inner door with reversible door gasket provides an air tight seal. Stainless Steel Slam/Latch Door Latch mechanism provides greater reliability.
- Left Hand Door Hinging: Compartment Doors hinged left, controls on the right.
- Modular Cabinet Base with Hinged Door.
- Electric Steam Boiler: Automatic Water Fill on start up.
- Automatic Boiler Drain at shutdown: Contains a "Water Jet" Spray Rinse Cleaning Cycle to keep drain clear.
- Automatic Water Level Control System with Low Water Power Cut-off Circuit.
- Steam boiler equipped with High Limit Pressure Safety Switch, 15 psi Safety Valve, and Steam Boiler Pressure Gauge.
- Secondary Low Water Cut-Off, factory installed (CALE) (Required for AZ. AR. CA. CO. CT. DE. FL. GA. HI. IL. IA. KS. MD. MA. MI. MN. MT. NE. NV. NM. NC. OK. OR. PR. RI. TN. UT. VA. WA. WV., Buffalo, NY, Wash. DC)
- NSF Certified 6" Stainless Steel Legs with adjustable flanged feet for a one inch level adjustment.
- Standard voltage 208 or 240 volts, 60 Hz, 3 phase.
- All Controls are serviceable from the front.

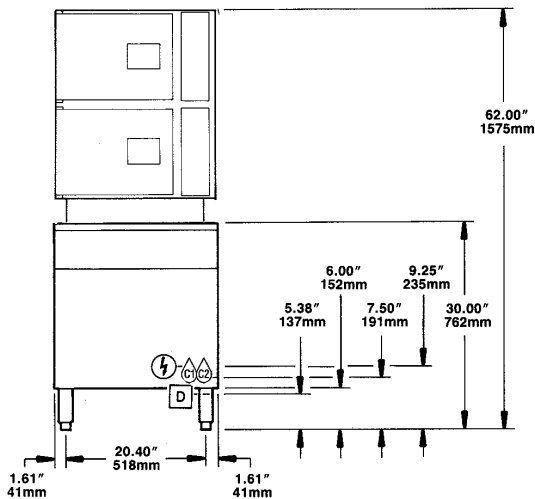
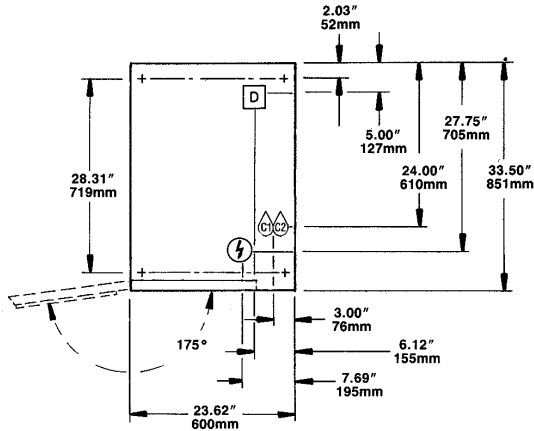
Options & Accessories

- Cafeteria pans in depths of 1", 2 1/2", 4" and 6"
- Voltages other than standard
- Power Take Off Kit (EPTO), Kettle Interconnecting Kit (IMK)
- Correctional Packages
- Boiler Descaling Pump Kit (107142)
- Water Filters

KE004046-20

Cleveland

Classic Series Convection Steamers, 15 PSI Boiler Base Style



NOTE: When ordering optional reverse door openings: Control Panel, door openings and cooking compartments are opposite that shown.

COMPARTMENT HAS CAPACITY FOR:

- Three, 12" x 20" x 2 1/2" deep Cafeteria Pans

WATER QUALITY REQUIREMENTS (Boilers, Generators)





TTDS:	50-250 ppm
Hardness:	50 - 200 mg (3 - 12 gpg)
pH value:	7.0 - 8.5
CL (Chloride):	max 50 ppm
Cl2 (free chlorine):	max 0.1 ppm
SiO2 (silica):	max 13 ppm
NH2Cl: (mono-chloramine)	max 0.1 ppm
Total Alkalinity:	50 - 100 ppm

SHIPPING WEIGHTS & DIMENSIONS

Model	Weight	Width	Depth	Height
24-CEM-24	541 lbs	30"	43"	68"

ELECTRIC ⚡

KW	Volts	Watts	Ph	Amps	Wire
24	208	21,500	3	59.7	3
	220	24,000	3	63.1	3
	240	24,000	3	57.8	3
	440	20,200	3	26.5	3
	480	24,000	3	28.9	3
36	208	32,200	3	89.5	3
	220	36,000	3	94.6	3
	240	36,000	3	86.7	3
	440	30,200	3	39.7	3
	480	36,000	3	43.4	3
48	208	42,900	3	119.2	3
	220	48,000	3	126.1	3
	240	48,000	3	115.6	3
	440	40,300	3	52.9	3
	480	48,000	3	57.8	3

WATER 	DRAINAGE 	CLEARANCE
1/4" NPT Cold Water Inlet 35 psi minimum 60 psi maximum  Condenser Feed  Boiler Feed	The Floor Drain must be located outside the confines of the equipment base. 1 1/2" I.P.S. common drain. Do not connect other units to this drain. Do not use PVC pipe for drain.	Right - 3", Left - 3", Rear - 3" (12" on control side if adjoining wall or equipment is over 30" high for service access) Contact factory for variances to clearances.

NOTES:

Cleveland Range reserves right of design improvement or modification, as warranted.
Many regional, state and local codes exist and it is the responsibility of the owner and installer to comply with the codes.
Cleveland Range equipment is built to comply with applicable standards for manufacturers. Included among those approval agencies are ASME/N. Bd, UL and NSF.

(NOT TO SCALE)

760 Beta Drive, Unit D
Mayfield Village, Ohio 44143

Tel 1.216.481.4900
Fax 1.216.481.3782
Email steam@clevelandrange.com

www.clevelandrange.com
Section 4, Page 4
06 / 2021

Timeless Quality, Trusted For Life®