

# Cleveland

## SteamCraft® 10

TWO COMPARTMENT FLOOR MODEL DESIGN PRESSURELESS CONVECTION STEAMER DIRECT STEAM, 24" WIDE DESIGN

Project \_\_\_\_\_  
Item \_\_\_\_\_  
Quantity \_\_\_\_\_  
FCSI Section 11400 \_\_\_\_\_  
Approved \_\_\_\_\_  
Date \_\_\_\_\_

SteamCraft® Generator Style High Speed Convection Steamers

### Models

- 24-CDP-10



### Standard Features

- Cooking Capacity for up to ten 12" x 20" x 2 1/2" deep Cafeteria Pans.
- Easytimer with 99 minute Digital Readout in minutes and seconds. Selector Dial with LED Light Descale Indicator. Sure Cook load compensating timer. Manual Constant Steam Mode.
- Separate Switch for Power "on/off."
- Exclusive Steam Cooking Distribution System: Exclusive Brass Steam Jets produce a high velocity convection steam without fans. Coved Corner design in cooking compartment distributes heat evenly, and is easy to keep clean. Creased top & bottom enhance drainage. Cold Water Condenser for each compartment maintains a dry steam. Fully insulated cooking compartment for thermal efficiency. Removable Stainless Steel Slide Racks.
- Exclusive "Cool to the Touch" Compartment Door Design: Free floating inner door with reversible door gasket provides an air tight seal. Stainless Steel Slam/Latch Door Latch mechanism for reliability.
- Condensate Drip Trough: Provided under lower compartment door to collect condensate.
- Left Hand Door Hinging: Compartment Doors hinged left, control on the right.
- Moisture Separator for incoming steam.
- Pressure reducing Valve or 20-50 psi steam supply pressure, based on a 3/4" line size.
- Single Cold water Connection.
- NSF Certified 6" Stainless Steel Legs with adjustable flanged feet for a one inch level adjustment.
- Standard voltage for controls: 115 volts, 60 Hz. single phase.
- Clean non-toxic, uncontaminated steam is required for all "Direct Steam" steamers.
- Compartment Door Steam Shut Off Switch (SCS)
- Easytimer with 99 minute Digital Readout in minutes and seconds. Selector Dial with LED Light Descale Indicator. Sure Cook load compensating timer. Manual Constant Steam Mode.
- Field Reversible Door Hinging.

### Short Form Specifications

Shall be CLEVELAND, SteamCraft® Ultra 10, two compartments, Direct Steam Floor Model Steamer, Model 24-CDP-10, single, large capacity Pressureless Convection Steamer. Choice of Compartment Controls, Manual By Pass Operation Mode, Compensating Thermostat, Exclusive Cold Water Condenser design, Type 430 Stainless Steel exterior and cooking compartments.

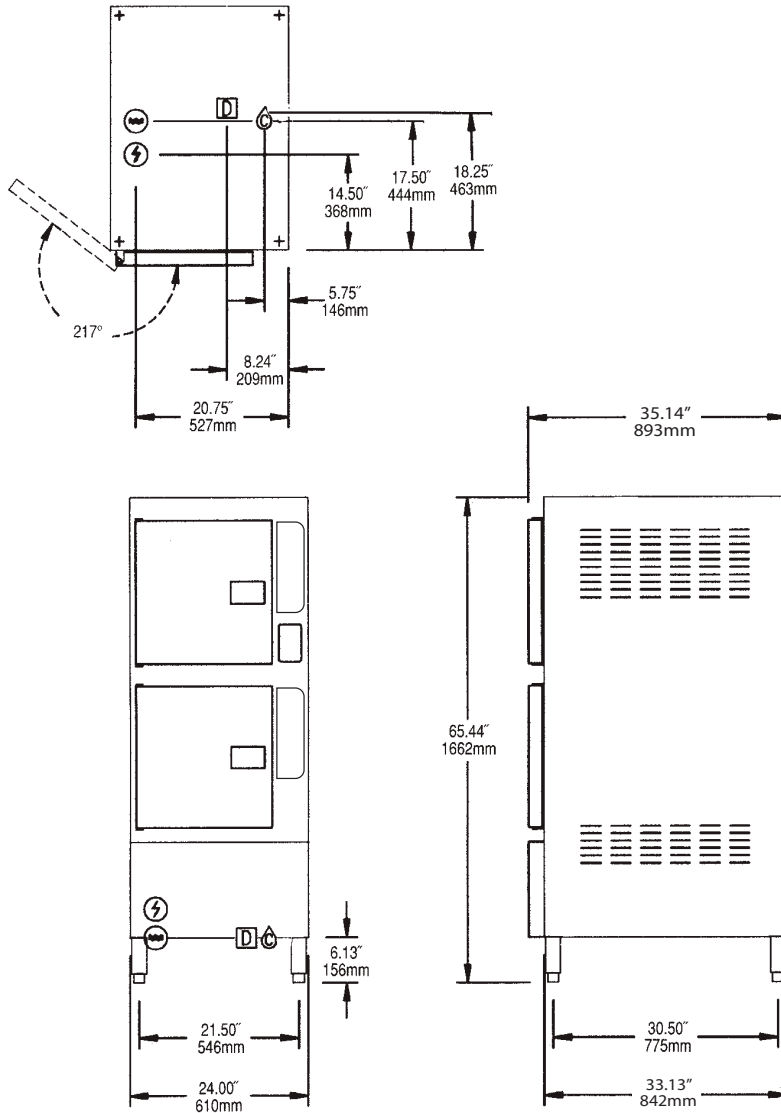
### Options & Accessories

- Second Pressure Reducing Valve for 50-120 psi steam pressure. (PRV)
- Cafeteria Pans in depths of 1", 2 1/2", 4" and 6"
- Correctional Packages

KE004046-18

# Cleveland

SteamCraft® Generator Style High Speed Convection Steamers



### COMPARTMENT HAS CAPACITY FOR:

- Five, 12" x 20" x 2 1/2" deep Cafeteria Pans

### WATER QUALITY REQUIREMENTS (Boilers, Generators)

TTDS:	50-250 ppm
Hardness:	50 - 200 mm (3 - 12 gpg)
pH value:	7.0 - 8.5
CL (Chloride):	max 50 ppm
Cl2 (free chlorine):	max 0.1 ppm
SiO2 (silica):	max 13 ppm
NH2Cl: (mono-chloramine)	max 0.1 ppm
Total Alkalinity:	50 - 100 ppm

TOTAL CAPACITY (2 Compartments)	UTILITY CONNECTIONS
10 — 12" x 20" x 2 1/2" Cafeteria Pans or 20 — 12" x 20" x 1" Cafeteria Pans or 6 — 12" x 20" x 4" Cafeteria Pans	(A) Electrical Supply (D) Drain: 1.50" Dia. (B) Water Supply for Condenser 1/2" Dia. NPT (C) Steam Supply: 0.75" Dia.

DIRECT STEAM ○	ELECTRIC ⚡	COLD WATER ⚡	DRAINAGE □
Steam supply: Furnish 1/2" IPS minimum line. 20 to 50 psi minimum required. For pressures between 50 to 120 psi, on additional Pressure Reducing Valve must be specified.	115V - 1 Phase Controls - 51 Watts	35 psi minimum 60 psi maximum 1/2" Dia. NPT for Condenser	1 1/2" Dia. Do not connect other units to this drain. Drain must not be located beneath the steamer itself. No PVC pipe for drain.

CLEARANCE
Right - 3", Left - 3", Rear - 3" (12" on control side if adjoining wall or equipment is over 30" high for service access) Contact factory for variances to clearances.

#### NOTES:

Cleveland Range reserves right of design improvement or modification, as warranted.  
 Many regional, state and local codes exist and it is the responsibility of the owner and installer to comply with the codes.  
 Cleveland Range equipment is built to comply with applicable standards for manufacturers. Included among those approval agencies are U.L./NSF#4 and CSA (AGA, CGA).

(NOT TO SCALE)

760 Beta Drive, Unit D  
 Mayfield Village, Ohio 44143

Tel 1.216.481.4900  
 Fax 1.216.481.3782  
 Email steam@clevelandrange.com

www.clevelandrange.com  
 Section 3, Page 22  
 11 / 23

Timeless Quality, Trusted For Life®