

## COMPRESSED AIR SYSTEMS & REFRIGERATED AIR DRYERS

Project \_\_\_\_\_  
 Item \_\_\_\_\_  
 Quantity \_\_\_\_\_  
 FCSI Section 11400 \_\_\_\_\_  
 Approved \_\_\_\_\_  
 Date \_\_\_\_\_

### Models

- CAS5 (VERTICAL)
- CAS7.5 (VERTICAL)
- CAS10 (HORIZONTAL)
- CAS15 (HORIZONTAL)
- CAS20 (HORIZONTAL)



CAS10



CAS7.5

### COMPRESSED AIR SYSTEMS

#### Standard Features

- Air Compressor mounted on A.S.M.E. rated Receiver Tank
- Baldor high efficiency Motor
- Magnetic Starter with Thermal Overloads, completely wired and mounted
- Balanced Pump, external and internal
- Cast Iron Cylinders
- Forged Crankshaft and Pistons
- High quality cast iron Piston Rings
- Cast aluminum Finned Inner Coolers
- Inner Cooler Safety Valve
- Manual Drain for Air Receiver Tank
- Automatic Start and Stop Control
- 14 gauge Belt Guard
- 1/2" Combination Filter/Pressure Regulator/Gauge
- 80 gallon Receiver Tank for CAS-5 & CAS-7.5
- 120 gallon Receiver Tank for CAS-10, CAS-15 & CAS-20
- Accepted for use in U.S.D.A. Inspected Facilities

### Short Form Specifications

Shall be CLEVELAND Model CAS \_\_\_\_\_,  
 COMPRESSED AIR SYSTEM, consisting of Air  
 Compressor & Receiver Tank, \_\_\_\_ H.P. (horse  
 power); High efficiency Baldor Motor with magnetic  
 Starter, Automatic Start and Stop Control; balanced  
 External and Internal Pump; 14 gauge Steel; Belt  
 Guard; 1/2" combination Filter / Pressure Regulator;  
 \_\_\_\_ gallon Receiver Tank.

### Options & Accessories

- Vibration Isolation Pads (set of four)
- 3/4" Diameter Stainless Steel Flex Hose
- Refrigerated Air Dryer with 37°F Dew Point
- Programmable, Automatic Drain Valve for Receiver Tank
- Larger models available on request

### Models

- CASAHT20  
(FOR CAS5)
- CASAHT25  
(FOR CAS7.5)
- CASAHT35  
(FOR CAS10)
- CASAHT50  
(FOR CAS15)
- CASAHT75  
(FOR CAS20)



### REFRIGERATED AIR DRYERS

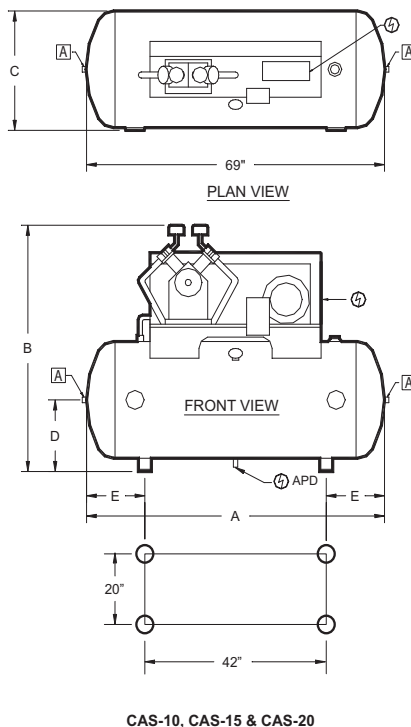
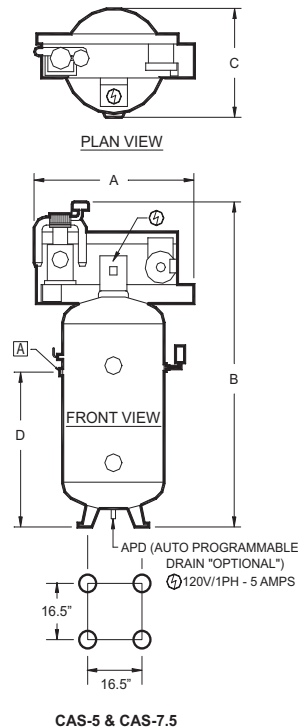
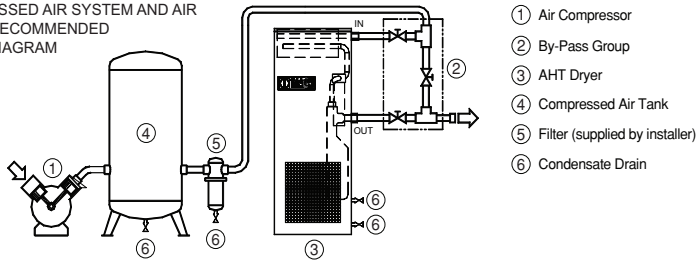
#### Standard Features

- Refrigerated air dryer for high inlet temperature
- Unique aluminum technology heat exchanger design
- Precise pressure dew point control over full operating range
- Solid State Controller
- Integrated after-cooler and 3-micron filter / separator
- Dual timed electronic drains with isolation valve and strainer
- Illuminated ON/OFF switch
- Drain set and push to test buttons
- Hot gas by-pass capillary tube controls
- R134A and R407C refrigerant for environmentally friendly applications

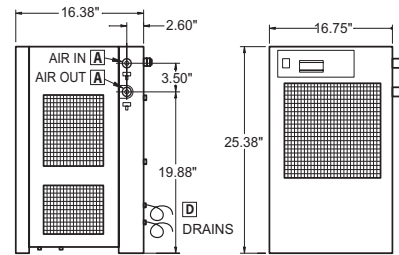
### Short Form Specifications

Shall be Cleveland Model CASAHT \_\_\_\_\_,  
 Refrigerated Air Dryer for Series "CAS" Compressed  
 Air Systems; precise pressure dew point control over  
 full operating range; dual, programmable electronic  
 timer drains; integrated after-cooler and 3-micron  
 filter / separator; "ACT" aluminum cooling  
 technology for efficient heat transfer, reduced  
 energy consumption and low pressure drop.

COMPRESSED AIR SYSTEM AND AIR DRYER RECOMMENDED PIPING DIAGRAM

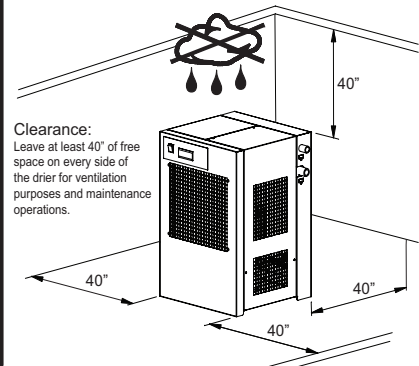
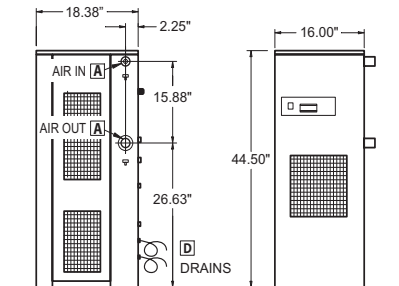


**CAS-AHT-20, 30, 40 & 50**



Drain: Each dryer comes fitted with flexible plastics tubing (1/4"dia. x 60"L).

**CAS-AHT-75**



AIR COMPRESSOR MODELS	A	B	C	D	E	CAPACITY AT 125 PSIG	AIR OUTLET	DRAIN	ELECTRICAL 208/3/60
							[A]	D	[⚡]
CAS5	37"	74"	26"	40 1/2"	-	18.0 CFM	1/2" NPT	1/4" NPT	17.5 AMPS
CAS7.5	37"	79"	26"	40 1/2"	-	23.5 CFM	3/4" NPT	1/4" NPT	25.3 AMPS
CAS10	69"	55"	30"	16"	13 1/2"	32.4 CFM	3/4" NPT	1/4" NPT	32.2 AMPS
CAS15	69"	55"	30"	16"	13 1/2"	46.2 CFM	1 1/4" NPT	1/4" NPT	48.6 AMPS
CAS20	69"	55"	30"	16"	13 1/2"	58.4 CFM	1 1/4" NPT	1/4" NPT	62.1 AMPS

REFRIGERATED AIR DRYER

MODELS	AIR	AIR FLOW	REPLACEMENT FILTER ELEMENT	REFRIGERANT	DRAIN FLEXIBLE TUBING	ELECTRICAL 115/1/60* AMPS	SHIPPING WEIGHT APPROXIMATE
	[A]				[D]	[⚡]	
CASAHT20 (for CAS5)	3/4"	20 SCFM	TP30	R-134A	1/4"	6.95	100 lbs
CASAHT25 (for CAS7.5)	3/4"	25 SCFM	TP30	R-134A	1/4"	6.95	100 lbs
CASAHT35 (for CAS10)	3/4"	35 SCFM	TP30	R-407C	1/4"	8.25	106 lbs
CASAHT50 (for CAS15)	1"	50 SCFM	TP45	R-407C	1/4"	8.6	125 lbs
CASAHT75 (for CAS20)	1"	75 SCFM	TP125	R-407C	1/4"	10.7	130 lbs

\*Comes standard with Cord & Plug

Cleveland Range reserves right of design improvement or modification, as warranted.

(NOT TO SCALE)