

ClevelandTM

2024 Key Cleveland Steam Products for K-12 Schools



**TIMELESS QUALITY,
TRUSTED FOR LIFE**



2024 NEW WARRANTY PROGRAM FOR K-12 SCHOOLS

STEAMCHEF BOILERLESS CONVECTION STEAMERS 10- PAN CONVECTION STEAMERS

3- Year Warranty Standard on all Steamers... **Plus**

- 5-Year Generator Warranty on 10-Pan Model Steamers
- **NEW for 2023** 3-Year Warranty on all SteamChef with Filter Purchase
- **NEW for 2023** 3-Year Warranty on 10-Pan Steamers with Filter Purchase
- 3-Year Warranty on All Steamer Doors, ALL Models!
- 1-Year Door Gasket Warranty on ALL Steamers!

STEAM JACKETED KETTLES

3- Year Warranty Standard on all Kettles... **Plus**

- **NEW for 2023** 3-Year Parts and Labor Warranty on Tabletop and Floor Mounted Kettles for K12 Schools
- **NEW for 2023** 10-Year Kettle Jacket Shell Warranty

TILT SKILLETS

3- Year Warranty Standard on all Tilt Skillets... **Plus**

- **NEW for 2023** 3-Year Parts and Labor Warranty on all Floor Mounted Tilt Skillets for 2021
- **NEW for 2023** 10-Year Skillet Pan Warranty



Model 22CCT6



Model 24CGA10.2



Model KET12T



Model KGL40



Model SGL40TR



Model SGL40T1



STEAMCHEF BOILERLESS STEAMERS EASY AS 3-2-1...

3-YEAR COMPARTMENT DOOR WARRANTY STANDARD

- Rugged 14-gauge stainless steel holds up to abuse.
- Heavy gauge door hinges, holds up to heavy abuse.

2-PIECE EXCLUSIVE COMPARTMENT DOOR DESIGN

- "Free Floating" inner door is self-adjustable.
- Maintains "Steam Tight" door seal.
- Removable for easy cleaning and sanitizing, "Cool to the Touch"

1-YEAR DOOR GASKET WARRANTY STANDARD

- Door gasket last "4-Times Longer" than competitive models

...Plus

PATENTED KLEANSHIELD COOKING COMPARTMENT DESIGN

- Provides "Clean Steam" - eliminates foaming and cross contamination
- Eliminates flavor transfer, easy to clean and sanitize.

EXCLUSIVE CONVECTION STYLE BAFFLE SYSTEM

- High velocity "Convection Steam" for even energy distribution
- Faster cooking and recovery times for superior performance

MEETS ENERGY STAR REQUIREMENTS

- Qualifies for Energy Rebates
- Meets LEED Green Energy Requirements

ELECTRIC MODELS NOW CERTIFIED VENTLESS



Steam generating water from SteamChef with KleanShield (left) and typical connectionless steam water (right) after 3 pans of potatoes.



Connectionless Model
22CCT6



Connected Electric Models
22CET3.1, 22CET6.1



Connected Gas Models
22CGT3.1, 22CGT6.1

GEMINI 10 CONVECTION STEAMERS EASY AS 3-2-1...

3-YEAR COMPARTMENT DOOR WARRANTY STANDARD

- Rugged 14-gauge stainless steel holds up to abuse.
- Heavy gauge door hinges, holds up to heavy abuse.

2-PIECE EXCLUSIVE COMPARTMENT DOOR DESIGN

- "Free Floating" inner door is self-adjustable.
- Maintains "Steam Tight" door seal.
- Removable for easy cleaning and sanitizing, "Cool to the Touch"

1-YEAR DOOR GASKET WARRANTY STANDARD

- Door gasket last "4-Times Longer" than competitive models

...Plus

TWIN INDEPENDENT COOKING COMPARTMENTS

- Separate steam generator, gas combustion system, water level control and cooking controls

HIGH EFFICIENCY "TURBO-CHARGED" GAS COMBUSTION SYSTEM

- For increased steam production, faster cooking speed and recovery
- Approved for use over combustible floors.

EXCLUSIVE "STEAM JET" STYLE CONVECTION SYSTEM

- High velocity "Steam Jets produces Convection Steam for even energy distribution – No fans needed.
- Faster cooking and recovery times for superior performance

SINGLE FRAME CONSTRUCTION

- Heavy Gauge stainless steel single frame construction allows for proper air flow, reduces time, holds up to abuse.



Models Available

24CGA10.2:	Gemini 10 (twin gas model)
24CGA10.2ES:	Gemini 10 (twin with Energy Star)
24CGA10	SteamCraft 10 (single gas model)
24CEA10:	Steamcraft 10 (Electric twin model)
24CGP10:	SteamCraft 10 (15 PSI gas boiler)
24CDP10:	SteamCraft 10 (Direct Steam)

The Cleveland Advantage



Model KET12T with easyDial and Temperature Probe

Models Available

KET-(3, 6, 12)-T (Electric models 3, 6, 12 gallons)
KGT-(6,12)-T (Gas models 6, 12, gallons)

New easyDial™ Control Option

- Digital time and temperature control and indicator
- Three cooking modes
Cook/Simmer, Cook/Off, Cook/Cook
- Meets IPX6 water rating protection guideline.
- Six built in diagnostic indicator readouts.
- Optional core temperature probe
- Available on KET, KGT Series countertop self-contained kettles.

KET SERIES COUNTERTOP STEAM JACKETED KETTLES

MEETS IPX6 WATER RATING PROTECTION GUIDELINES

- Meets IPX6 for both standard and easyDial controls models.
- Prevents downtime and expensive water related damages.

BUILT-IN SELF DIAGNOSTICS STANDARD

- 6 diagnostic error codes continuously monitor internal functions.
- Easy to service, promotes first time fix rates.

ENERGY EFFICIENT LOW WATT DENSITY HEATING ELEMENTS

- Low watt density element extends element life longer.
- 100% vacuum sealed, no gaskets required, leaks eliminated, no element failures.

COLOR CODED PRESSURE VACUUM GAUGE

- Green zone allows operators to easily identify kettle vacuum for optimum performance.
- Vent air zone easily identifies when vacuum is lost.

"MARINE STYLE" SAFETY LATCH STANDARD

- Built in safety latch prevents accidental spills.

SOLID STATE TEMPERATURE CONTROLS

- Less than 2°F (1°C) temperature variance for superior cooking control from simmering to rapid boil, no burning or scorching.





Model KGL40T (40 Gallon Tilt) shown.



Model KGL40SH (Short Series stationary)
Low 35" Rim Height

KGL SERIES GAS STEAM JACKETED KETTLES

MOST POWERFUL GAS KETTLE AVAILABLE

- 160,000 Btu's on 40-gallon models
- 190,000 Btu's on 60, 80, 100-gallon models
- 50 PSI steam jacket rating achieves elevated temperatures.

PATENTED "TURBO CHARGED" GAS HEATING DESIGN

- High efficiency patented forced air gas combustion system.
- Fastest in cooking speed and recovery
- Boils up to 40% faster than competitors.
- Certified for use over combustible floors.

BUILT-IN SELF DIAGNOSTICS STANDARD

- 6 diagnostic error codes continuously monitor internal functions.
- Easy to service, promotes first time fix rates.

COLOR CODED PRESSURE VACUUM GAUGE

- Green zone allows operators to easily identify kettle vacuum for optimum performance.
- Vent air zone easily identifies when vacuum is lost.

SOLID STATE TEMPERATURE CONTROLS

- Less than 2°F (1°C) temperature variance for superior cooking control from simmering to rapid boil, no burning or scorching.

New easyDial™ Control Option (Tilt -Model Only)

- Digital time and temperature control and indicator
- Three cooking modes
Cook/Simmer, Cook/Off, Cook/Cook
- Meets IPX6 water rating protection guideline.
- Six built in diagnostic indicator readouts.
- Optional core temperature probe
- Available on KEL, KGL Series countertop self-contained kettles.



the new “**MINI MVP**”

Most Versatile and Productive tilt skillet

...and NOW Small Batch Deep Frying

SUPERIOR COOKING RESULTS, ULTIMATE IN VERSATILITY

- 10-gallon (40 Liter) capacity electric tilt skillet
- Large 17" x 24" (43 x 61 cm) 408 sq. in. cooking surface
- Deep 7.25" (18 cm) pan sides.
- Beaded Blasted cooking surface prevents sticking.
- Solid State controls for accurate (+/- 5° F), even temperature-controlled cooking surface

NOW SMALL BATCH DEEP FRYING CAPABILITIES

- Oil Level Mark inside back of skillet
- Optional fry basket accessory with basket lift bracket
- Ideal for small batch deep frying

EASYDIAL CONTROLS STANDARD

- Accurate Solid State Temperature Control
0° – 425° F. (0° – 220° C) Temperature Setting
- Timer with Hours, Minute Settings.
- Loud Audible Buzzer at end of cooking cycle
- Optional Core Temperature Probe
- Three Cooking Modes
 - o Cook & HOLD (Simmer)
 - o Cook, Continuous COOK
 - o Cook, OFF
- Meets IPX6 Water Rating Requirements

SAFE, EASY MANUAL HAND TILT

- Marine Safety Latch standard prevents accidental spills.
- 10° Tilt Cooking Feature standard

SPRING ASSIST COVER STANDARD

- Vented Cover safely relieves steam and pressure buildup.



Mini MVP Tilt Skillet Model SET10
mounted on ST28 Stand

DURAPAN SERIES

SUPERIOR TEMPERATURE CONTROL

IMBEDDED TEMPERATURE SENSORS

- “Imbedded” temperature sensors drilled into pan bottom for precise even cooking (see comparison below).

MEETS IPX6 WATER RATING PROTECTION GUIDELINES

- Meets IPX6 for both standard and easyDial controls.
- Prevents downtime and expensive water related repairs.

MULTIPLE STAINLESS-STEEL BURNER DESIGN

- Large stainless-steel burners with “multiple rows of rosette’s
- Evenly spaced throughout the pan bottom for quick response and greater temperature control and even browning pattern

HYDRAULIC HAND TILT WITH QUICK LOWERING FEATURE

- Easy to turn hydraulic hand tilt requires fewer turn,
- Quick Lowering feature eliminates hand tilting down.

REINFORCED ROLLED RIM

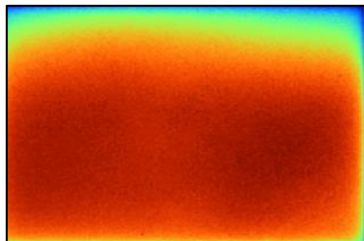
- Eliminates warping of skillet pan allowing skillet cover to close properly.



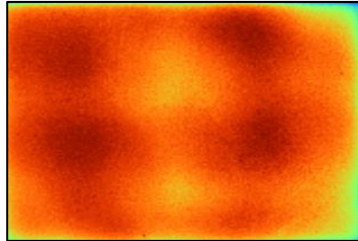
Shown with optional Sliding Drain Drawer
SEL30TR, SEL40TR: 30, 40-gallon electric
SGL30TR, SGL40TR: 30, 40-gallon gas

COMPARE THE DIFFERENCE

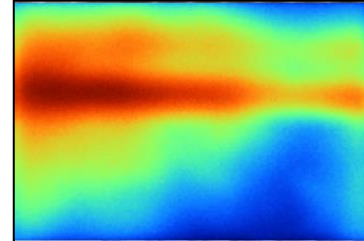
Cleveland solid state temperature control sensors are “drilled” into the skillet’s surface and provides an even temperature across entire pan surface, eliminating hot and cold spots for better browning pattern. Competitors clamped on version has a wider temperature variance which causes greater uneven temperatures across the pan surface.



Cleveland SGL40TR



Competitor A



Competitor B

Results of thermal imaging testing on three leading tilt skillets surfaces heated to 350°F.

POWERPAN SERIES

MORE POWER, SPEED AND RECOVERY

MOST POWERFUL TILT SKILLET AVAILABLE*

- Up to 60% more power on 30-gallon models
- Up to 100% more power on 40-gallon models

PATENTED "TURBO CHARGED" GAS HEATING DESIGN

- High efficiency forced air gas combustion system.
- Fastest in cooking speed and recovery

EXCLUSIVE "DUAL POWER" SETTINGS

- High/Low power setting for speed and energy savings
- 200,000/160,000 btu's for 40-gallon models
- 125,000/90,000 btu's for 30-gallon models

LOW 35" RIM HEIGHT

- Easier to safely handle food and cleaning process.

REINFORCED ROLLED RIM

- Eliminates warping of skillet pan allowing skillet cover to close properly.

SOLID STATE TEMPERATURE CONTROLS

- "Imbedded" temperature sensors for precise cooking.
- 10° Tilt Cooking Feature, heat stay on when pan is tilted.



*Cleveland gas models SGL30T1, SGL40T1
Based on competitors spec sheets

SEL30T1, SEL40T1 Electric models

New easyDial™ Control Option

- Digital time and temperature control and indicator
- Three cooking modes
Cook/Simmer, Cook/Off, Cook/Cook
- Meets IPX6 water rating protection guideline.
- Six built in diagnostic indicator readouts.
- Optional core temperature probe
- Available on SGL-T1, SEL-T1 Series countertop self-contained kettles.



STEAMER MAINTENANCE

STEAMCHEF BOILERLESS STEAMERS

BOILERLESS DESIGN – NO GENERATOR TO DESCALE

- Wipe out bottom of the compartment with vinegar and rinse to delime.
- Clean water level probes on right side of inside compartment
- Rotate inner door to extend gasket life.



STEAMCRAFT, GEMINI 10 STEAMERS

STAINLESS STEEL GENERATOR WITH EASY ACCESS DESCALING PORT

- East Access Descaling Port for simplified maintenance
- Water Level Probes outside generator, reducing scale built up.
- Firebar stainless steel elements expands and contracts, shedding off scale, increasing elements life and improved energy efficiency (electric models)

EASY TO USE DESCALING PUMP SYSTEM

- Descaling Pump System (Part no. 1071421) provides a fast, safe, and highly efficient to descale Cleveland stainless steel generators.
- Descaling Pump System contains:
 - 5-Gallon Container
 - Submersible Pump with Hose
 - 110-Volt Cord and Plug with ON/OFF Switch
 - Quick Disconnect for Descaling Port



“DISSOLVE” DESCALING SOLUTION

- An amazingly effective water based descaling solution for ridding generators of mineral build up.
 - Part Number 106174: six one-gallon containers
- Using DISSOLVE descaling solution on a regular basis will dramatically lower your maintenance cost and increase operating efficiency.



Model Number Reference Guide Popular K-12 School Cleveland Range Products

Product	Name	Model Number	Description
Steamers*	SteamChef	22CCT6	Boilerless Steamer, Electric, Connectionless, 6-Pans
	SteamChef	22CET3.1	Boilerless Steamer, Gas, Water, Drain Connection, 3-Pans
	SteamChef	22CET6.1	Boilerless Steamer, Gas, Water, Drain Connection, 6-Pans
	SteamChef	22CGT3.1	Boilerless Steamer, Gas, Water, Drain Connection, 3-Pans
	SteamChef	22CGT6.1	Boilerless Steamer, Gas, Water, Drain Connection, 6-Pans
	SteamCraft	21CET8	Generator Steamer, Electric, 3-Pans
	SteamCraft 3	21CET16	Generator Steamer, Electric, 5-Pans
	SteamCraft 5	21CGT5	Generator Steamer, Gas, 5-Pans
	SteamCraft 10	21CEA10	Generator Steamer, Electric, 10-Pans
	SteamCraft 10	21CGA10	Generator Steamer, Gas, 10-Pans
	Gemini 10	24CGA10.2	Twin Generator Steamer, Gas, 10-Pans
	Gemini 10	24CGA10.2ES	Twin Generator Steamer, Gas, 10-Pans, Energy Star
Kettles	KET Series	KET-(3, 6, 12)-T	Electric, Countertop, 3, 6, 12 gallons
	KGT Series	KGT-(6,12)-T	Gas, Countertop, 6, 12 Gallons
	KEL Series	KEL-25,40,60,80,100)-T	Electric Floor Model, 25,40,60,80,100 Gallons, Tilting
	KEL Series	KEL-25,40,60,80,100)	Electric Floor Model, 25,40,60,80,100 Gallons, Stationary
	KEL-SH Series	KEL-(40,60)-TSH	Short Series, Electric Floor Model, 60, 80 Gallons, Tilting
	KEL-SH Series	KEL-(40,60)-SH	Short Series, Electric Floor Model, 60, 80 Gallons, Stationary
	KGL Series	KGL-25,40,60,80)-T	Gas Floor Model, 25,40,60,80, Gallons, Tilting
	KGL Series	KGL-25,40,60,80,100)	Gas Floor Model, 25,40,60,80,100 Gallons, Stationary
	KGL-SH Series	KGL-(40,60)-TSH	Short Series, Gas Floor Model, 40, 60 Gallons, Tilting
	KGL-SH Series	KGL-(40,60)-SH	Short Series, Gas Floor Model, 40, 60 Gallons, Stationary
Tilt Skillets	Mini Tilt Skillet	SET10	Electric Tilting, 10 gallon working capacity.
	DuraPan Series	SEL-(30,40)-TR	Electric, Tilting, 30, 40 Gallons
	DuraPan Series	SGL-(30,40)-TR	Gas, Tilting, 30, 40 Gallons
	PowerPan Series	SEL-(30,40)-T1	Electric, Tilting, 30, 40 Gallons
	PowerPan Series	SGL-(30,40)-T1	Gas, Tilting, 30, 40 Gallons

* Note: All SteamChef models meet Energy Star requirements and qualifies for utility rebate programs.