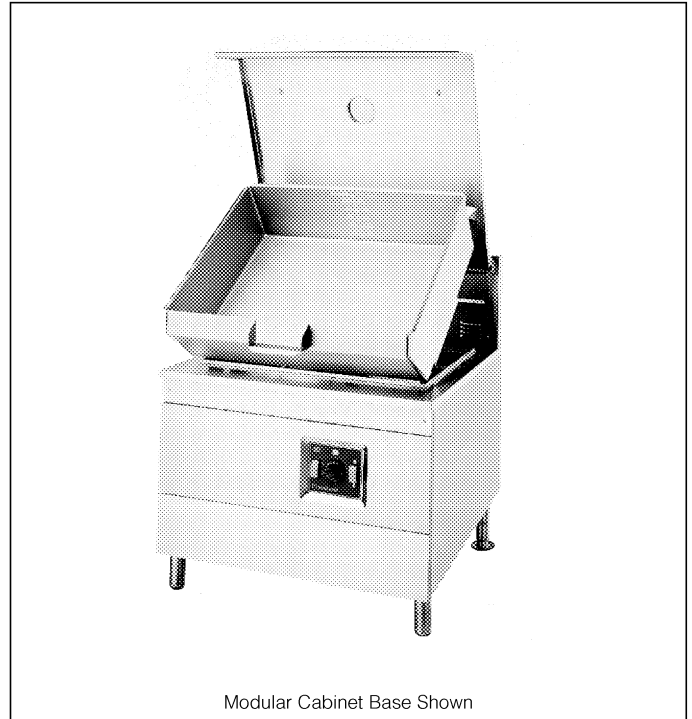
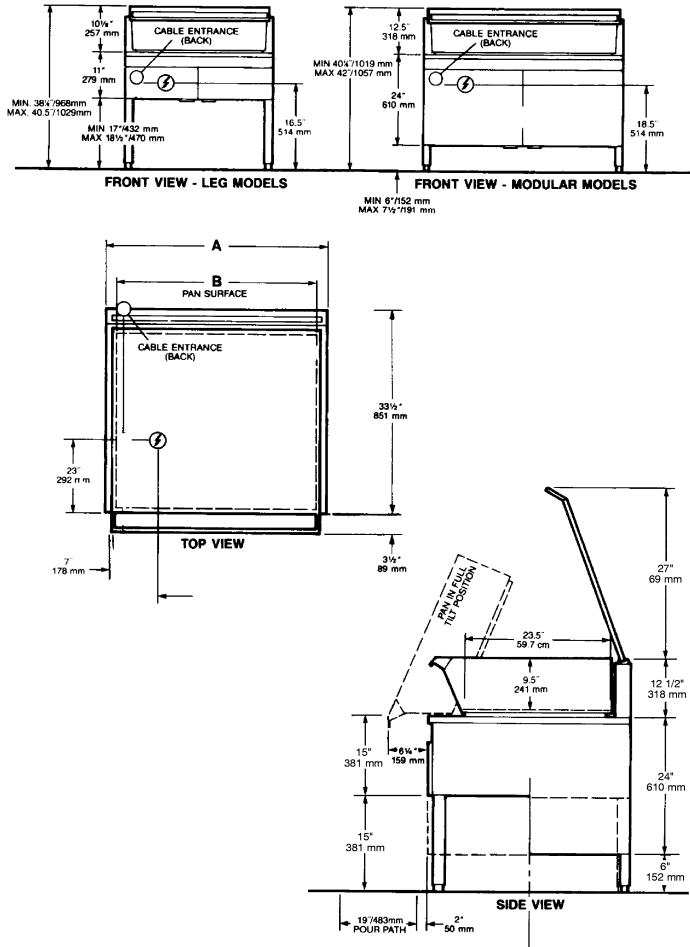


ELECTRIC TILTING OPEN BASE AND MODULAR SKILLETS

MODELS: SEL-30-TR SEM-30-TR
 SEL-40-TR SEM-40-TR

ITEM NUMBER _____

JOB NAME / NUMBER _____

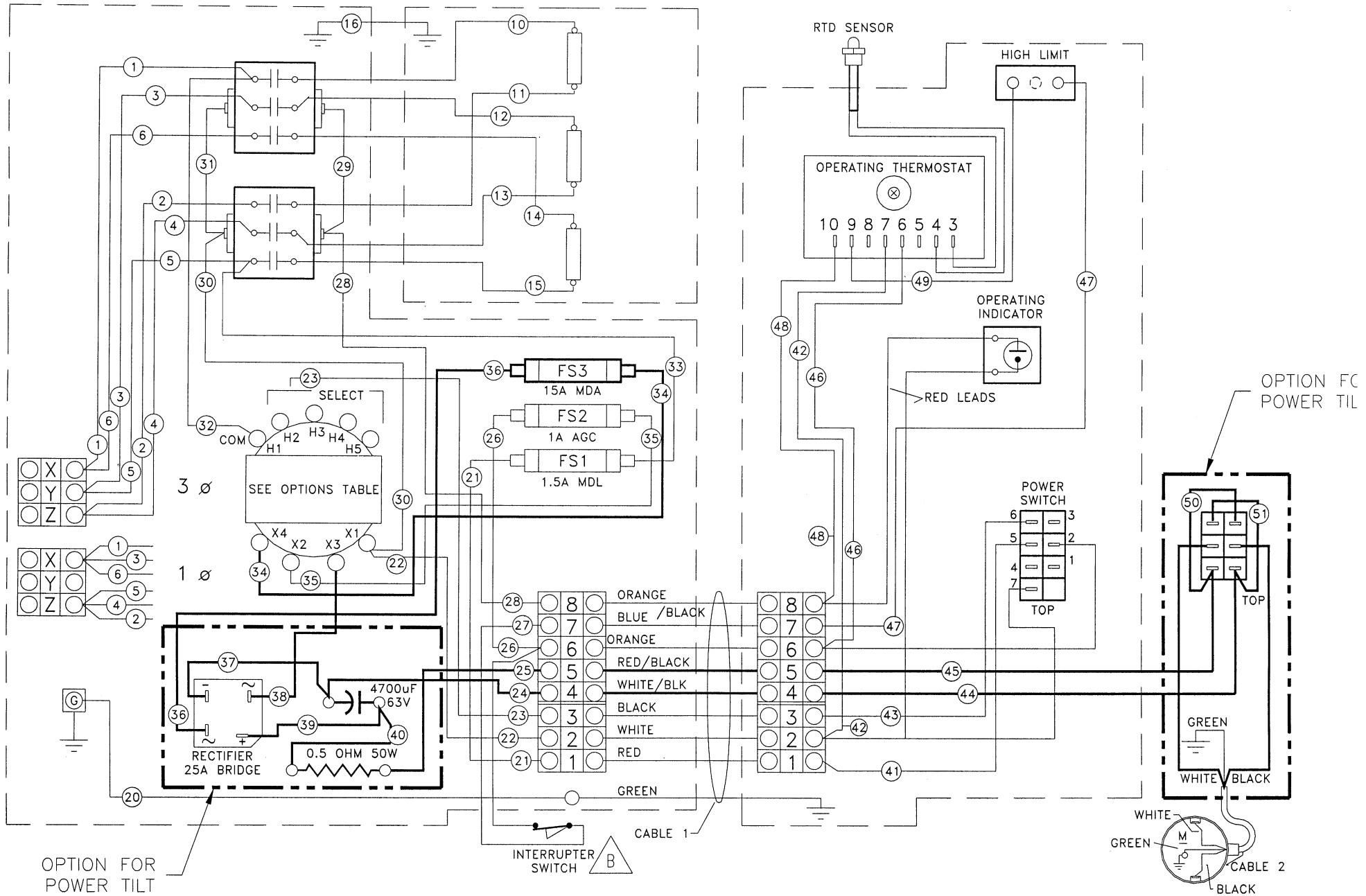


SHORT FORM SPECIFICATION

Shall be CLEVELAND, Tilting Skillet; Model SE - ____ - TR ____ KW, ____ Volts holding no less than ____ Gallons; Complete with thermostatic and Safety Controls; Gallon Markings; Stainless Steel Clad; 5/8" Cooking Surface; Power Tilt; Spring Assist Cover with adjustable Vent. All Stainless Steel Construction. No Clearances Required.

MODEL	CAPACITY		DIMENSIONS				LOADING CHART								SERVICE CONNECTION				
			A		B		Total kw. Load	3-Phase - 240V			3 Phase - 208V			Single Phase		⚡	Electric direct connection 3 wire nominal line		
			in.	mm	in.	mm		X	Y	Z	X	Y	Z	240V	208V				
SEL-30-TR SEM-30-TR	30	115	36	914	32	813	14.4	35	35	35	40	40	40	60	70	INSTALLATION NOTES			
SEL-40-TR SEM-40-TR	40	150	48	1219	44	1118	18.0	43.5	43.5	43.5	50.00	50.0	50.0	75.0	87.0			COMBUSTIBLE WALL CLEARANCES	ALL SIDES
																	in.		mm
																		1	25

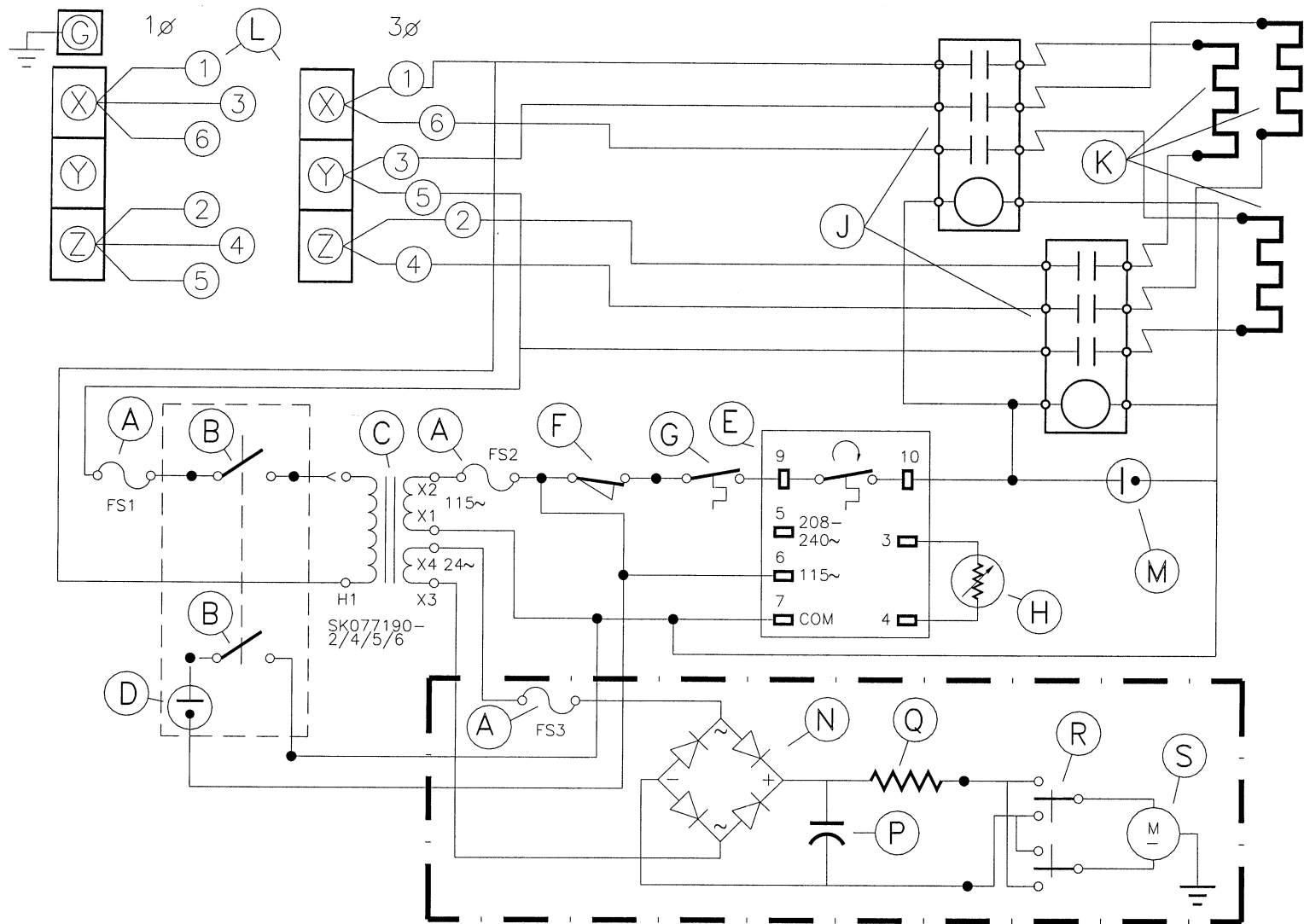
Cleveland Range reserves right of design improvement or modification, as warranted.



MODEL F30,40E-L,MR, SEL30,40TR 208/240/380/415/480V DELTA

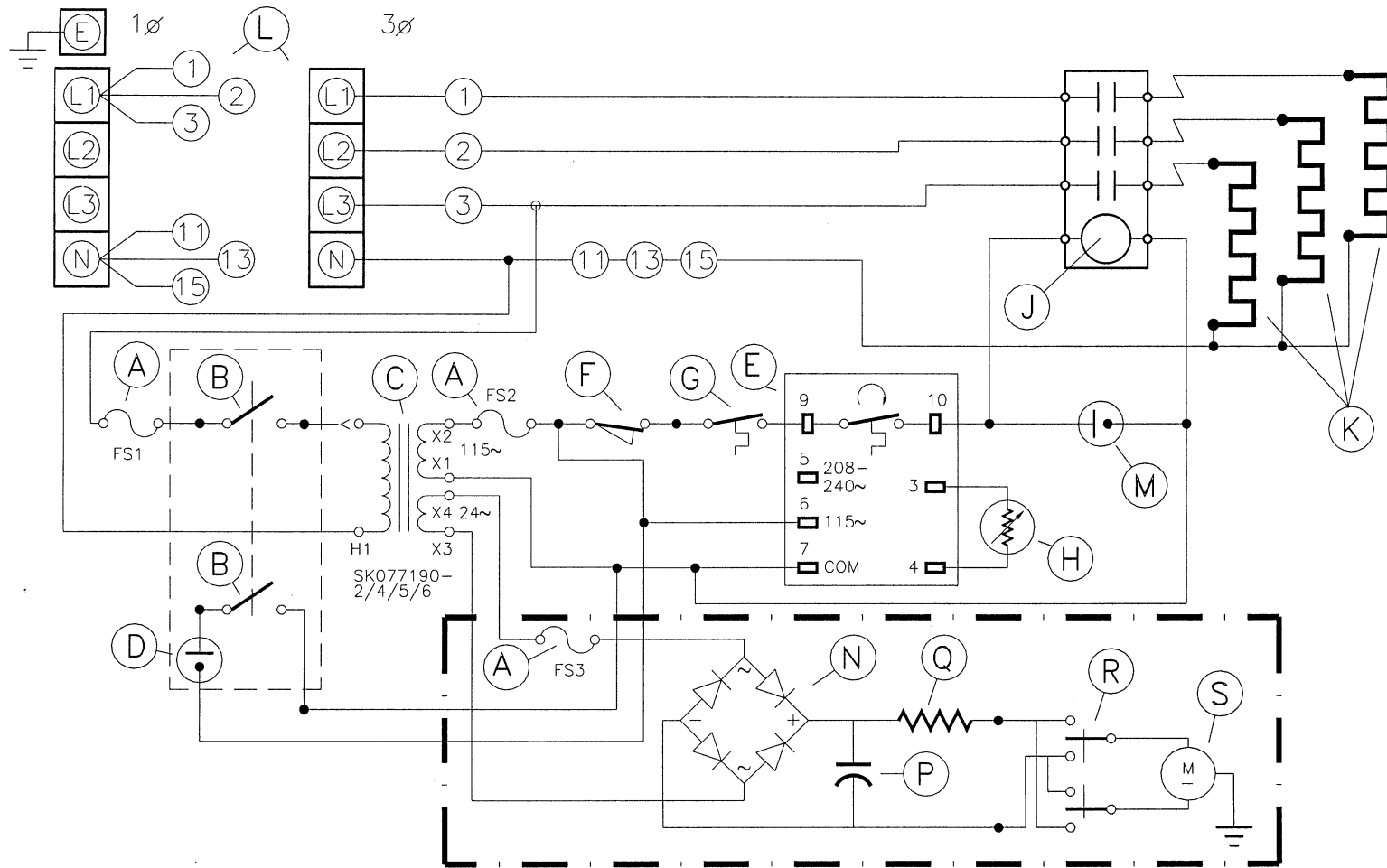
SK90123-4

(208/240/380/415/480V 1Ø/3Ø)



- A - FUSE
- B - POWER SWITCH
- C - TRANSFORMER
- D - PILOT - RED
- E - ELECTRONIC THERMOSTAT
- F - INTERRUPTER SWITCH
- G - HIGH LIMIT SWITCH
- H - RTD SENSOR
- J - CONTACTOR

- K - ELEMENT
- L - TERMINAL BLOCK
- M - PILOT - YELLOW
- N - RECTIFIER
- P - CAPACITOR
- Q - RESISTOR
- R - TILT CONTROL
- S - ACTUATOR
- POWER TILT ONLY



- A - FUSE
- B - POWER SWITCH
- C - TRANSFORMER
- D - PILOT-RED
- E - ELECTRONIC THERMOSTAT
- F - INTERRUPTER SWITCH
- G - HIGH LIMIT SWITCH
- H - RTD SENSOR
- J - CONTACTOR

- K - ELEMENT
- L - TERMINAL BLOCK
- M - PILOT-YELLOW
- N - RECTIFIER
- P - CAPACITOR
- Q - RESISTOR
- R - TILT CONTROL
- S - ACTUATOR
- - - POWER TILT ONLY

**PROBLEM:
SEL-R
Skillet won't
Heat**

